



PARR Dashboards – COMPLETE SET

9 October 2018

PAFA



Gemserv

2A.1 Estimated & Check Reads - Product Classes 1 & 2



Report measures the percentage of each shippers portfolio where estimated reads were provided. Count of each shippers portfolio where check reads were provided.

PC1

- ↓ 11.09% Ramsey
- ↓ 5.50% Colwyn Bay
- ↓ 3.55% Hastings

- ↑ 1.80% Folkestone
- ↑ 1.37% Southsea Clarence

- ↓ 1.17% - Monthly change
- ↓ 17.00% - Annual change

Harwich **17.84%**, Weymouth **16.13%**,
Southsea Clarence **11.85%**.

PC2

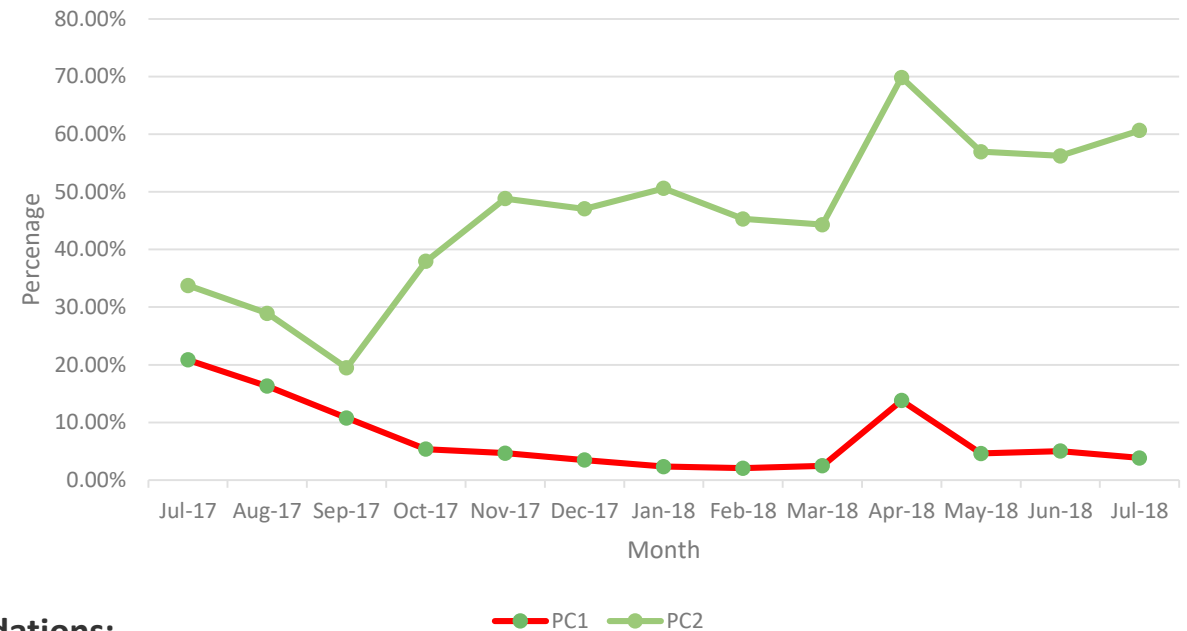
- ↓ 14.82% Gravesend
- ↓ 9.65% Eastbourne
- ↓ 9.15% Mumbles

- ↑ 95.65% Ramsey
- ↑ 19.14% Hastings
- ↑ 16.42% Southsea Clarence

- ↑ 5.56% Monthly change
- ↑ 98.31% Annual change

Walton-on-Naze **100%**, Clacton
98.39%, Harwich **95.30%**

2A.1 Percentage of Estimated Reads for PC1 & PC2



Areas to focus:

- April 2018 for PC1 and PC2 is outlier.
- Period between August 2017 and November 2017 because of the increase in estimated reads submitted.

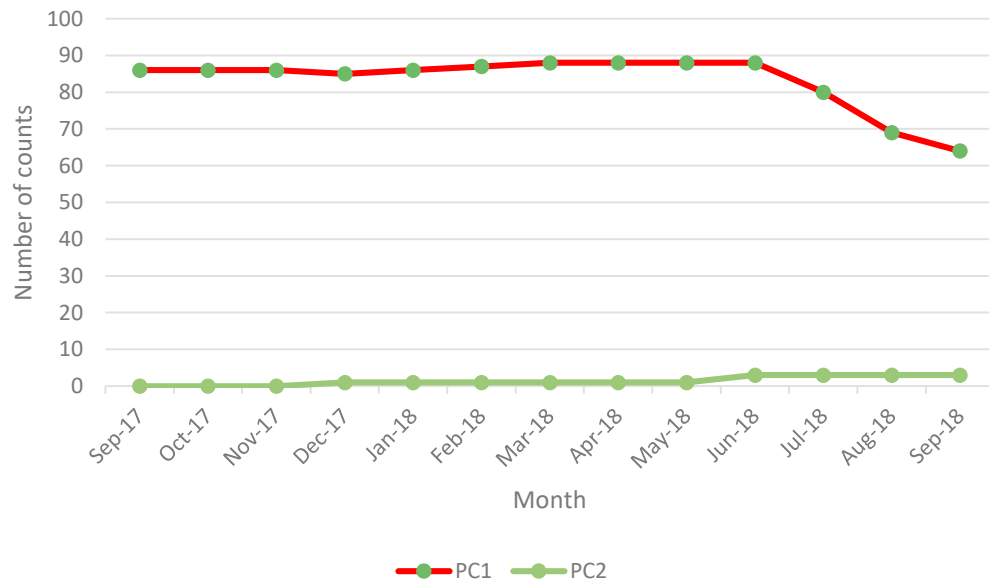
Recommendations:

- Engagement with Harwich, Weymouth and Southsea Clarence in PC1 to understand their processes.
- Engagement with Walton-on-Naze, Clacton and Harwich in PC2 to understand their processes.

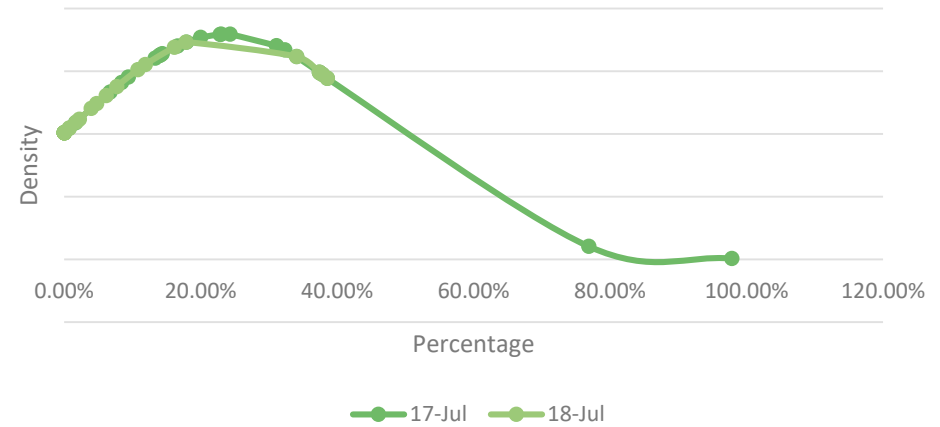
2A.1 Estimated & Check Reads - Product Classes 1 & 2



2A.1 Count of Check Reads completed for PC1 and PC2



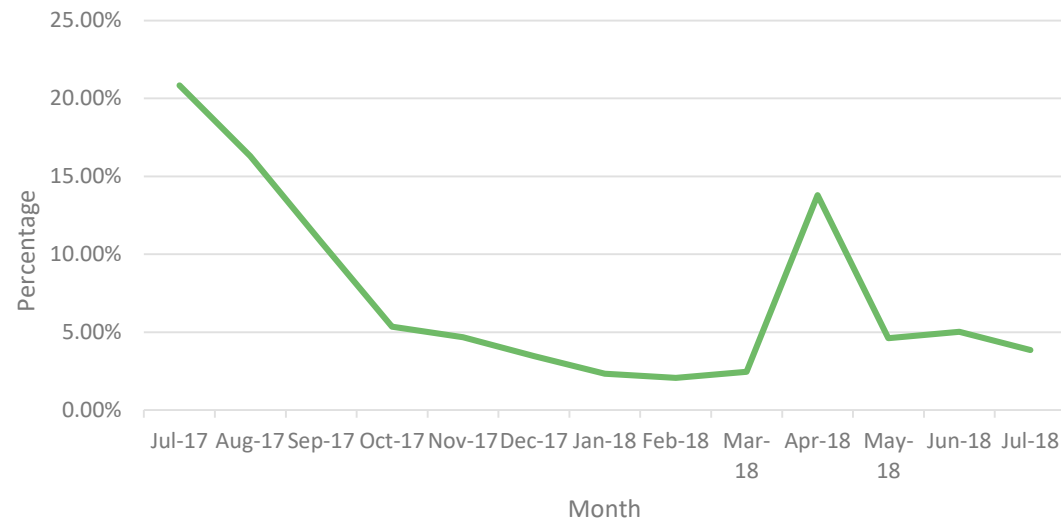
2A.1- 12 month comparison (Average of PC1 Estimated Reads)



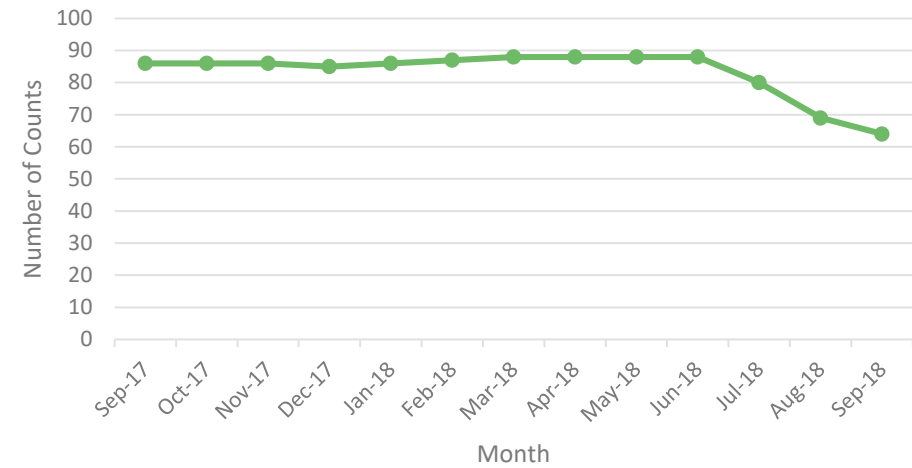
2A.1 Estimated & Check Reads - Product Classes 1 & 2



2A.1 PC1 Estimated Read Totals



2A.1 PC1 Total Check reads



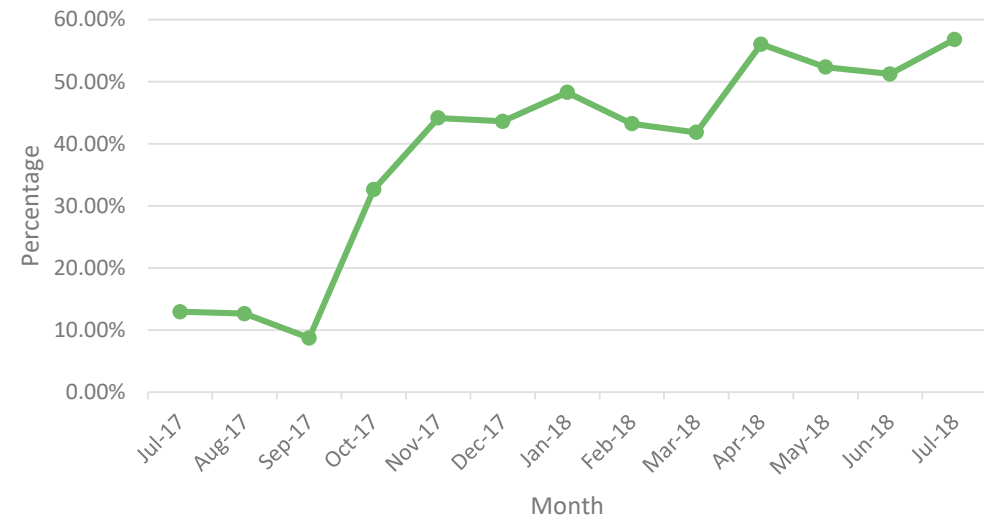
2A.1 Estimated & Check Reads - Product Classes 1 & 2



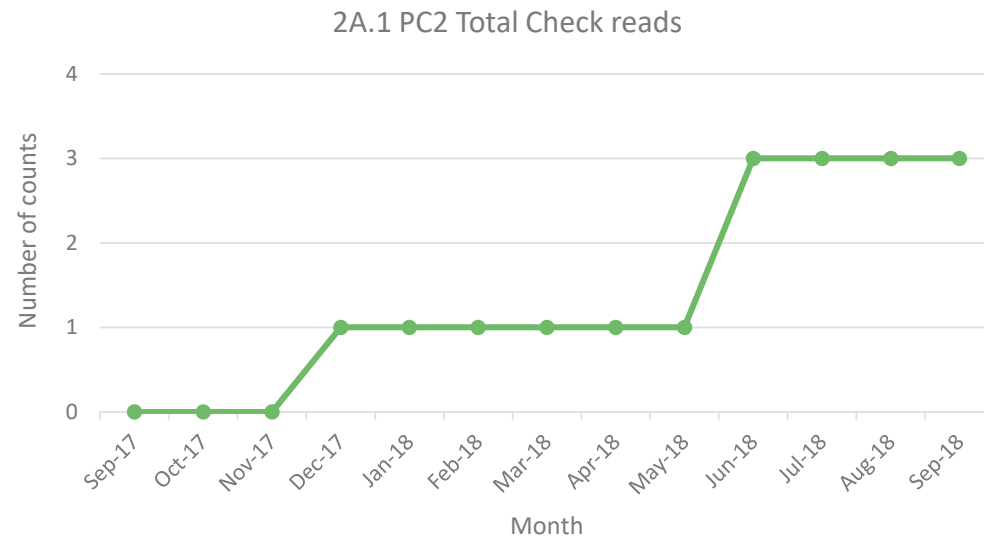
2A.1- 12 month comparison (Average of PC2 Estimated Reads)



2A.1 PC2 Estimated Read Totals



2A.1 Estimated & Check Reads - Product Classes 1 & 2



2A.2 – No Meter Recorded

Report measures the count of each shippers portfolio where no meter recorded in the supply point register.

PC3

- ↓ 0.013% Falmouth
- ↓ 0.008% Southsea Clarence
- ↓ 0.001% Clevedon
- ↑ 11.11% Weymouth Bandstand

↓ 0.004% Monthly Change
 ↑ 0.005 % Annual Change

Weymouth Bandstand **11.11%**, Hastings **0.015%**,
 Southsea Clarence **0.008%**

PC4

- ↓ 0.055% Paignton
- ↓ 0.040% Lytham
- ↓ 0.026% Hastings

- ↑ 0.117% Eastbourne
- ↑ 0.065% Gravesend
- ↑ 0.061% Birnbeck

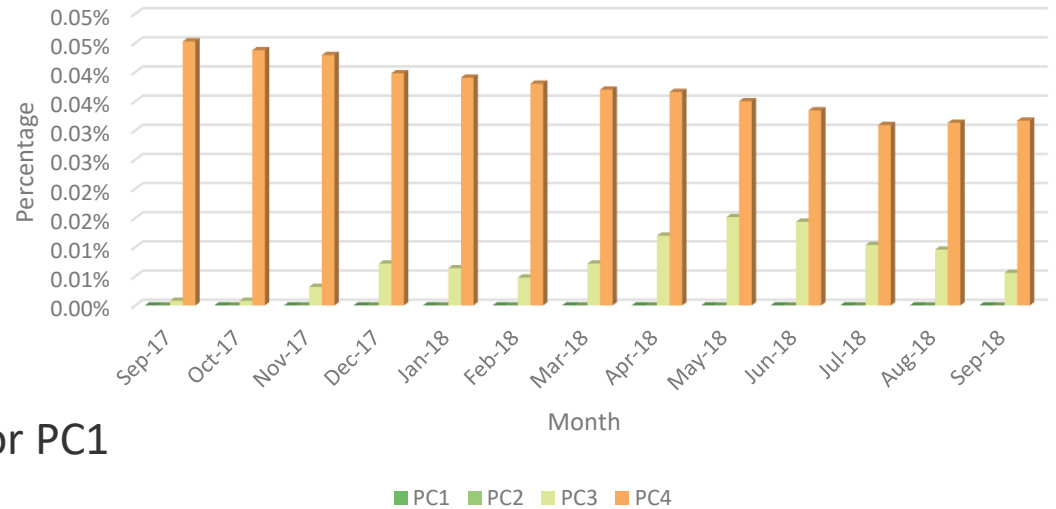
↑ **0.001%** monthly change
 ↓ 0.014% Annual Change

Eastbourne **0.769%**, Lytham
0.538%, Mumbles **0.346%**.

Areas to focus:

- Increase in no meter recorded for PC3 in the past twelve months.
- Increase in no meter recorded for months April, May and June 2018 for PC3.

2A.2 Percentage of no meter recorded by Product Class



0.00% for PC1 and PC2

Recommendations:

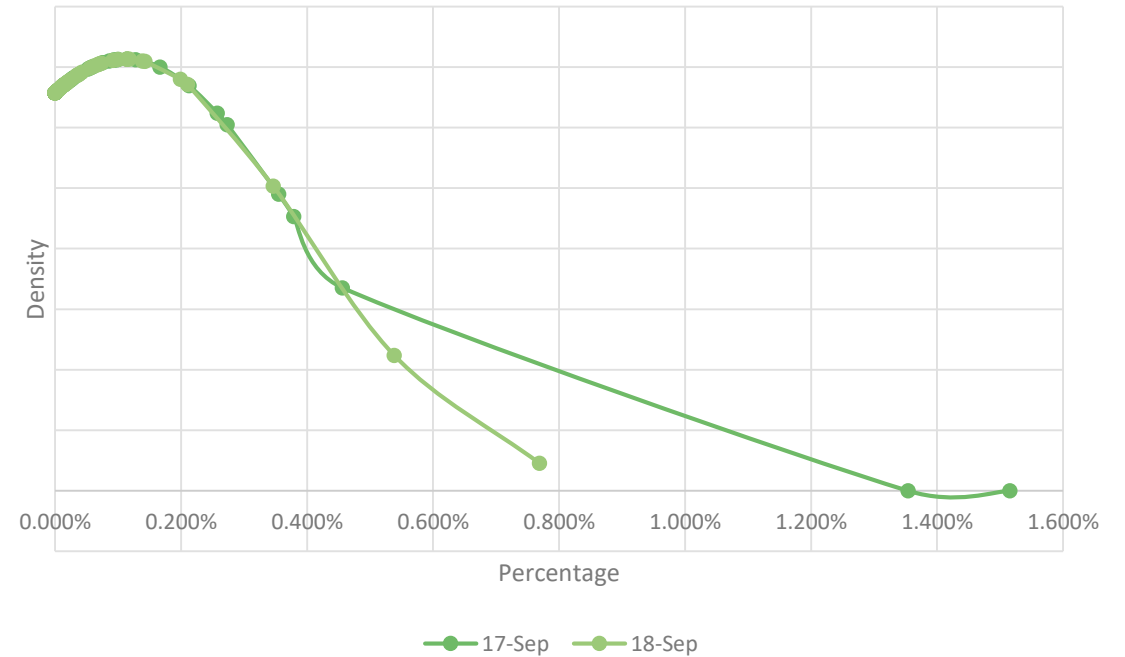
- Engagement with Falmouth, Southsea Clarence, Clevedon, Hastings and Weymouth Bandstand to understand their processes in PC3.
- Engagement with Eastbourne, Lytham and Mumbles to understand their processes in PC4.

2A.2 – No Meter Recorded



Zeros for PC1 and PC2. Data cannot be normalised for PC3.

2A.2 - 12 month comparison (no meter recorded) PC4



2A.3 No Meter Recorded and data flows received



Report measures the count of each shippers portfolio where no meter recorded in the supply point register and data flows received

PC3

- ↓ 1 Falmouth
- ↓ 1 Clevedon
- ↑ 1 Hastings

- ↓ 5 Monthly Change
- ↑ 5 Annual Change

Clevedon 3, Falmouth 1,
Hastings 1, Southsea
Clarence 1.

PC4

- ↓ 14 Deal
- ↓ 10 Saltburn
- ↓ 7 Lytham

- ↑ 82 Colwyn Bay
- ↑ 18 Folkestone
- ↑ 9 Herne Bay

- ↑ 79 Monthly Change
- ↓ 1674 Annual Change

Colwyn Bay 787, Deal 290 Claremont 114.

0.00% for PC1
and PC2

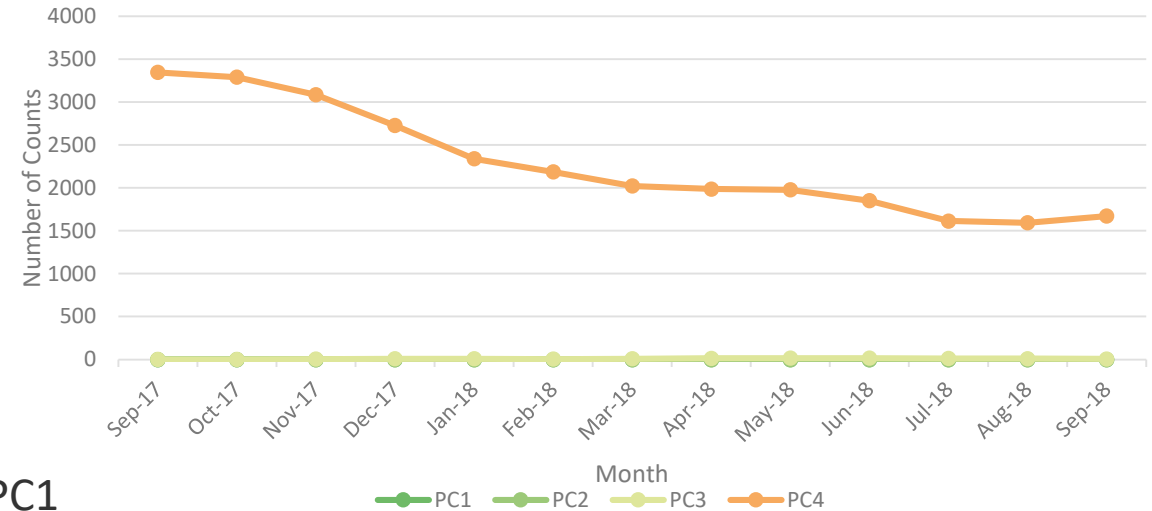
Areas to focus:

- The industry processes used to manage no meter recorded.

Recommendations:

- Industry engagement with Clevedon, Falmouth, Hastings and Southsea Clarence for PC3.
- Industry engagement with Claremont, Colwyn Bay and Deal for PC4.

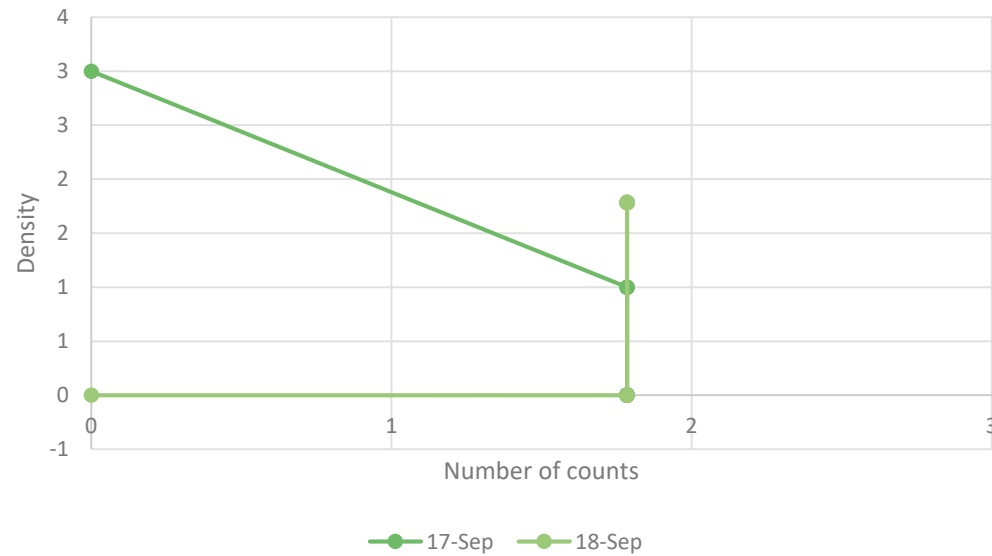
2A.3 No meter recorded by Product Class and data flows received



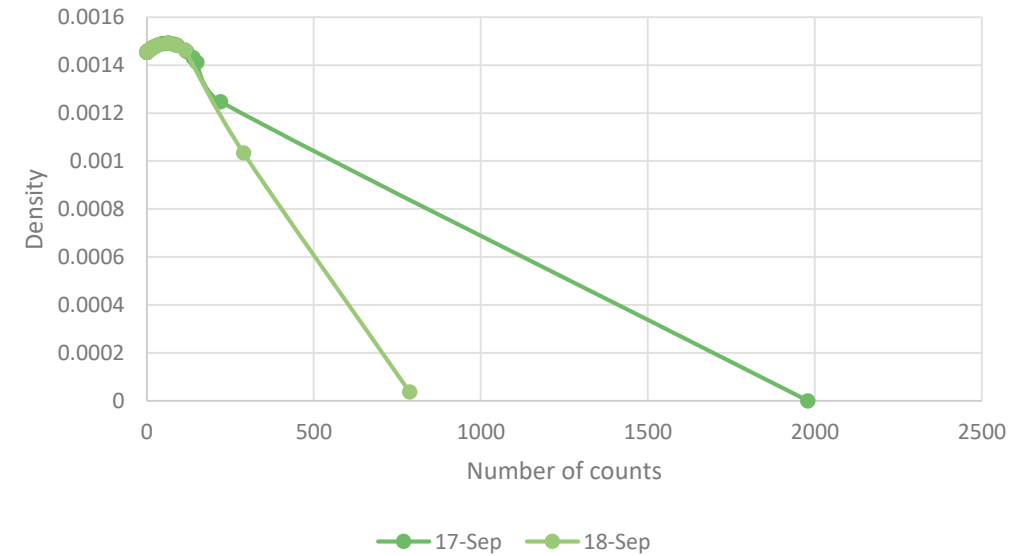
2A.3 No Meter Recorded and data flows received



2A.3- 12 month comparison PC3



2A.3- 12 month comparison PC4



2A.4- Shipper Transfer Read Performance



Report measures the percentage of Shipper portfolio of opening meters reads provided following confirmation.

- ↑ 30.10% Birnbeck
- ↑ 18.11% Torquay
- ↑ 15.55% Blackpool South
- ↓ 26.39% Colwyn Bay
- ↓ 22.62% Worthing
- ↓ 17.28% Herne Bay

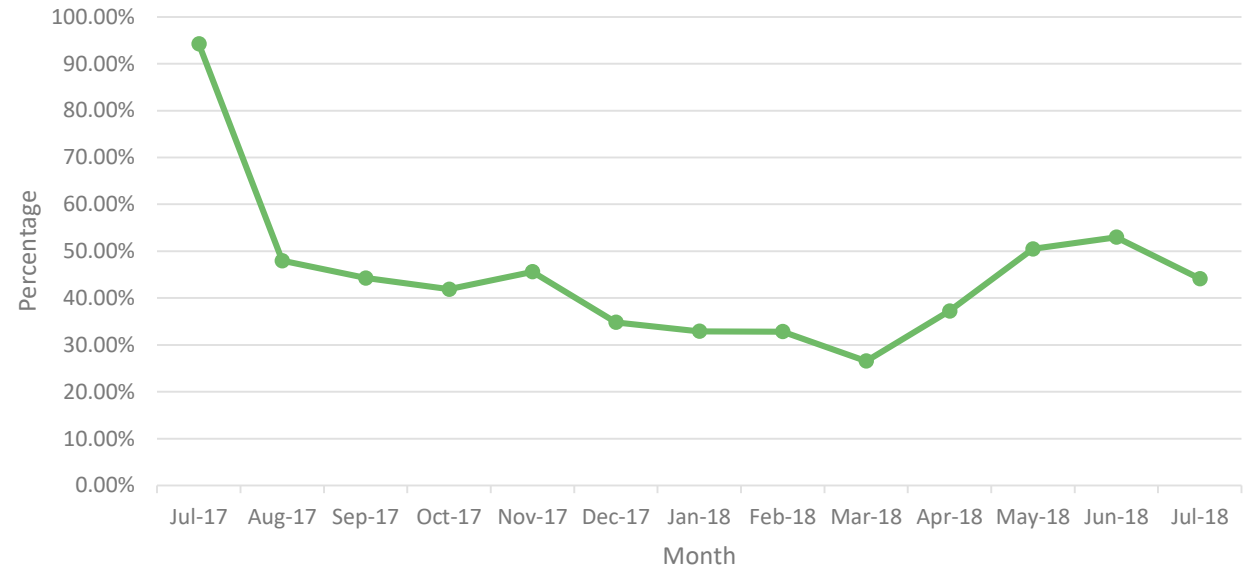
Areas to Focus:

- July 2017 (94.25%) data point is an outlier.

Recommendations:

- Further analysis of months leading up to March 2018.
- Industry education on obligation to provide opening meter readings following confirmation.
- Industry engagement on the difficulties providing opening meter reading following confirmation.
- Industry engagement with Claremont, Colwyn Bay, Deal, Herne Bay and Saltburn and Weymouth.

2A.4 Percentage of total industry of opening meter reads provided.



↓ 8.38% - Monthly change

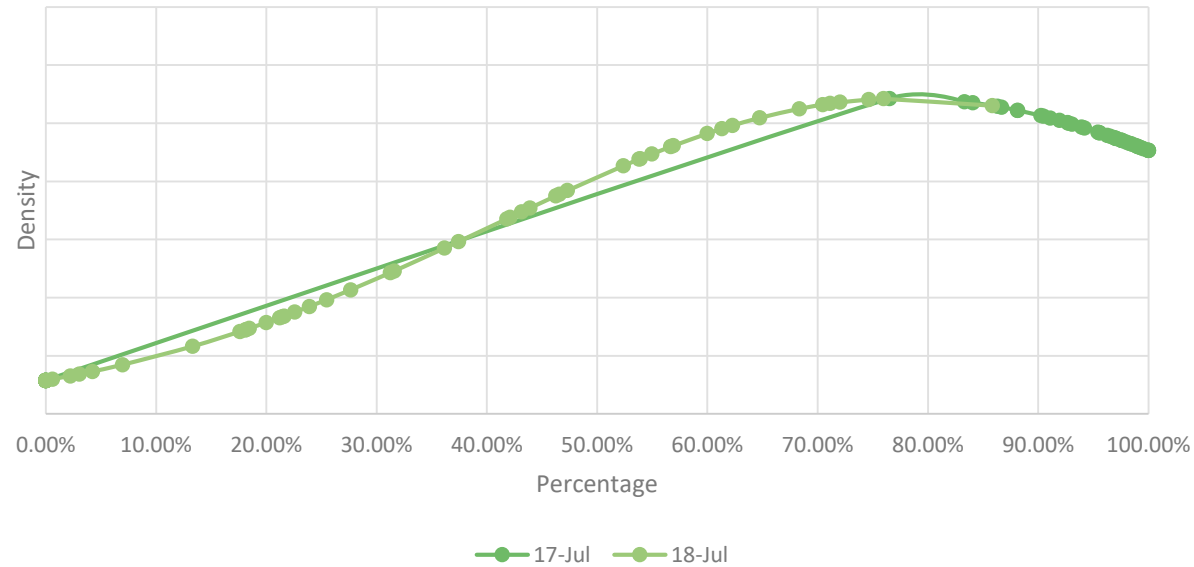
↓ 50.10% - Annual change

0.00% - Greenland, Ramsey, Southport and Walton on Naze

2A.4- Shipper Transfer Read Performance



2A.4 – 12 month comparison of Shipper Transfer Read Performance.

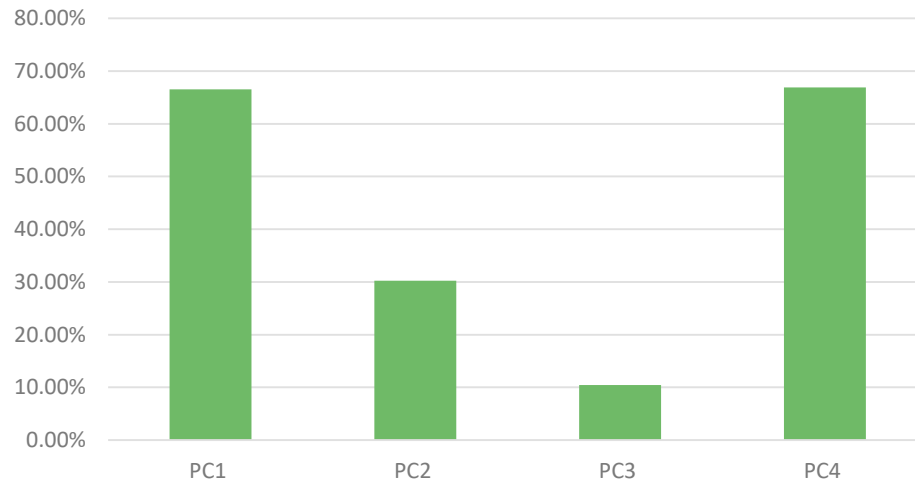


2A.5- Read Performance



Report measures the percentage of Shipper portfolio submitting reads.

2A.5 Percentage of Shipper portfolio submitting reads



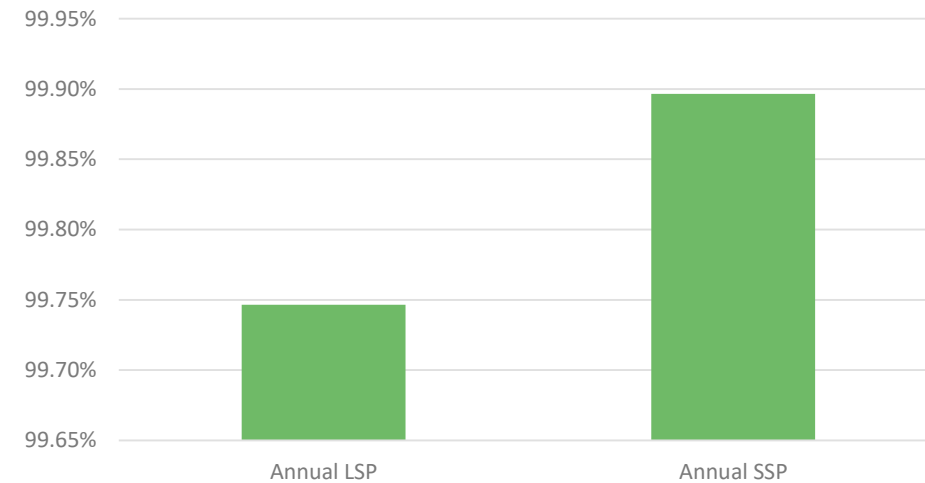
PC1
 100% Canary Wharf
 100% Ramsey
 90% Gravesend

PC2
 86.23% Falmouth
 83.33% Colwyn Bay
 48.75% Morecambe Central

PC3
 83.33% Colwyn Bay
 33.33% Cromer
 32.12% Falmouth

PC4
 93.79% Gravesend
 87.04% Morecambe Central
 85.71% Ryhl

2A.5 Percentage of Shipper portfolio submitting reads



Areas to focus:

- The industry processes used to manage the submitting of reads for each Product Class. With specific reference to PC1 to begin with.

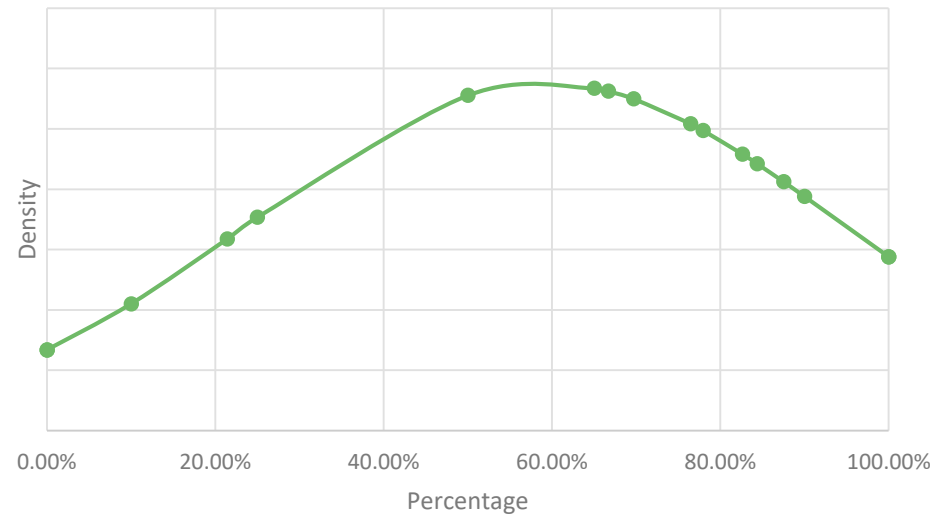
Recommendations:

- Investigate the current industry standard for the last twelve months.
- Engage with industry in understanding any obstacles they might be having in relation to submitting reads specifically PC1

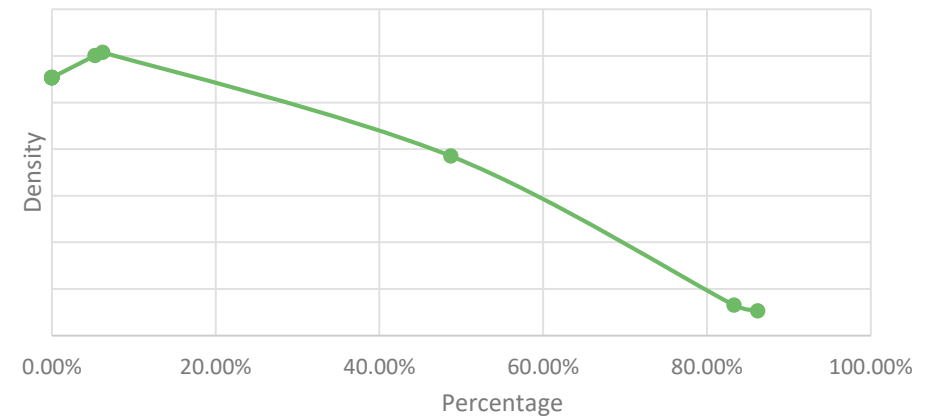
2A.5- Read Performance



2A.5 Distribution of percentage of PC1 sites providing meter reads



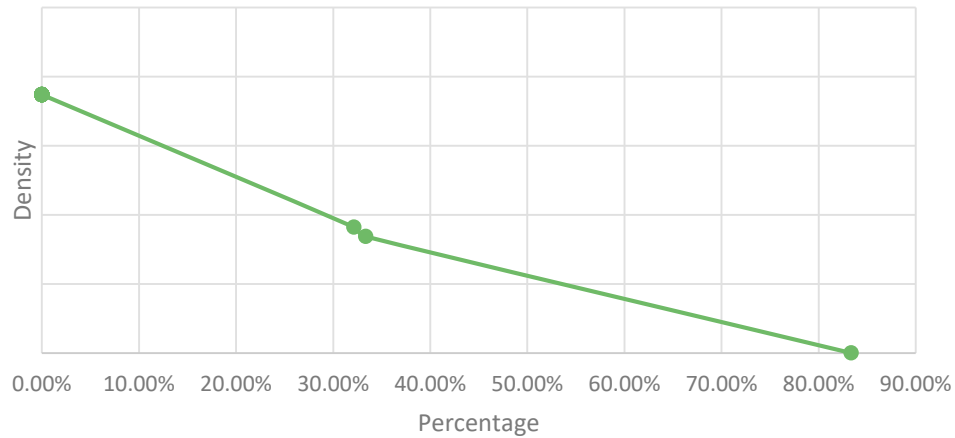
2A.5 Distribution of percentage of PC2 sites providing meter reads



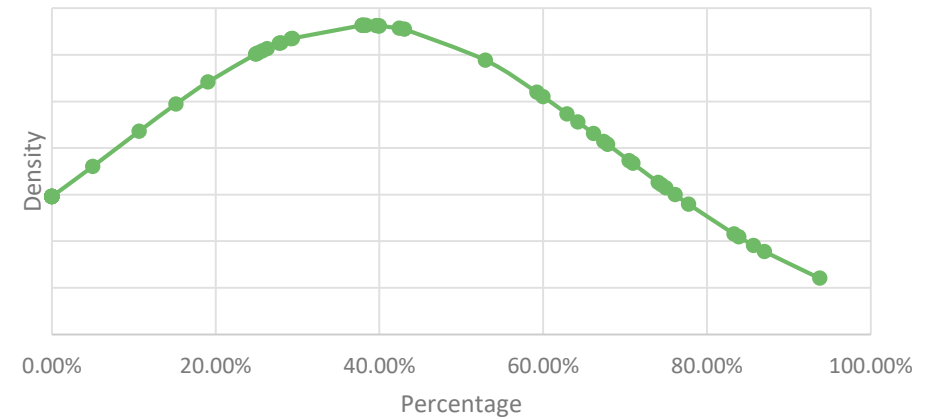
2A.5- Read Performance



2A.5 Distribution of percentage of PC3 sites providing meter reads



2A.5 Distribution of percentage of PC4 sites providing meter reads

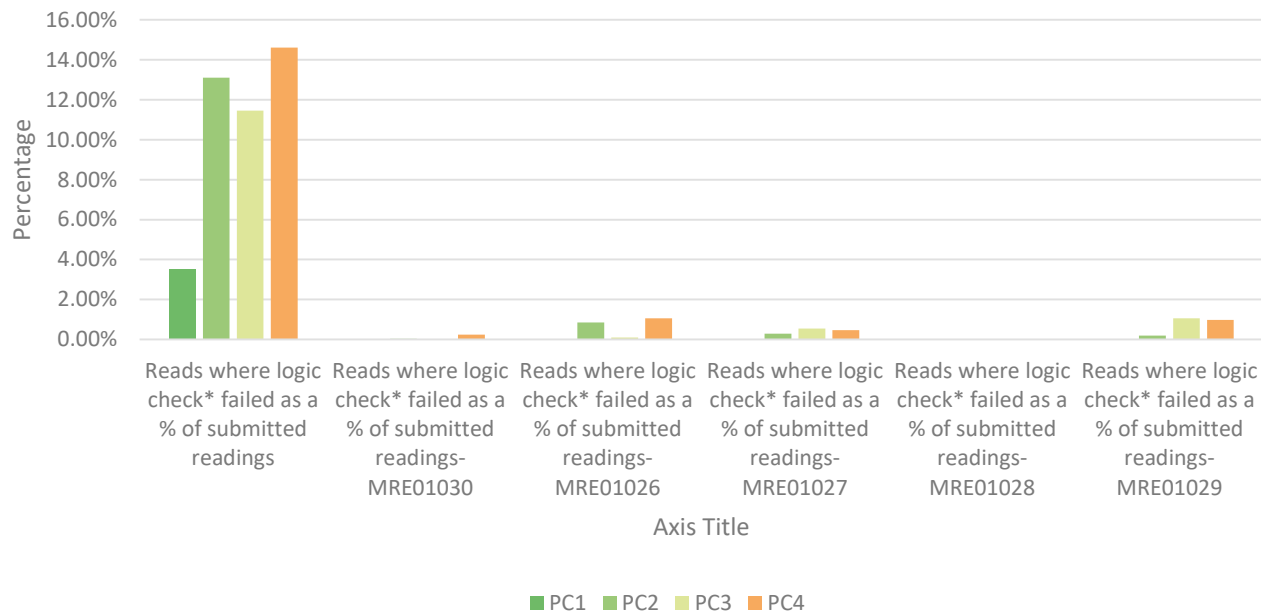


2A.6 Meter Read Validity Monitoring



Report measures the percentage of Shipper portfolio where reads submitted failed validation.

2A.6 Percentage of meter read validity by Product Class



Product Class	% of submitted reads	MRE01030	MRE01026	MRE01027	MRE01028	MRE01029
1	100% Paignton					
2	70.10% Hastings	3.44% Folkestone	4.95% Gravesend	2.44% Gravesend		0.74% Eastbourne
3	72.99% Burnham-on-Sea	0.69% Weymouth Bandstand	6.90% Colwyn Bay	21.89% Herne Bay		4.98% Mumbles
4	100% Culver	25.00% Totland Bay	6.54% Kilcreggan	10.22% Cromer		25.00% Totland Bay

2A.8 AQ Correction by Reason Code

Report measures the count of Shipper Portfolio of MPRNs where AQ Correction process Used

Reason Code 01- Confirmed Theft

- 1 Beaumaris
- 1 Blackpool North
- 1 Eastbourne
- 1 Gravesend

Reason Code 03- Commencement of New Business

- 2319 Herne Bay
- 316 Southend
- 3 Eastbourne

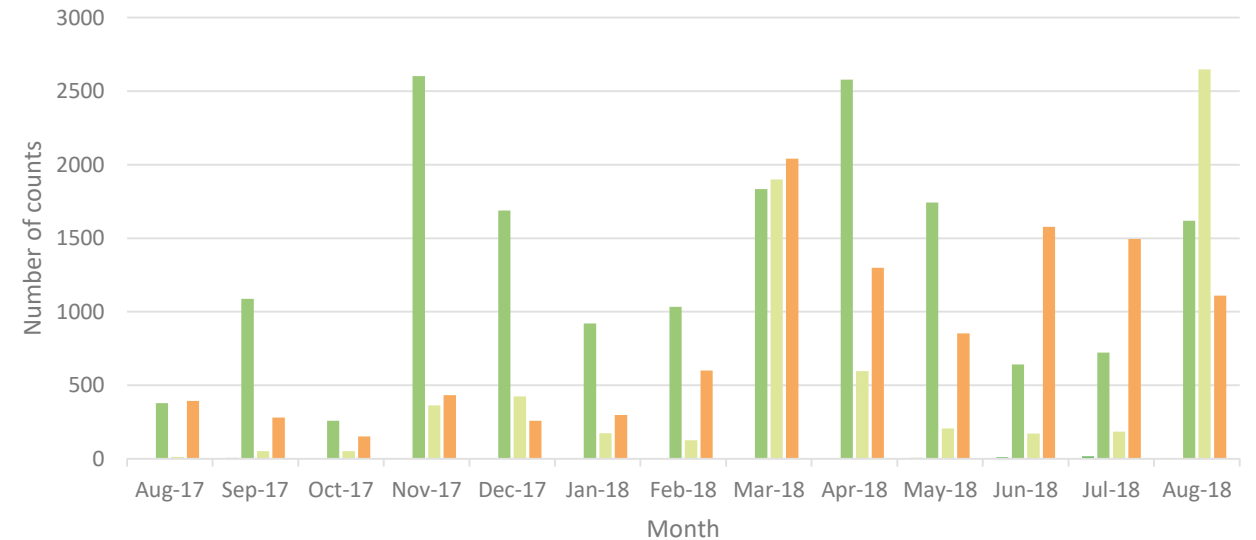
Reason Code 02- Change in Consumer Plant

- 563 Saltburn
- 257 Weymouth
- 177 Claremont

Reason Code 04- Tolerance Change

- 642 Colwyn Bay
- 241 Felixstowe
- 65 Beaumaris

2A.8 Count of AQ corrections by reason code



■ Reason Code 0000000001 ■ Reason Code 0000000002 ■ Reason Code 0000000003 ■ Reason Code 0000000004

Areas to focus:

- Reason Code 2- Herne Bay and Weymouth Bandstand between March 2018 to June 2018
- Reason Code 2- Saltburn, August 2018
- Reason Code 3- Herne Bay, August 2018
- Reason Code 4 – Tolerance changes between March 2018 to June 2018
- Reason Code 2 – Change in Consumer Plant between Nov 2017 to May 2018

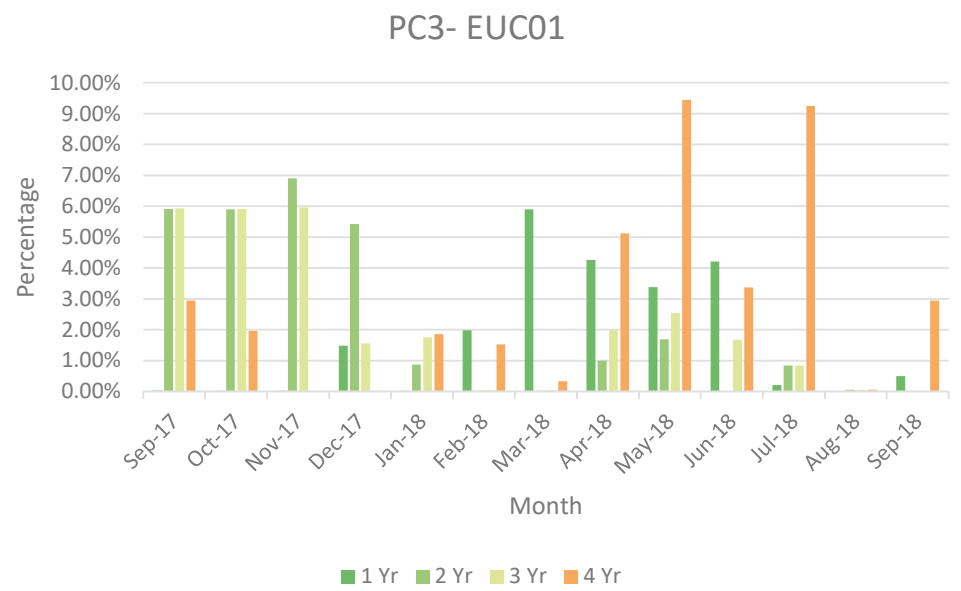
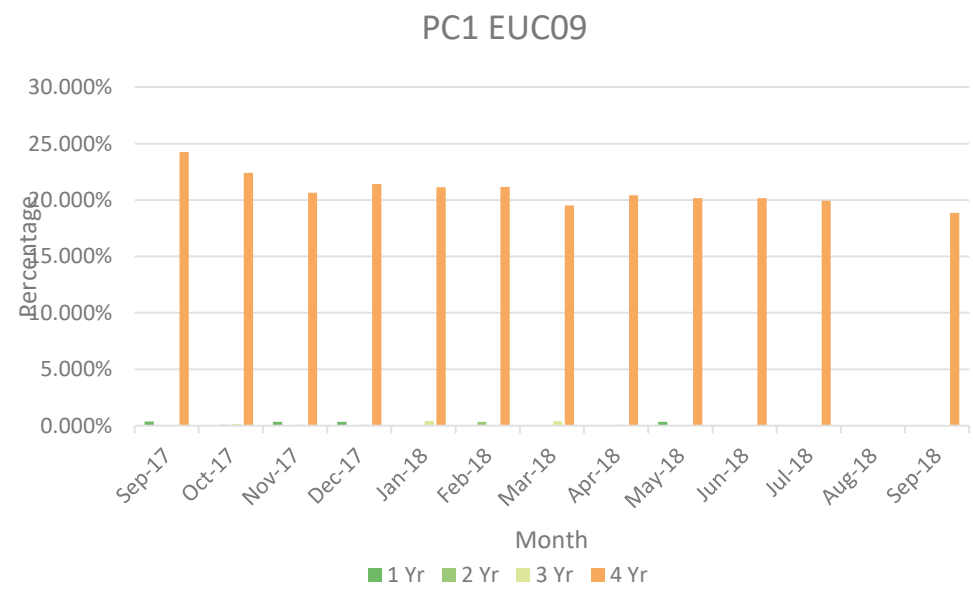
Recommendations:

- Investigate the relative increase in use of AQ corrections between March 2018 to June 2018
- Engage with Herne Bay and Weymouth Bandstand in understanding any obstacles they might have in relation to submitting reads with tolerance changes

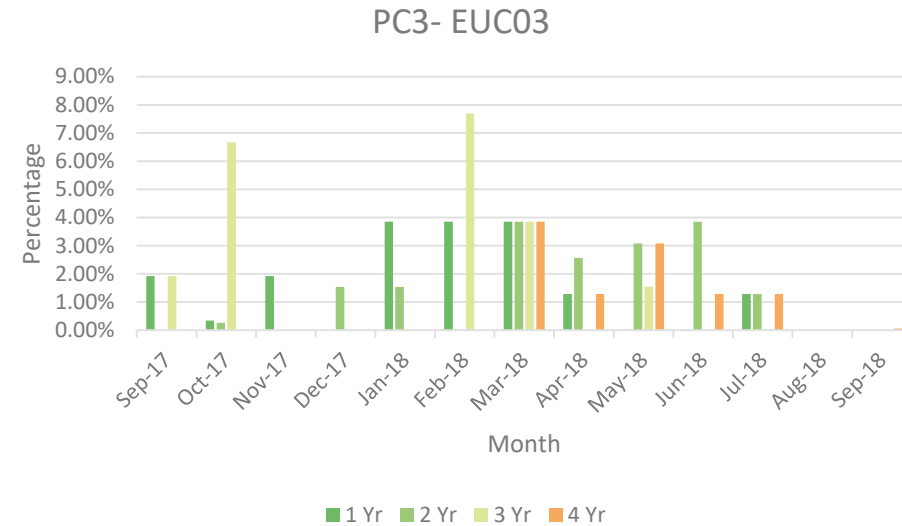
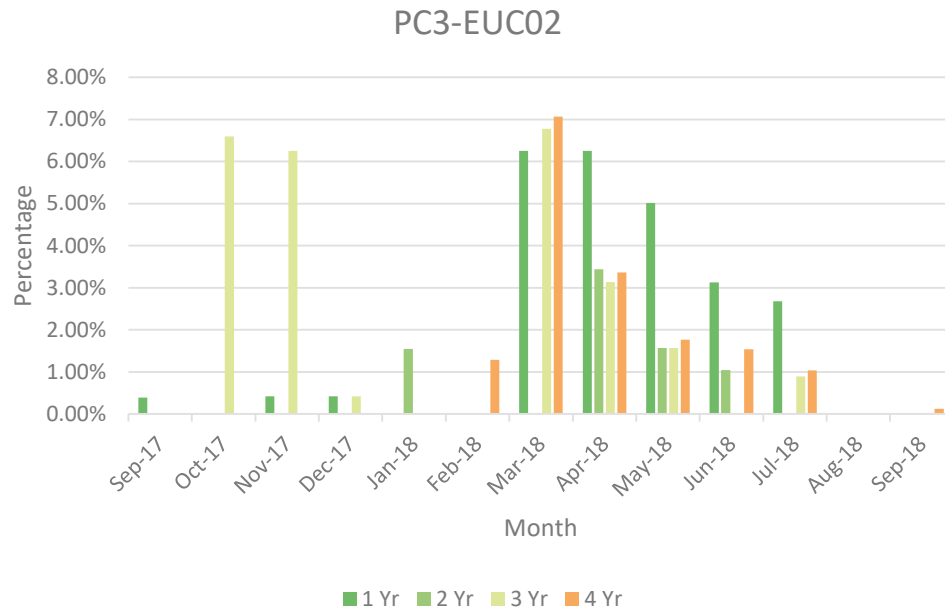
2A.7 No Reads Received for 1, 2, 3 or 4 years



Report measures the percentage of Shipper portfolio in the specified AQ band without a meter reading for the specified period.



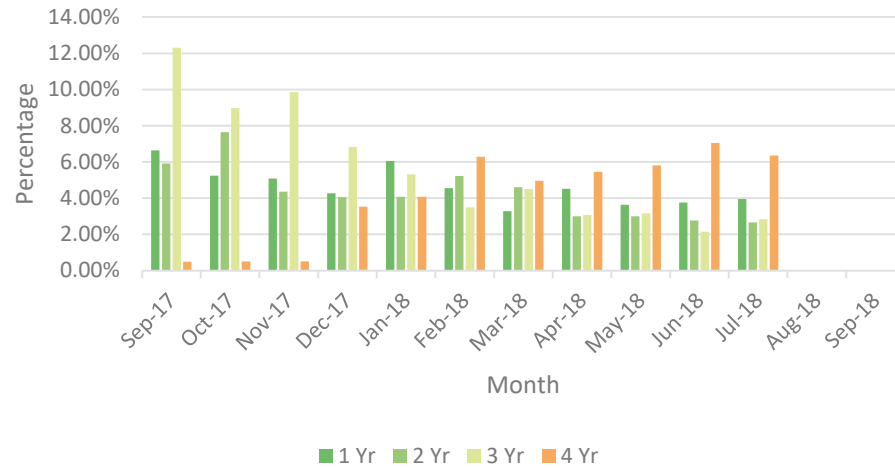
2A.7 No Reads Received for 1, 2, 3 or 4 years



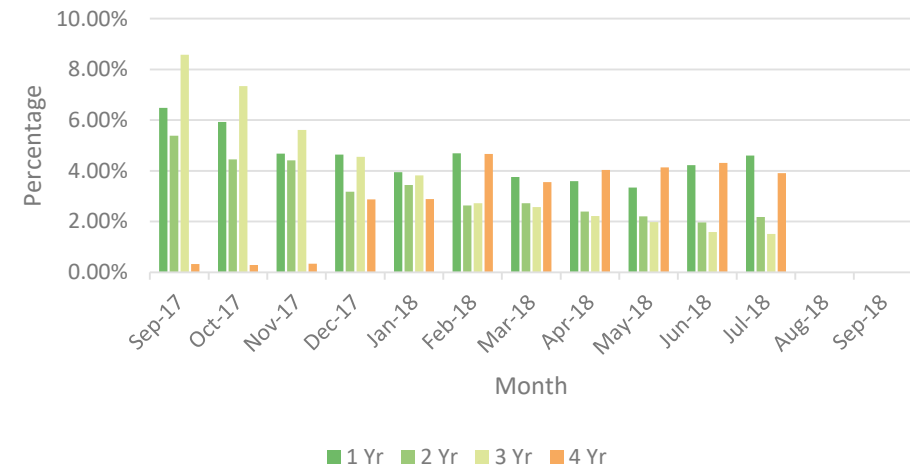
2A.7 No Reads Received for 1, 2, 3 or 4 years



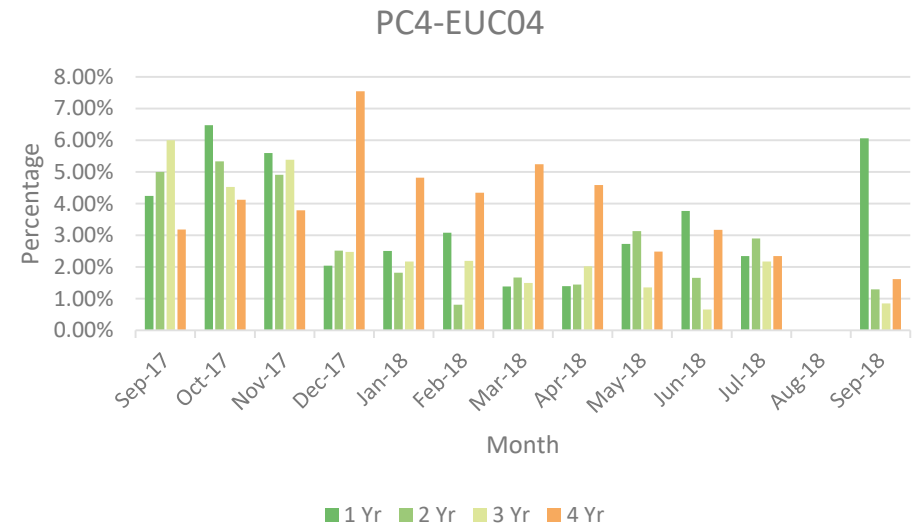
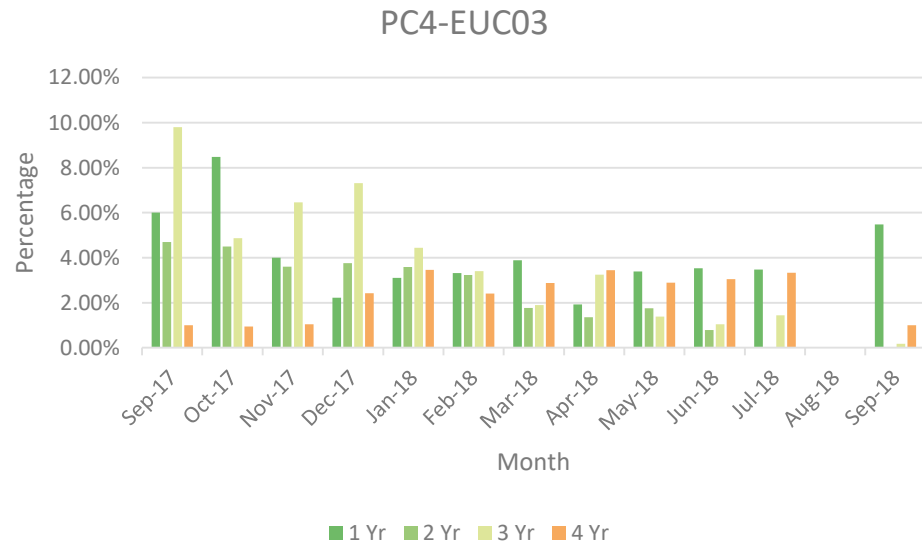
PC4- EUC01



PC4- EUC02



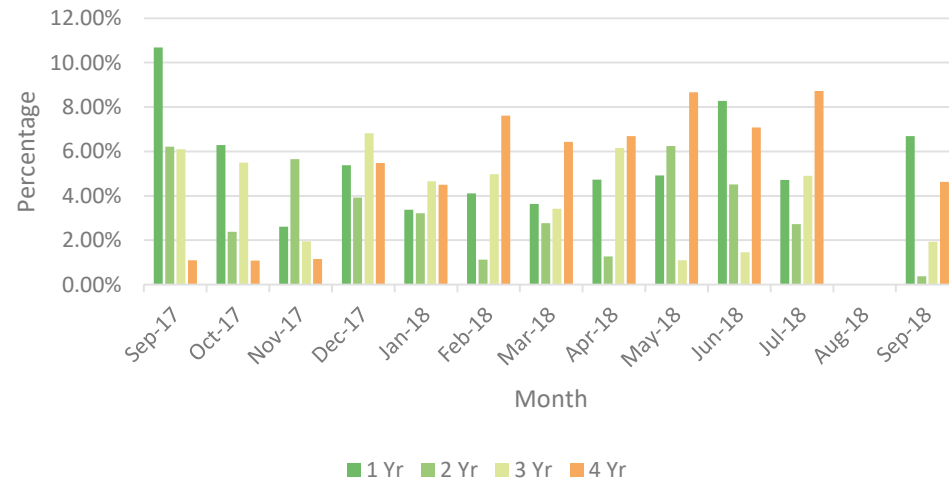
2A.7 No Reads Received for 1, 2, 3 or 4 years



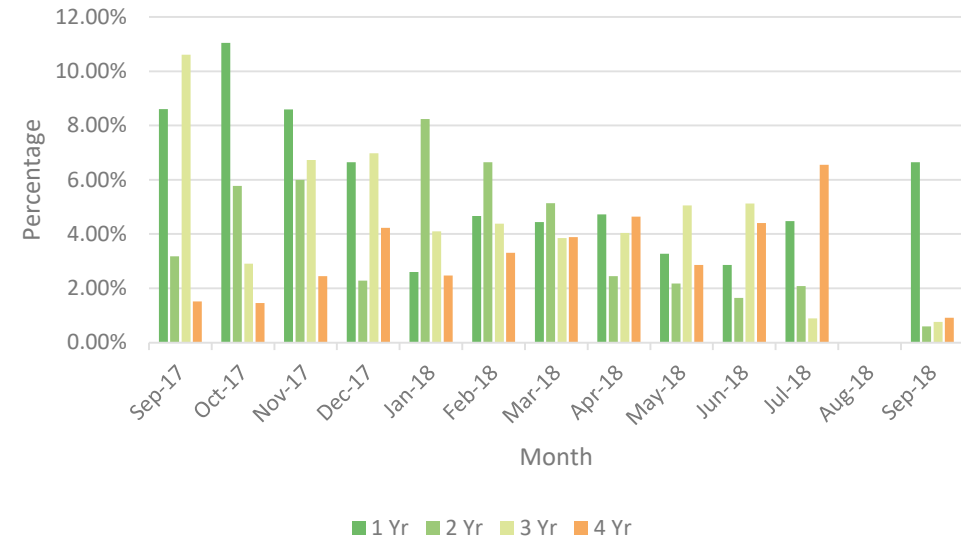
2A.7 No Reads Received for 1, 2, 3 or 4 years



PC4-EUC05



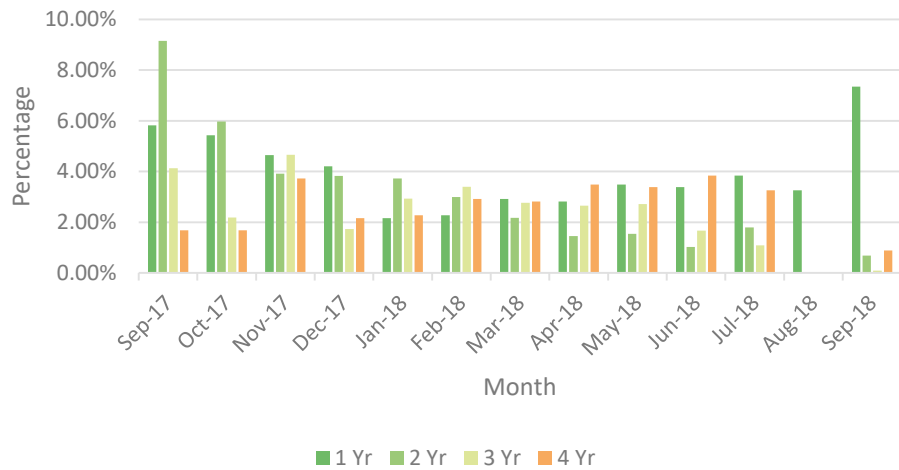
PC4- EUC06



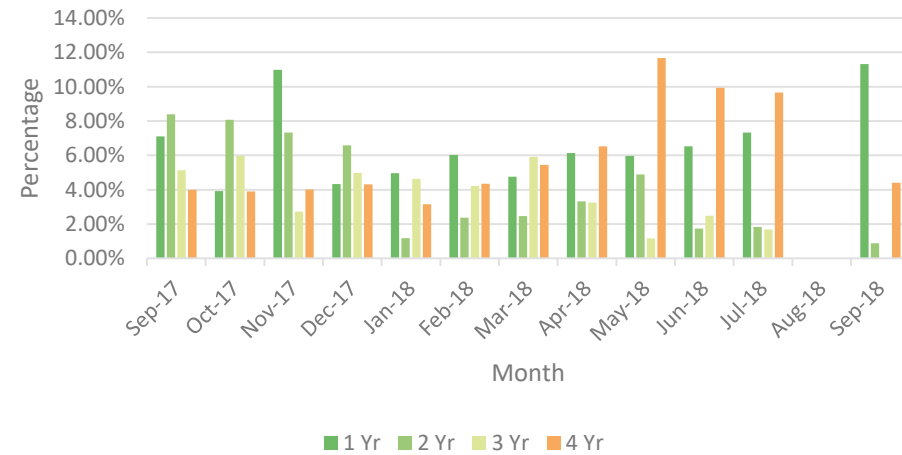
2A.7 No Reads Received for 1, 2, 3 or 4 years



PC4-EUC07



PC4-EUC08



2A.9 Standard CF AQ > 732,000 kWh



Report measures the count of Shipper Portfolio of MPRNs where AQ Correction process Used

EUC03

- ↑ 1 Gravesend
- ↑ 1 Monthly Change
- ↑ 1 Annual Change

EUC05

- ↑ 3 Gravesend
- ↑ 2 Colwyn Bay
- ↑ 1 Morecambe Central
- ↓ 4 Herne Bay
- ↓ 3 Folkestone
- ↓ 2 Southsea Clarence

Falmouth 113,
Morecambe Central 92, Colwyn Bay 70

- ↑ 0 Monthly Change
- ↑ 75 Annual Change

EUC07

- ↑ 2 Colwyn Bay
- ↓ 2 Weymouth
- ↓ 1 Falmouth
- ↓ 1 Morecambe West
- Falmouth 8, Colwyn Bay 8, Southsea Clarence 7
- ↓ 2 Monthly Change
- ↑ 7 Annual Change

EUC04

- ↑ 33 Colwyn Bay
- ↑ 32 Herne Bay
- ↑ 17 Southsea Clarence
- ↓ 58 Folkestone
- ↓ 2 Claremont
- ↓ 2 Rothesay
- ↓ 2 Weymouth

Morecambe Central 594, Falmouth 509, Colwyn Bay 586

- ↑ 84 Monthly Change
- ↑ 1302 Annual Change

EUC06

- ↑ 1 Morecambe Central
- ↑ 1 Southsea Clarence
- ↓ 1 Gravesend
- ↓ 1 Mumbles

Falmouth 29,
Gravesend 22,
Morecambe Central 14

- ↑ 0 Monthly Change
- ↑ 19 Annual Change

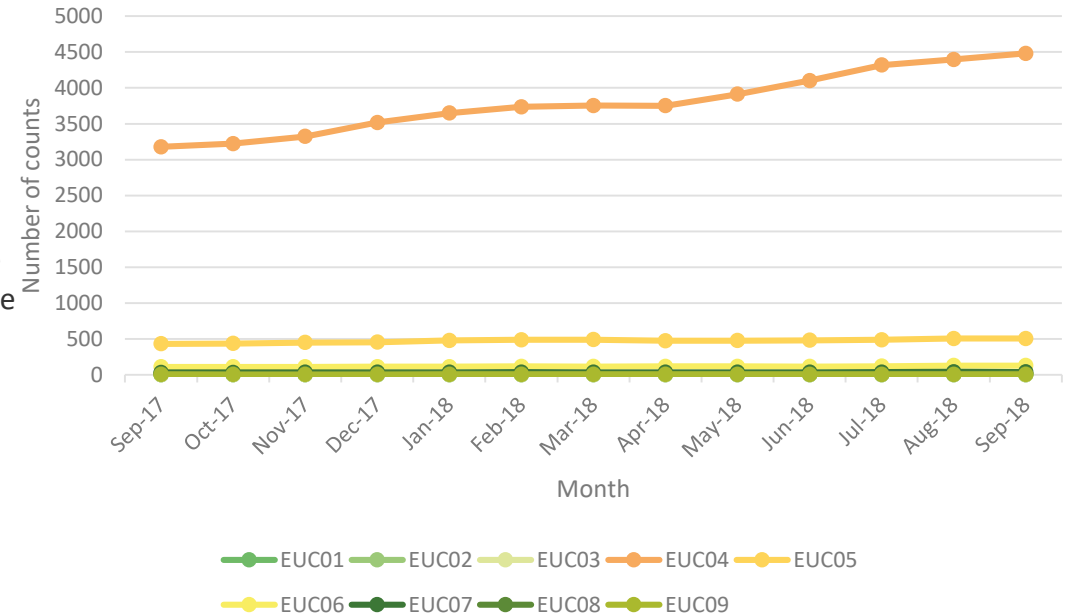
EUC08

- ↑ 2 Llandudno
- ↑ 1 Morecambe Central
- ↑ 1 Colwyn Bay
- ↓ 1 Gravesend
- Colwyn Bay 2, Harwich 2, Llandudno 2, Morecambe Central 2.
- ↑ 4 Monthly Change
- ↑ 2 Annual Change

EUC09

- ↑ 1 Llandudno
- ↑ 1 Gravesend
- ↓ 1 Eastbourne
- Morecambe Central 2
- ↑ 1 Monthly Change
- ↑ 1 Annual Change

2A.9 Count of sites above >732,000 kWh using standard CF



2A.10 Replaced Meter Reads

Report measures the count of meter reading replacements which results in reconciliation adjustment

EUC01

↓ 4111 Claremont ↑ 21 Harwich
 ↓ 1840 Herne Bay ↑ 20 Gravesend
 ↓ 1990 Deal ↑ 20 Rhyl

 ↓ 13705 - Monthly change Claremont **3478**,
 Deal **3344**,
 ↓ 13845- Annual change Weymouth **1362**

EUC03

↓ 100 Falmouth ↑ 295 Claremont
 ↓ 10 Gravesend ↑ 278 Deal
 ↑ 160 Herne Bay

 ↑ 1184 - Monthly change Claremont **299**,
 ↑ 1215 Annual change Deal **288**,
 Herne Bay **162**

EUC05

↓ 100 Falmouth ↑ 286 Deal
 ↓ 10 Gravesend ↑ 209 Claremont
 ↑ 72 Weymouth

 ↑ 817 - Monthly change Claremont **299**,
 ↑ 835- Annual change Deal **288**,
 Herne Bay **162**

EUC02

↓ 109 Falmouth ↑ 1752 Claremont
 ↓ 49 Blackpool North ↑ 1154 Deal
 ↓ 39 Birnbeck ↑ 905 Herne Bay

 ↑ 7182 - Monthly change Claremont **1778**,
 ↑ 7538 - Annual change Deal **1238**,
 Herne Bay **960**

EUC04

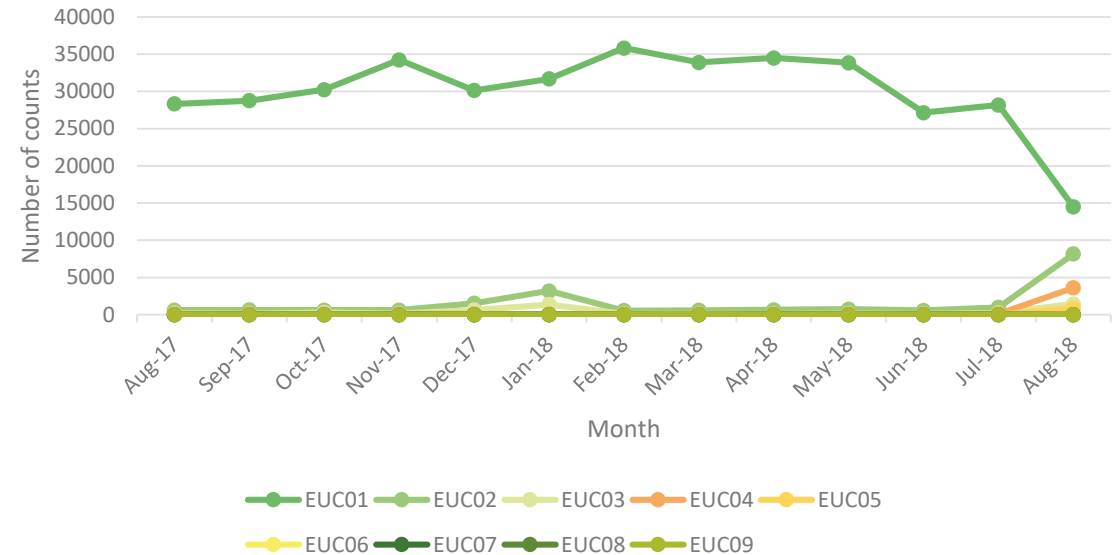
↓ 27 Gravesend ↑ 943 Claremont
 ↓ 3 Burnham-on-Sea ↑ 839 Deal
 ↓ 2 Eastbourne ↑ 348 Weymouth

 Claremont **943**,
 ↑ 3485 - Monthly change Deal **847**,
 ↑ 3503- Annual change Weymouth **347**

Areas to focus:

- April 2018 for PC1 is outlier.
- Period between August 2017 and November 2017 because of the increase in estimated reads submitted.

2A.10 Count of industry total of meter reading replacements



Data cannot be normalised for EUC06 - 09

Recommendations:

- Engagement with Clacton, Gravesend, Harwich and Hastings to understand their processes.

PAFA@Gemserv.com

