

# PARR Dashboards

---

9 October 2018

PAFA



# 2A.1 Estimated & Check Reads - Product Classes 1 & 2



Report measures the percentage of each shippers portfolio where estimated reads were provided. Count of each shippers portfolio where check reads were provided.

## PC1

- ↓ 11.09% Ramsey
- ↓ 5.50% Colwyn Bay
- ↓ 3.55% Hastings

- ↑ 1.80% Folkestone
- ↑ 1.37% Southsea Clarence

- ↓ 1.17% - Monthly change
- ↓ 17.00% - Annual change

Harwich **17.84%**, Weymouth **16.13%**,  
Southsea Clarence **11.85%**.

## PC2

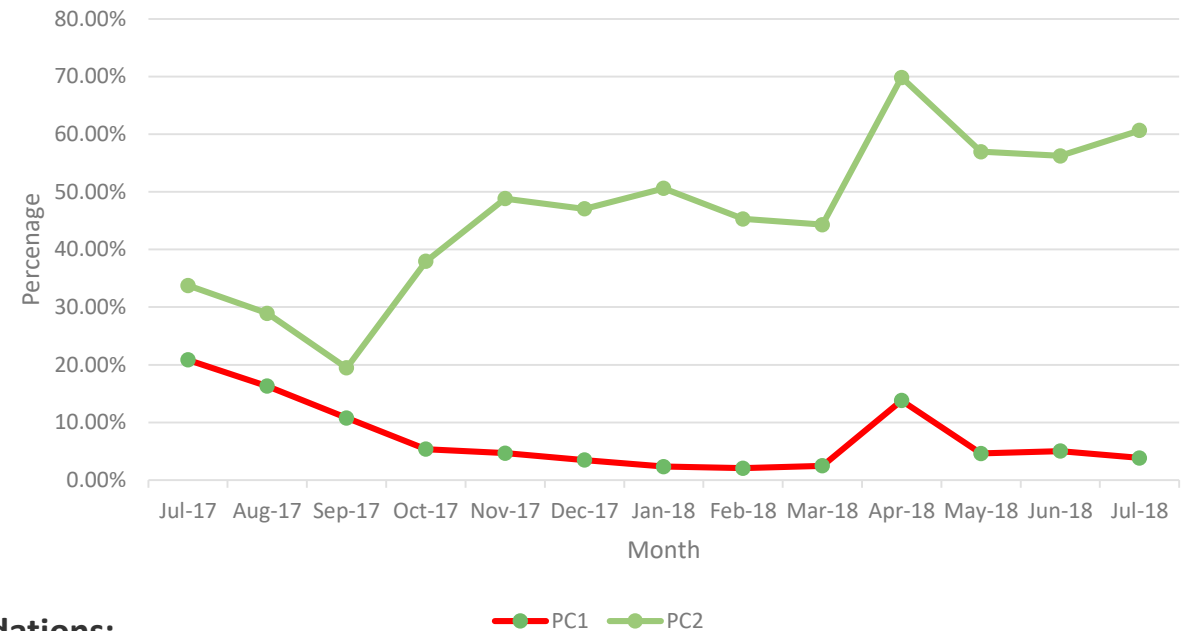
- ↓ 14.82% Gravesend
- ↓ 9.65% Eastbourne
- ↓ 9.15% Mumbles

- ↑ 95.65% Ramsey
- ↑ 19.14% Hastings
- ↑ 16.42% Southsea Clarence

- ↑ 5.56% Monthly change
- ↑ 98.31% Annual change

Walton-on-Naze **100%**, Clacton  
**98.39%**, Harwich **95.30%**

2A.1 Percentage of Estimated Reads for PC1 & PC2



### Areas to focus:

- April 2018 for PC1 and PC2 is outlier.
- Period between August 2017 and November 2017 because of the increase in estimated reads submitted.

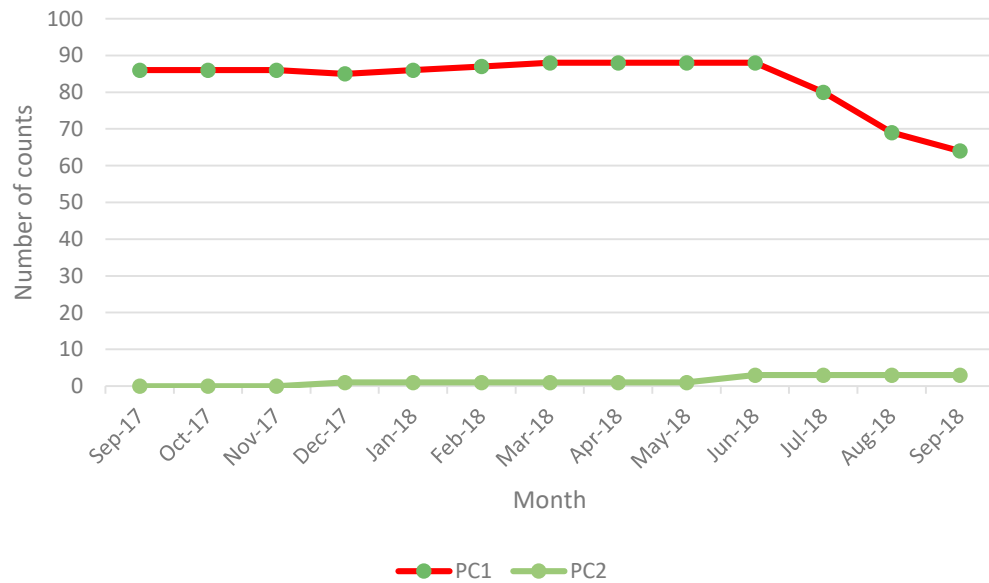
### Recommendations:

- Engagement with Harwich, Weymouth and Southsea Clarence in PC1 to understand their processes.
- Engagement with Walton-on-Naze, Clacton and Harwich in PC2 to understand their processes.

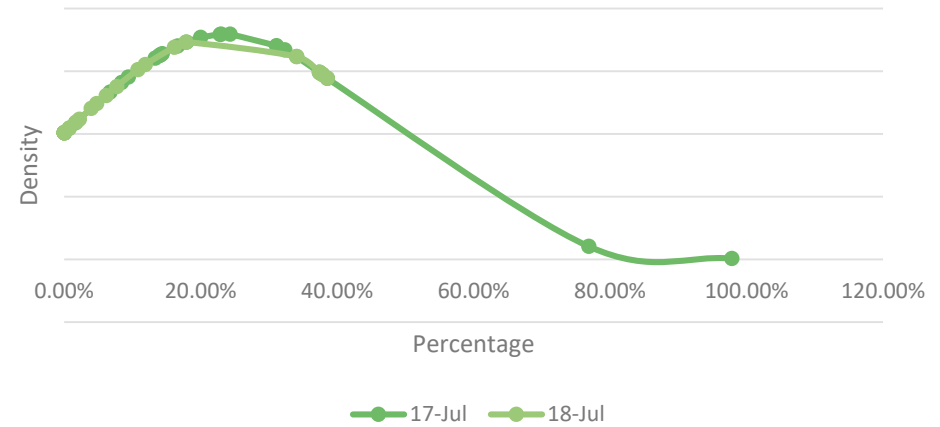
# 2A.1 Estimated & Check Reads - Product Classes 1 & 2



2A.1 Count of Check Reads completed for PC1 and PC2



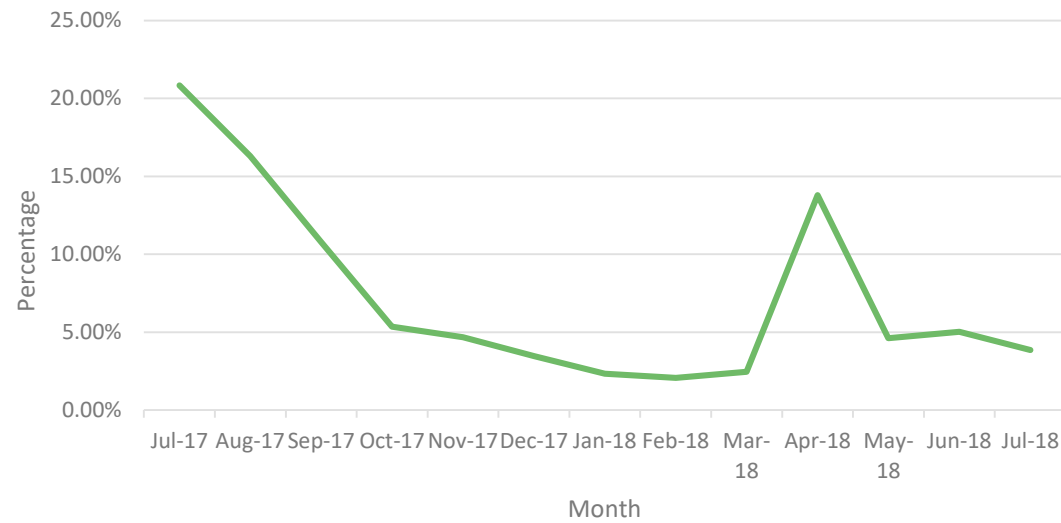
2A.1- 12 month comparison (Average of PC1 Estimated Reads)



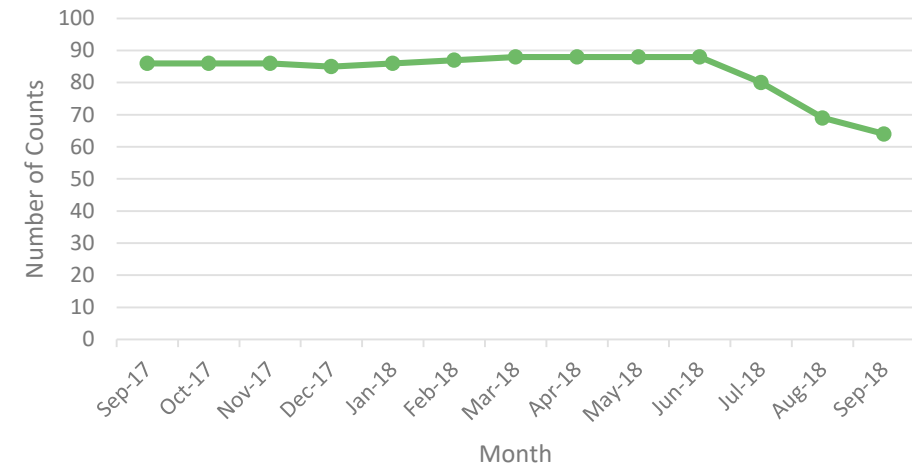
# 2A.1 Estimated & Check Reads - Product Classes 1 & 2



2A.1 PC1 Estimated Read Totals



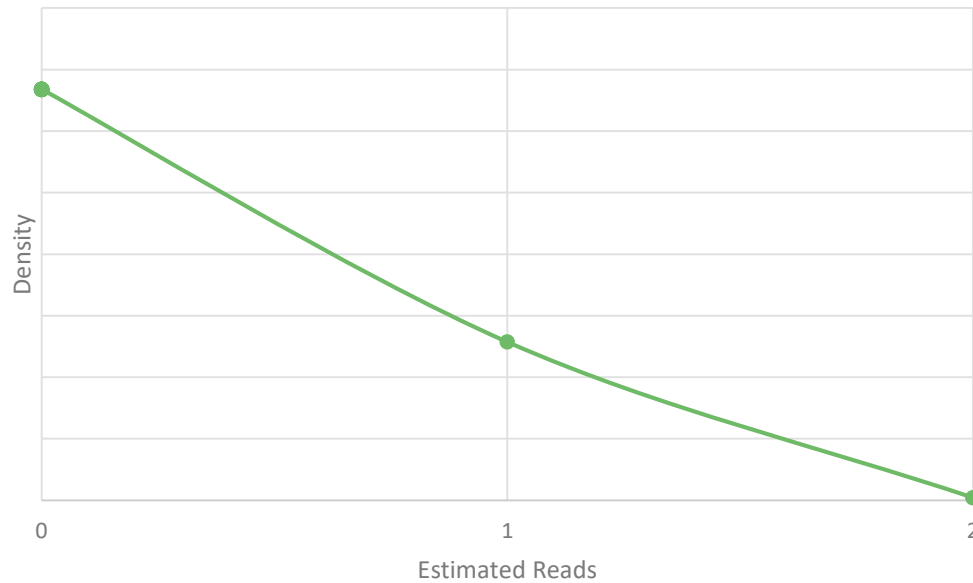
2A.1 PC1 Total Check reads



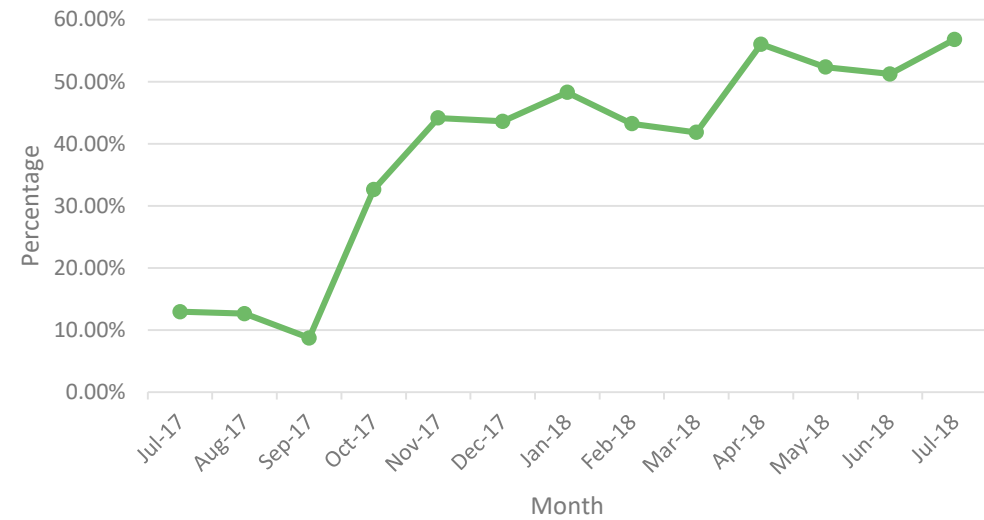
# 2A.1 Estimated & Check Reads - Product Classes 1 & 2



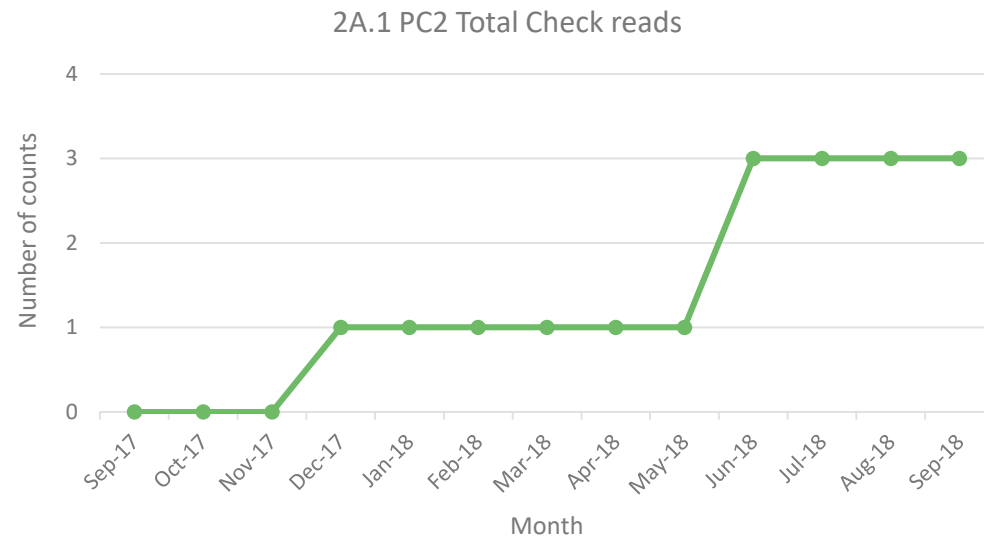
2A.1- 12 month comparison (Average of PC2 Estimated Reads)



2A.1 PC2 Estimated Read Totals



# 2A.1 Estimated & Check Reads - Product Classes 1 & 2

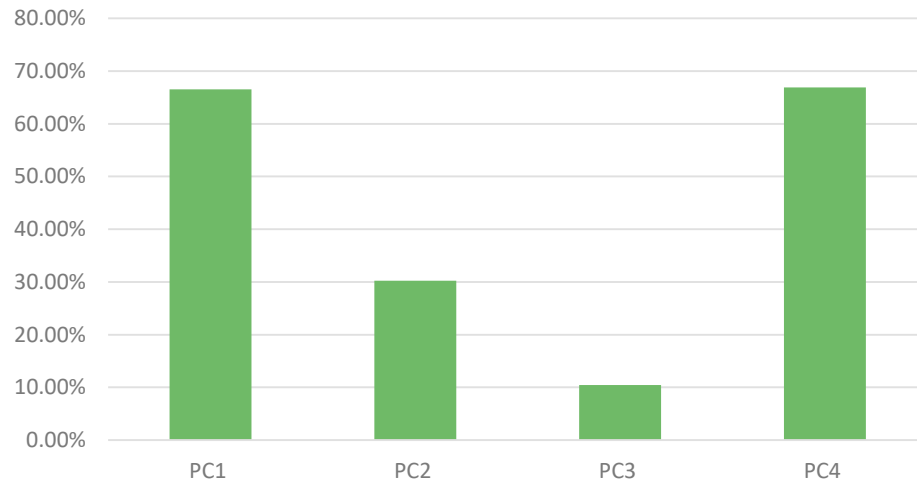


# 2A.5- Read Performance



Report measures the percentage of Shipper portfolio submitting reads.

2A.5 Percentage of Shipper portfolio submitting reads



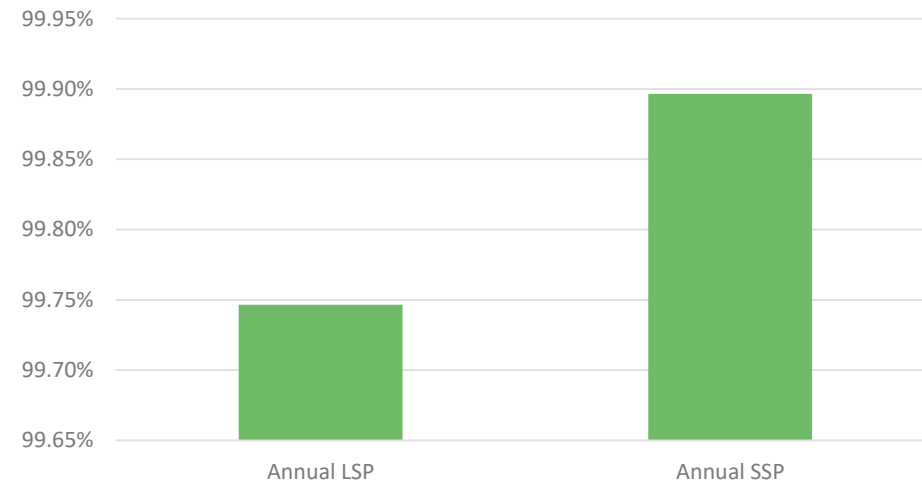
**PC1**  
 100% Canary Wharf  
 100% Ramsey  
 90% Gravesend

**PC2**  
 86.23% Falmouth  
 83.33% Colwyn Bay  
 48.75% Morecambe Central

**PC3**  
 83.33% Colwyn Bay  
 33.33% Cromer  
 32.12% Falmouth

**PC4**  
 93.79% Gravesend  
 87.04% Morecambe Central  
 85.71% Ryhl

2A.5 Percentage of Shipper portfolio submitting reads



**Areas to focus:**

- The industry processes used to manage the submitting of reads for each Product Class. With specific reference to PC1 to begin with.

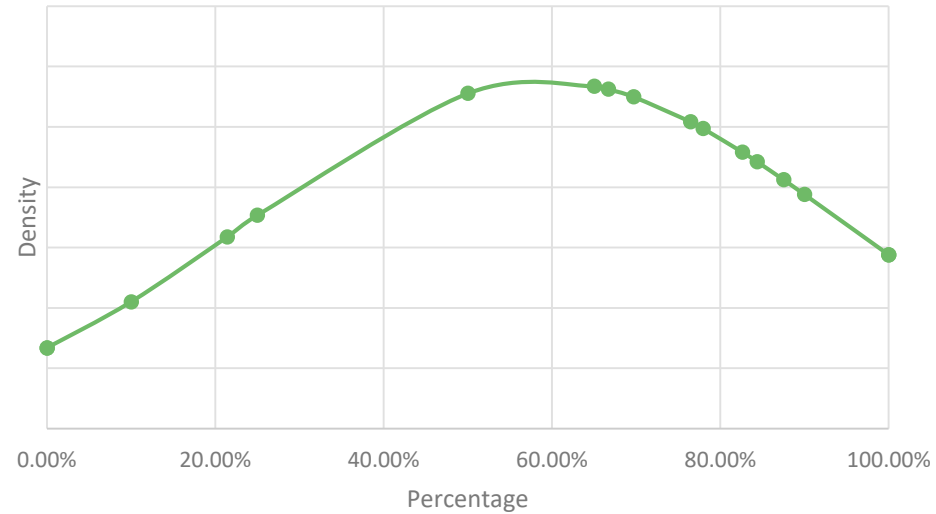
**Recommendations:**

- Investigate the current industry standard for the last twelve months.
- Engage with industry in understanding any obstacles they might be having in relation to submitting reads specifically PC1

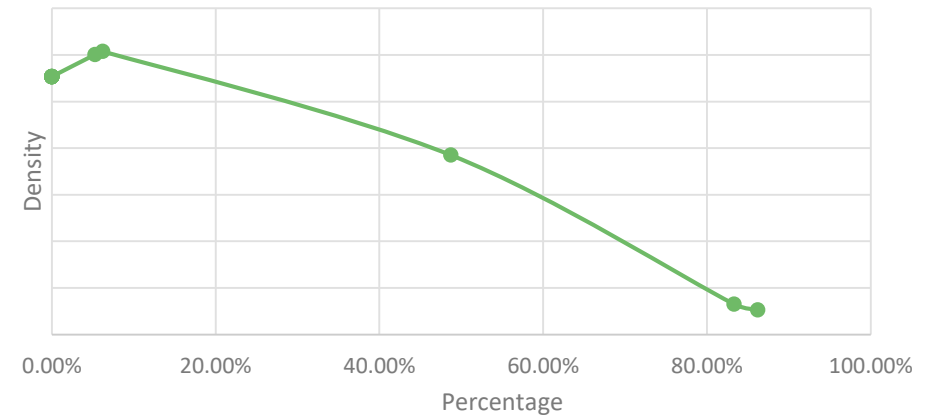
# 2A.5- Read Performance



2A.5 Distribution of percentage of PC1 sites providing meter reads



2A.5 Distribution of percentage of PC2 sites providing meter reads

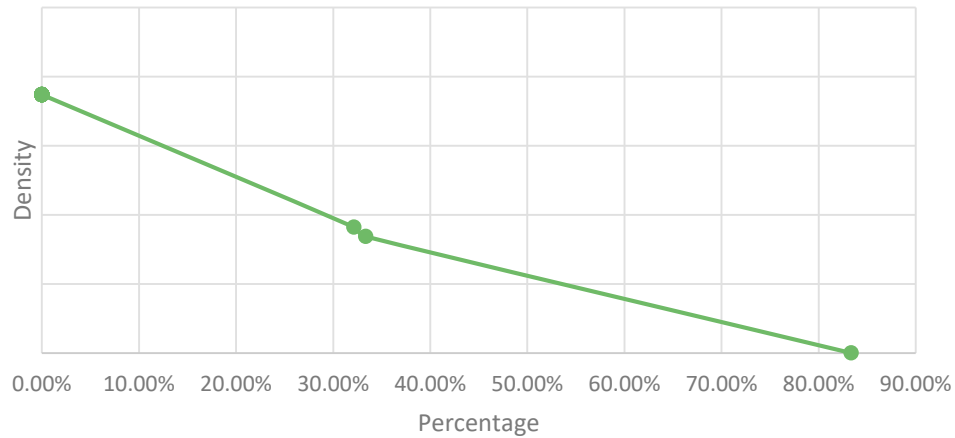




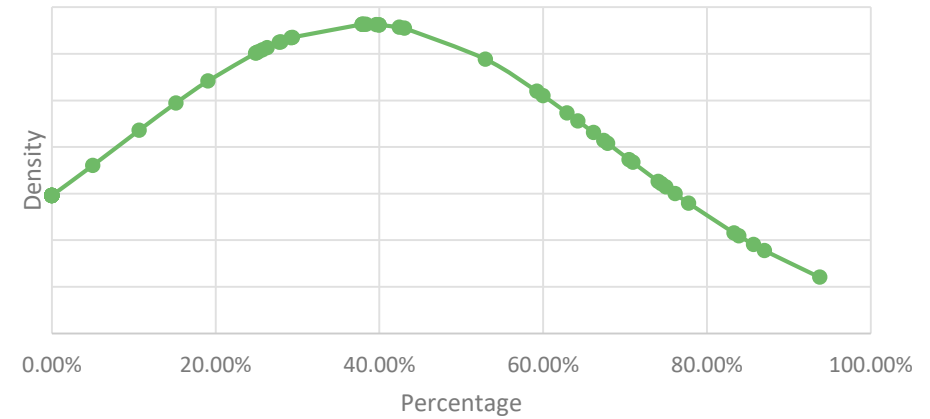
# 2A.5- Read Performance



2A.5 Distribution of percentage of PC3 sites providing meter reads



2A.5 Distribution of percentage of PC4 sites providing meter reads

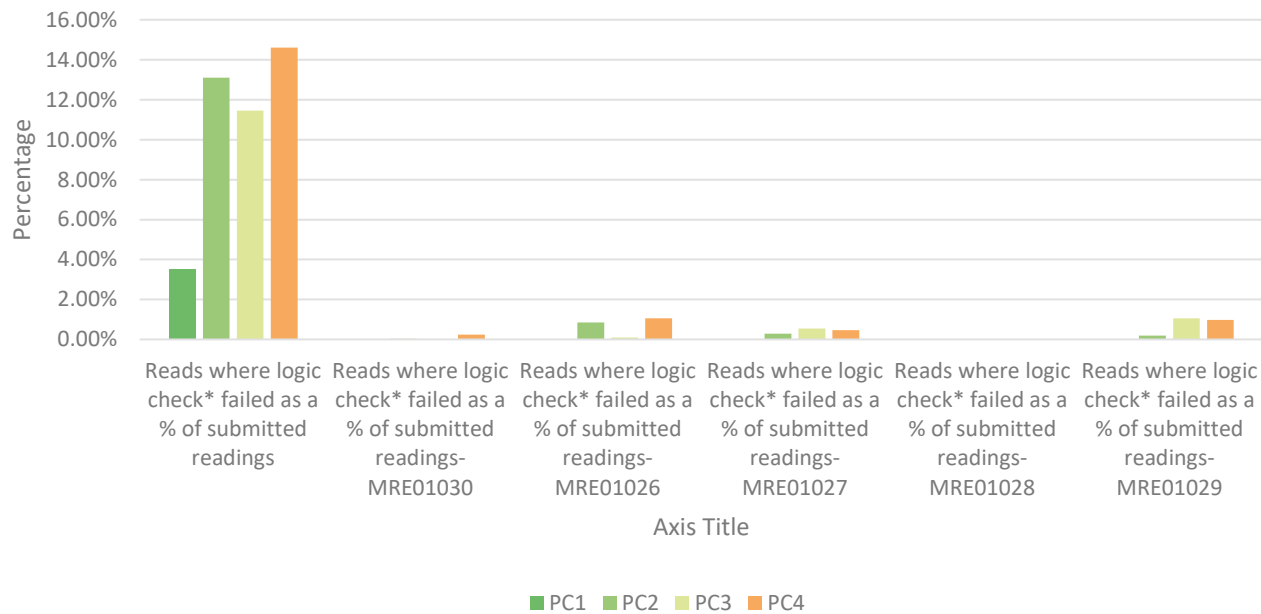


# 2A.6 Meter Read Validity Monitoring



Report measures the percentage of Shipper portfolio where reads submitted failed validation.

2A.6 Percentage of meter read validity by Product Class



| Product Class | % of submitted reads  | MRE01030                 | MRE01026         | MRE01027         | MRE01028 | MRE01029           |
|---------------|-----------------------|--------------------------|------------------|------------------|----------|--------------------|
| 1             | 100% Paignton         |                          |                  |                  |          |                    |
| 2             | 70.10% Hastings       | 3.44% Folkestone         | 4.95% Gravesend  | 2.44% Gravesend  |          | 0.74% Eastbourne   |
| 3             | 72.99% Burnham-on-Sea | 0.69% Weymouth Bandstand | 6.90% Colwyn Bay | 21.89% Herne Bay |          | 4.98% Mumbles      |
| 4             | 100% Culver           | 25.00% Totland Bay       | 6.54% Kilcreggan | 10.22% Cromer    |          | 25.00% Totland Bay |

# 2A.8 AQ Correction by Reason Code

Report measures the count of Shipper Portfolio of MPRNs where AQ Correction process Used

## Reason Code 01- Confirmed Theft

- 1 Beaumaris
- 1 Blackpool North
- 1 Eastbourne
- 1 Gravesend

## Reason Code 03- Commencement of New Business

- 2319 Herne Bay
- 316 Southend
- 3 Eastbourne

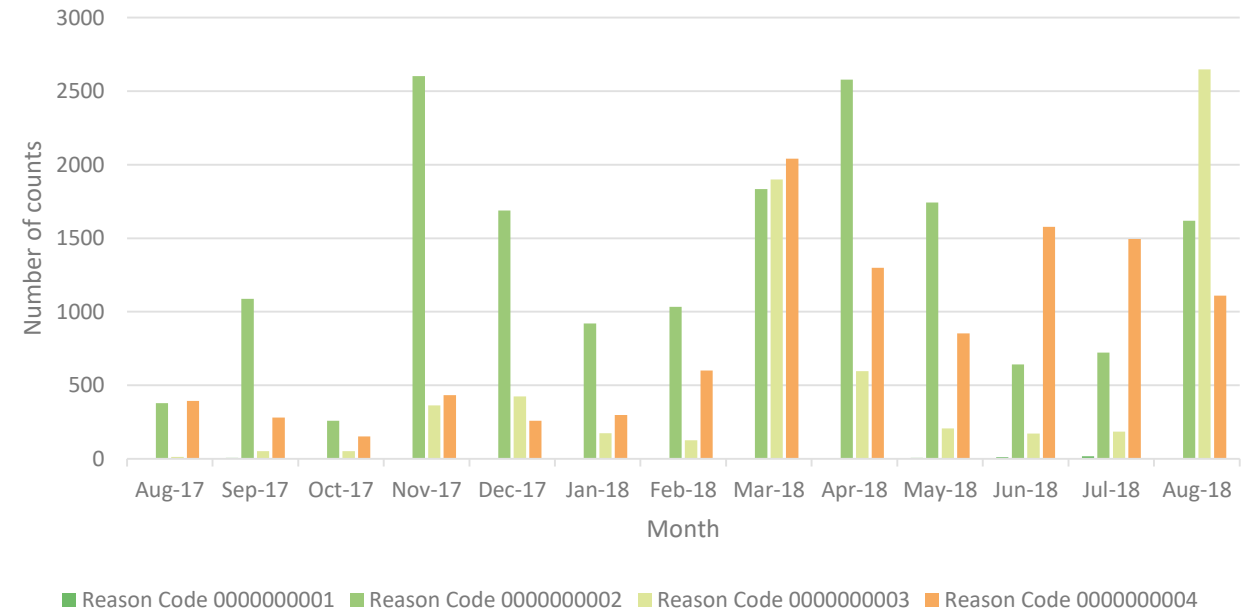
## Reason Code 02- Change in Consumer Plant

- 563 Saltburn
- 257 Weymouth
- 177 Claremont

## Reason Code 04- Tolerance Change

- 642 Colwyn Bay
- 241 Felixstowe
- 65 Beaumaris

2A.8 Count of AQ corrections by reason code



### Areas to focus:

- Reason Code 2- Herne Bay and Weymouth Bandstand between March 2018 to June 2018
- Reason Code 2- Saltburn, August 2018
- Reason Code 3- Herne Bay, August 2018
- Reason Code 4 – Tolerance changes between March 2018 to June 2018
- Reason Code 2 – Change in Consumer Plant between Nov 2017 to May 2018

### Recommendations:

- Investigate the relative increase in use of AQ corrections between March 2018 to June 2018
- Engage with Herne Bay and Weymouth Bandstand in understanding any obstacles they might have in relation to submitting reads with tolerance changes

# 2A.9 Standard CF AQ > 732,000 kWh



Report measures the count of Shipper Portfolio of MPRNs where AQ Correction process Used

## EUC03

- ↑ 1 Gravesend
- ↑ 1 Monthly Change
- ↑ 1 Annual Change

## EUC05

- ↑ 3 Gravesend
- ↑ 2 Colwyn Bay
- ↑ 1 Morecambe Central
- ↓ 4 Herne Bay
- ↓ 3 Folkestone
- ↓ 2 Southsea Clarence

Falmouth 113,  
Morecambe Central 92, Colwyn Bay 70

- ↑ 0 Monthly Change
- ↑ 75 Annual Change

## EUC07

- ↑ 2 Colwyn Bay
- ↓ 2 Weymouth
- ↓ 1 Falmouth
- ↓ 1 Morecambe West
- Falmouth 8, Colwyn Bay 8, Southsea Clarence 7
- ↓ 2 Monthly Change
- ↑ 7 Annual Change

## EUC04

- ↑ 33 Colwyn Bay
- ↑ 32 Herne Bay
- ↑ 17 Southsea Clarence
- ↓ 58 Folkestone
- ↓ 2 Claremont
- ↓ 2 Rothesay
- ↓ 2 Weymouth

Morecambe Central 594, Falmouth 509, Colwyn Bay 586

- ↑ 84 Monthly Change
- ↑ 1302 Annual Change

## EUC06

- ↑ 1 Morecambe Central
- ↑ 1 Southsea Clarence
- ↓ 1 Gravesend
- ↓ 1 Mumbles

Falmouth 29,  
Gravesend 22,  
Morecambe Central 14

- ↑ 0 Monthly Change
- ↑ 19 Annual Change

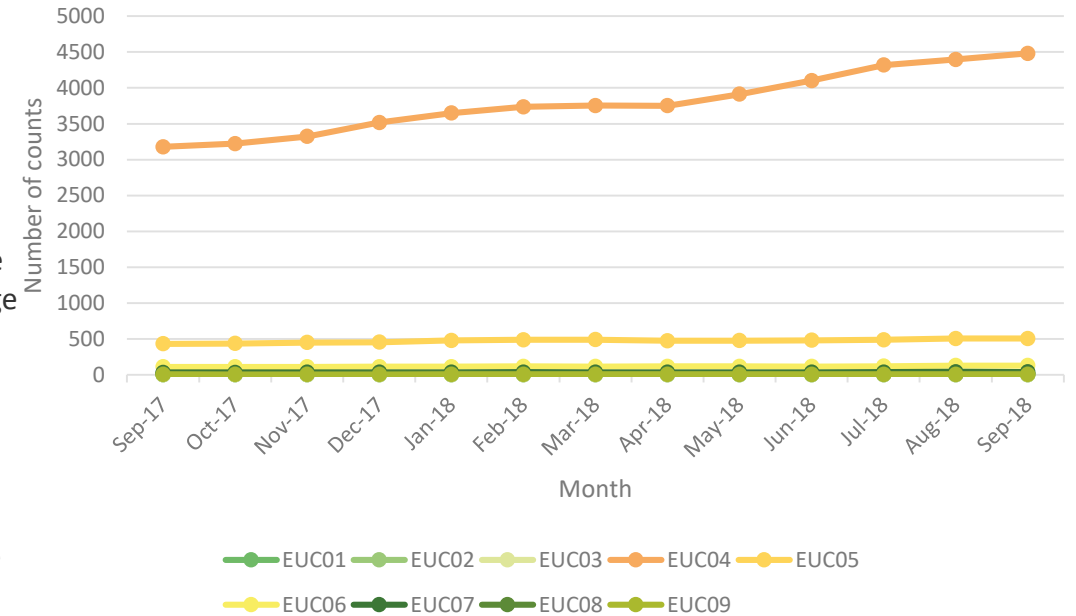
## EUC08

- ↑ 2 Llandudno
- ↑ 1 Morecambe Central
- ↑ 1 Colwyn Bay
- ↓ 1 Gravesend
- Colwyn Bay 2, Harwich 2, Llandudno 2, Morecambe Central 2.
- ↑ 4 Monthly Change
- ↑ 2 Annual Change

## EUC09

- ↑ 1 Llandudno
- ↑ 1 Gravesend
- ↓ 1 Eastbourne
- Morecambe Central 2
- ↑ 1 Monthly Change
- ↑ 1 Annual Change

2A.9 Count of sites above >732,000 kWh using standard CF



PAFA@Gemserv.com

