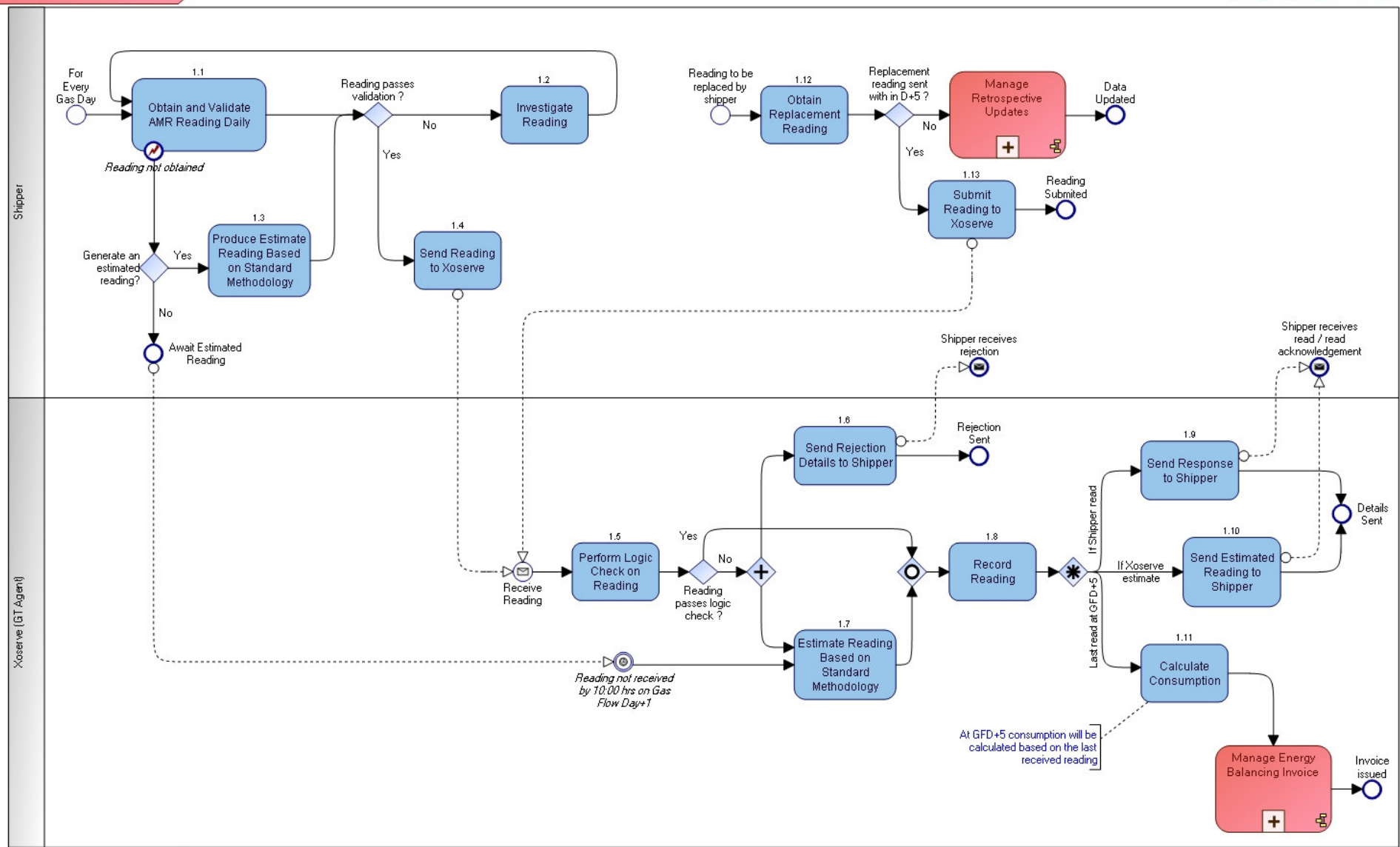




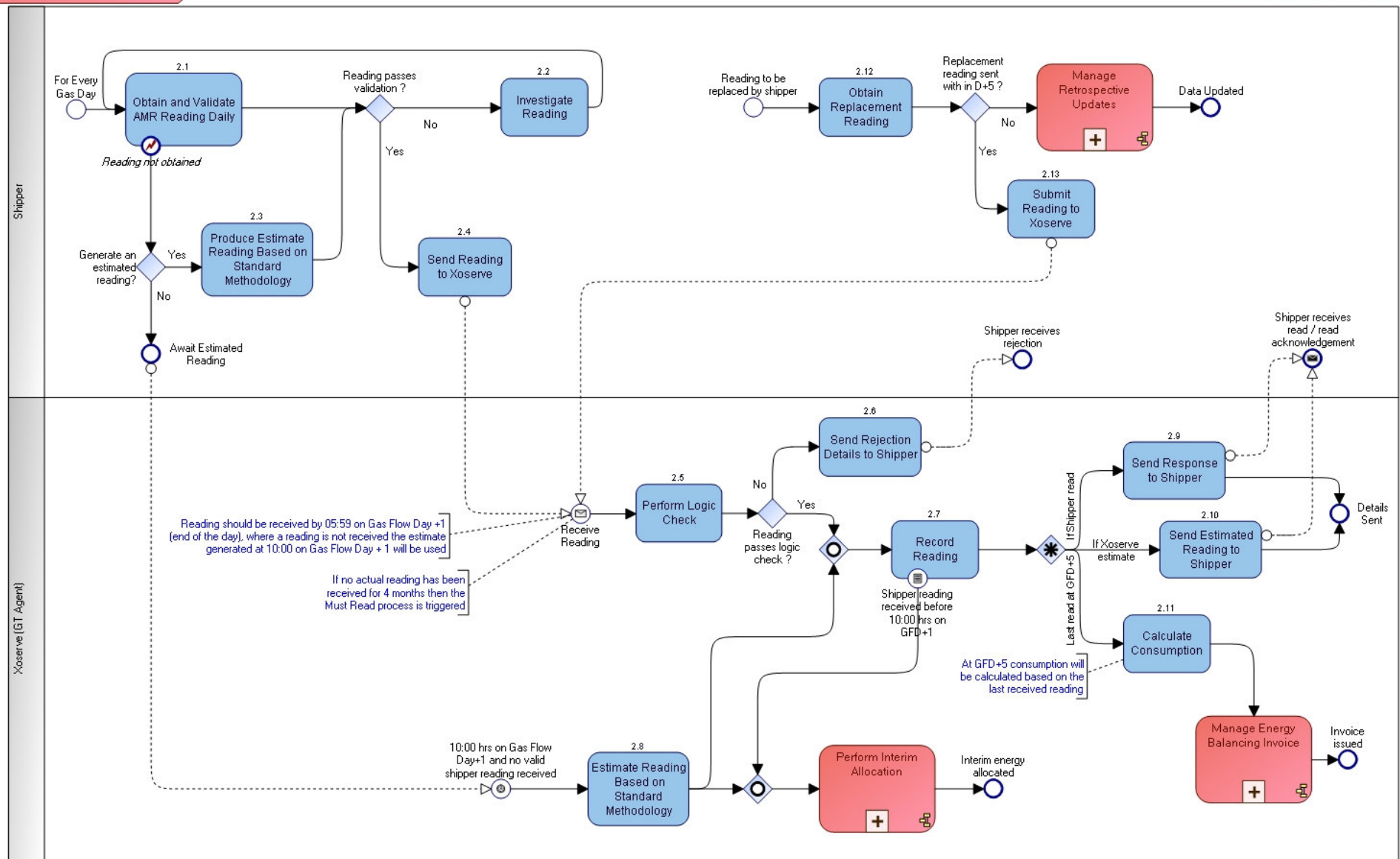
respect > commitment > teamwork

AMR Meter Reading

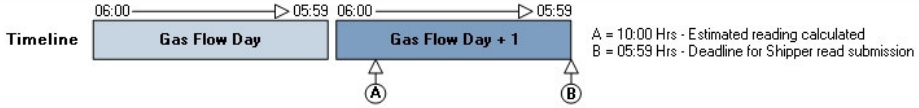
Draft To-Be Process Maps v0.7

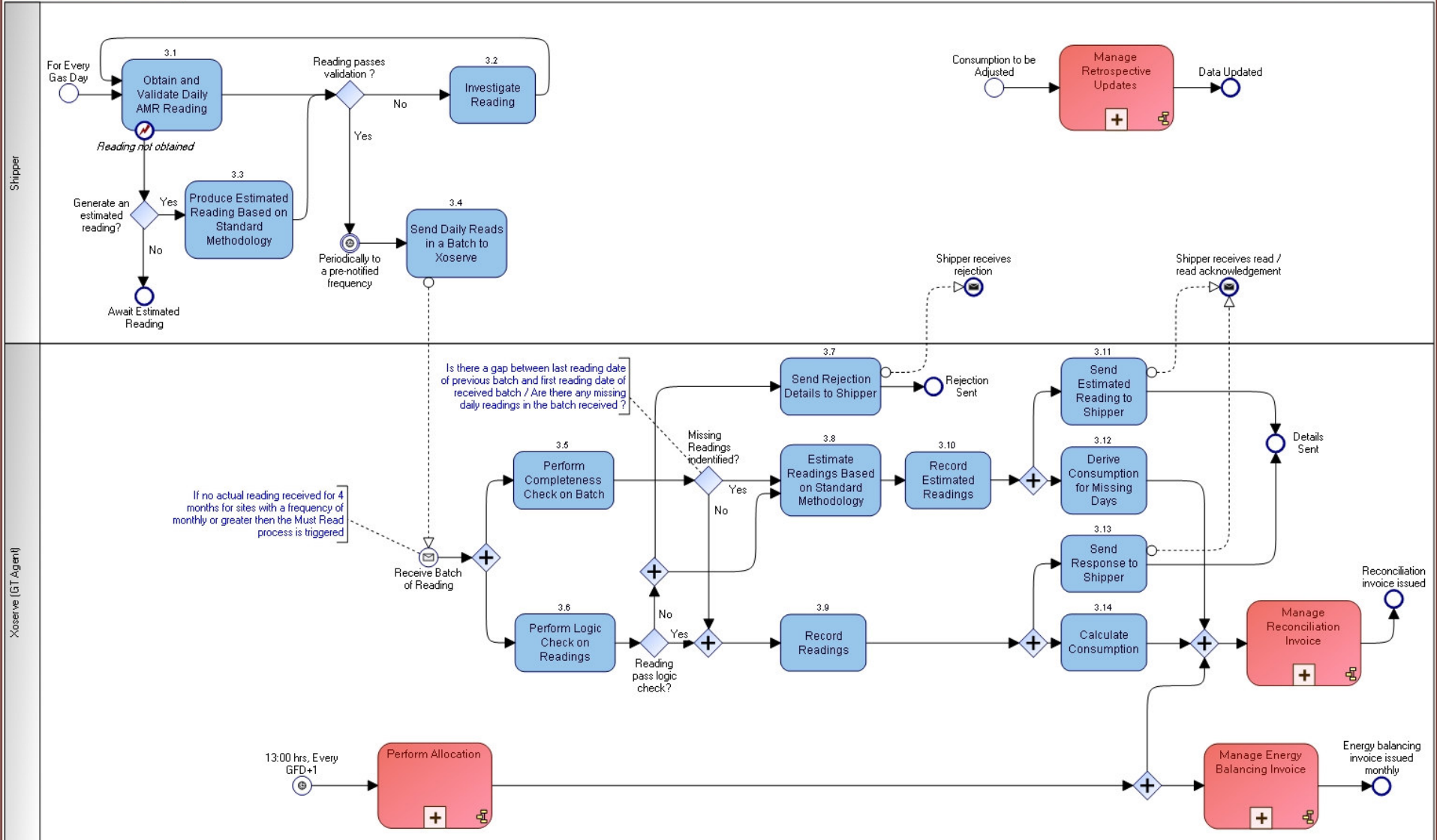


Version Control	
Owned by:	Xserve (ios)
Version No:	0.7
Status:	Under Review
Date updated:	08/03/2011
Updated by:	Michael Payley

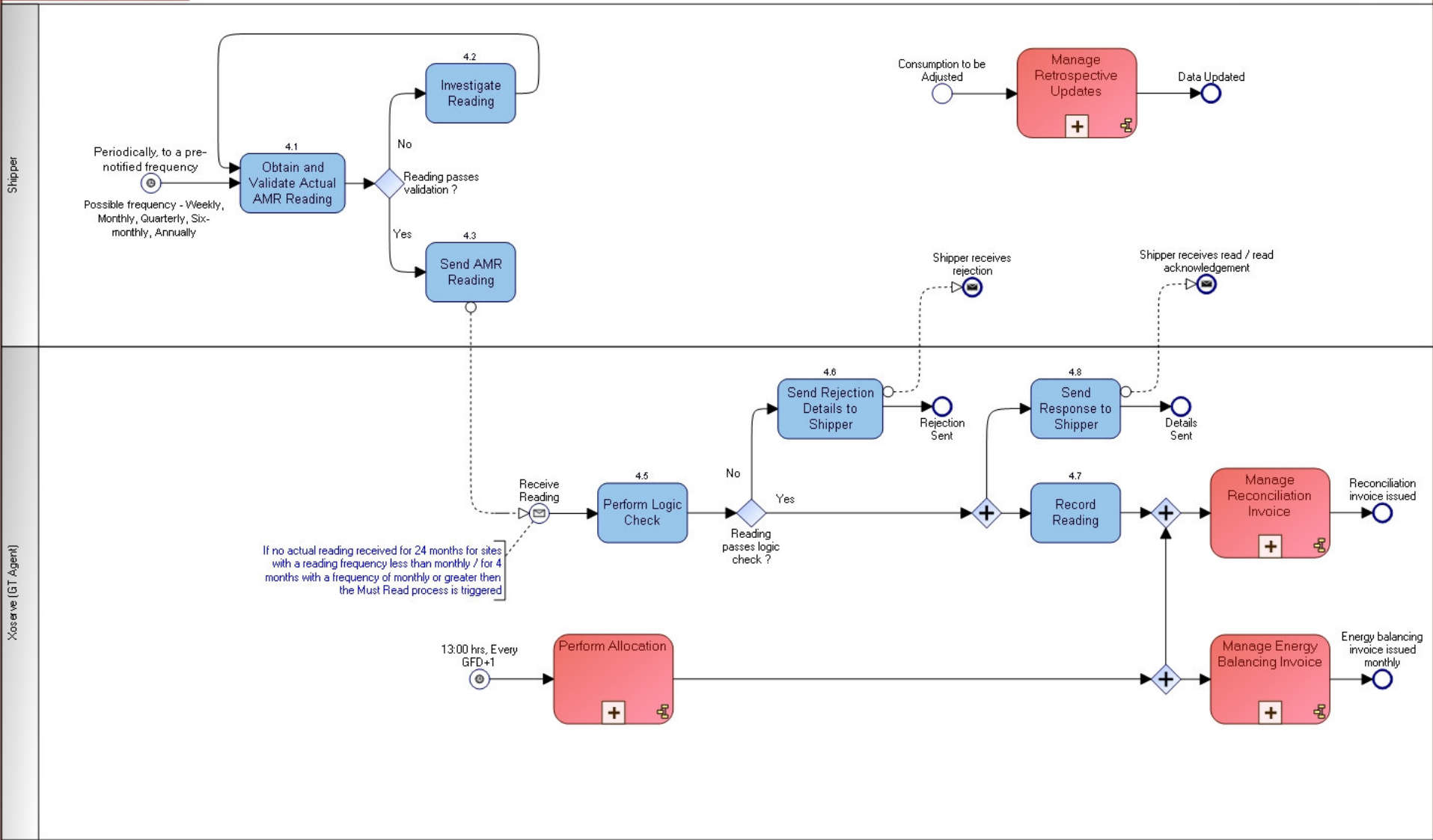


Version Control	
Owned by:	Xoserve (nos)
Version No:	0.7
Status:	Under Review
Date updated:	08/03/2011
Updated by:	Michael Payley

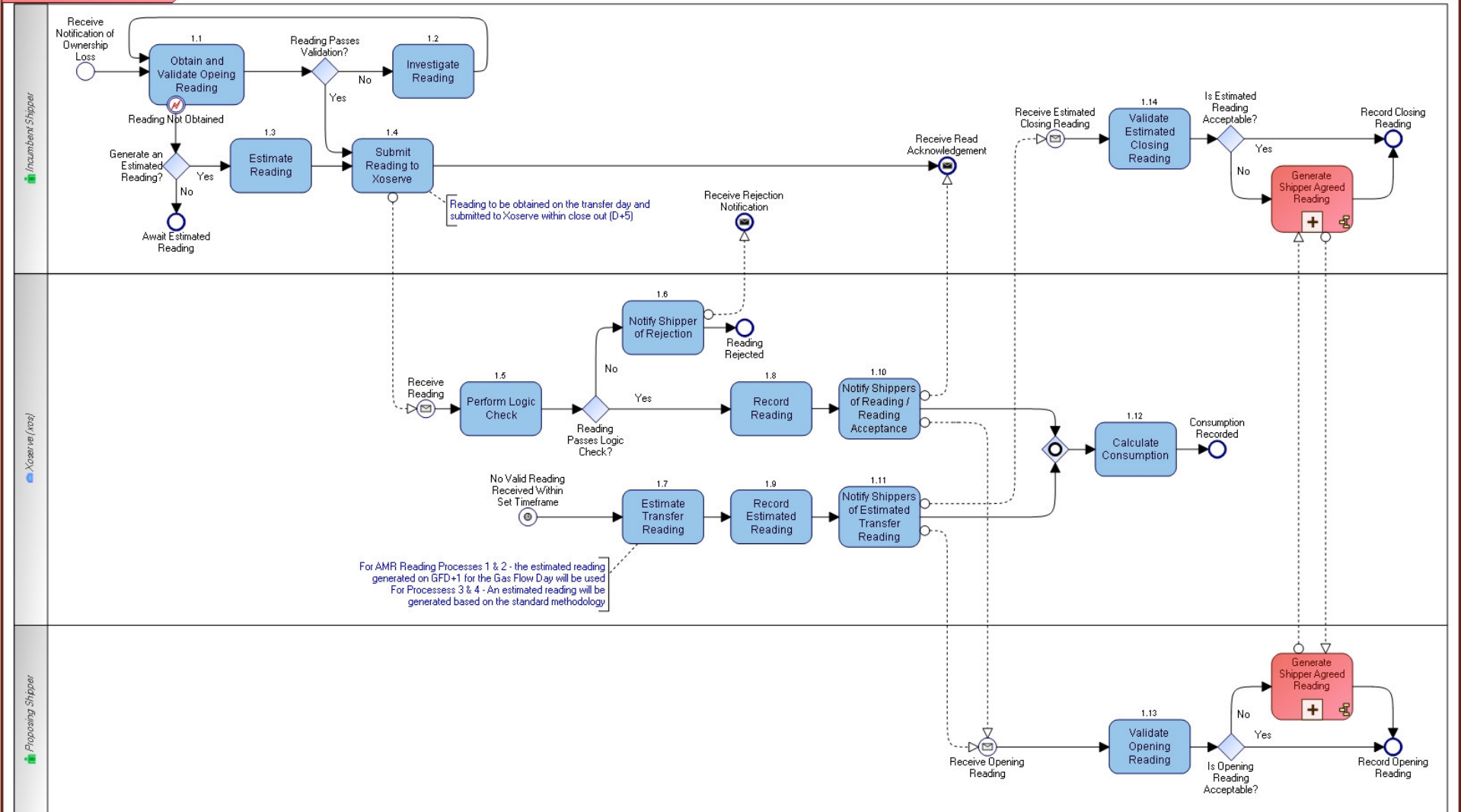




Version Control	
Owned by:	Xserve (Xos)
Version No:	0.7
Status:	Under Review
Date updated:	08/03/2011
Updated by:	Michael Payley

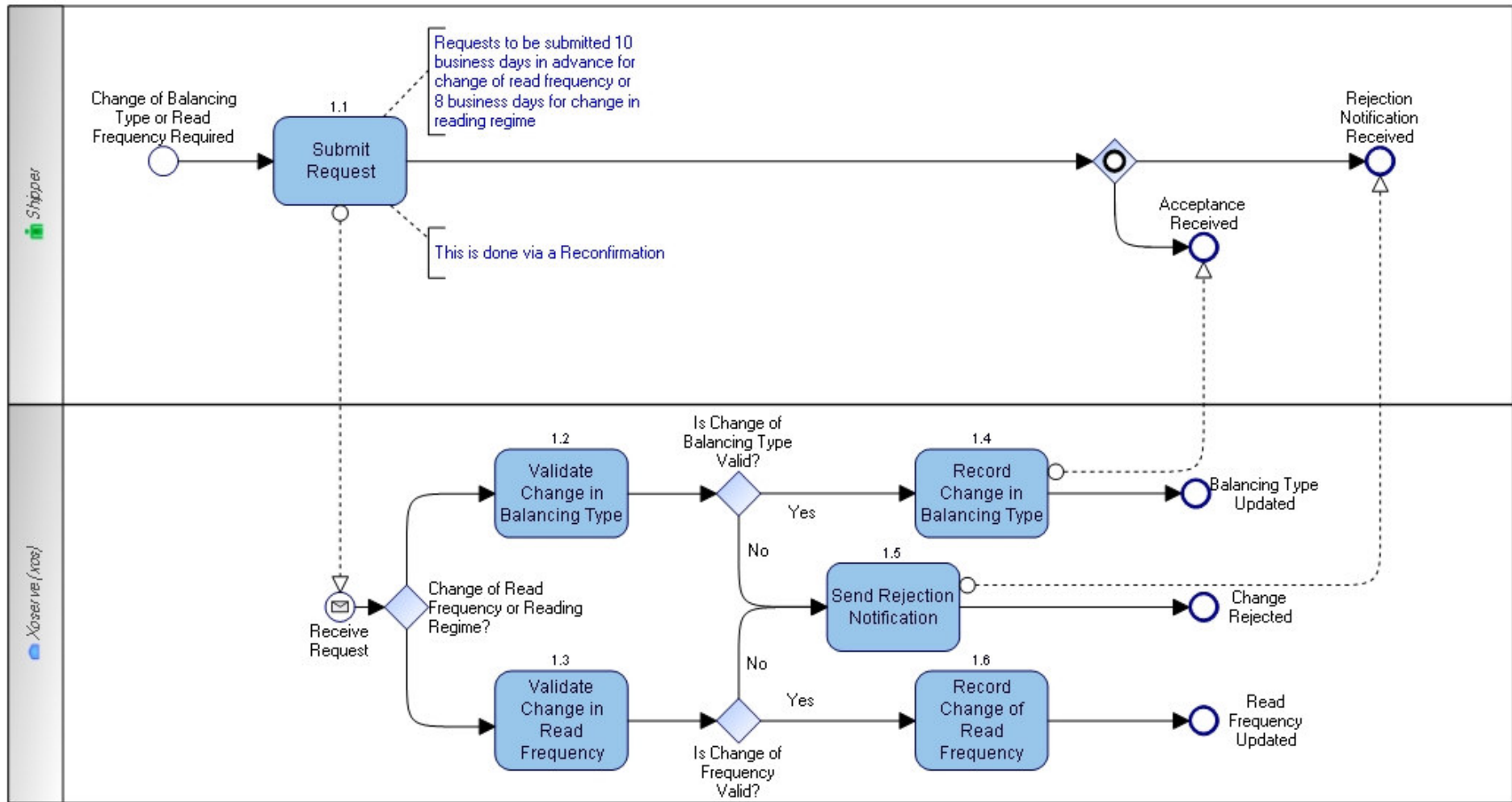


Version Control	
Owned by:	Xoserve (xos)
Version No:	0.7
Status:	Under Review
Date updated:	08/03/2011
Updated by:	Michael Payley



For AMR Reading Processes 1 & 2 - the estimated reading generated on GFD+1 for the Gas Flow Day will be used
 For Processes 3 & 4 - An estimated reading will be generated based on the standard methodology

Version Control	
Owned by:	Xoserve (xos)
Version No:	D.1
Status:	Draft
Date updated:	07/03/2011
Updated by:	Michael Payley



Version Control	
Owned by:	Xoserve (xos)
Version No:	0.1
Status:	Draft
Date updated:	08/03/2011
Updated by:	Michael Payley

This process only covers a change to the balancing type or read frequency where there is no change in Shipper