

xserve



respect > commitment > teamwork

Gemini

GRP  
2013

# Gemini Re-platforming Project External User Access To Gemini

August 2012

- The purpose of this presentation is to provide an overview and awareness to External Users of the arrangements for accessing Gemini through the new Citrix Web Interface when Gemini Re-platforming goes live:

The areas affected can be summarised as:

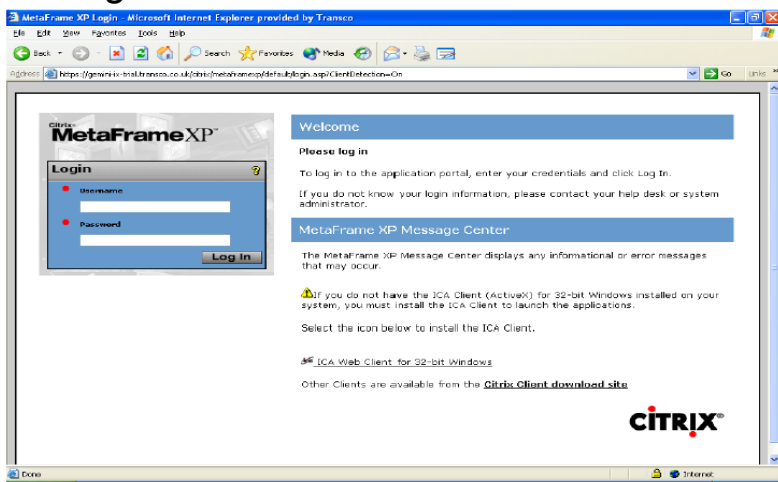
- Changes in appearance to the Citrix Logon and Citrix desktop screens
  - Citrix Password arrangements during the first logon
  - Installation of a compatible version Citrix client
- Following this overview, a guide providing further details will be made available at September's UKLC.
  - An update on External User Readiness Testing is also provided.



- An update to the software version of Citrix will result in changes to the appearance of the Citrix Logon screen and the Citrix desktop screen when Gemini Re-platforming goes live.

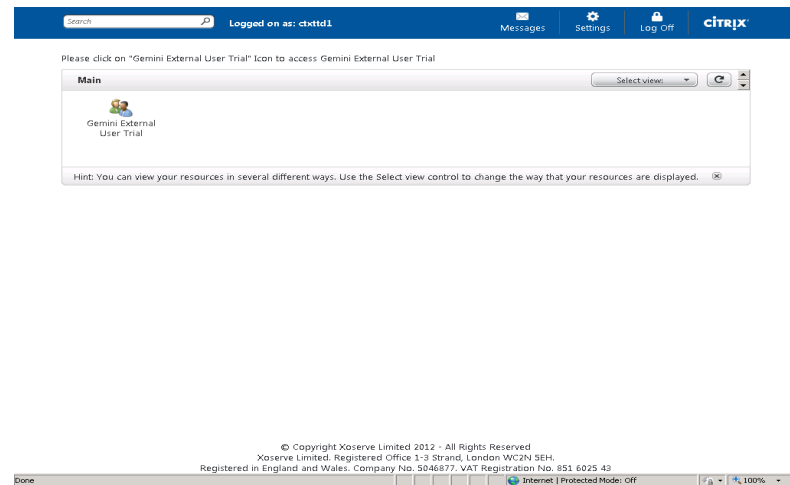
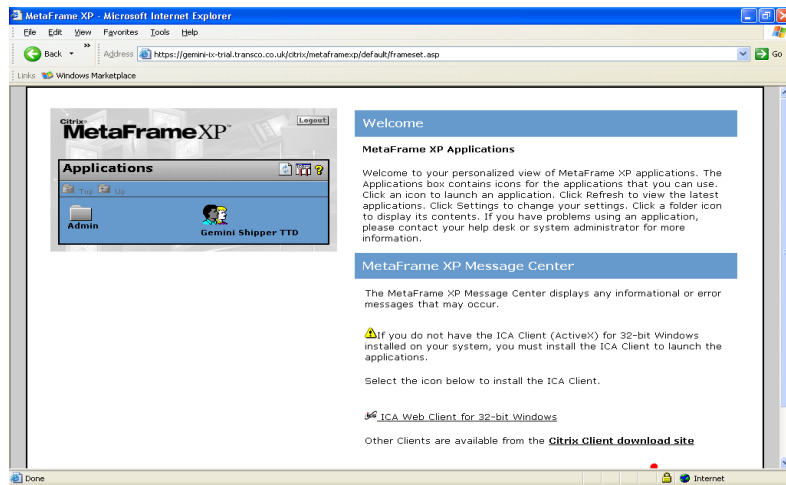
The new software version will make it easier for External Users to identify the environment that they are about to access and enable helpdesk and security information to be added.

The current Citrix Logon screen is shown on the left and the new Citrix Logon screen is on the right.



- Similarly, the appearance of the Citrix desktop screen has also changed.

The current Citrix desktop screen is shown on the left and the new Citrix desktop screen is on the right (for demonstration of the look and feel of the new screen only, icon names will vary).



- External User's accounts will be migrated to the Re-platformed Gemini to ensure that the same level of access is provided as at present.
- It isn't possible to migrate Citrix User passwords and therefore Xoserve will provide each User with a 'reset' password. Users will be prompted to change this password during their first logon to Citrix once go live occurs. They will then proceed as usual to the Gemini application screen; the Gemini screen and password will remain the same and users will login with their existing password for this screen. Further information will be provided as part of a detailed guide.



- GRP is using Citrix server version 'XenApp 6.5' and the implications of this to users are being understood. Analysis to date has demonstrated that Citrix Receiver Client 3.1 is compatible with XenApp 6.5 and a guide providing further details of this and what is needed to connect to the Re-platformed Gemini will be provided in September's UK Link Committee Pack.



- The uptake of External User Readiness Testing has been disappointing.

It is important that all External Users of Gemini can demonstrate that they are ready for Gemini Re-platforming go-live by participating in Readiness Testing.

- External Users who have registered are:
  - GMSL
  - RWE Supply and Trading
  - Better Energy Supply Limited
  - Gazprom Marketing and Trading Limited
  - Scottish Power Global Energy Management
  - International Power
  - Centrica
  - Dong Energy Sales
- **Users need to register their participation in Readiness Testing by contacting [GRPcommunications@xoserve.com](mailto:GRPcommunications@xoserve.com) by 1<sup>st</sup> September 2012.**



GRP will return to the UK Link Committee in September to provide an update on the implementation cut-over plan and to summarise any feedback we receive.

If you have queries, please contact Andy Earnshaw on 0121 623 2820 or Andrew Boyton on 0121 623 2363.



respect > commitment > teamwork