

ID	Task Name	Duration	Start	Baseline Finish	Finish	% Complete	Predecessors	Resource Names	18 Mar '13							25 Mar '13			
									M	T	W	T	F	S	S	M	T	W	T
1	Overall Performance Assurance Plan	727 days	Wed 20/03/13	Wed 31/12/14	Thu 31/12/15	28%													
2	Independent Study of Performance Risk	530 days	Wed 20/03/13	Wed 31/12/14	Tue 31/03/15	60%													
16	PAF Group to consider independent study and any reporting required from Xoserve/SPAA	197 days	Thu 01/05/14	Fri 20/06/14	Fri 30/01/15	0%		Ofgem											
18	PAF Group to consider reporting and agree materiality	156 days	Fri 27/06/14	Fri 27/06/14	Fri 30/01/15	0%		PAW											
19	PAF Group to consider ongoing data elements for PAF	293 days	Fri 14/02/14	Fri 14/02/14	Tue 31/03/15	0%		PAW											
20	1st cut of data elements for PAF and performance monitoring to be reviewed by the PAF Group	197 days	Mon 30/06/14	Mon 30/06/14	Tue 31/03/15	0%		PAW											
21	Performance Assurance Framework Development	407 days	Wed 25/09/13	Wed 01/10/14	Thu 16/04/15	30%													
22	Reporting	395 days	Wed 25/09/13	Mon 31/03/14	Tue 31/03/15	55%													
27	Determine individual elements and timings of reporting	336 days	Tue 17/12/13	Tue 31/12/13	Tue 31/03/15	10%		PAW											
29	Overall Governance Arrangements	362 days	Mon 11/11/13	Fri 13/06/14	Tue 31/03/15	16%													
31	Agree what current governance arrangements will be impacted by the PAF and if anything new will be required	294 days	Tue 17/12/13	Thu 15/05/14	Fri 30/01/15	0%		PAW											
32	Commence discussions with other governance bodies (if required)	336 days	Tue 17/12/13	Fri 28/02/14	Tue 31/03/15	0%		PAW											
35	Determine how funding, budget and apportionments are agreed	218 days	Wed 30/04/14	Wed 30/04/14	Fri 27/02/15	0%		PAW											
36	Discuss and agree split of duties/responsibilities between SPAA and the UNC	1 day	Fri 27/02/15	Wed 30/04/14	Fri 27/02/15	0%		PAW											
37	Agree how the PAFA features in the PAF and interfaces with the UNC and SPAA	218 days	Wed 30/04/14	Wed 30/04/14	Fri 27/02/15	0%		PAW											
40	Decide if there is any consultation needed with Parties/Ofgem following the determination of a settlement risk penalty	1 day	Mon 02/03/15	Wed 14/05/14	Mon 02/03/15	0%	37	PAW/Ofgem											
41	Determine individual elements and timings of incentive regime and invoicing (if deemed required under action 1)	1 day	Tue 03/03/15	Fri 13/06/14	Tue 03/03/15	0%	40	PAW											
42	Determine individual elements and timings of assurance (if deemed required under action 1)	1 day	Fri 27/02/15	Fri 13/06/14	Fri 27/02/15	0%	28	PAW											
47	Introducing the PAF	374 days	Mon 11/11/13	Wed 01/10/14	Thu 16/04/15	11%													
48	Develop business rules for PAF MOD	362 days	Mon 11/11/13	Fri 29/08/14	Tue 31/03/15	20%		PAW											
50	Consider two Mods for PAF and Policing / Administration	233 days	Wed 09/04/14	Wed 09/04/14	Fri 27/02/15	10%		PAW											
51	Raise two Mods for PAF and Policing / Administration	240 days	Wed 30/04/14	Wed 30/04/14	Tue 31/03/15	9%		PAW											
52	Mod panel meeting to discuss two Mods	241 days	Thu 15/05/14	Thu 15/05/14	Thu 16/04/15	0%		PAW											
53	Development of Mod 483	171 days	Tue 05/08/14	NA	Tue 31/03/15	80%													
54	Agree, in principle, the basis for the settlement risk premium	1 day	Wed 04/02/15	Wed 30/04/14	Wed 04/02/15	0%	16	PAW											
55	Agree frequency (at least initial frequency) of the analysis of settlement risk and how often methodology needs to be updated (if at all)	1 day	Tue 31/03/15	Wed 30/04/14	Tue 31/03/15	0%	16	PAW											
58	Performance Assurance Framework Administrator (PAFA)	563 days	Tue 05/11/13	Wed 31/12/14	Thu 31/12/15	16%													
60	Determine scope for the work on the PAF Administrator, based on model of assurance and performance requirements	336 days	Tue 17/12/13	Thu 31/07/14	Tue 31/03/15	25%		PAW											
61	Determine the scope of the PAFA performance reporting and analysis role	336 days	Tue 17/12/13	Thu 31/07/14	Tue 31/03/15	25%		PAW											
62	Consider if the PAFA will have an assurance role, as well as performance monitoring	336 days	Tue 17/12/13	Thu 31/07/14	Tue 31/03/15	25%		PAW											
63	Agree if the PAFA will provide "training services" for new entrants	336 days	Tue 17/12/13	Thu 31/07/14	Tue 31/03/15	25%		PAW											
64	Agree if the PAFA will provide "education" to parties performing poorly	336 days	Tue 17/12/13	Thu 31/07/14	Tue 31/03/15	25%		PAW											
65	Consider options for the contracting of the PAF administrator	311 days	Tue 21/01/14	Fri 29/08/14	Tue 31/03/15	25%		PAW											
66	Should the PAFA have a statutory role?	366 days	Tue 05/11/13	Fri 29/08/14	Tue 31/03/15	25%		PAW											
67	Who should contract the PAFA (a) initially and (b) ongoing?	311 days	Tue 21/01/14	Fri 29/08/14	Tue 31/03/15	25%		PAW											
68	Determine route to agree appointment, tender and award of PAFA	311 days	Tue 21/01/14	Fri 29/08/14	Tue 31/03/15	25%		PAW											
69	Identify possible service providers for PAFA	195 days	Fri 01/08/14	Fri 29/08/14	Thu 30/04/15	0%		PAW											
70	Prepare tender for PAFA appointment	174 days	Mon 01/09/14	Mon 29/09/14	Thu 30/04/15	0%		PAW											
71	Issue tender for the provision of PAFA	1 day	Thu 30/04/15	Tue 30/09/14	Thu 30/04/15	0%		TBC											
72	Undertake tender evaluation (including mtgs with tenderers)	173 days	Wed 01/10/14	Fri 31/10/14	Fri 29/05/15	0%		TBC											
73	Agree successful party who will do the PAFA work	1 day	Mon 15/06/15	Fri 14/11/14	Mon 15/06/15	0%		PAW											
74	Contract party for PAFA work	11 days	Tue 16/06/15	Fri 28/11/14	Tue 30/06/15	0%	15	TBC											
75	PAFA commences work - preparation (including meeting industry parties)	163 days	Mon 01/12/14	Wed 31/12/14	Wed 15/07/15	0%		TBC											
76	PAFA takes model from the independent study and supporting documentation and becomes familiar with it	175 days	Mon 01/12/14	Wed 31/12/14	Fri 31/07/15	0%		TBC											
77	PAFA establishes links with Xoserve (and possibly SPAA) to gain data necessary to run risk model	186 days	Mon 01/12/14	Wed 31/12/14	Mon 17/08/15	0%		TBC											
78	PAFA creates reporting on the agreed parameters deemed most material for settlement accuracy	196 days	Mon 01/12/14	Wed 31/12/14	Mon 31/08/15	0%		TBC											
79	PAFA issues reports to industry and Ofgem on a monthly basis to update on progress	218 days	Mon 01/12/14	Wed 31/12/14	Wed 30/09/15	0%		TBC											
80	PAFA liaises with Xoserve on monthly charges and re-distribution to be applied	66 days	Thu 01/10/15	Wed 31/12/14	Thu 31/12/15	0%		TBC											
81	PAFA issues first performance reports against Risk Register	218 days	Mon 01/12/14	Wed 31/12/14	Wed 30/09/15	0%		TBC											
82	MOD483 - Performance Assurance Incentive Regime	114 days	Fri 25/07/14	Wed 31/12/14	Wed 31/12/14	25%													
83	Day to Day Governance Arrangements	114 days	Fri 25/07/14	Wed 31/12/14	Wed 31/12/14	25%													
84	Determine the need for an "oversight" workgroup/committee and, if necessary, its remit, frequency of meetings and if it	114 days	Fri 25/07/14	Wed 31/12/14	Wed 31/12/14	25%		PAW											
85	MOD506 - gas Performance Assurance and Governance	26 days	Fri 25/07/14	Fri 29/08/14	Fri 29/08/14	5%													

Project: Performance Assurance Plan Date: Wed 07/01/15	Task		Project Summary		Inactive Milestone		Manual Summary Rollup		Progress	
	Split		External Tasks		Inactive Summary		Manual Summary		Deadline	
	Milestone		External Milestone		Manual Task		Start-only			
	Summary		Inactive Task		Duration-only		Finish-only			

ID	Task Name	Duration	Start	Baseline Finish	Finish	% Complete	Predecessors	Resource Names	18 Mar '13							25 Mar '13			
									M	T	W	T	F	S	S	M	T	W	T
88	Performance Assurance Framework Administrator (PAFA)	81 days	Fri 25/07/14	Fri 29/08/14	Fri 14/11/14	3%													
89	Consider Elexon Tools	136 days	Fri 25/07/14	Fri 29/08/14	Fri 30/01/15	25%		PAW											
90	Determine scope for the work on the PAF Administrator, based on model of assurance and performance requirements	178 days	Fri 25/07/14	Fri 29/08/14	Tue 31/03/15	0%		PAW											
91	Determine the scope of the PAFA performance reporting and analysis role	178 days	Fri 25/07/14	Fri 29/08/14	Tue 31/03/15	0%		PAW											
92	Consider if the PAFA will have an assurance role, as well as performance monitoring	178 days	Fri 25/07/14	Fri 29/08/14	Tue 31/03/15	0%		PAW											
93	Agree if the PAFA will provide "training services" for new entrants	178 days	Fri 25/07/14	Fri 29/08/14	Tue 31/03/15	0%		PAW											
94	Agree if the PAFA will provide "education" to parties performing poorly	178 days	Fri 25/07/14	Fri 29/08/14	Tue 31/03/15	0%		PAW											
95	Consider options for the contracting of the PAF administrator	178 days	Fri 25/07/14	Fri 29/08/14	Tue 31/03/15	0%		PAW											
96	MOD 520 - Performance Assurance Reporting	114 days	Fri 25/07/14	NA	Wed 31/12/14	0%													
97	Agree governance around reporting - how to request new reports	114 days	Fri 25/07/14	Wed 31/12/14	Wed 31/12/14	0%		PAW											

Project: Performance Assurance Plan
Date: Wed 07/01/15

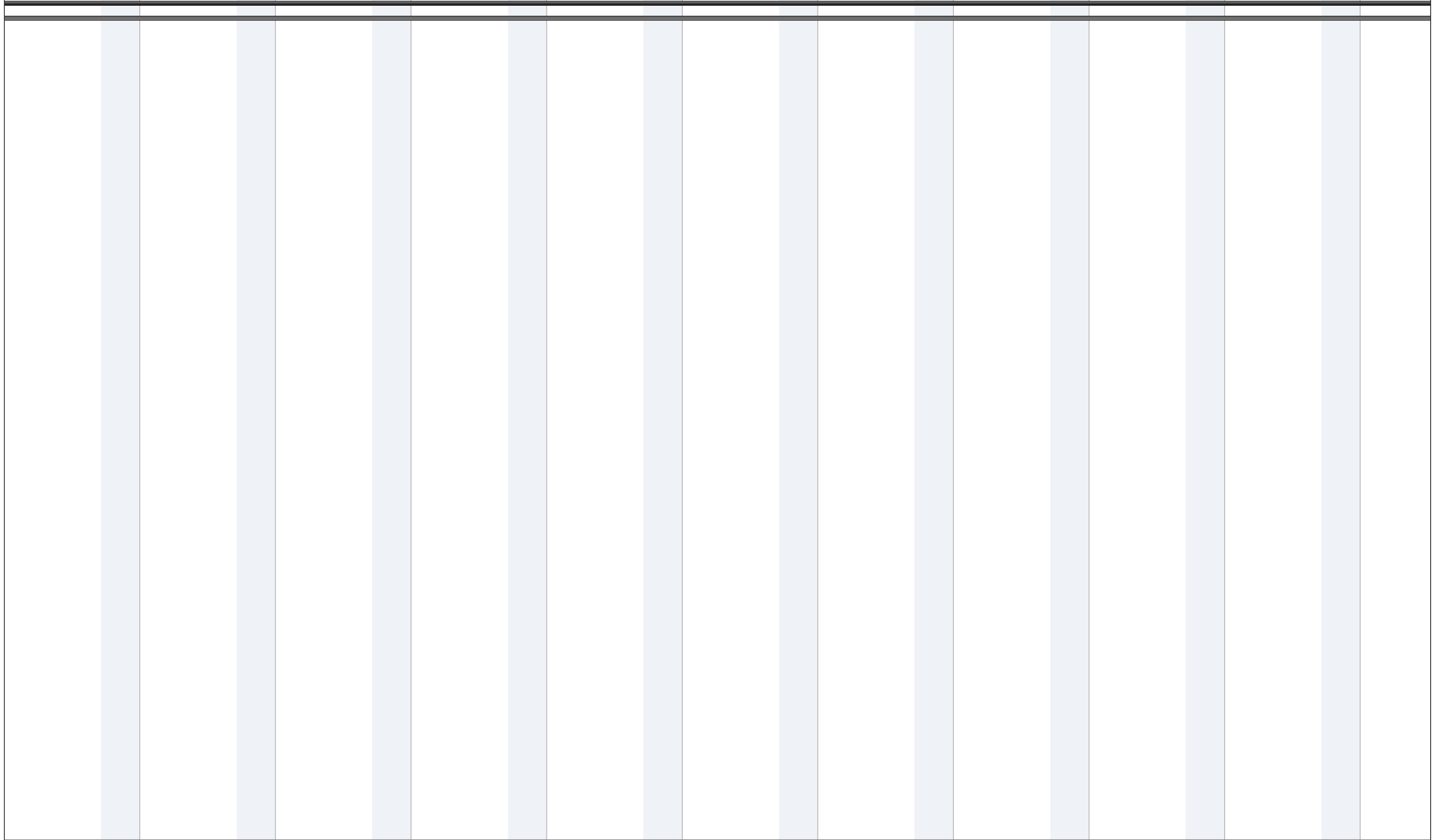
Task		Project Summary		Inactive Milestone		Manual Summary Rollup		Progress	
Split		External Tasks		Inactive Summary		Manual Summary		Deadline	
Milestone		External Milestone		Manual Task		Start-only			
Summary		Inactive Task		Duration-only		Finish-only			



Project: Performance Assurance Plan
Date: Wed 07/01/15

Task		Project Summary		Inactive Milestone		Manual Summary Rollup		Progress	
Split		External Tasks		Inactive Summary		Manual Summary		Deadline	
Milestone		External Milestone		Manual Task		Start-only			
Summary		Inactive Task		Duration-only		Finish-only			

10 Jun '13	17 Jun '13	24 Jun '13	01 Jul '13	08 Jul '13	15 Jul '13	22 Jul '13	29 Jul '13	05 Aug '13	12 Aug '13	19 Aug '13
M T W T F S S	M T W T F S S	M T W T F S S	M T W T F S S	M T W T F S S	M T W T F S S	M T W T F S S	M T W T F S S	M T W T F S S	M T W T F S S	M T W T F S S



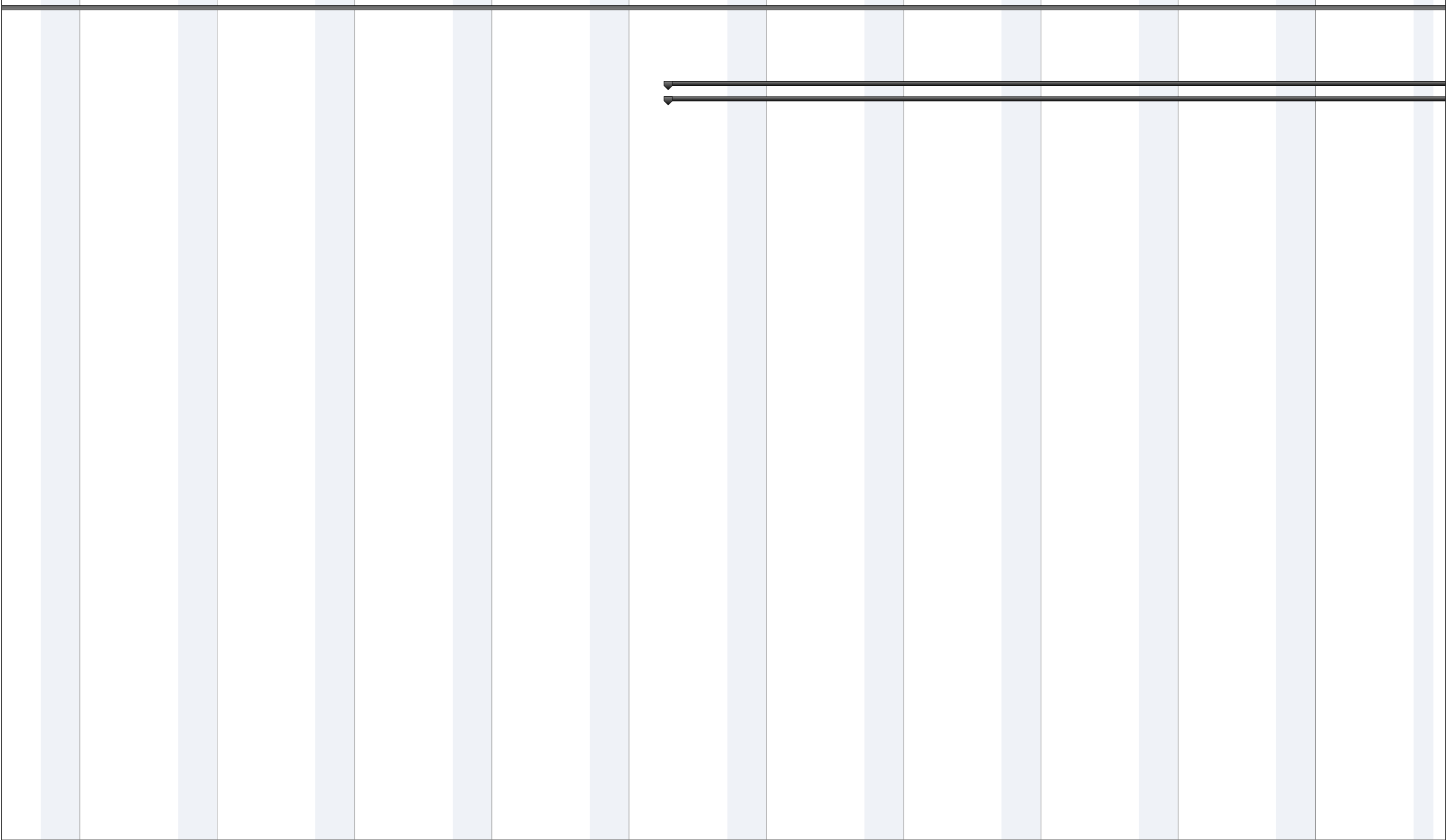
Project: Performance Assurance Plan Date: Wed 07/01/15	Task		Project Summary		Inactive Milestone		Manual Summary Rollup		Progress	
	Split		External Tasks		Inactive Summary		Manual Summary		Deadline	
	Milestone		External Milestone		Manual Task		Start-only			
	Summary		Inactive Task		Duration-only		Finish-only			

10 Jun '13					17 Jun '13					24 Jun '13					01 Jul '13					08 Jul '13					15 Jul '13					22 Jul '13					29 Jul '13					05 Aug '13					12 Aug '13					19 Aug '13																																	
M	T	W	T	F	S	S	M	T	W	T	F	S	S	M	T	W	T	F	S	S	M	T	W	T	F	S	S	M	T	W	T	F	S	S	M	T	W	T	F	S	S	M	T	W	T	F	S	S	M	T	W	T	F	S	S	M	T	W	T	F	S	S	M	T	W	T	F	S	S														



Project: Performance Assurance Plan Date: Wed 07/01/15	Task		Project Summary		Inactive Milestone		Manual Summary Rollup		Progress	
	Split		External Tasks		Inactive Summary		Manual Summary		Deadline	
	Milestone		External Milestone		Manual Task		Start-only			
	Summary		Inactive Task		Duration-only		Finish-only			

26 Aug '13				02 Sep '13				09 Sep '13				16 Sep '13				23 Sep '13				30 Sep '13				07 Oct '13				14 Oct '13				21 Oct '13				28 Oct '13																							
T	F	S	S	M	T	W	T	F	S	S	M	T	W	T	F	S	S	M	T	W	T	F	S	S	M	T	W	T	F	S	S	M	T	W	T	F	S	S	M	T	W	T	F	S	S	M	T	W	T	F	S	S	M	T	W	T	F	S	S



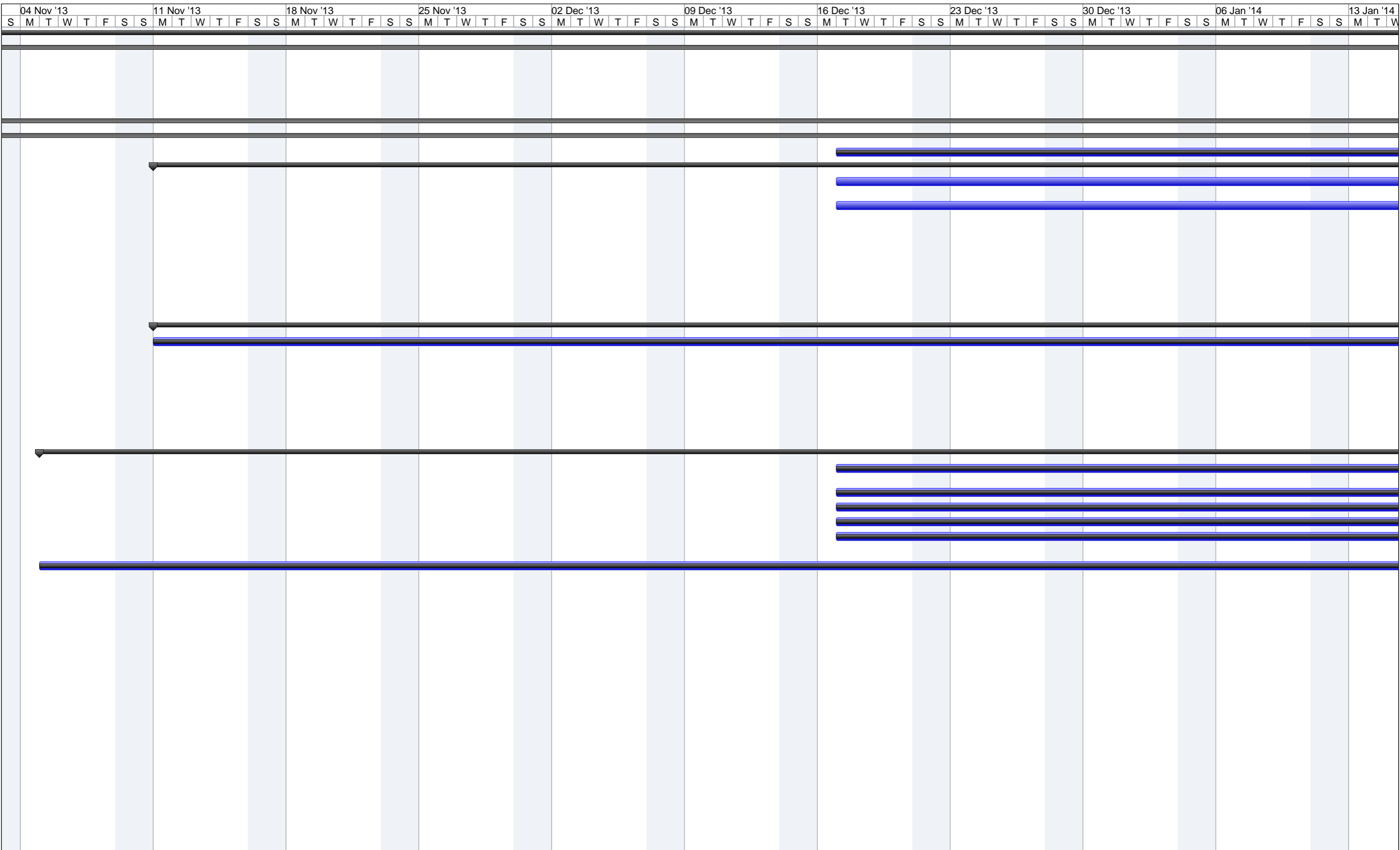
Project: Performance Assurance Plan
Date: Wed 07/01/15

Task		Project Summary		Inactive Milestone		Manual Summary Rollup		Progress	
Split		External Tasks		Inactive Summary		Manual Summary		Deadline	
Milestone		External Milestone		Manual Task		Start-only			
Summary		Inactive Task		Duration-only		Finish-only			

26 Aug '13				02 Sep '13				09 Sep '13				16 Sep '13				23 Sep '13				30 Sep '13				07 Oct '13				14 Oct '13				21 Oct '13				28 Oct '13																											
T	F	S	S	M	T	W	T	F	S	S	M	T	W	T	F	S	S	M	T	W	T	F	S	S	M	T	W	T	F	S	S	M	T	W	T	F	S	S	M	T	W	T	F	S	S	M	T	W	T	F	S	S											



Project: Performance Assurance Plan Date: Wed 07/01/15	Task		Project Summary		Inactive Milestone		Manual Summary Rollup		Progress	
	Split		External Tasks		Inactive Summary		Manual Summary		Deadline	
	Milestone		External Milestone		Manual Task		Start-only			
	Summary		Inactive Task		Duration-only		Finish-only			



Project: Performance Assurance Plan
Date: Wed 07/01/15

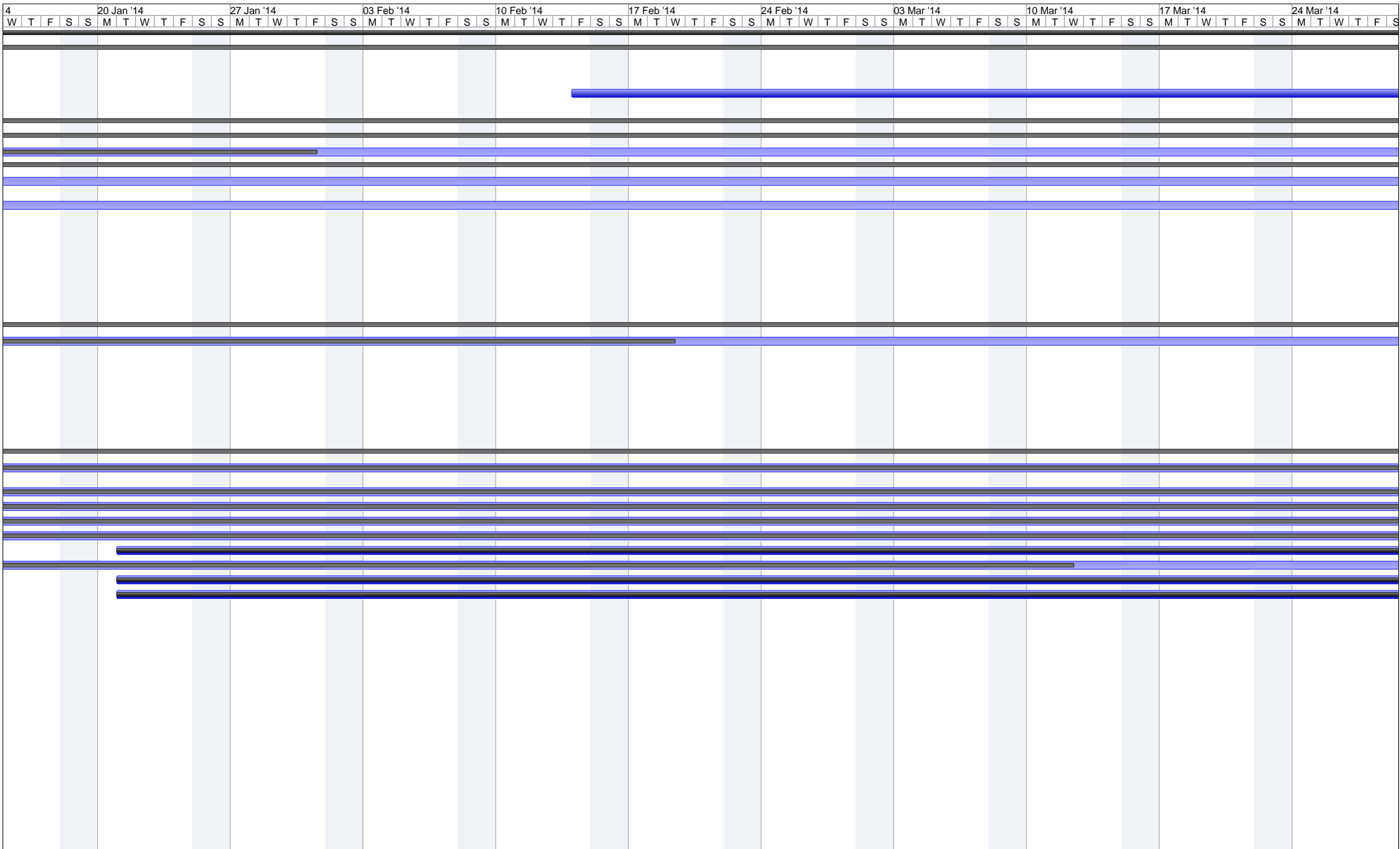
Task		Project Summary		Inactive Milestone		Manual Summary Rollup		Progress	
Split		External Tasks		Inactive Summary		Manual Summary		Deadline	
Milestone		External Milestone		Manual Task		Start-only			
Summary		Inactive Task		Duration-only		Finish-only			

04 Nov '13							11 Nov '13							18 Nov '13							25 Nov '13							02 Dec '13							09 Dec '13							16 Dec '13							23 Dec '13							30 Dec '13							06 Jan '14							13 Jan '14																												
S	M	T	W	T	F	S	S	M	T	W	T	F	S	S	M	T	W	T	F	S	S	M	T	W	T	F	S	S	M	T	W	T	F	S	S	M	T	W	T	F	S	S	M	T	W	T	F	S	S	M	T	W	T	F	S	S	M	T	W	T	F	S	S	M	T	W	T	F	S	S	M	T	W	T	F	S	S	M	T	W	T	F	S	S														



Project: Performance Assurance Plan
Date: Wed 07/01/15

Task		Project Summary		Inactive Milestone		Manual Summary Rollup		Progress	
Split		External Tasks		Inactive Summary		Manual Summary		Deadline	
Milestone		External Milestone		Manual Task		Start-only			
Summary		Inactive Task		Duration-only		Finish-only			



Project: Performance Assurance Plan
Date: Wed 07/01/15

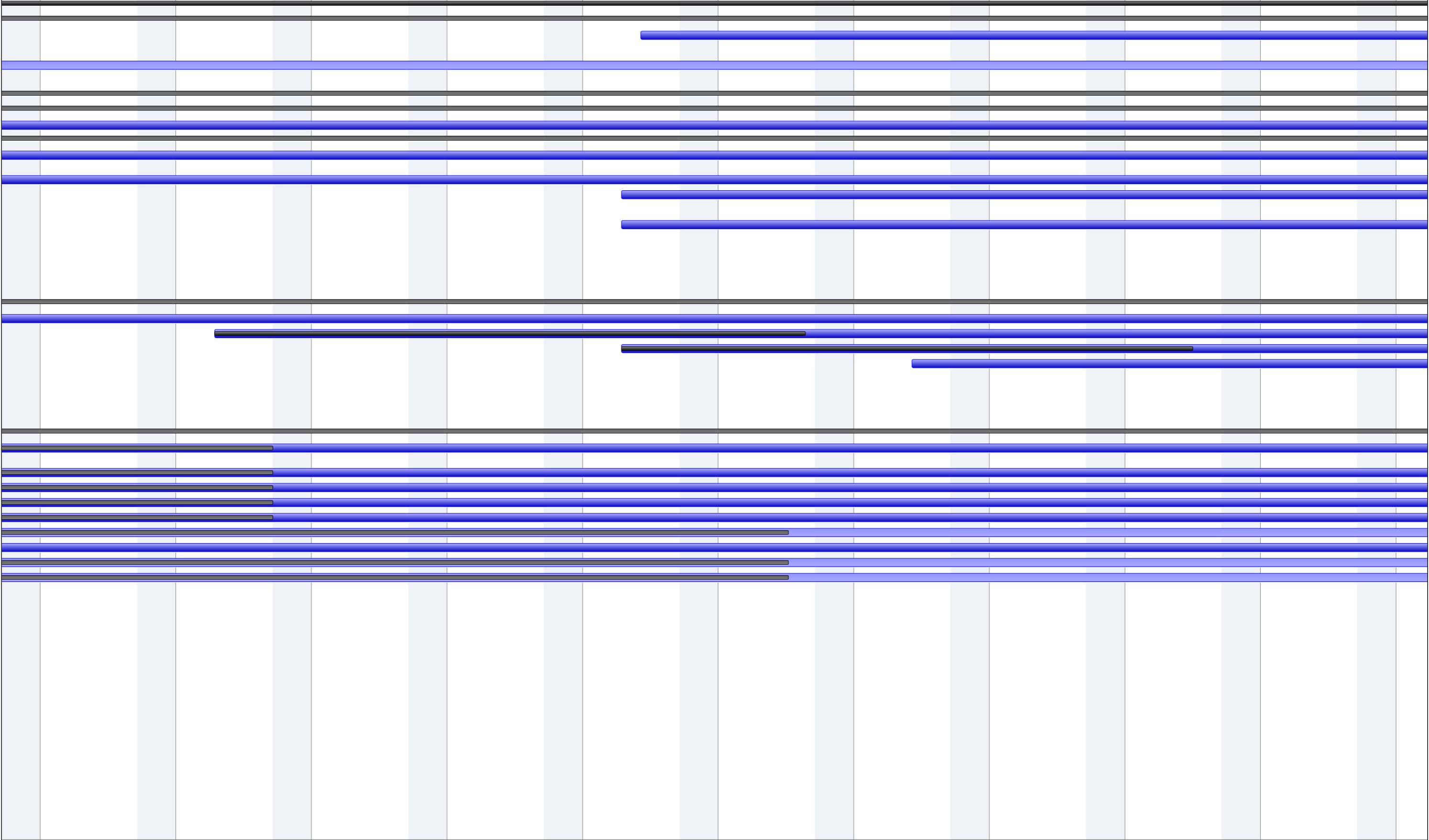
Task		Project Summary		Inactive Milestone		Manual Summary Rollup		Progress	
Split		External Tasks		Inactive Summary		Manual Summary		Deadline	
Milestone		External Milestone		Manual Task		Start-only			
Summary		Inactive Task		Duration-only		Finish-only			

4	20 Jan '14					27 Jan '14					03 Feb '14					10 Feb '14					17 Feb '14					24 Feb '14					03 Mar '14					10 Mar '14					17 Mar '14					24 Mar '14																												
W	T	F	S	S	M	T	W	T	F	S	S	M	T	W	T	F	S	S	M	T	W	T	F	S	S	M	T	W	T	F	S	S	M	T	W	T	F	S	S	M	T	W	T	F	S	S	M	T	W	T	F	S	S	M	T	W	T	F	S	S	M	T	W	T	F	S	S	M	T	W	T	F	S	S



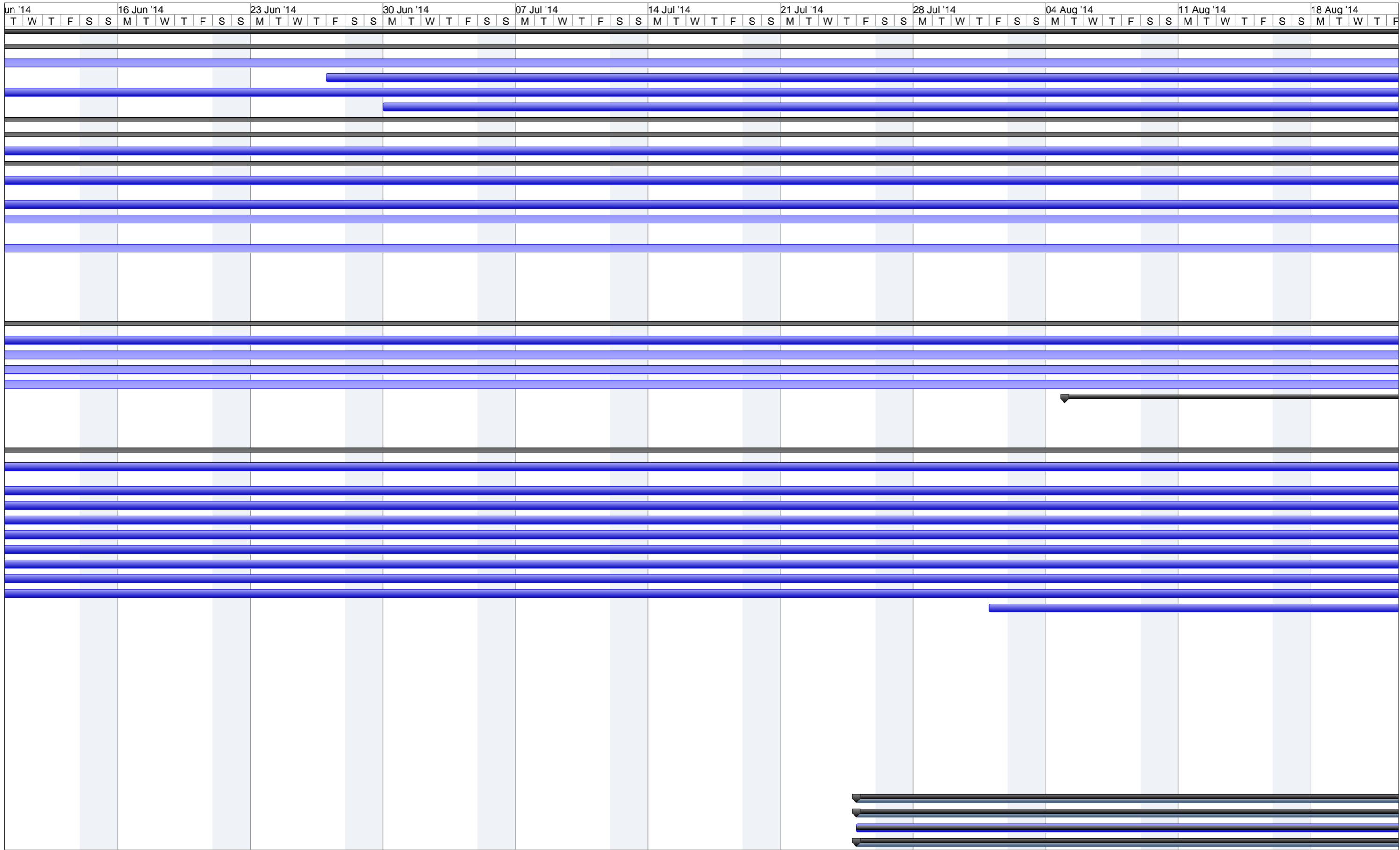
Project: Performance Assurance Plan Date: Wed 07/01/15	Task		Project Summary		Inactive Milestone		Manual Summary Rollup		Progress	
	Split		External Tasks		Inactive Summary		Manual Summary		Deadline	
	Milestone		External Milestone		Manual Task		Start-only			
	Summary		Inactive Task		Duration-only		Finish-only			

31 Mar '14 07 Apr '14 14 Apr '14 21 Apr '14 28 Apr '14 05 May '14 12 May '14 19 May '14 26 May '14 02 Jun '14 09 Jun



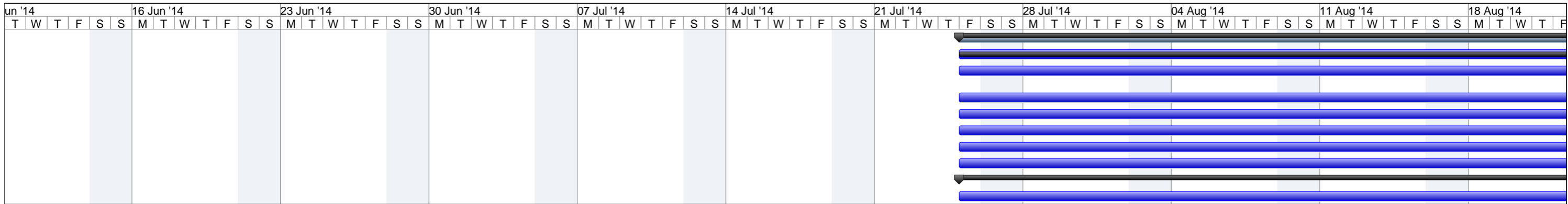
Project: Performance Assurance Plan
Date: Wed 07/01/15

Task		Project Summary		Inactive Milestone		Manual Summary Rollup		Progress	
Split		External Tasks		Inactive Summary		Manual Summary		Deadline	
Milestone		External Milestone		Manual Task		Start-only			
Summary		Inactive Task		Duration-only		Finish-only			



Project: Performance Assurance Plan
 Date: Wed 07/01/15

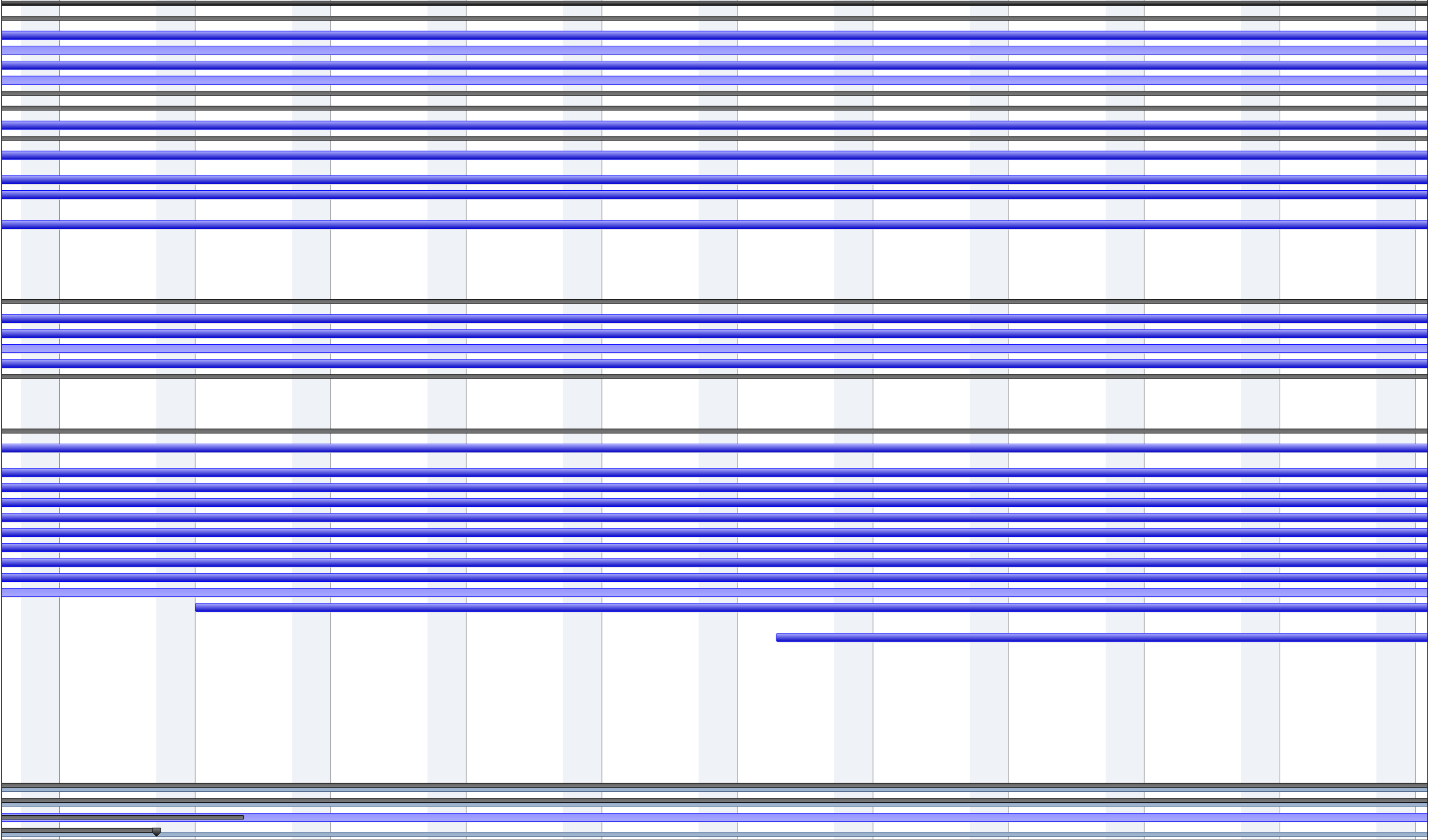
Task		Project Summary		Inactive Milestone		Manual Summary Rollup		Progress	
Split		External Tasks		Inactive Summary		Manual Summary		Deadline	
Milestone		External Milestone		Manual Task		Start-only			
Summary		Inactive Task		Duration-only		Finish-only			



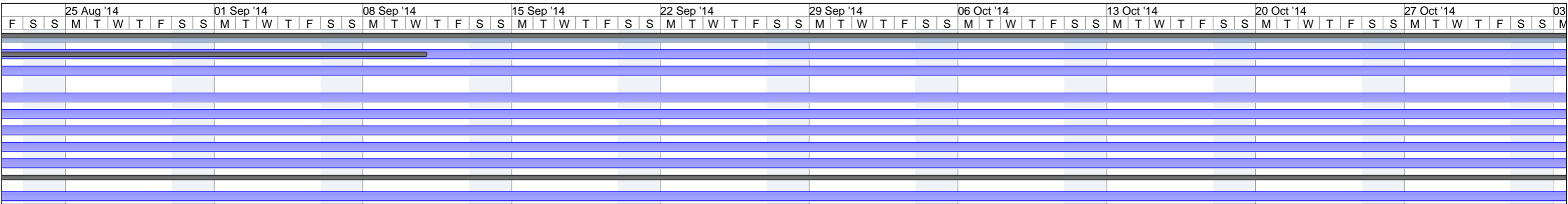
Project: Performance Assurance Plan
Date: Wed 07/01/15

Task		Project Summary		Inactive Milestone		Manual Summary Rollup		Progress	
Split		External Tasks		Inactive Summary		Manual Summary		Deadline	
Milestone		External Milestone		Manual Task		Start-only			
Summary		Inactive Task		Duration-only		Finish-only			

25 Aug '14 01 Sep '14 08 Sep '14 15 Sep '14 22 Sep '14 29 Sep '14 06 Oct '14 13 Oct '14 20 Oct '14 27 Oct '14 03



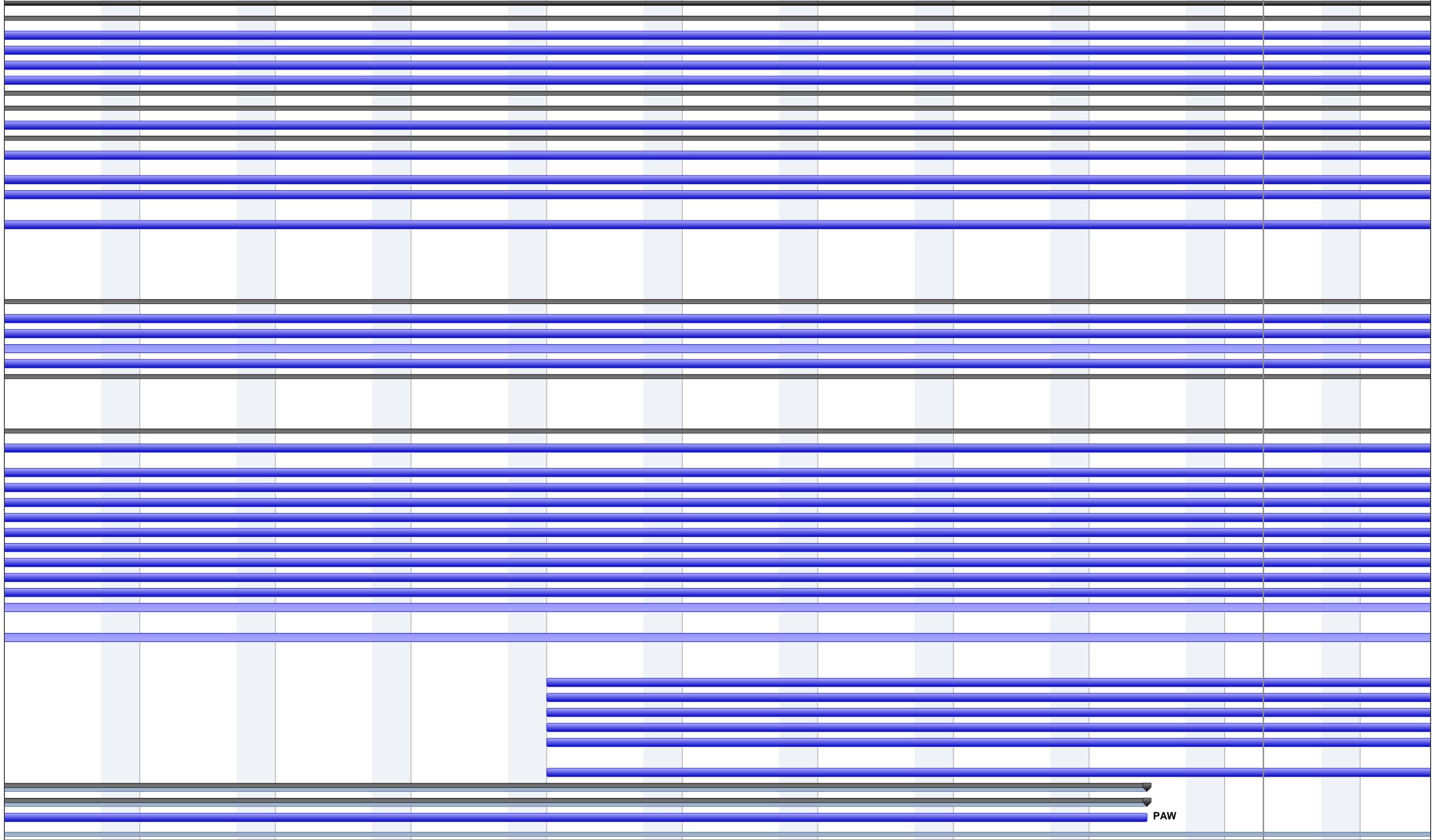
Project: Performance Assurance Plan Date: Wed 07/01/15	Task		Project Summary		Inactive Milestone		Manual Summary Rollup		Progress	
	Split		External Tasks		Inactive Summary		Manual Summary		Deadline	
	Milestone		External Milestone		Manual Task		Start-only			
	Summary		Inactive Task		Duration-only		Finish-only			



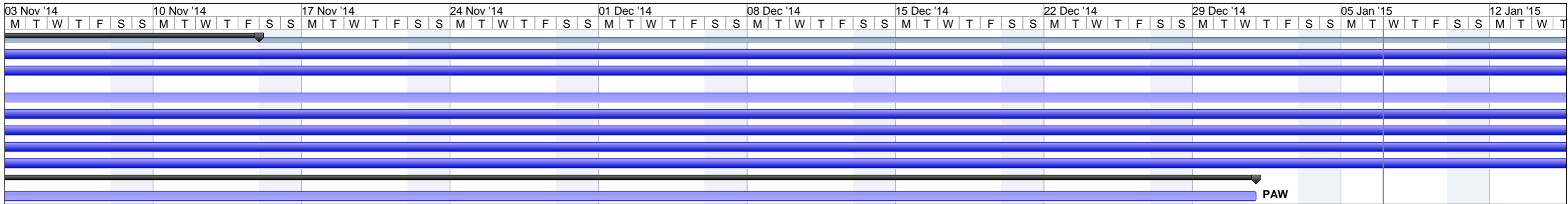
Project: Performance Assurance Plan
Date: Wed 07/01/15

Task		Project Summary		Inactive Milestone		Manual Summary Rollup		Progress	
Split		External Tasks		Inactive Summary		Manual Summary		Deadline	
Milestone		External Milestone		Manual Task		Start-only			
Summary		Inactive Task		Duration-only		Finish-only			

03 Nov '14 10 Nov '14 17 Nov '14 24 Nov '14 01 Dec '14 08 Dec '14 15 Dec '14 22 Dec '14 29 Dec '14 05 Jan '15 12 Jan '15
M T W T F S S M T W T F S S M T W T F S S M T W T F S S M T W T F S S M T W T F S S M T W T F S S M T W T F S S

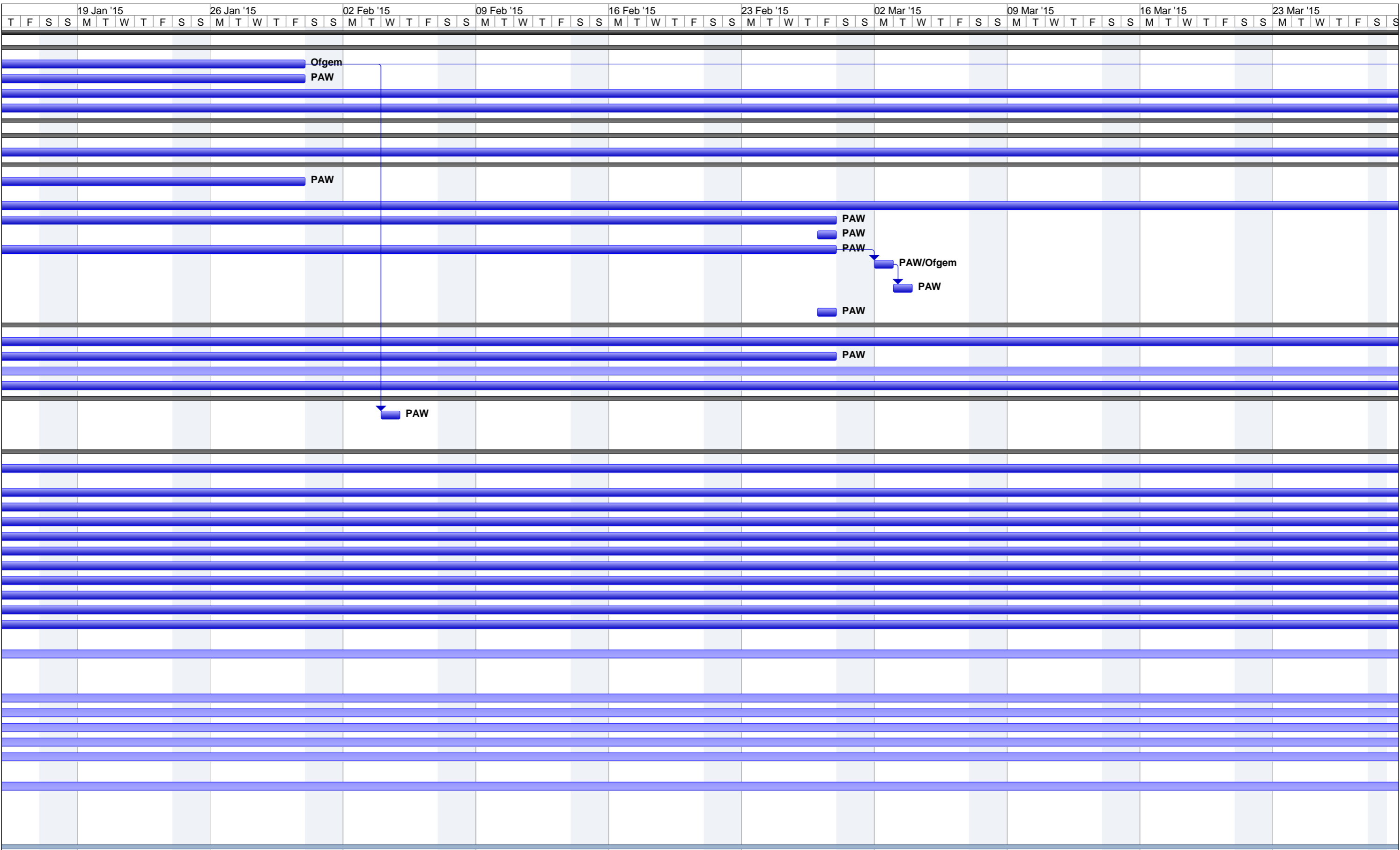


Project: Performance Assurance Plan Date: Wed 07/01/15	Task		Project Summary		Inactive Milestone		Manual Summary Rollup		Progress	
	Split		External Tasks		Inactive Summary		Manual Summary		Deadline	
	Milestone		External Milestone		Manual Task		Start-only			
	Summary		Inactive Task		Duration-only		Finish-only			

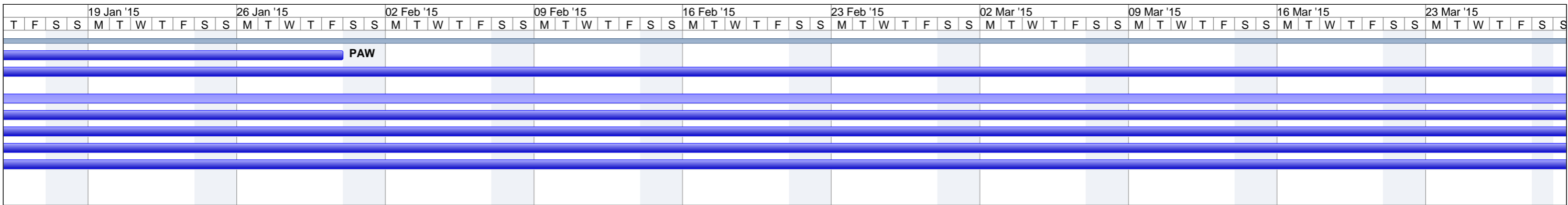


Project: Performance Assurance Plan
Date: Wed 07/01/15

Task		Project Summary		Inactive Milestone		Manual Summary Rollup		Progress	
Split		External Tasks		Inactive Summary		Manual Summary		Deadline	
Milestone		External Milestone		Manual Task		Start-only			
Summary		Inactive Task		Duration-only		Finish-only			



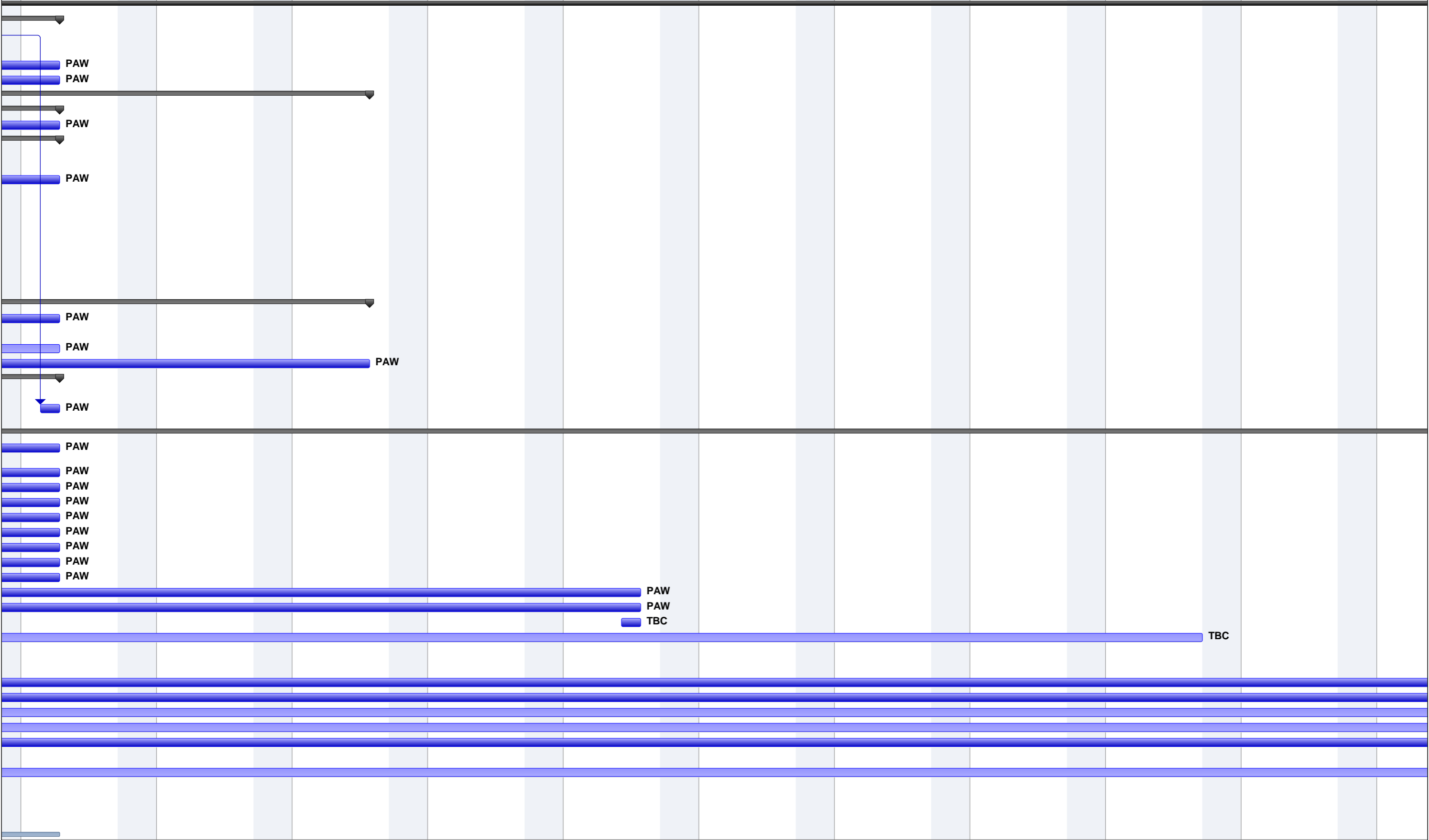
Project: Performance Assurance Plan
 Date: Wed 07/01/15



Project: Performance Assurance Plan
Date: Wed 07/01/15

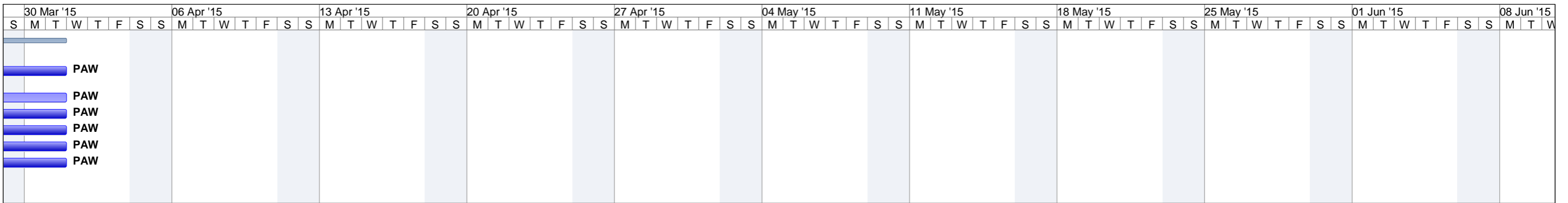
Task		Project Summary		Inactive Milestone		Manual Summary Rollup		Progress	
Split		External Tasks		Inactive Summary		Manual Summary		Deadline	
Milestone		External Milestone		Manual Task		Start-only			
Summary		Inactive Task		Duration-only		Finish-only			

30 Mar '15 06 Apr '15 13 Apr '15 20 Apr '15 27 Apr '15 04 May '15 11 May '15 18 May '15 25 May '15 01 Jun '15 08 Jun '15



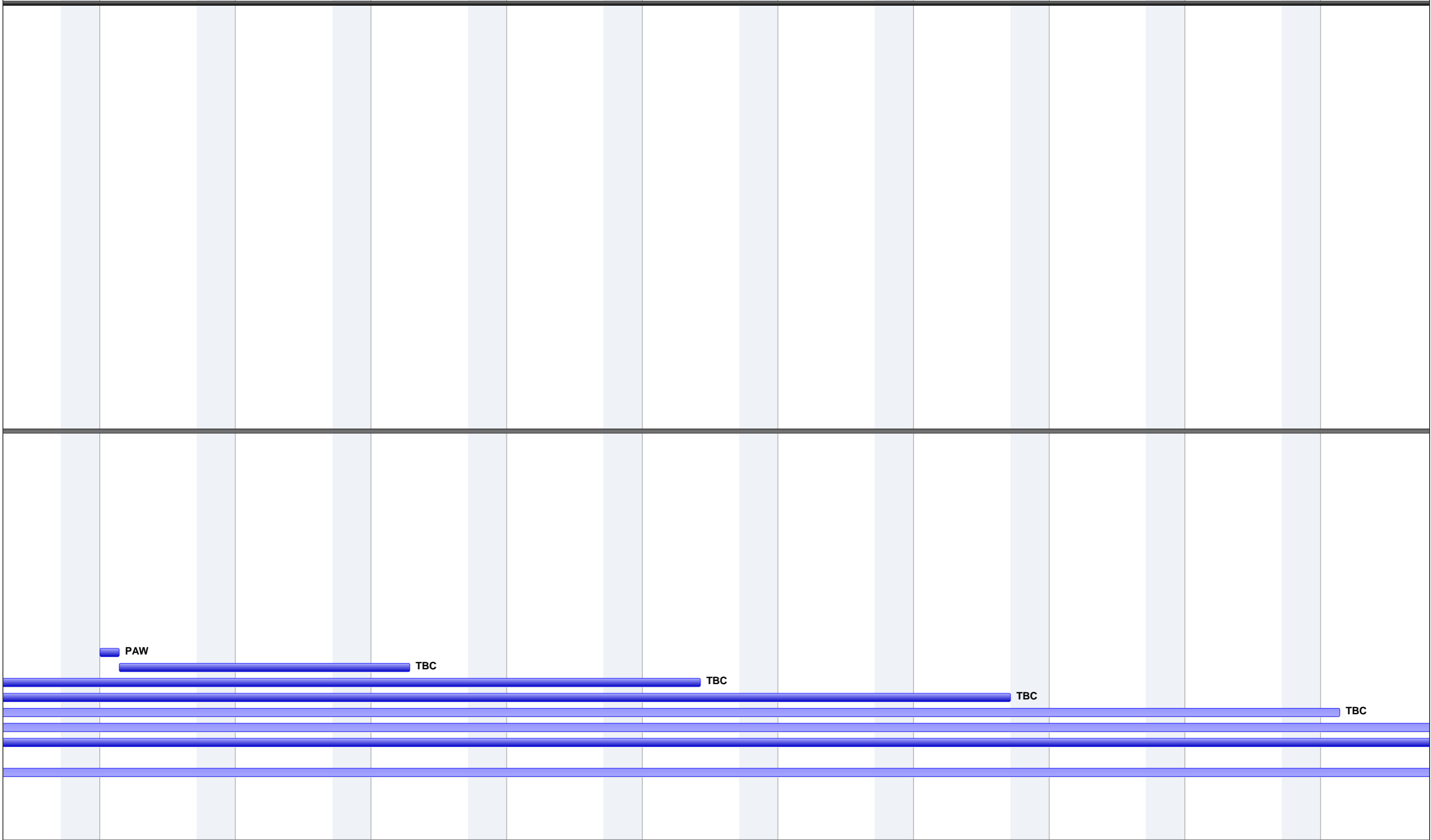
Project: Performance Assurance Plan
Date: Wed 07/01/15

Task		Project Summary		Inactive Milestone		Manual Summary Rollup		Progress	
Split		External Tasks		Inactive Summary		Manual Summary		Deadline	
Milestone		External Milestone		Manual Task		Start-only			
Summary		Inactive Task		Duration-only		Finish-only			



Project: Performance Assurance Plan Date: Wed 07/01/15	Task		Project Summary		Inactive Milestone		Manual Summary Rollup		Progress	
	Split		External Tasks		Inactive Summary		Manual Summary		Deadline	
	Milestone		External Milestone		Manual Task		Start-only			
	Summary		Inactive Task		Duration-only		Finish-only			

5 15 Jun '15 22 Jun '15 29 Jun '15 06 Jul '15 13 Jul '15 20 Jul '15 27 Jul '15 03 Aug '15 10 Aug '15 17 Aug '15
W T F S S M T W T F S S M T W T F S S M T W T F S S M T W T F S S M T W T F S S M T W T F S S



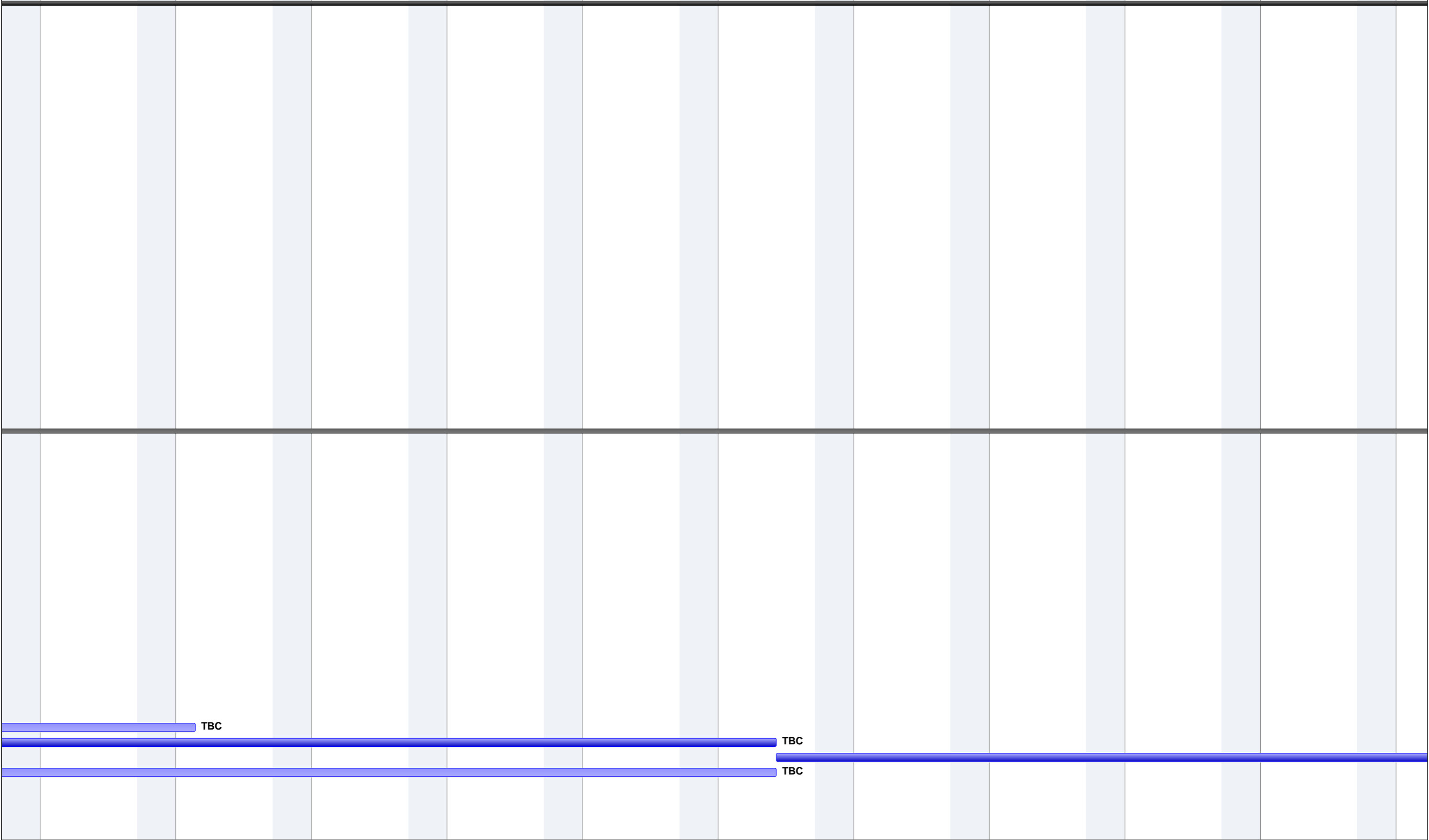
Project: Performance Assurance Plan Date: Wed 07/01/15	Task		Project Summary		Inactive Milestone		Manual Summary Rollup		Progress	
	Split		External Tasks		Inactive Summary		Manual Summary		Deadline	
	Milestone		External Milestone		Manual Task		Start-only			
	Summary		Inactive Task		Duration-only		Finish-only			

5	15 Jun '15					22 Jun '15					29 Jun '15					06 Jul '15					13 Jul '15					20 Jul '15					27 Jul '15					03 Aug '15					10 Aug '15					17 Aug '15																					
W	T	F	S	S	M	T	W	T	F	S	S	M	T	W	T	F	S	S	M	T	W	T	F	S	S	M	T	W	T	F	S	S	M	T	W	T	F	S	S	M	T	W	T	F	S	S	M	T	W	T	F	S	S	M	T	W	T	F	S	S	M	T	W	T	F	S	S



Project: Performance Assurance Plan Date: Wed 07/01/15	Task		Project Summary		Inactive Milestone		Manual Summary Rollup		Progress	
	Split		External Tasks		Inactive Summary		Manual Summary		Deadline	
	Milestone		External Milestone		Manual Task		Start-only			
	Summary		Inactive Task		Duration-only		Finish-only			

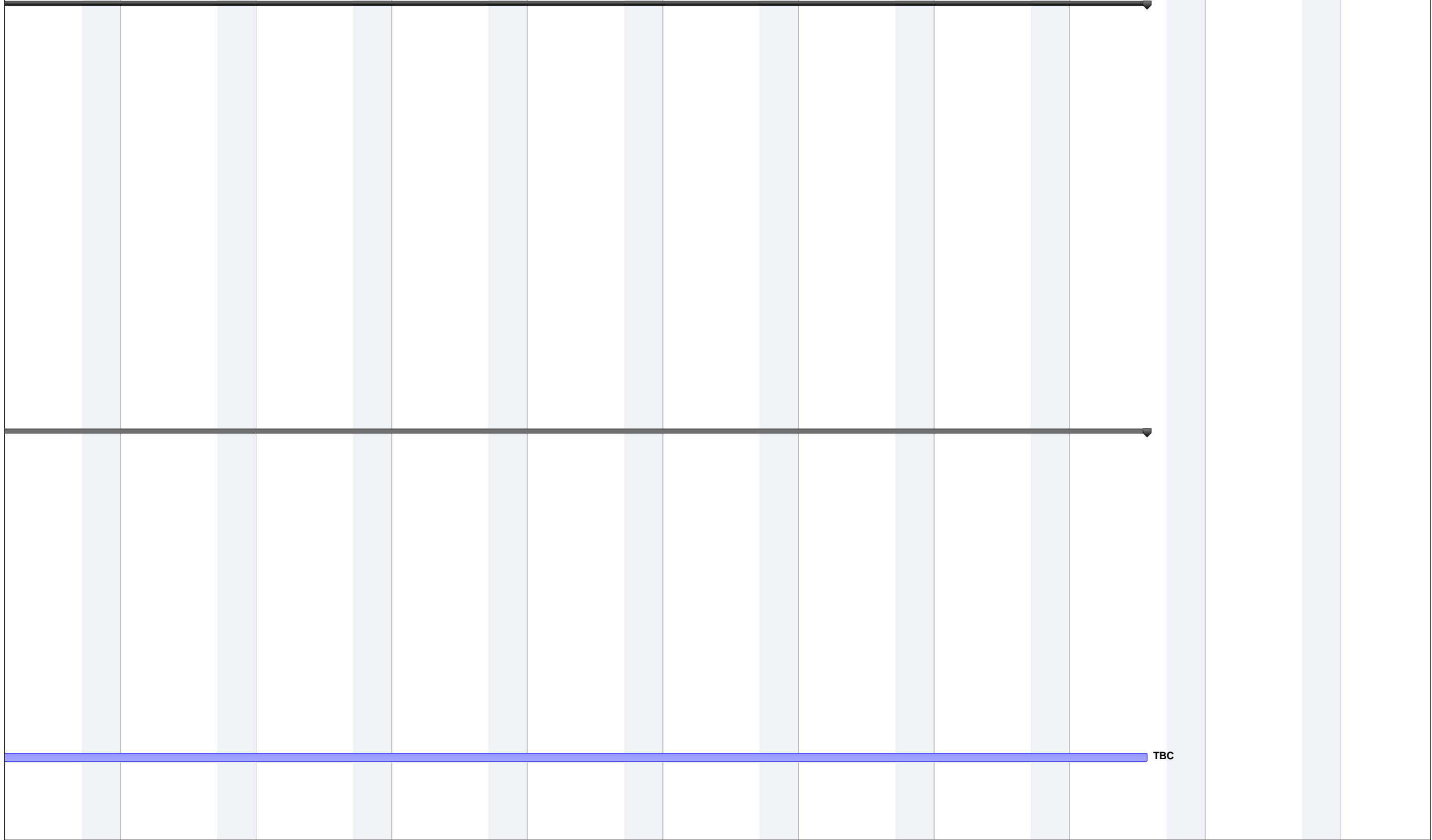
24 Aug '15 31 Aug '15 07 Sep '15 14 Sep '15 21 Sep '15 28 Sep '15 05 Oct '15 12 Oct '15 19 Oct '15 26 Oct '15 02 Nov



Project: Performance Assurance Plan
Date: Wed 07/01/15

Task		Project Summary		Inactive Milestone		Manual Summary Rollup		Progress	
Split		External Tasks		Inactive Summary		Manual Summary		Deadline	
Milestone		External Milestone		Manual Task		Start-only			
Summary		Inactive Task		Duration-only		Finish-only			

ov '15 09 Nov '15 16 Nov '15 23 Nov '15 30 Nov '15 07 Dec '15 14 Dec '15 21 Dec '15 28 Dec '15 04 Jan '16 11 Jan '16



Project: Performance Assurance Plan Date: Wed 07/01/15	Task		Project Summary		Inactive Milestone		Manual Summary Rollup		Progress	
	Split		External Tasks		Inactive Summary		Manual Summary		Deadline	
	Milestone		External Milestone		Manual Task		Start-only			
	Summary		Inactive Task		Duration-only		Finish-only			

