

ID	Task Name	Duration	Start	Baseline Finish	Finish	% Complete	Predecessors	Resource Names	18 Mar
									M T
1	<b>Overall Performance Assurance Plan</b>	<b>727 days</b>	<b>Wed 20/03/13</b>	<b>Wed 31/12/14</b>	<b>Thu 31/12/15</b>	<b>11%</b>			
2	<b>Independent Study of Performance Risk</b>	<b>334 days</b>	<b>Wed 20/03/13</b>	<b>Wed 31/12/14</b>	<b>Mon 30/06/14</b>	<b>45%</b>			
3	✓ Create scope for an independent study of the settlement process (incl consultation with Workgroup)	89 days	Wed 20/03/13	Mon 22/07/13	Mon 22/07/13	100%		PAW	
4	✓ Determine possible level of funding for the independent study	29 days	Wed 12/06/13	Mon 22/07/13	Mon 22/07/13	100%		PAW	
5	✓ Determine how the independent study will be funded	36 days	Mon 16/09/13	Mon 04/11/13	Mon 04/11/13	100%		Ofgem	
6	✓ Ofgem to write to EUK, ICOSS and ENA	56 days	Fri 04/10/13	Fri 04/10/13	Fri 20/12/13	100%		Ofgem	
7	✓ Responses from EUK, ICOSS and ENA	55 days	Mon 11/11/13	Mon 04/11/13	Fri 24/01/14	100%		EUK/ICOSS/ENA	
8	✓ Agree mechanism for paying for independent study	5 days	Mon 11/11/13	Mon 04/11/13	Fri 15/11/13	100%		Ofgem	
9	✓ Identify possible service providers for independent study	76 days	Mon 22/07/13	Mon 04/11/13	Mon 04/11/13	100%		Ofgem	
10	📅 Tender for independent study	85 days	Mon 02/12/13	Fri 29/11/13	Fri 28/03/14	0%		Ofgem	
11	📅 Undertake tender evaluation (including mtgs with tenderers)	108 days	Mon 02/12/13	Mon 09/12/13	Wed 30/04/14	0%		Ofgem	
12	📅 Agree party for independent study	3 days	Wed 14/05/14	Mon 09/12/13	Fri 16/05/14	0%		Ofgem	
13	📅 Contract with independent study party	11 days	Fri 09/05/14	Tue 24/12/13	Fri 23/05/14	0%		Ofgem	
14	📅 Commence independent study	1 day	Mon 26/05/14	Wed 01/01/14	Mon 26/05/14	0%		Ofgem	
15	📅 Conclude independent study (including risk register of "theoretical process")	1 day	Fri 13/06/14	Fri 18/04/14	Fri 13/06/14	0%		Ofgem	
16	📅 PAF Group to consider independent study and any reporting required from Xoserve/SPAA	1 day	Fri 20/06/14	Thu 01/05/14	Fri 20/06/14	0%		Ofgem	
17	📅 Xoserve/SPAA to provide reporting	117 days	Thu 16/01/14	Wed 31/12/14	Fri 27/06/14	0%		Xoserve/SPAA	
18	📅 PAF Group to consider reporting and agree materiality	1 day	Fri 27/06/14	Fri 31/01/14	Fri 27/06/14	0%		PAW	
19	📅 PAF Group to consider ongoing data elements for PAF	96 days	Fri 14/02/14	Fri 14/02/14	Fri 27/06/14	0%		PAW	
20	📅 1st cut of data elements for PAF and performance monitoring to be reviewed by the PAF Group	1 day	Mon 30/06/14	Mon 30/06/14	Mon 30/06/14	0%		PAW	
21	<b>Performance Assurance Framework Development</b>	<b>243 days</b>	<b>Wed 25/09/13</b>	<b>Wed 01/10/14</b>	<b>Fri 29/08/14</b>	<b>8%</b>			
22	<b>Reporting</b>	<b>156 days</b>	<b>Wed 25/09/13</b>	<b>Mon 31/03/14</b>	<b>Wed 30/04/14</b>	<b>25%</b>			
23	✓ Consider reporting that Xoserve currently does	1 day	Wed 25/09/13	Wed 25/09/13	Wed 25/09/13	100%		PAW	
24	✓ Determine appropriateness of existing reporting	1 day	Wed 25/09/13	Wed 25/09/13	Wed 25/09/13	100%		PAW	
25	✓ Consider any additional reporting/controls necessary for post Nexus functionality/market model	105 days	Wed 25/09/13	Fri 29/11/13	Tue 18/02/14	100%		PAW	
26	📅 Agree future reporting required, in line with Project Nexus Workgroup	148 days	Wed 25/09/13	Fri 29/11/13	Fri 18/04/14	0%		PAW/PNUNC	
27	📅 Determine individual elements and timings of reporting	97 days	Tue 17/12/13	Tue 31/12/13	Wed 30/04/14	0%		PAW	
28	📅 Determine individual elements and timings of performance monitoring	75 days	Tue 17/12/13	Mon 31/03/14	Mon 31/03/14	0%		PAW	
29	<b>Overall Governance Arrangements</b>	<b>161 days</b>	<b>Mon 11/11/13</b>	<b>Fri 13/06/14</b>	<b>Mon 23/06/14</b>	<b>0%</b>			
30	✓ Agree main parties to the PAF - e.g. Transporters, Shippers, Xoserve	1 day	Mon 11/11/13	Fri 31/01/14	Mon 11/11/13	100%		PAW	
31	📅 Agree what current governance arrangements will be impacted by the PAF and if anything new will be required	108 days	Tue 17/12/13	Thu 15/05/14	Thu 15/05/14	0%		PAW	
32	📅 Commence discussions with other governance bodies (if required)	97 days	Tue 17/12/13	Fri 28/02/14	Wed 30/04/14	0%		PAW	
33	📅 Agree the funding parties for PAF	75 days	Tue 17/12/13	Mon 31/03/14	Mon 31/03/14	0%		PAW	
34	📅 Agree if an annual budget is required	75 days	Tue 17/12/13	Mon 31/03/14	Mon 31/03/14	0%		PAW	
35	📅 Determine how funding, budget and apportionments are agreed	1 day	Wed 30/04/14	Wed 30/04/14	Wed 30/04/14	0%		PAW	
36	📅 Discuss and agree spilt of duties/responsibilities between SPAA and the UNC	1 day	Wed 30/04/14	Wed 30/04/14	Wed 30/04/14	0%		PAW	
37	📅 Agree how the PAFA features in the PAF and interfaces with the UNC and SPAA	1 day	Wed 30/04/14	Wed 30/04/14	Wed 30/04/14	0%		PAW	
38	📅 Consider Ofgem's involvement/oversight	1 day	Wed 30/04/14	Wed 30/04/14	Wed 30/04/14	0%		PAW	
39	📅 Agree, in principle, the basis for the settlement risk premium	1 day	Mon 23/06/14	Wed 30/04/14	Mon 23/06/14	0%	16	PAW	
40	📅 Agree frequency (at least initial frequency) of the analysis of settlement risk and how often methodology needs to be updated (if at all)	1 day	Mon 23/06/14	Wed 30/04/14	Mon 23/06/14	0%	16	PAW	
41	📅 Agree governance around reporting - how to request new reports	1 day	Wed 14/05/14	Wed 14/05/14	Wed 14/05/14	0%	26	PAW	
42	📅 Decide if there is any consultation needed with Parties/Ofgem following the determination of a settlement risk penalty	1 day	Wed 14/05/14	Wed 14/05/14	Wed 14/05/14	0%	37	PAW/Ofgem	
43	📅 Determine individual elements and timings of incentive regime and invoicing (if deemed required under action 1)	1 day	Fri 13/06/14	Fri 13/06/14	Fri 13/06/14	0%	42	PAW	
44	📅 Determine individual elements and timings of assurance (if deemed required under action 1)	1 day	Fri 13/06/14	Fri 13/06/14	Fri 13/06/14	0%	28	PAW	
45	<b>Day to Day Governance Arrangements</b>	<b>108 days</b>	<b>Mon 02/12/13</b>	<b>Wed 30/04/14</b>	<b>Wed 30/04/14</b>	<b>0%</b>			
46	📅 Determine the need for an "oversight" workgroup/committee and, if necessary, its remit, frequency of meetings and if it could make decisions	108 days	Mon 02/12/13	Wed 30/04/14	Wed 30/04/14	0%		PAW	
47	📅 Determine role of Joint Office, Xoserve, Ofgem and SPAA and involvement in PAF	108 days	Mon 02/12/13	Wed 30/04/14	Wed 30/04/14	0%		PAW	
48	📅 Consider inclusion in UNC directly or via ancillary document	108 days	Mon 02/12/13	Wed 30/04/14	Wed 30/04/14	0%		PAW	
49	<b>Introducing the PAF</b>	<b>210 days</b>	<b>Mon 11/11/13</b>	<b>Wed 01/10/14</b>	<b>Fri 29/08/14</b>	<b>0%</b>			
50	📅 Develop business rules for PAF MOD	210 days	Mon 11/11/13	Fri 29/08/14	Fri 29/08/14	0%		PAW	
51	✓ Mod raised by BGT on independent study	1 day	Fri 07/02/14	Fri 07/02/14	Fri 07/02/14	100%		PAW	
52	📅 Consider two Mods for PAF and Policing / Administration	1 day	Wed 09/04/14	Wed 09/04/14	Wed 09/04/14	0%		PAW	
53	📅 Raise two Mods for PAF and Policing / Administration	1 day	Wed 30/04/14	Wed 30/04/14	Wed 30/04/14	0%		PAW	
54	📅 Mod panel meeting to discuss two Mods	1 day	Thu 15/05/14	Thu 15/05/14	Thu 15/05/14	0%		PAW	
55	<b>Performance Assurance Framework Administrator (PAFA)</b>	<b>563 days</b>	<b>Tue 05/11/13</b>	<b>Wed 31/12/14</b>	<b>Thu 31/12/15</b>	<b>1%</b>			
56	✓ Consider Elexon Tools	29 days	Tue 21/01/14	Fri 28/02/14	Fri 28/02/14	100%		PAW	

Project: Performance Assurance Plan  
Date: Mon 10/03/14

Task		Project Summary		Inactive Milestone		Manual Summary Rollup		Progress	
Split		External Tasks		Inactive Summary		Manual Summary		Deadline	
Milestone		External Milestone		Manual Task		Start-only			
Summary		Inactive Task		Duration-only		Finish-only			

ID	Task Name	Duration	Start	Baseline Finish	Finish	% Complete	Predecessors	Resource Names	18 Mar
									M T
57	Determine scope for the work on the PAF Administrator, based on model of assurance and performance requirements	163 days	Tue 17/12/13	Thu 31/07/14	Thu 31/07/14	0%		PAW	
58	Determine the scope of the PAFA performance reporting and analysis role	163 days	Tue 17/12/13	Thu 31/07/14	Thu 31/07/14	0%		PAW	
59	Consider if the PAFA will have an assurance role, as well as performance monitoring	163 days	Tue 17/12/13	Thu 31/07/14	Thu 31/07/14	0%		PAW	
60	Agree if the PAFA will provide "training services" for new entrants	163 days	Tue 17/12/13	Thu 31/07/14	Thu 31/07/14	0%		PAW	
61	Agree if the PAFA will provide "education" to parties performing poorly	163 days	Tue 17/12/13	Thu 31/07/14	Thu 31/07/14	0%		PAW	
62	Consider options for the contracting of the PAF administrator	138 days	Tue 21/01/14	Fri 29/08/14	Thu 31/07/14	0%		PAW	
63	Should the PAFA have a statutory role?	193 days	Tue 05/11/13	Fri 29/08/14	Thu 31/07/14	0%		PAW	
64	Who should contract the PAFA (a) initially and (b) ongoing?	138 days	Tue 21/01/14	Fri 29/08/14	Thu 31/07/14	0%		PAW	
65	Determine route to agree appointment, tender and award of PAFA	138 days	Tue 21/01/14	Fri 29/08/14	Thu 31/07/14	0%		PAW	
66	Identify possible service providers for PAFA	21 days	Fri 01/08/14	Fri 29/08/14	Fri 29/08/14	0%		PAW	
67	Prepare tender for PAFA appointment	21 days	Mon 01/09/14	Mon 29/09/14	Mon 29/09/14	0%		PAW	
68	Issue tender for the provision of PAFA	1 day	Tue 30/09/14	Tue 30/09/14	Tue 30/09/14	0%		TBC	
69	Undertake tender evaluation (including mtgs with tenderers)	23 days	Wed 01/10/14	Fri 31/10/14	Fri 31/10/14	0%		TBC	
70	Agree successful party who will do the PAFA work	1 day	Fri 14/11/14	Fri 14/11/14	Fri 14/11/14	0%		PAW	
71	Contract party for PAFA work	11 days	Fri 14/11/14	Fri 28/11/14	Fri 28/11/14	0% 15		TBC	
72	PAFA commences work - preparation (including meeting industry parties)	23 days	Mon 01/12/14	Wed 31/12/14	Wed 31/12/14	0%		TBC	
73	PAFA takes model from the independent study and supporting documentation and becomes familiar with it	23 days	Mon 01/12/14	Wed 31/12/14	Wed 31/12/14	0%		TBC	
74	PAFA establishes links with Xoserve (and possibly SPAA) to gain data necessary to run risk model	23 days	Mon 01/12/14	Wed 31/12/14	Wed 31/12/14	0%		TBC	
75	PAFA creates reporting on the agreed parameters deemed most material for settlement accuracy	45 days	Mon 01/12/14	Wed 31/12/14	Fri 30/01/15	0%		TBC	
76	PAFA issues reports to industry and Ofgem on a monthly basis to update on progress	218 days	Mon 01/12/14	Wed 31/12/14	Wed 30/09/15	0%		TBC	
77	PAFA liaises with Xoserve on monthly charges and re-distribution to be applied	66 days	Thu 01/10/15	Wed 31/12/14	Thu 31/12/15	0%		TBC	
78	PAFA issues first performance reports against Risk Register	218 days	Mon 01/12/14	Wed 31/12/14	Wed 30/09/15	0%		TBC	

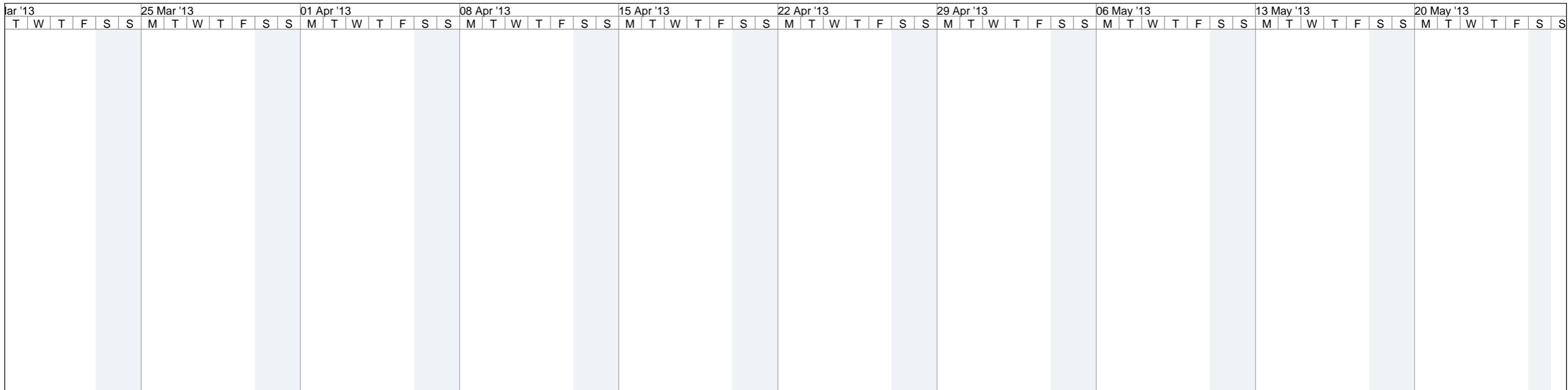
Project: Performance Assurance Plan  
Date: Mon 10/03/14

Task		Project Summary		Inactive Milestone		Manual Summary Rollup		Progress	
Split		External Tasks		Inactive Summary		Manual Summary		Deadline	
Milestone		External Milestone		Manual Task		Start-only			
Summary		Inactive Task		Duration-only		Finish-only			



Project: Performance Assurance Plan  
Date: Mon 10/03/14

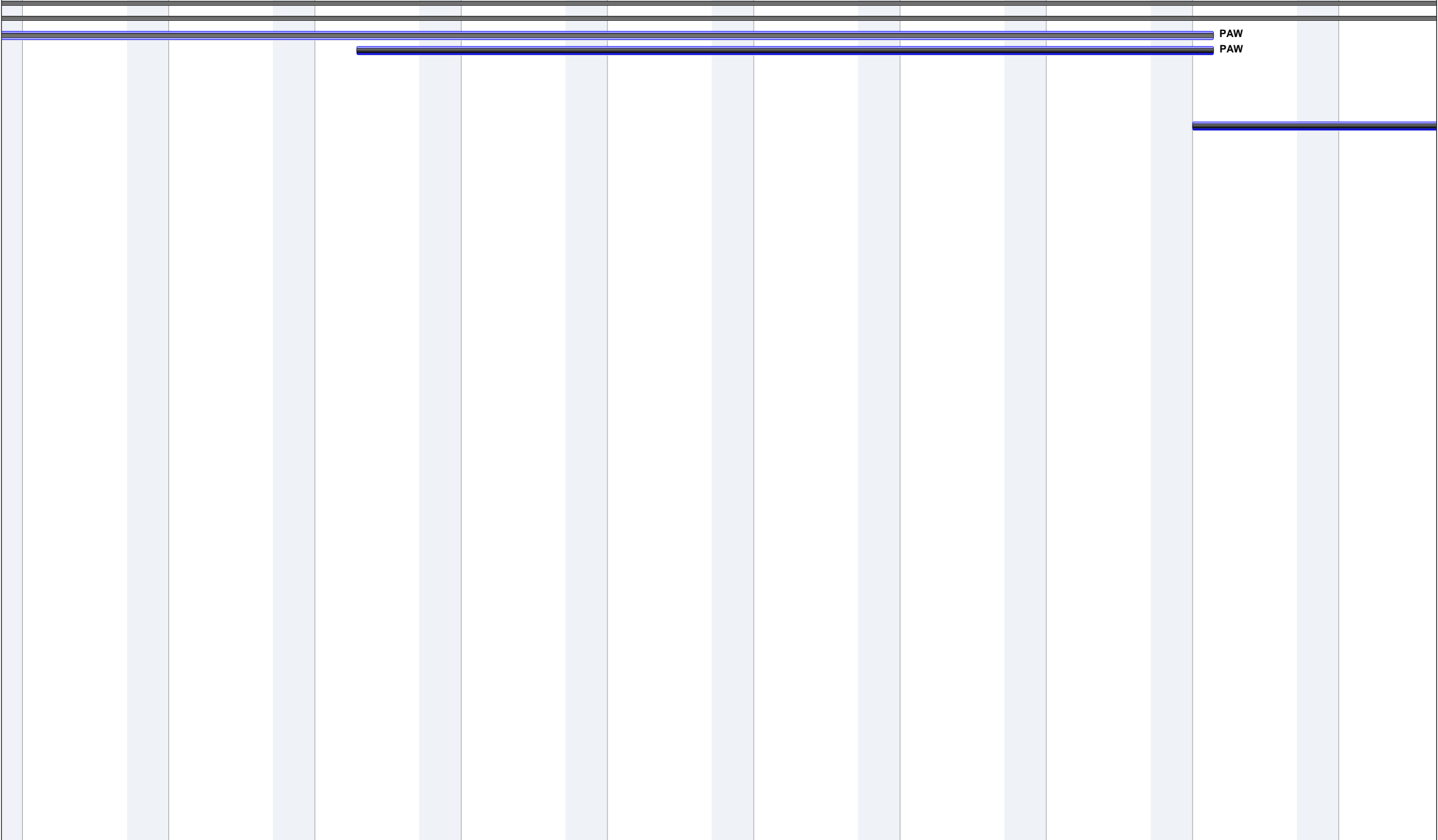
Task		Project Summary		Inactive Milestone		Manual Summary Rollup		Progress	
Split		External Tasks		Inactive Summary		Manual Summary		Deadline	
Milestone		External Milestone		Manual Task		Start-only			
Summary		Inactive Task		Duration-only		Finish-only			



Project: Performance Assurance Plan  
Date: Mon 10/03/14

Task		Project Summary		Inactive Milestone		Manual Summary Rollup		Progress	
Split		External Tasks		Inactive Summary		Manual Summary		Deadline	
Milestone		External Milestone		Manual Task		Start-only			
Summary		Inactive Task		Duration-only		Finish-only			

27 May '13 03 Jun '13 10 Jun '13 17 Jun '13 24 Jun '13 01 Jul '13 08 Jul '13 15 Jul '13 22 Jul '13 29 Jul '13



Project: Performance Assurance Plan  
Date: Mon 10/03/14

Task		Project Summary		Inactive Milestone		Manual Summary Rollup		Progress	
Split		External Tasks		Inactive Summary		Manual Summary		Deadline	
Milestone		External Milestone		Manual Task		Start-only			
Summary		Inactive Task		Duration-only		Finish-only			

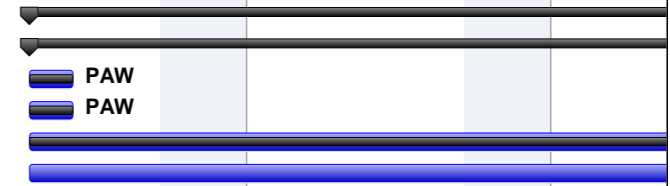
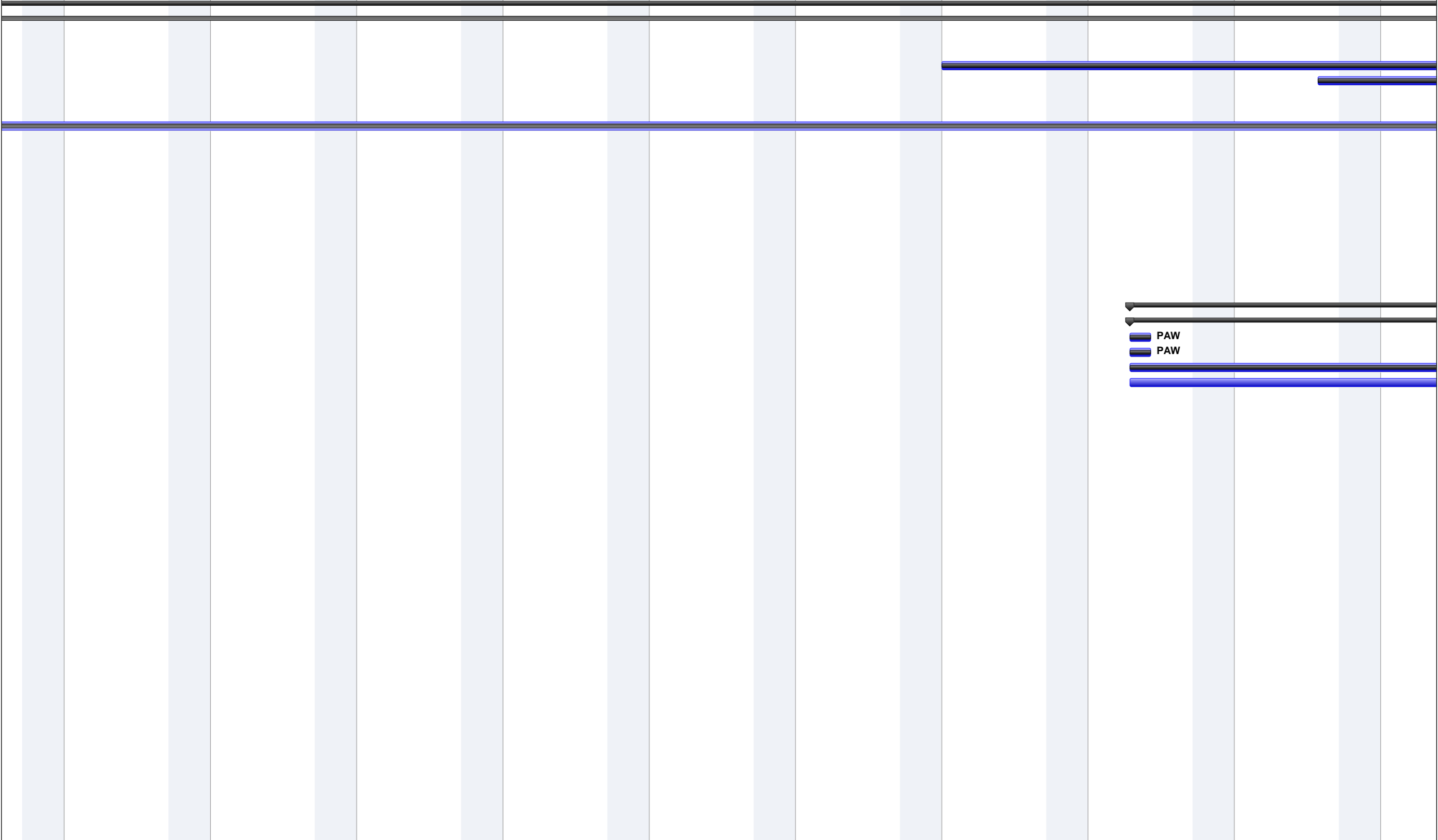
27 May '13							03 Jun '13							10 Jun '13							17 Jun '13							24 Jun '13							01 Jul '13							08 Jul '13							15 Jul '13							22 Jul '13							29 Jul '13																											
S	M	T	W	T	F	S	S	M	T	W	T	F	S	S	M	T	W	T	F	S	S	M	T	W	T	F	S	S	M	T	W	T	F	S	S	M	T	W	T	F	S	S	M	T	W	T	F	S	S	M	T	W	T	F	S	S	M	T	W	T	F	S	S	M	T	W	T	F	S	S	M	T	W	T	F	S														



Project: Performance Assurance Plan  
Date: Mon 10/03/14

Task		Project Summary		Inactive Milestone		Manual Summary Rollup		Progress	
Split		External Tasks		Inactive Summary		Manual Summary		Deadline	
Milestone		External Milestone		Manual Task		Start-only			
Summary		Inactive Task		Duration-only		Finish-only			

05 Aug '13 12 Aug '13 19 Aug '13 26 Aug '13 02 Sep '13 09 Sep '13 16 Sep '13 23 Sep '13 30 Sep '13 07 Oct '13



Project: Performance Assurance Plan  
Date: Mon 10/03/14

Task		Project Summary		Inactive Milestone		Manual Summary Rollup		Progress	
Split		External Tasks		Inactive Summary		Manual Summary		Deadline	
Milestone		External Milestone		Manual Task		Start-only			
Summary		Inactive Task		Duration-only		Finish-only			

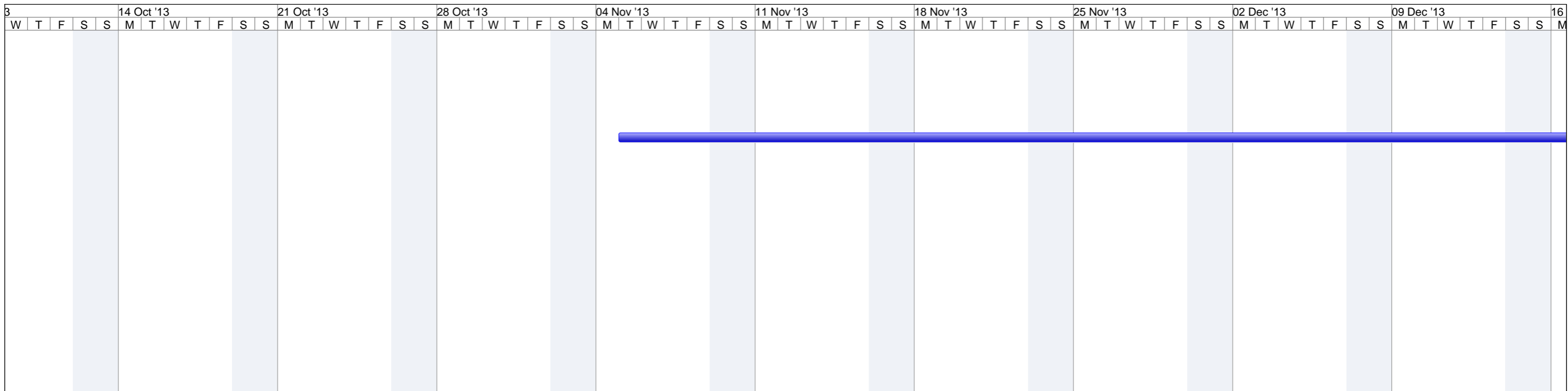
05 Aug '13			12 Aug '13			19 Aug '13			26 Aug '13			02 Sep '13			09 Sep '13			16 Sep '13			23 Sep '13			30 Sep '13			07 Oct '13																										
F	S	S	M	T	W	T	F	S	S	M	T	W	T	F	S	S	M	T	W	T	F	S	S	M	T	W	T	F	S	S	M	T	W	T	F	S	S	M	T	W	T	F	S	S	M	T	W						



Project: Performance Assurance Plan Date: Mon 10/03/14	Task		Project Summary		Inactive Milestone		Manual Summary Rollup		Progress	
	Split		External Tasks		Inactive Summary		Manual Summary		Deadline	
	Milestone		External Milestone		Manual Task		Start-only			
	Summary		Inactive Task		Duration-only		Finish-only			



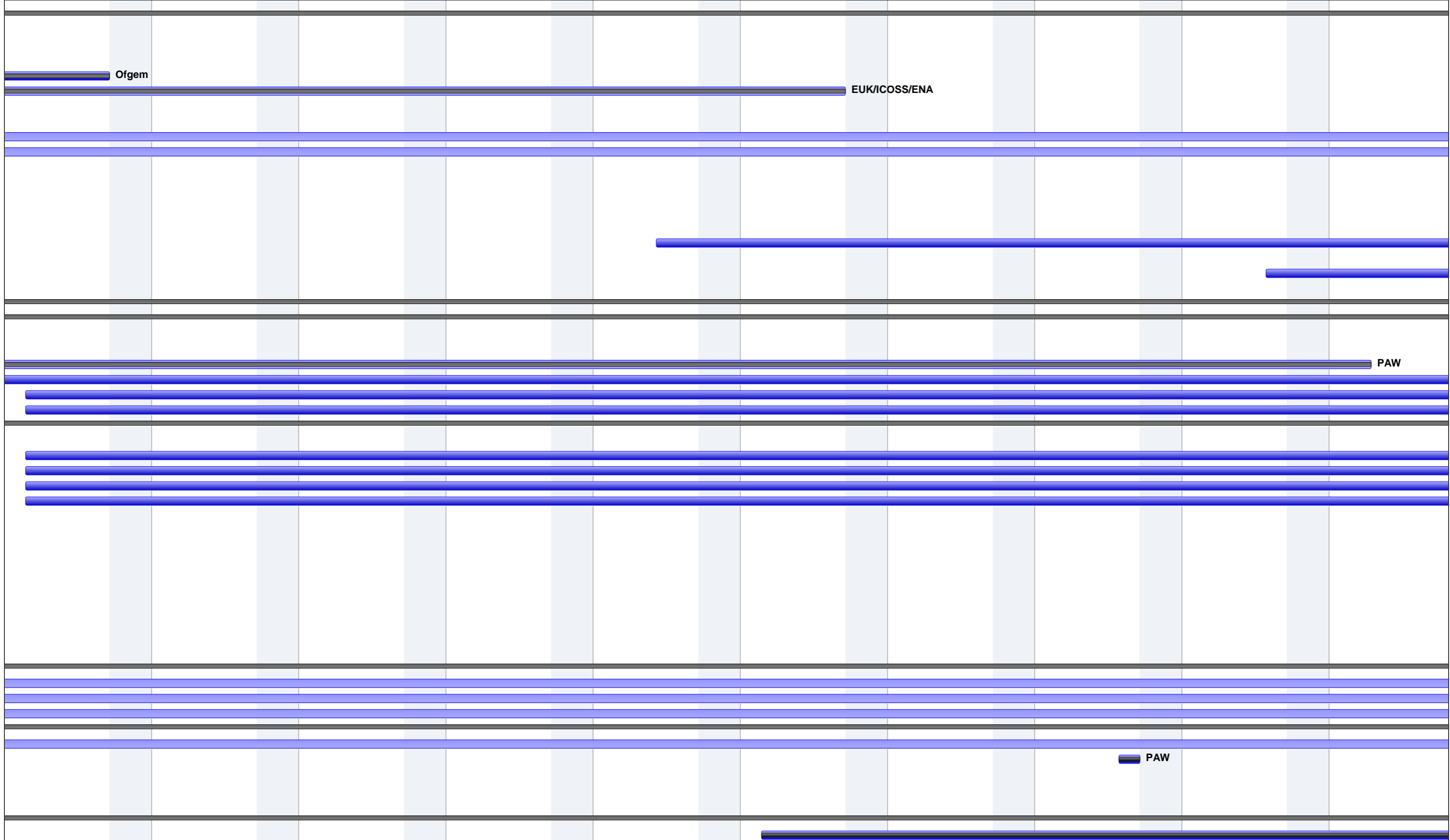




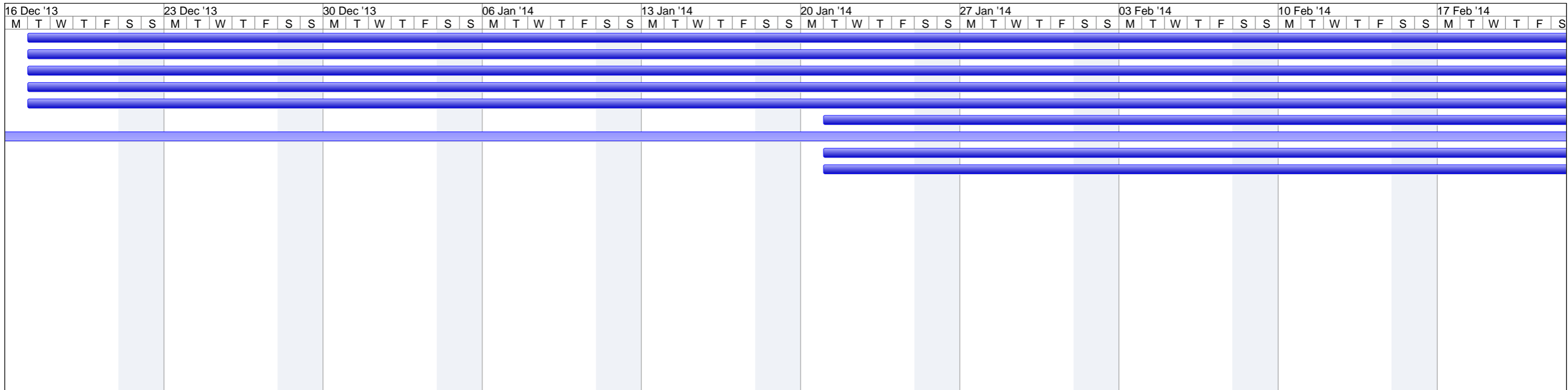
Project: Performance Assurance Plan  
Date: Mon 10/03/14

Task		Project Summary		Inactive Milestone		Manual Summary Rollup		Progress	
Split		External Tasks		Inactive Summary		Manual Summary		Deadline	
Milestone		External Milestone		Manual Task		Start-only			
Summary		Inactive Task		Duration-only		Finish-only			

16 Dec '13 23 Dec '13 30 Dec '13 06 Jan '14 13 Jan '14 20 Jan '14 27 Jan '14 03 Feb '14 10 Feb '14 17 Feb '14  
M T W T F S S M T W T F S S M T W T F S S M T W T F S S M T W T F S S M T W T F S S M T W T F S S



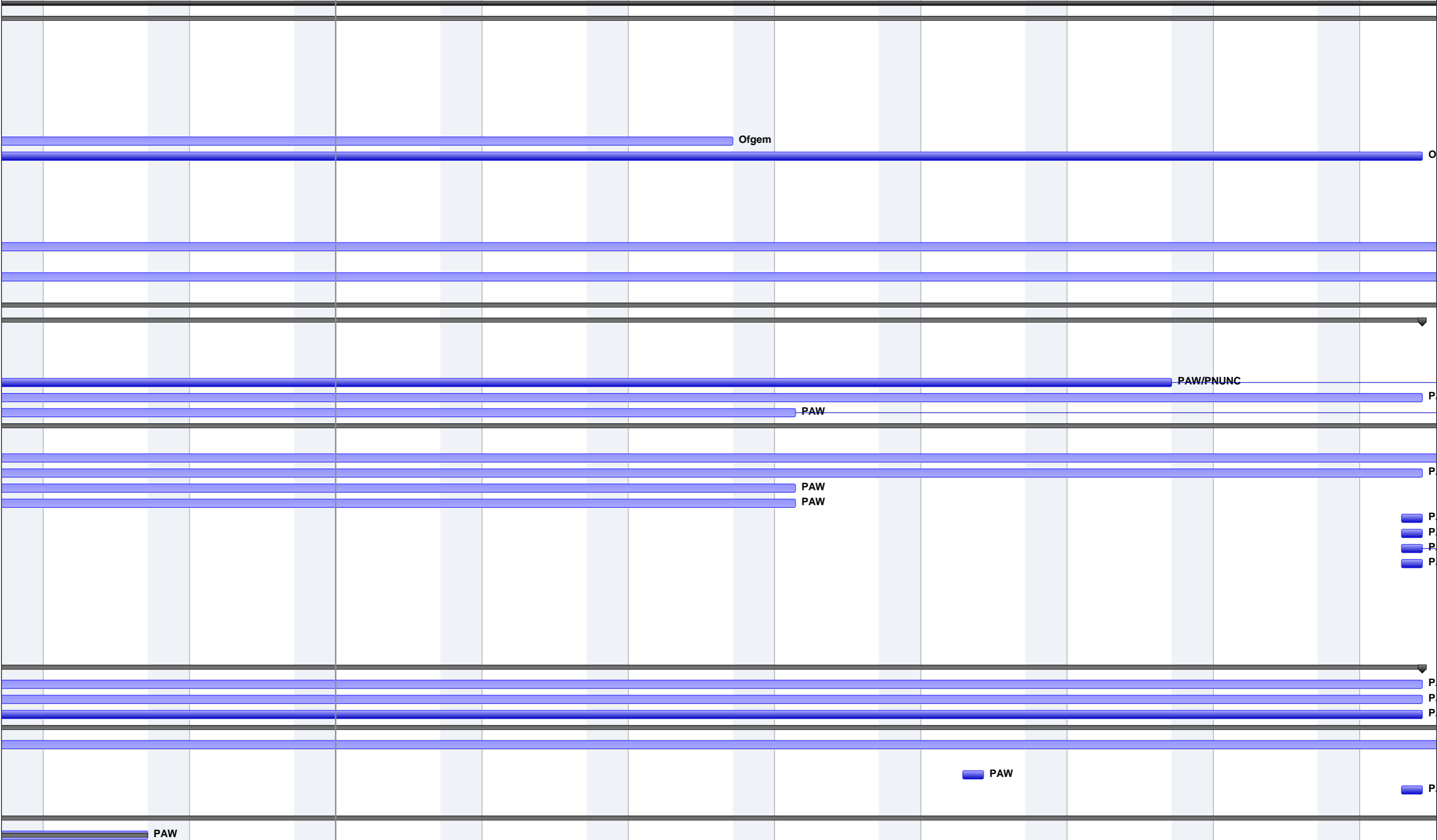
Project: Performance Assurance Plan Date: Mon 10/03/14	Task		Project Summary		Inactive Milestone		Manual Summary Rollup		Progress	
	Split		External Tasks		Inactive Summary		Manual Summary		Deadline	
	Milestone		External Milestone		Manual Task		Start-only			
	Summary		Inactive Task		Duration-only		Finish-only			



Project: Performance Assurance Plan  
Date: Mon 10/03/14

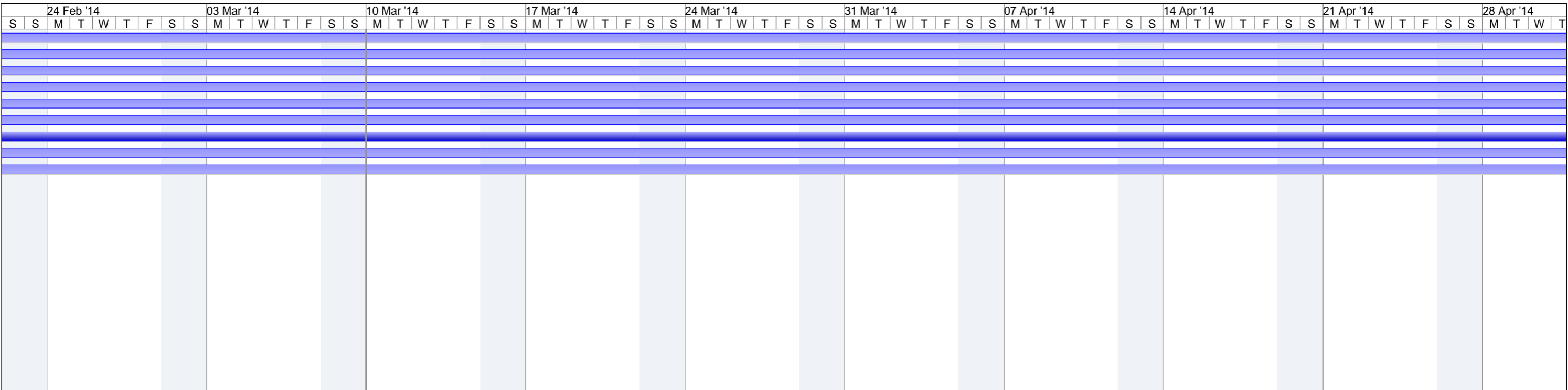
Task		Project Summary		Inactive Milestone		Manual Summary Rollup		Progress	
Split		External Tasks		Inactive Summary		Manual Summary		Deadline	
Milestone		External Milestone		Manual Task		Start-only			
Summary		Inactive Task		Duration-only		Finish-only			

24 Feb '14 03 Mar '14 10 Mar '14 17 Mar '14 24 Mar '14 31 Mar '14 07 Apr '14 14 Apr '14 21 Apr '14 28 Apr '14



Project: Performance Assurance Plan  
Date: Mon 10/03/14

Task		Project Summary		Inactive Milestone		Manual Summary Rollup		Progress	
Split		External Tasks		Inactive Summary		Manual Summary		Deadline	
Milestone		External Milestone		Manual Task		Start-only			
Summary		Inactive Task		Duration-only		Finish-only			



Project: Performance Assurance Plan  
Date: Mon 10/03/14

Task		Project Summary		Inactive Milestone		Manual Summary Rollup		Progress	
Split		External Tasks		Inactive Summary		Manual Summary		Deadline	
Milestone		External Milestone		Manual Task		Start-only			
Summary		Inactive Task		Duration-only		Finish-only			

T F S S M T W T F S S M T W T F S S M T W T F S S M T W T F S S M T W T F S S M T W T F S S M T

05 May '14

12 May '14

19 May '14

26 May '14

02 Jun '14

09 Jun '14

16 Jun '14

23 Jun '14

30 Jun '14

07 Jul '14

Ofgem

PAW

PAW

PAW

PAW

PAW

PAW

PAW

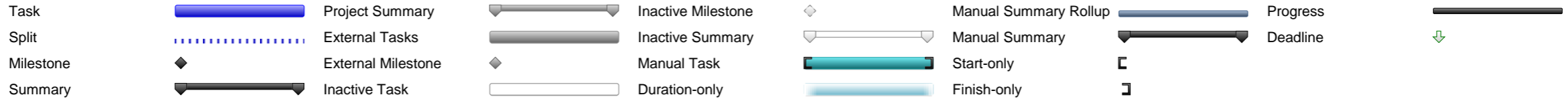
PAW

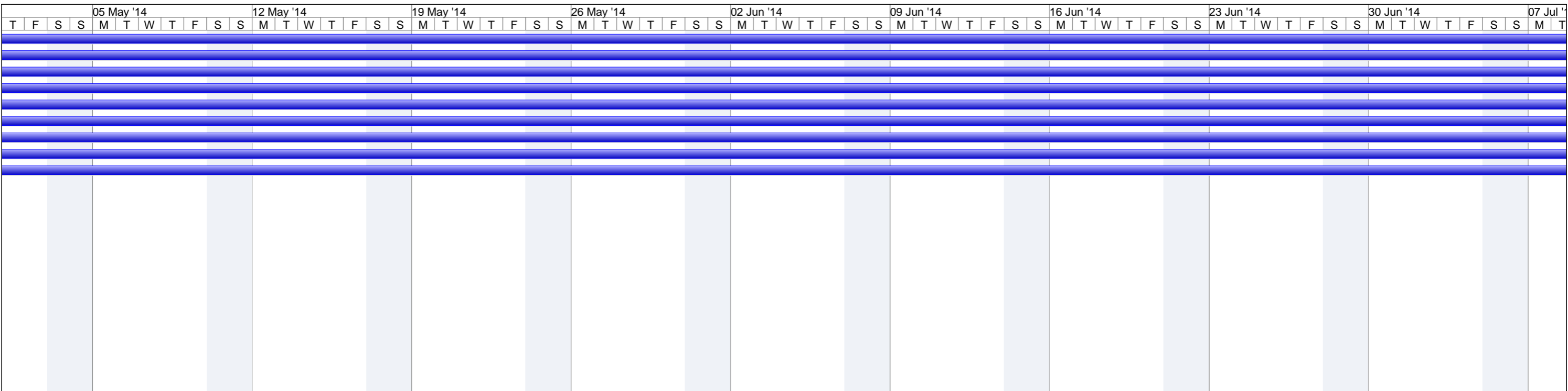
PAW

PAW

PAW

Project: Performance Assurance Plan  
Date: Mon 10/03/14



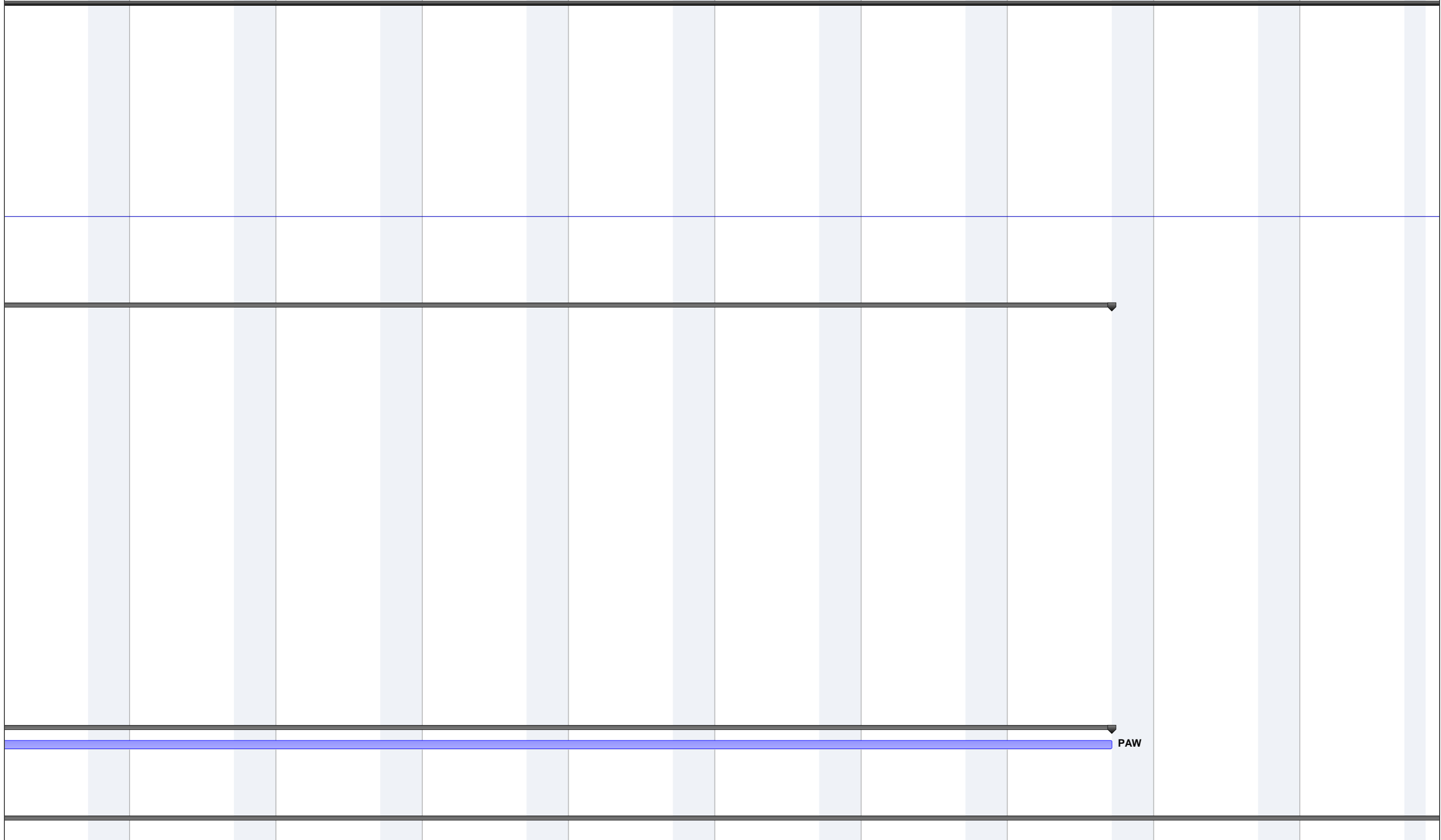


Project: Performance Assurance Plan  
Date: Mon 10/03/14

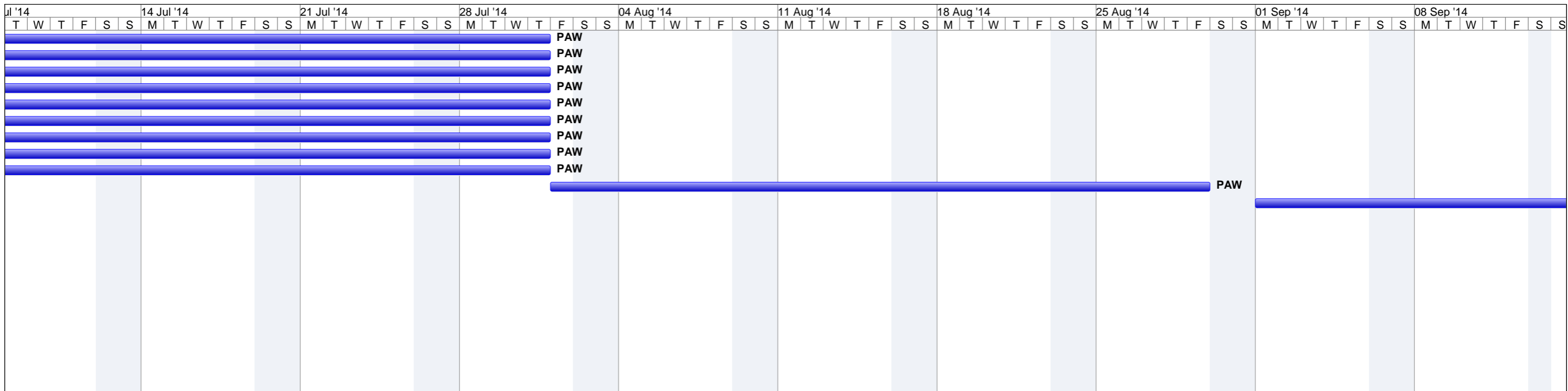
Task		Project Summary		Inactive Milestone		Manual Summary Rollup		Progress	
Split		External Tasks		Inactive Summary		Manual Summary		Deadline	
Milestone		External Milestone		Manual Task		Start-only			
Summary		Inactive Task		Duration-only		Finish-only			



Jul '14 14 Jul '14 21 Jul '14 28 Jul '14 04 Aug '14 11 Aug '14 18 Aug '14 25 Aug '14 01 Sep '14 08 Sep '14

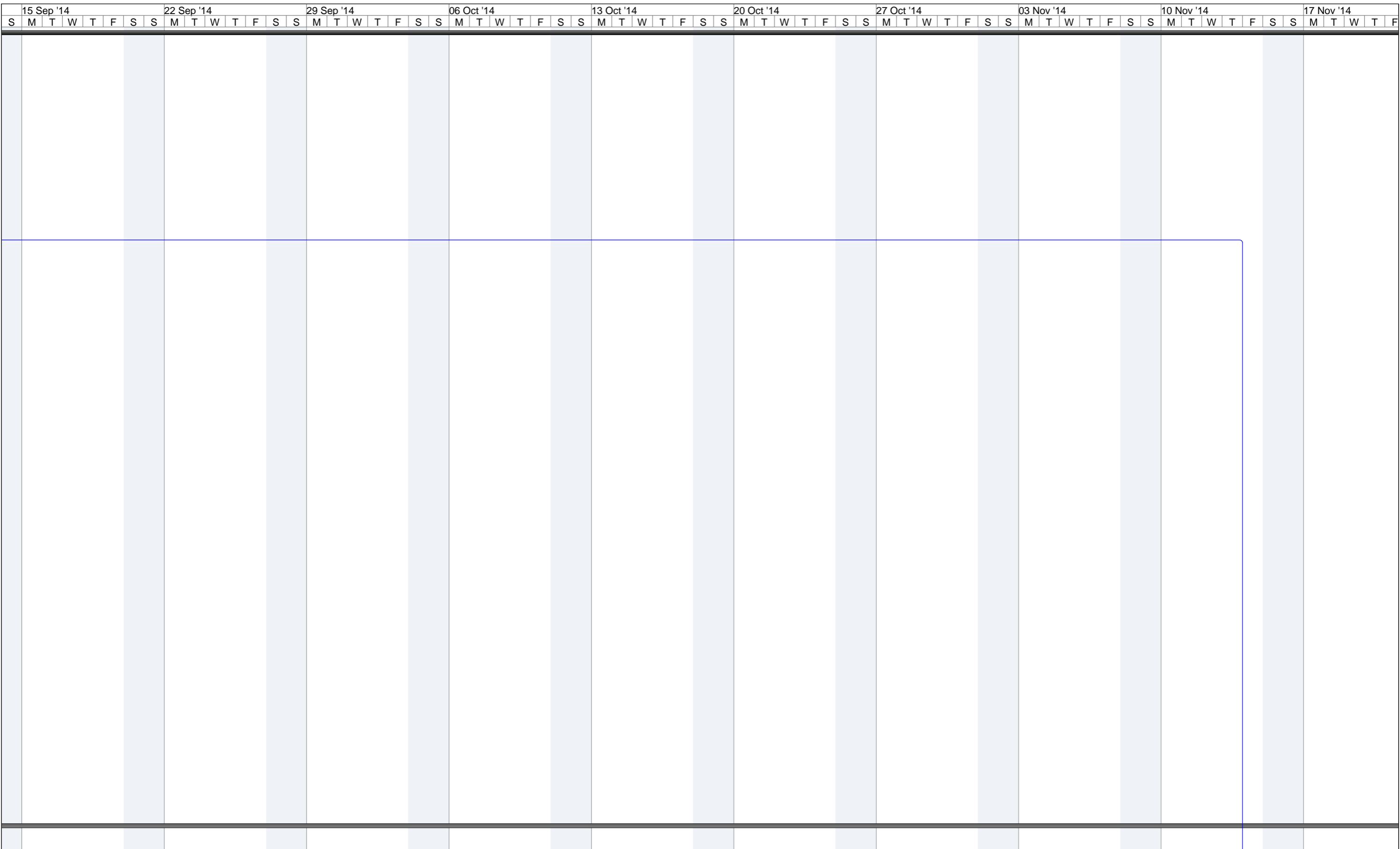


Project: Performance Assurance Plan Date: Mon 10/03/14	Task		Project Summary		Inactive Milestone		Manual Summary Rollup		Progress	
	Split		External Tasks		Inactive Summary		Manual Summary		Deadline	
	Milestone		External Milestone		Manual Task		Start-only			
	Summary		Inactive Task		Duration-only		Finish-only			



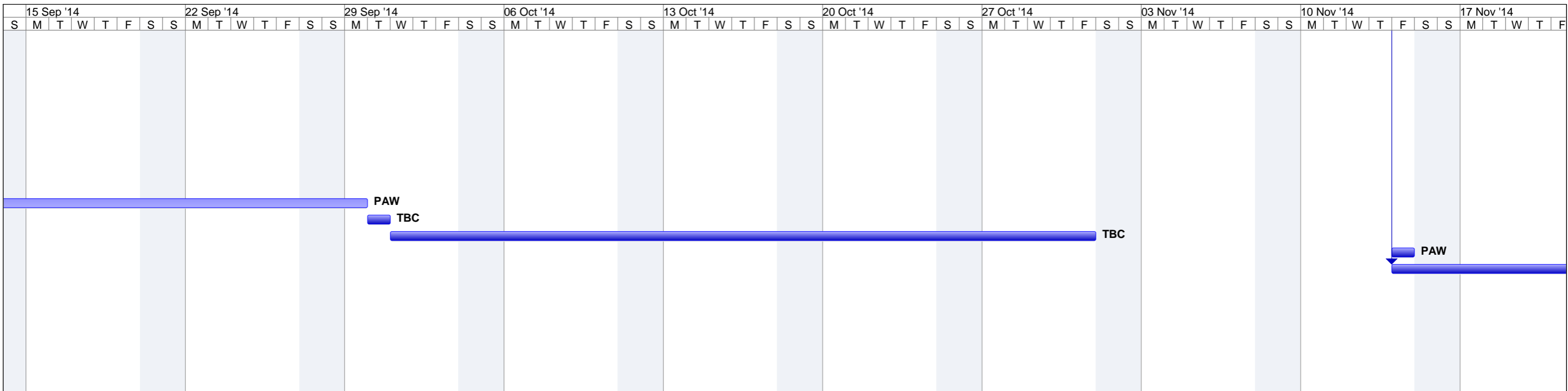
Project: Performance Assurance Plan  
Date: Mon 10/03/14

Task		Project Summary		Inactive Milestone		Manual Summary Rollup		Progress	
Split		External Tasks		Inactive Summary		Manual Summary		Deadline	
Milestone		External Milestone		Manual Task		Start-only			
Summary		Inactive Task		Duration-only		Finish-only			



Project: Performance Assurance Plan  
 Date: Mon 10/03/14

Task		Project Summary		Inactive Milestone		Manual Summary Rollup		Progress	
Split		External Tasks		Inactive Summary		Manual Summary		Deadline	
Milestone		External Milestone		Manual Task		Start-only			
Summary		Inactive Task		Duration-only		Finish-only			



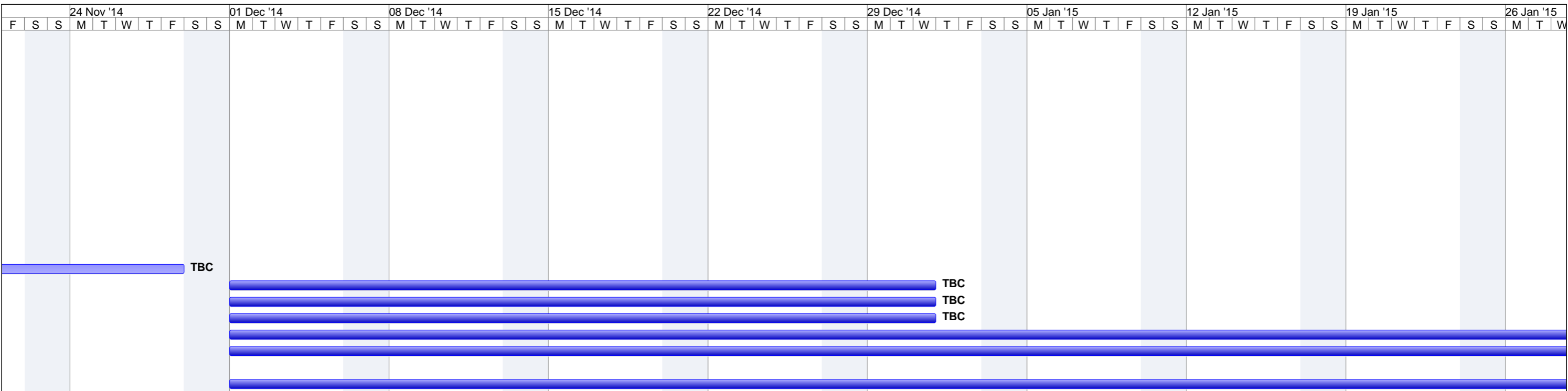
Project: Performance Assurance Plan  
Date: Mon 10/03/14

Task		Project Summary		Inactive Milestone		Manual Summary Rollup		Progress	
Split		External Tasks		Inactive Summary		Manual Summary		Deadline	
Milestone		External Milestone		Manual Task		Start-only			
Summary		Inactive Task		Duration-only		Finish-only			



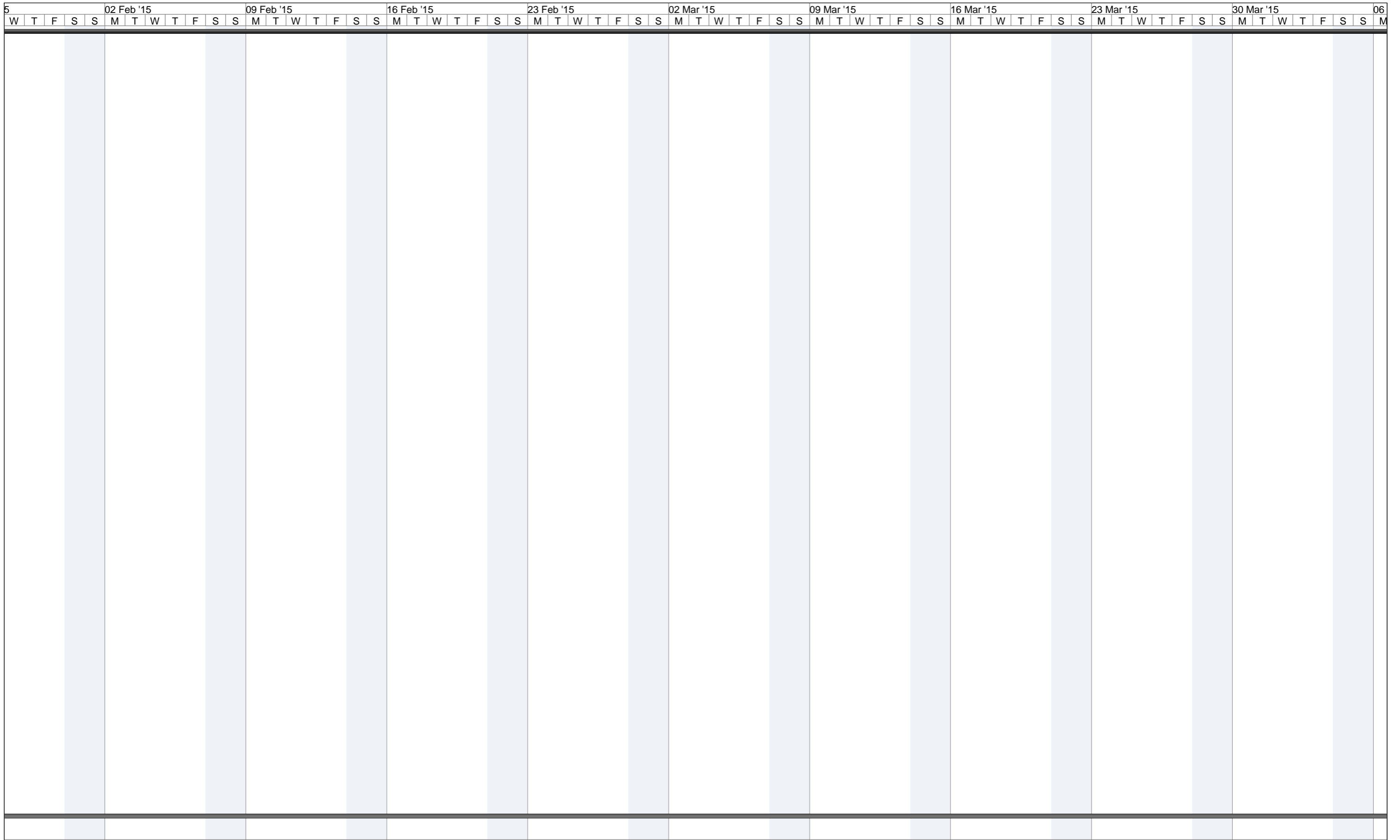
Project: Performance Assurance Plan  
Date: Mon 10/03/14

Task		Project Summary		Inactive Milestone		Manual Summary Rollup		Progress	
Split		External Tasks		Inactive Summary		Manual Summary		Deadline	
Milestone		External Milestone		Manual Task		Start-only			
Summary		Inactive Task		Duration-only		Finish-only			



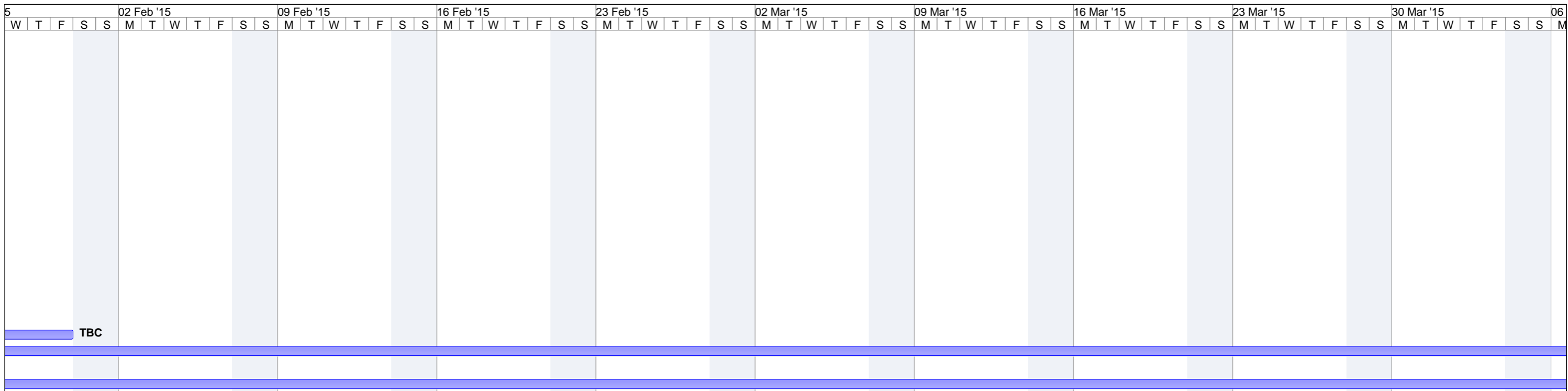
Project: Performance Assurance Plan  
Date: Mon 10/03/14

Task		Project Summary		Inactive Milestone		Manual Summary Rollup		Progress	
Split		External Tasks		Inactive Summary		Manual Summary		Deadline	
Milestone		External Milestone		Manual Task		Start-only			
Summary		Inactive Task		Duration-only		Finish-only			



Project: Performance Assurance Plan  
Date: Mon 10/03/14

Task		Project Summary		Inactive Milestone		Manual Summary Rollup		Progress	
Split		External Tasks		Inactive Summary		Manual Summary		Deadline	
Milestone		External Milestone		Manual Task		Start-only			
Summary		Inactive Task		Duration-only		Finish-only			



Project: Performance Assurance Plan  
Date: Mon 10/03/14

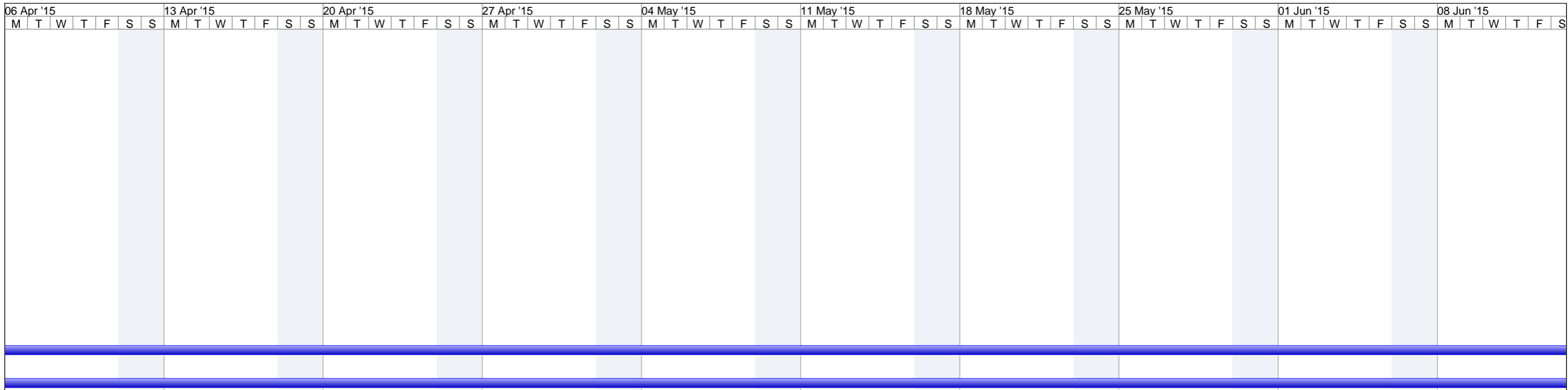
Task		Project Summary		Inactive Milestone		Manual Summary Rollup		Progress	
Split		External Tasks		Inactive Summary		Manual Summary		Deadline	
Milestone		External Milestone		Manual Task		Start-only			
Summary		Inactive Task		Duration-only		Finish-only			



06 Apr '15 13 Apr '15 20 Apr '15 27 Apr '15 04 May '15 11 May '15 18 May '15 25 May '15 01 Jun '15 08 Jun '15



Project: Performance Assurance Plan Date: Mon 10/03/14	Task		Project Summary		Inactive Milestone		Manual Summary Rollup		Progress	
	Split		External Tasks		Inactive Summary		Manual Summary		Deadline	
	Milestone		External Milestone		Manual Task		Start-only			
	Summary		Inactive Task		Duration-only		Finish-only			



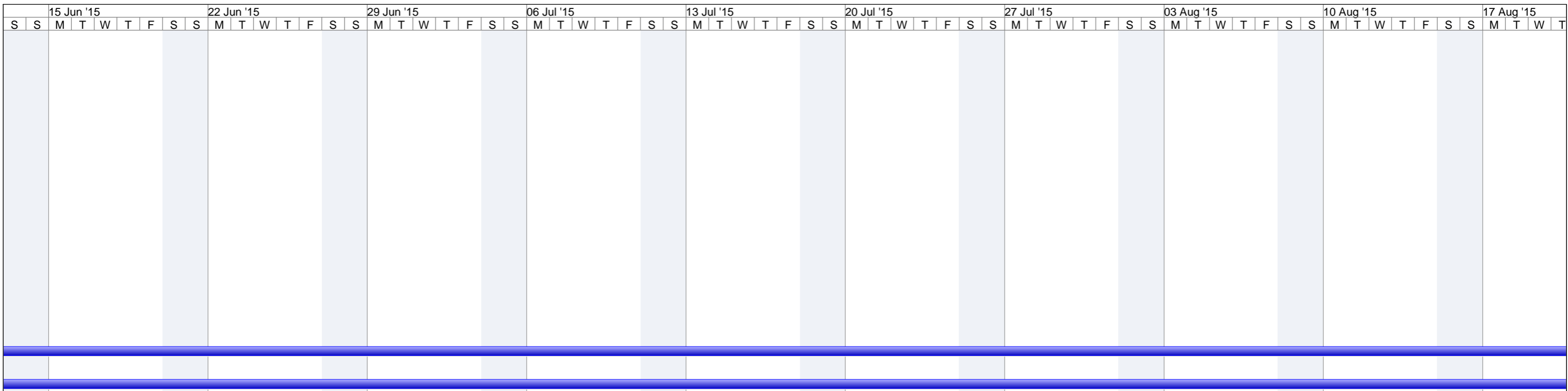
Project: Performance Assurance Plan  
Date: Mon 10/03/14

Task		Project Summary		Inactive Milestone		Manual Summary Rollup		Progress	
Split		External Tasks		Inactive Summary		Manual Summary		Deadline	
Milestone		External Milestone		Manual Task		Start-only			
Summary		Inactive Task		Duration-only		Finish-only			



Project: Performance Assurance Plan  
Date: Mon 10/03/14

Task		Project Summary		Inactive Milestone		Manual Summary Rollup		Progress	
Split		External Tasks		Inactive Summary		Manual Summary		Deadline	
Milestone		External Milestone		Manual Task		Start-only			
Summary		Inactive Task		Duration-only		Finish-only			



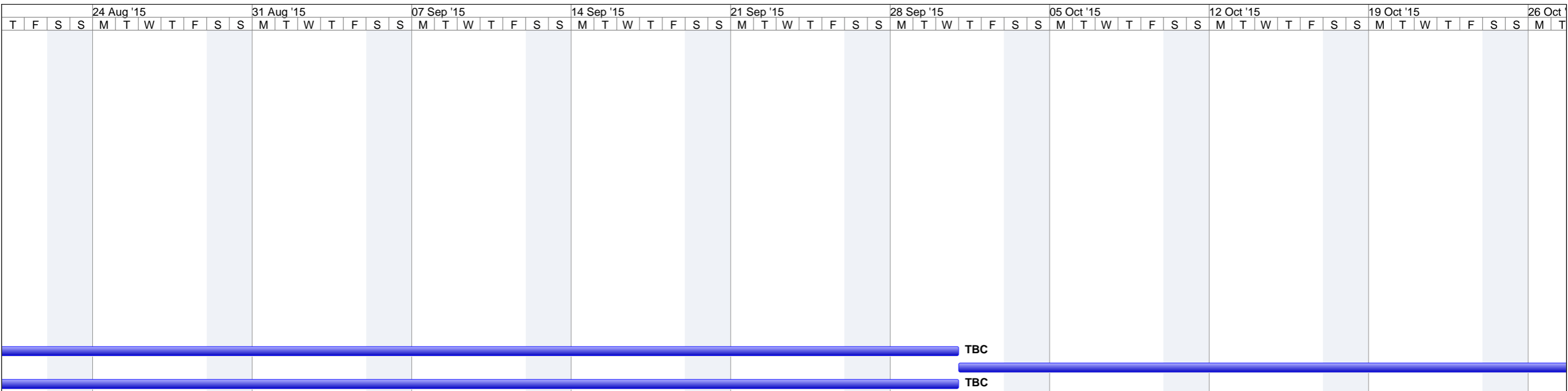
Project: Performance Assurance Plan  
Date: Mon 10/03/14

Task		Project Summary		Inactive Milestone		Manual Summary Rollup		Progress	
Split		External Tasks		Inactive Summary		Manual Summary		Deadline	
Milestone		External Milestone		Manual Task		Start-only			
Summary		Inactive Task		Duration-only		Finish-only			



Project: Performance Assurance Plan  
 Date: Mon 10/03/14

Task		Project Summary		Inactive Milestone		Manual Summary Rollup		Progress	
Split		External Tasks		Inactive Summary		Manual Summary		Deadline	
Milestone		External Milestone		Manual Task		Start-only			
Summary		Inactive Task		Duration-only		Finish-only			



Project: Performance Assurance Plan  
Date: Mon 10/03/14

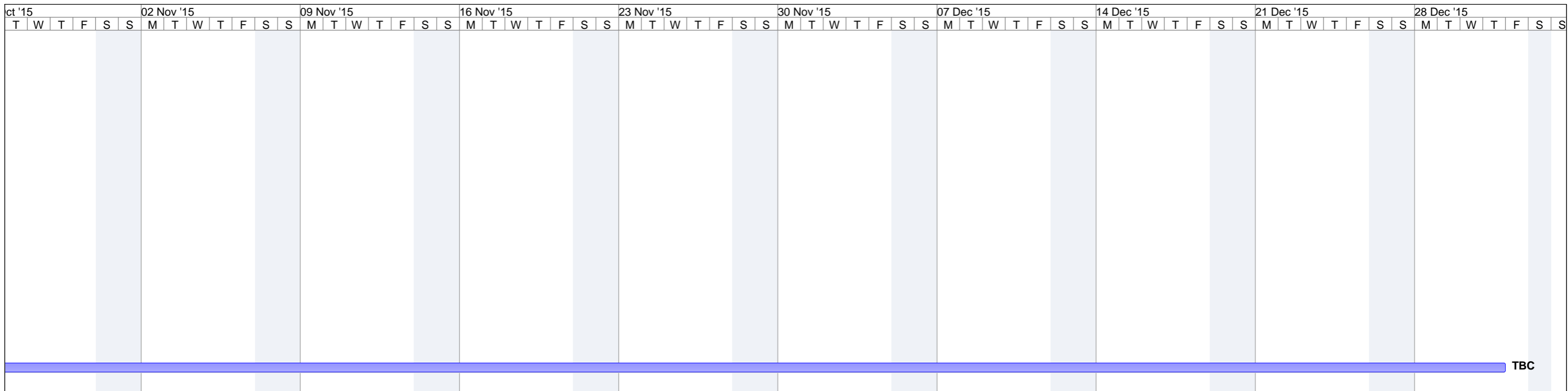
Task		Project Summary		Inactive Milestone		Manual Summary Rollup		Progress	
Split		External Tasks		Inactive Summary		Manual Summary		Deadline	
Milestone		External Milestone		Manual Task		Start-only			
Summary		Inactive Task		Duration-only		Finish-only			

ct '15      02 Nov '15      09 Nov '15      16 Nov '15      23 Nov '15      30 Nov '15      07 Dec '15      14 Dec '15      21 Dec '15      28 Dec '15



Project: Performance Assurance Plan  
Date: Mon 10/03/14

Task		Project Summary		Inactive Milestone		Manual Summary Rollup		Progress	
Split		External Tasks		Inactive Summary		Manual Summary		Deadline	
Milestone		External Milestone		Manual Task		Start-only			
Summary		Inactive Task		Duration-only		Finish-only			



Project: Performance Assurance Plan  
Date: Mon 10/03/14

Task		Project Summary		Inactive Milestone		Manual Summary Rollup		Progress	
Split		External Tasks		Inactive Summary		Manual Summary		Deadline	
Milestone		External Milestone		Manual Task		Start-only			
Summary		Inactive Task		Duration-only		Finish-only			