

respect > commitment > teamwork

# Annual Quantity End to End Process Walkthrough

19<sup>th</sup> August

An information only  
call out.

Denotes a change  
in the process.

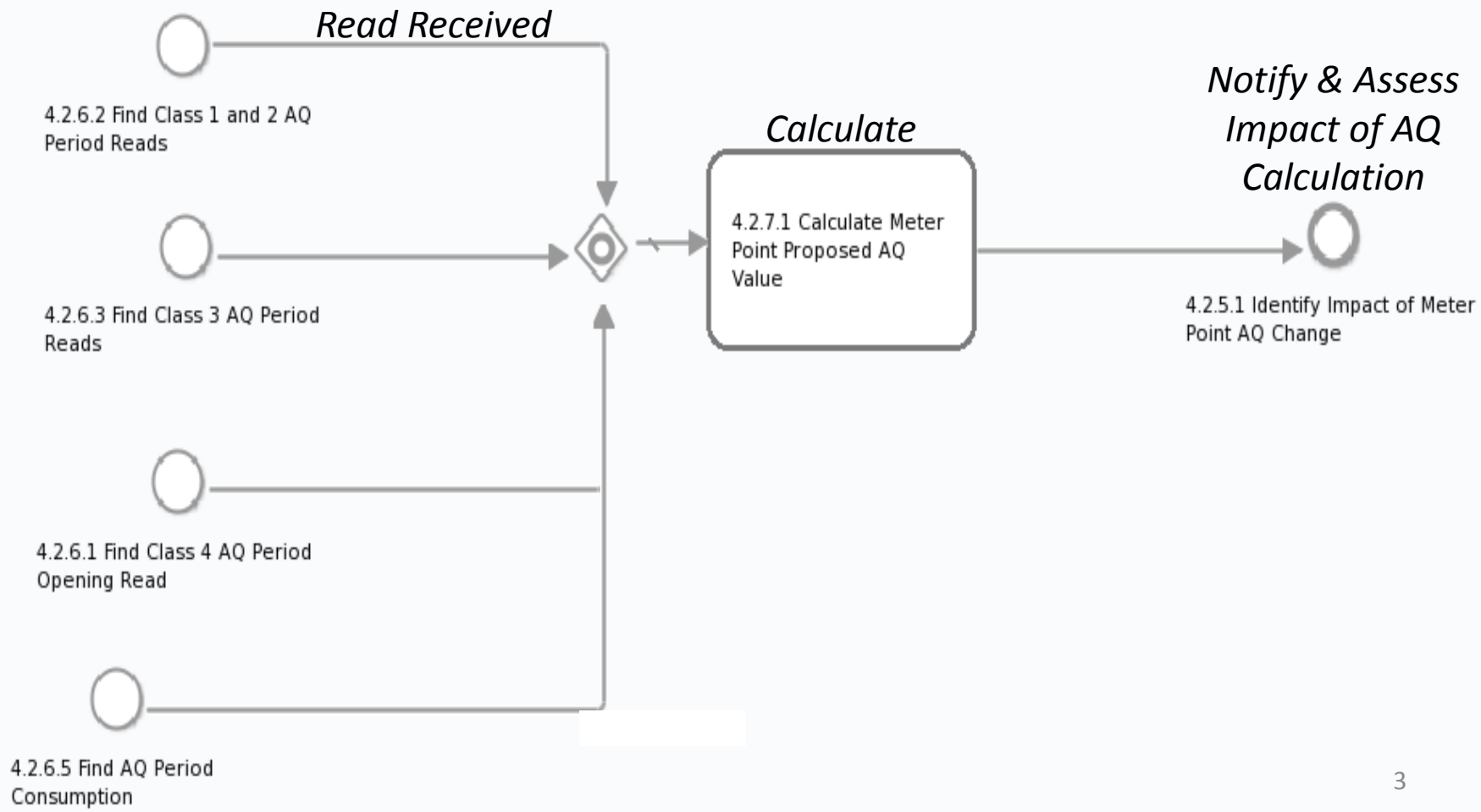
**xserve**

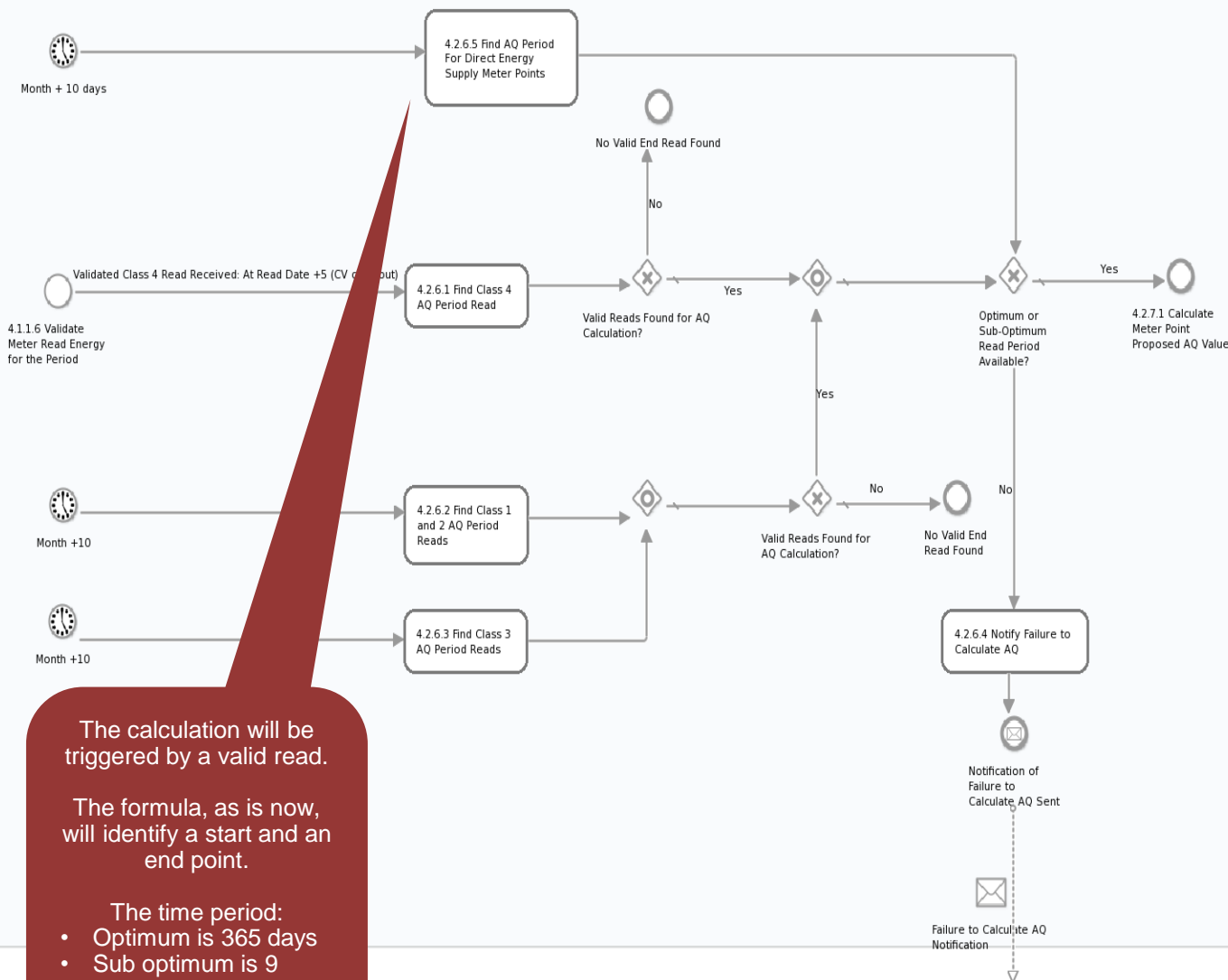


respect > commitment > teamwork

With the submission of a valid read, the read will have been received from the 11<sup>th</sup> of the previous month to the 10<sup>th</sup> of the current month (calendar days).

Xoserve





The calculation will be triggered by a valid read.

The formula, as is now, will identify a start and an end point.

- The time period:
- Optimum is 365 days
  - Sub optimum is 9 months
  - Maximum is 36 months

BRD Ref – 8.3.1

Isolated Supply Meter Points will not calculate an AQ.

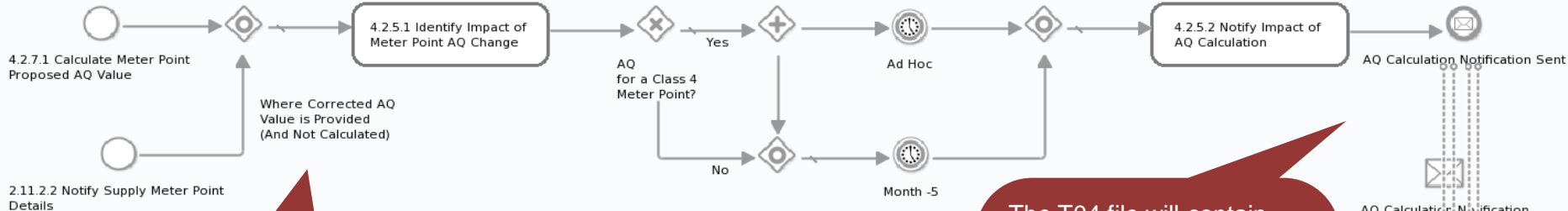
The current AQ (last calculated) will continue to apply (carry forward).

Where the Isolated Supply Meter Point is re-established the period of isolation shall be excluded from the AQ metered period for the purposes of calculation.

BRD Ref – 8.3.4

New Supply Meter Point will not be eligible for an AQ calculation for a period of 9 months. Reads can be loaded but will not be used until 9 months and then the next read will trigger the calculation and is only successful if there are sufficient reads within that time.

BRD Ref – 8.3.5



T04 will hold:

- The exceptions (failures to calculate)
- The calculated AQ values

BRD Ref – 8.12.2

All notifications of AQ values and the impacts of AQ will be communicated [M-5].

BRD Ref – 8.12

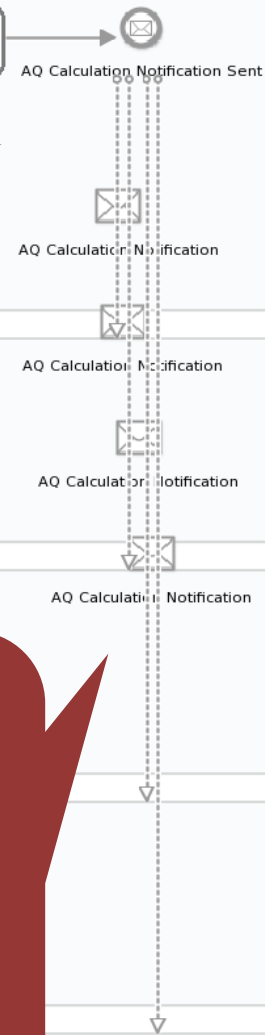
The T04 file will contain existing data items plus some new data items, including:

- Back stop date
- Billable AQ and SOQ
- Formula year start date
- Offer number
- Etc.

BRD Ref – 8.12

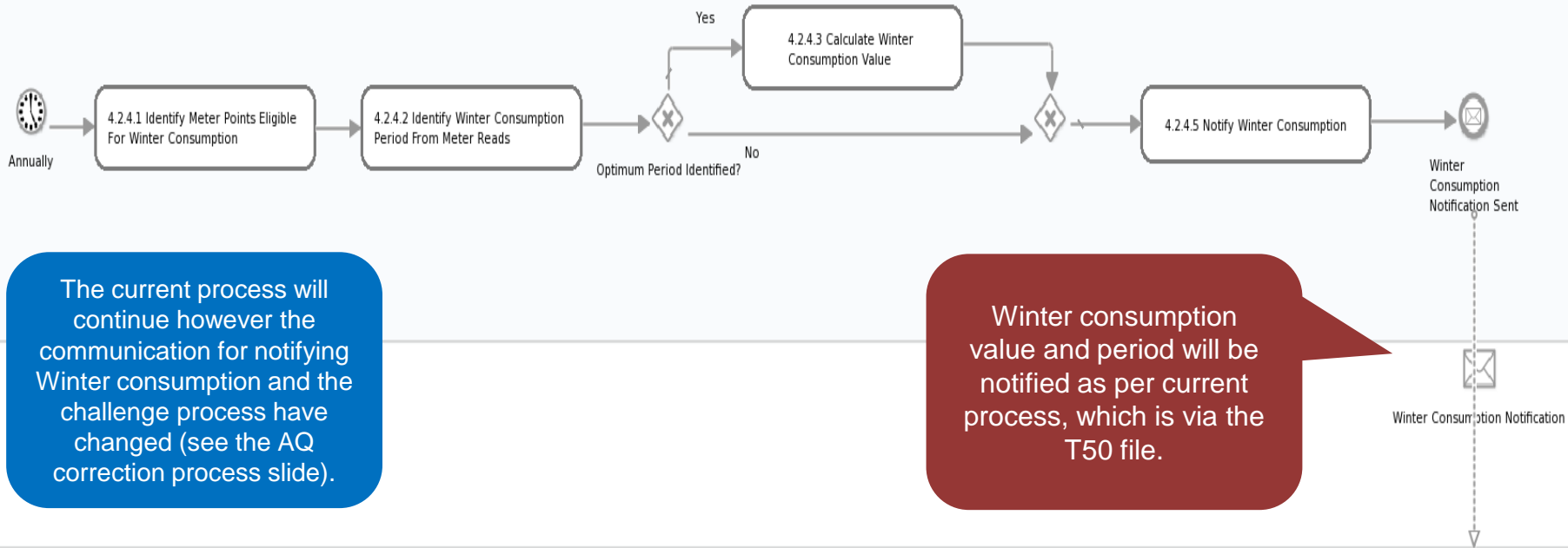
There are a number notification files generated due to a change in AQ. These include:

- A change to the current Meter Read Frequency is required
- Emergency Contact Details are required
- DMM Threshold Crosser
- AQ has fallen below the Priority Consumer Threshold



# Winter Consumption for Large Supply Points

Xoserve



The current process will continue however the communication for notifying Winter consumption and the challenge process have changed (see the AQ correction process slide).

Winter consumption value and period will be notified as per current process, which is via the T50 file.

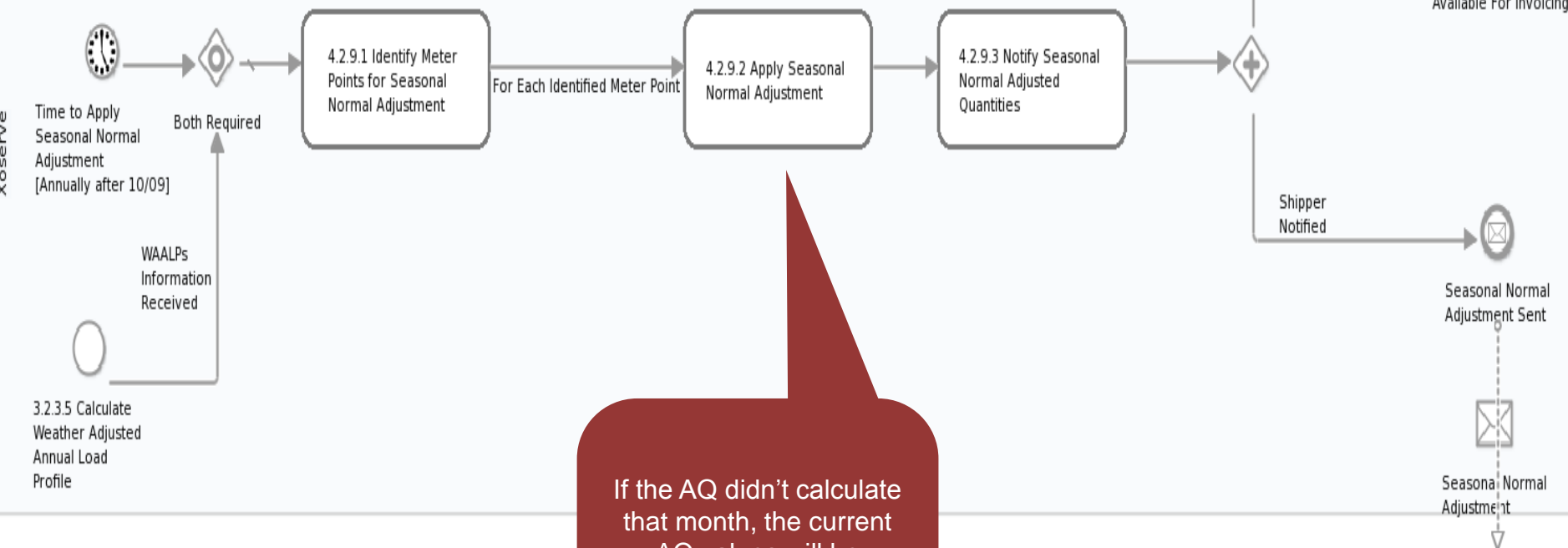
Shipper

Use the AQ correction to amend the winter consumption if appropriate.

# Apply Seasonal Normal Changes to AQ

If a Supply Meter Point is calculated within the month, it will use the seasonal normal value within that calculation.

To apply the new Seasonal Normal values the old value will be end dated and the new value applied within the System.



As part of the AQ review for 2015 the seasonal normal values will be applied with effect from 1<sup>st</sup> October 2015.

If the AQ didn't calculate that month, the current AQ values will be adjusted to reflect the seasonal normal. And notified as per the current process, via the T04 file at [M-5].

The AQ will be effective from the first of each month.

Shipper

AQ correction will be initiated with a submission of an AQ correction (new file format).

BRD Ref – 8.6

Validation will not be applied to the users estimate of their annual quantity.

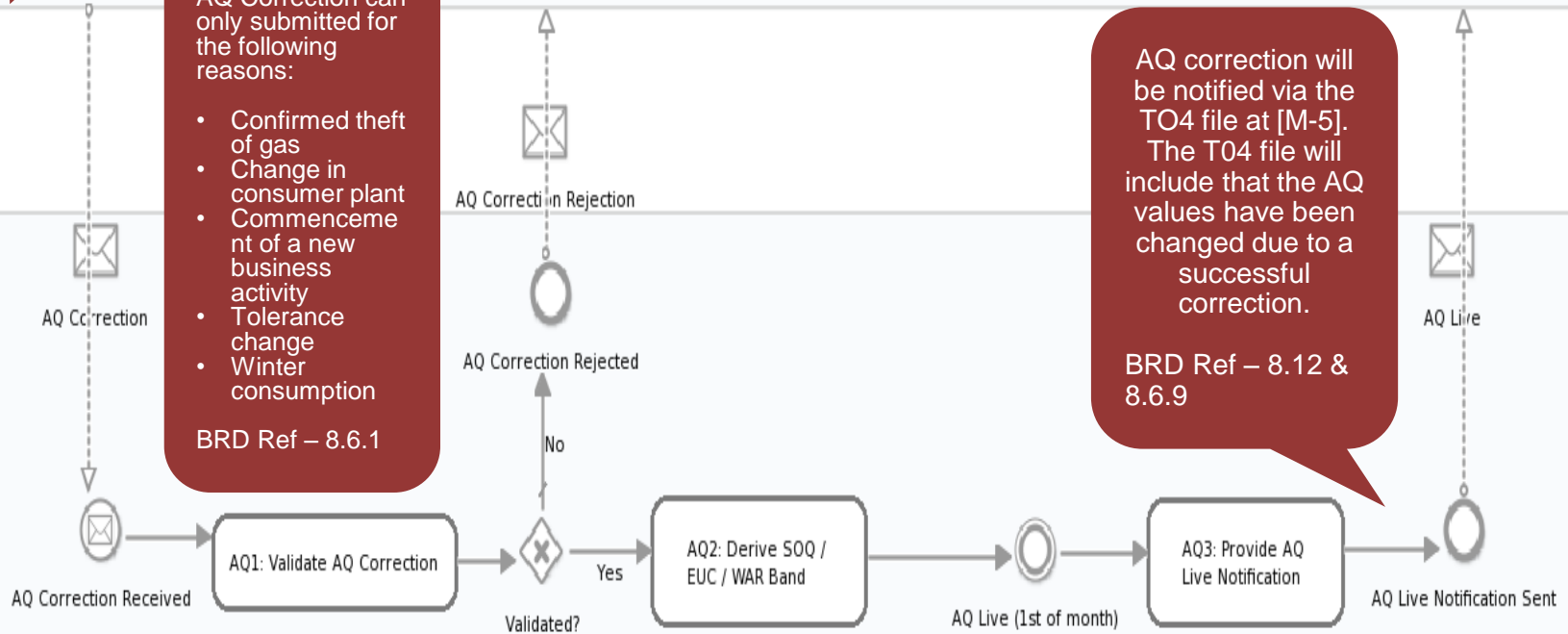
AQ Correction can only be submitted for the following reasons:

- Confirmed theft of gas
- Change in consumer plant
- Commencement of a new business activity
- Tolerance change
- Winter consumption

BRD Ref – 8.6.1

AQ correction will be notified via the TO4 file at [M-5]. The TO4 file will include that the AQ values have been changed due to a successful correction.

BRD Ref – 8.12 & 8.6.9



If the correction takes the AQ into a new EUC then any outstanding offers will be replaced/updated by the Offer Addendum.

A change in AQ due to the Correction Process will review the billable attributes.

BRD Ref – 8.6.10

A Back Stop date will be applied following AQ Correction. Therefore the AQ cannot be changed for a minimum of 9 months after this date (depending on reads).

BRD Ref – 8.6.7

Xoserve