

# Network Code Operations Reporting Manual

Version 6.0

## REVIEW HISTORY

| <b>DATE OF REVIEW</b> | <b>OUTCOME OF REVIEW</b>   |
|-----------------------|--|
| 1997                  | Version 1.0 – NCOR Manual created and sent to shippers.  |
| 01/06/2001            | Version 3.0 – Amendments to NORM06 and NORM12 reports.   |
| 22/04/2005            | Version 4.0 – NCOR Manual first published to National Grid Web Site. Screenshots and definitions updated where necessary (full review of document undertaken). |
| 01/03/2006            | Version 5.0 – Company name change to National Grid and AT Link replaced by Gemini – some changes to definitions and screenshots.                               |
| Oct 2007              | Version 6.0 – Change to incorporate the Data Dictionary developed as part of UNC Review Group 0140   |



# CONTENTS

| Section : | Title:          | Version: |
|-----------|-----------------|----------|
| 1         | Introduction    | 6.0      |
| 2         | Background      | 6.0      |
| 3         | Modifications   | 6.0      |
| 4         | Report Index    | 6.0-     |
| 5         | Report Formats  | 6.0      |
| 6.        | Data Dictionary | 6.0      |

## **1. INTRODUCTION**

This is the document referred to in TPD section V9.4.2 of the Uniform Network Code (“The Code”).

The purpose of this document ( “The Reporting Manual”) is to define the various data items that will be published by National Grid NTS.

National Grid NTS will use reasonable endeavours to ensure that all data items are updated in line with the frequency defined within the Data Dictionary section of this document however it should be noted that in a number of cases the data does not originate from National Grid NTS and National Grid NTS is reliant on a 3<sup>rd</sup> party providing it with the data.

The Reporting Manual also sets out the procedure for modifications to the data or reports and the distribution to those reports.

Operational Data as described in the Data Dictionary will be published on the Information Exchange Website. Monthly reports containing Shipper specific information will be published in the Lotus Notes Shipper Information Service database (SIS).

This document does not form a part of the “Code”.

## **2. BACKGROUND**

Following a series of consultations between National Grid NTS, Shippers, 3<sup>rd</sup> Parties and Ofgem the requirement that National Grid NTS provide certain operational data via the internet and a number of operational reports to Shippers, has been included in the “Code”.

The scope of and the definitions for the Data Items to be published on the internet is included within the Data Dictionary section of this Reporting Manual. The format and content of the Shipper Specific reports is also set out in this Reporting Manual. This Reporting Manual has been developed by National Grid in consultation with Shippers, 3<sup>rd</sup> Parties and Ofgem and revised as part of UNC

Review Group 0140.

The information contained in these reports (“the Information”) and the data items published via the internet is made available as an information service only and National Grid NTS do not assume any responsibility for the accuracy of or the content of the Information including without limitation, any delay that may occur in making available the Information. National Grid NTS does not assume any responsibility for the variation, amendment, modification or any other alteration to the Information subsequent to its receipt by Shippers or 3<sup>rd</sup> Parties.

The Information contained in the reports is not in substitution of that information provided to Users for the purposes of determining amounts payable by Users to National Grid NTS, or by National Grid NTS to Users in accordance with the Code and the format, content and frequency of the Reports have been developed for information purposes only and not for use by User's for financial analysis purposes or the audit of amounts payable to National Grid NTS.

### **3. MODIFICATION**

National Grid NTS and the Uniform Network Code Committee or any relevant Sub Committee will meet to discuss modifications to this Report Manual as required and National Grid NTS will consider revisions to the Reporting Manual in the light of these discussions. All modifications will also be presented to the UK Link committee for information only.

### **4. REPORTS**

#### **4.1 Shipper Operations Reports**

(These reports contain Shipper specific information and are made available to Shippers only via the Lotus Notes based Shipper Information Service (SIS).)

Daily reports

SORD01 Daily Imbalance Report

## Monthly reports

SORM02 Input Scheduling  
SORM03 Output Scheduling  
SORM05 Shipper Imbalance  
SORM06 Daily Cashout Quantities  
SORM16 Monthly Balance Financial Position  
SORM24 Balancing Neutrality  
SORM25 Entry Capacity Booking  
SORM26 Extent of Capacity Trading  
SORM31 NTS Exit Capacity Booking

## **5. REPORT FORMATS:**

See individual attachments.

## SHIPPER OPERATIONS REPORT FORMAT DESCRIPTION.

**Report No:** SORD01 **Area of Reporting:** Shipper Operations

**Title of Report:** Daily Imbalance Table.

### 1. Brief Description:

This report shows the shipper's percentage imbalances net of NDM forecast deviation for each gas flow day. The community average, highest and lowest scores are shown for comparison purposes.

The recipient of the report will be able to see their position in the table. However, they will not know the identities of other shippers in the table. The report will include legacy contracts and National Grid accounts.

The aim of the table is to enable shippers to compare their balancing performance to other shippers on each gas flow day.

### 2. Details:

The Imbalance amount is calculated as (Inputs-Outputs), taking account of trades but not OCM bids, and net of NDM forecast deviation if it is favourable to the shipper. The imbalance percentage is the imbalance amount divided by throughput as defined in the Network Code. i.e  $(\text{Inputs} + \text{Outputs})/2$ . The NDM forecast deviation is calculated as the difference between the end of day NDM renomination (on D) and the NDM allocation (on D+5).

This table is based on default input allocations, therefore the imbalance figures shown are subject to change when actual allocation figures are available at M+15.

The lowest, average (arithmetic mean) and highest imbalance percentages are shown for comparison purposes.

### 3. Distribution:

The report will be available daily in the Shipper Information Service Database at D+7.

### 4. Production Schedule:

This report will be generated for each gas flow day and will be made available on the Shipper Information Service on D+7.



# Shipper Community Daily Imbalance Table

For Gas Day:

| Shipper   | Abs % Imbalance |
|-----------|-----------------|
| Shipper1  | 0.00            |
| Shipper2  | 0.00            |
| Shipper3  | 0.00            |
| Shipper4  | 0.00            |
| Shipper5  | 0.00            |
| Shipper6  | 0.00            |
| Shipper7  | 0.00            |
| Shipper8  | 0.00            |
| Shipper9  | 0.00            |
| Shipper10 | 0.00            |
| Shipper11 | 0.00            |
| Shipper12 | 0.00            |
| Shipper13 | 0.00            |
| Shipper14 | 0.00            |
| Shipper15 | 0.07            |
| Shipper16 | 0.10            |
| Shipper17 | 0.11            |
| Shipper18 | 0.15            |
| Shipper19 | 0.18            |
| Shipper20 | 0.20            |
| Shipper21 | 0.25            |
| Shipper22 | 0.26            |
| Shipper23 | 0.29            |
| Shipper24 | 0.32            |
| Shipper25 | 0.34            |
| Shipper26 | 0.40            |
| Shipper27 | 0.42            |
| Shipper28 | 0.49            |
| Shipper29 | 0.57            |
| Shipper30 | 0.58            |
| Shipper31 | 0.76            |
| Shipper32 | 0.77            |
| Shipper33 | 0.88            |
| Shipper34 | 1.10            |
| Shipper35 | 1.10            |
| Shipper36 | 1.25            |
| Shipper37 | 1.26            |
| Shipper38 | 1.55            |
| Shipper39 | 2.45            |
| Shipper40 | 2.54            |
| Shipper41 | 2.62            |
| Shipper42 | 2.67            |

| Shipper   | Abs % Imbalance |
|-----------|-----------------|
| Shipper43 | 2.79            |
| Shipper44 | 2.91            |
| Shipper45 | 3.55            |
| Shipper46 | 3.60            |
| Shipper47 | 4.11            |
| Shipper48 | 5.38            |
| Shipper49 | 6.60            |
| Shipper50 | 5.72            |
| Shipper51 | 5.72            |
| Shipper52 | 6.82            |
| Shipper53 | 7.00            |
| Shipper54 | 7.85            |
| Shipper55 | 9.30            |
| Shipper56 | 9.30            |
| Shipper57 | 9.78            |
| Shipper58 | 10.99           |
| Shipper59 | 12.18           |
| Shipper60 | 13.75           |
| Shipper61 | 20.39           |
| Shipper62 | 25.65           |
| Shipper63 | 28.54           |
| Shipper64 | 29.71           |
| Shipper65 | 31.24           |
| Shipper66 | 54.42           |
| Shipper67 | 117.82          |
| Shipper68 | 119.68          |
| Shipper69 | 182.15          |
| Shipper70 | 194.75          |
| Shipper71 | 195.04          |
| Shipper72 | 195.45          |
| Shipper73 | 198.97          |
| Shipper74 | 200.00          |
| Lowest    | 0.00            |
| Average   | 29.99           |
| Highest   | 200.00          |

The Imbalance figures are Net of the NDM deviation.

## **SHIPPER OPERATIONS REPORT FORMAT DESCRIPTION.**

**Report No:** SORM02    **Area of Reporting:** Shipper Operations.

**Title of Report:** Input Scheduling Report.

### **1. Brief Description:**

This report shows the difference between the nominated and allocated gas flows and the Scheduling Charge incurred for each day of a month for a given Input Terminal.

It is used to monitor a shipper's ability to deliver into an Input Point according to its nominated quantity.

### **2. Details:**

The Scheduling difference is calculated from the Shipper's Renomination less Allocation figures for all sub-terminal inputs into that Terminal. This difference is then subject to 3 and 5 % tolerance levels. The tolerance levels are calculated as 3 and 5 percent of the renomination figure.

Any amount of the scheduling difference that exceeds the 3 percent inner tolerance up to the 5 % outer tolerance is charged at 2 % of the System Average Price (SAP) on the given day. Any amount of the difference that exceeds the 5 % outer tolerance level will be charged at 5 % of the SAP price.

The Scheduling quantities that exceed the inner (3 %) tolerance level are shown together with the daily Input Scheduling Charge.

The Community Total Input Scheduling Charges are shown daily and monthly for comparison purposes.

### **3. Distribution:**

This report will be available on the Shipper Information Service Database each month at M+30.

### **4. Production Schedule:**

The report will be generated and published to the Shipper Information service database by M+30.

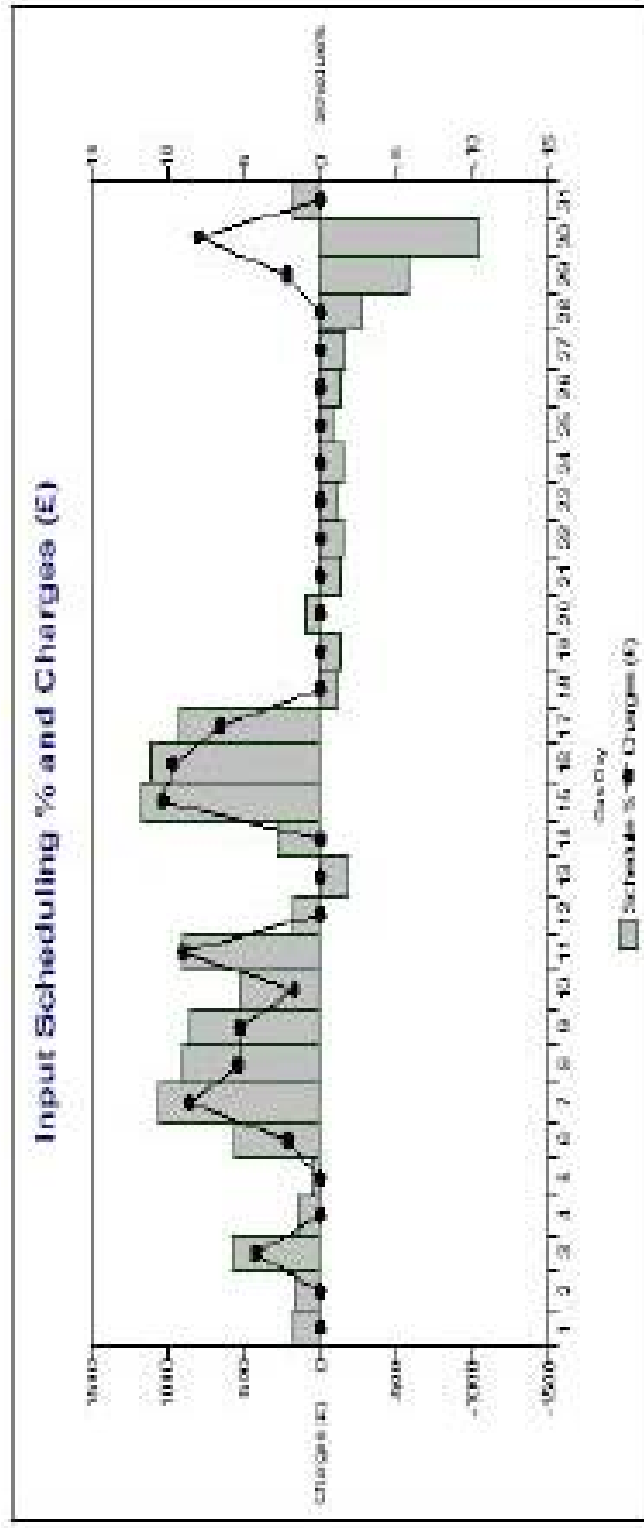


TERMINAL 1

SHIPPER A

| Bus Day | Reservations<br>(A) | Allocations<br>(B) | Scheduling<br>Qty (C) | Scheduling %<br>(D) | Tolerance<br>(E)           | Tolerance<br>(F)   | Scheduling<br>Qty (G) | Change<br>(H) | Community<br>Total<br>Change |
|---------|---------------------|--------------------|-----------------------|---------------------|----------------------------|--------------------|-----------------------|---------------|------------------------------|
|         |                     |                    | $C = B \cdot A$       | $D = C \cdot 100A$  | $E = A \cdot 7 \cdot 0.01$ | $F = A \cdot 0.05$ | $G = C \cdot E$       |               |                              |
| 1       | 52,947,890          | 53,933,835         | 983,945               | 1.88                | 1,588,437                  | 2,347,395          | 0                     | 0.00          | 7,967.57                     |
| 2       | 42,576,803          | 43,207,690         | 631,887               | 1.48                | 1,277,504                  | 2,128,800          | 0                     | 0.00          | 5,945.73                     |
| 3       | 53,487,973          | 54,081,905         | 3,083,962             | 5.76                | 1,604,936                  | 2,374,894          | 1,438,423             | 4.2274        | 3,744.45                     |
| 4       | 45,841,306          | 46,388,413         | 647,047               | 1.41                | 1,378,241                  | 2,257,058          | 0                     | 0.00          | 4,487.43                     |
| 5       | 39,772,856          | 39,962,674         | 239,838               | 0.60                | 1,191,368                  | 1,898,843          | 0                     | 0.00          | 6,176.98                     |
| 6       | 31,265,648          | 33,003,304         | 1,238,746             | 3.96                | 607,608                    | 1,503,252          | 888,777               | 212.63        | 3,888.63                     |
| 7       | 28,053,433          | 31,074,348         | 2,580,976             | 10.03               | 841,003                    | 1,401,672          | 2,135,912             | 980.36        | 4,533.19                     |
| 8       | 22,607,783          | 24,544,854         | 2,036,871             | 9.07                | 678,203                    | 1,130,389          | 1,368,538             | 541.41        | 5,788.27                     |
| 9       | 24,676,416          | 26,904,459         | 2,428,040             | 9.82                | 210,366                    | 1,233,841          | 1,287,735             | 623.00        | 4,162.66                     |
| 10      | 52,379,737          | 54,100,528         | 1,723,791             | 3.35                | 591,862                    | 1,118,587          | 752,399               | 169.18        | 8,944.26                     |
| 11      | 38,972,075          | 42,469,016         | 3,496,941             | 8.98                | 1,358,167                  | 1,848,694          | 2,337,779             | 902.70        | 5,219.00                     |
| 12      | 26,468,204          | 36,162,411         | 604,167               | 1.75                | 1,454,000                  | 1,425,467          | 0                     | 0.00          | 7,567.54                     |
| 13      | 63,375,341          | 62,217,289         | -1,158,052            | -1.82               | 1,501,200                  | 3,168,767          | 0                     | 0.00          | 7,481.76                     |
| 14      | 59,076,572          | 60,746,651         | 1,668,078             | 2.82                | 1,772,207                  | 2,463,729          | 0                     | 0.00          | 3,118.48                     |
| 15      | 26,906,893          | 32,324,247         | 5,417,456             | 11.62               | 467,507                    | 1,446,246          | 2,650,349             | 1,023.83      | 6,528.54                     |
| 16      | 29,789,892          | 33,109,295         | 3,396,373             | 11.76               | 693,968                    | 1,488,943          | 2,472,407             | 993.39        | 8,322.46                     |
| 17      | 27,078,264          | 28,074,030         | 2,495,432             | 9.22                | 493,376                    | 1,353,860          | 1,683,856             | 657.54        | 7,829.59                     |
| 18      | 16,006,217          | 16,245,706         | -69,489               | -1.24               | 1,678,000                  | 2,196,707          | 0                     | 0.00          | 3,689.76                     |
| 19      | 45,949,213          | 44,842,740         | -606,473              | -1.32               | 1,308,419                  | 2,377,401          | 0                     | 0.00          | 5,306.73                     |
| 20      | 46,188,243          | 47,228,710         | 436,565               | 0.94                | 1,833,647                  | 2,239,412          | 0                     | 0.00          | 3,569.13                     |
| 21      | 51,074,000          | 51,868,770         | -307,210              | -1.36               | 1,658,594                  | 2,188,704          | 0                     | 0.00          | 6,128.11                     |
| 22      | 59,071,701          | 58,207,699         | -864,002              | -1.46               | 1,772,101                  | 2,858,295          | 0                     | 0.00          | 6,376.43                     |
| 23      | 62,077,942          | 61,771,285         | -306,657              | -1.26               | 1,677,357                  | 3,158,890          | 0                     | 0.00          | 8,880.23                     |
| 24      | 64,571,790          | 63,506,432         | -94,358               | -1.47               | 1,616,364                  | 2,326,660          | 0                     | 0.00          | 9,764.00                     |
| 25      | 62,065,149          | 61,537,388         | -527,761              | -0.85               | 1,681,864                  | 3,105,297          | 0                     | 0.00          | 6,379.79                     |
| 26      | 61,676,331          | 60,673,798         | -1,002,533            | -1.30               | 1,650,280                  | 3,493,817          | 0                     | 0.00          | 9,323.66                     |
| 27      | 52,816,206          | 51,868,154         | -948,052              | -1.67               | 1,484,866                  | 2,446,760          | 0                     | 0.00          | 7,069.60                     |
| 28      | 46,261,908          | 45,102,294         | -1,159,614            | -2.70               | 1,209,597                  | 2,211,295          | 0                     | 0.00          | 5,475.45                     |
| Totals  | 1,379,100,615       | 1,398,901,199      | 46,482,279            | 3.35                |                            |                    |                       | 7,315.35      | 189,793.33                   |

| Gas Day | Remingtons (MM) (A) | Allocations (MM) (B) | Scheduling DR (MM) (C) = B - A | Scheduling % (D) = C / 10,000 | Volume (MM) (E) = A * D | Volume (MM) (F) = A * D * E | Subsiding DR (MM) (G) = C - E | Flows (MM) (H) = F + G | Commodity Total Change |
|---------|---------------------|----------------------|--------------------------------|-------------------------------|-------------------------|-----------------------------|-------------------------------|------------------------|------------------------|
| 29      | 26,210,000          | 27,540,000           | 1,330,000                      | 13.3%                         | 3,487,620               | 1,460,877                   | 869,123                       | 2,118,500              | 8,000,000              |
| 30      | 26,400,000          | 25,800,000           | 2,700,000                      | 27.0%                         | 7,164,000               | 1,320,400                   | 1,379,600                     | 800,000                | 8,162,000              |
| 31      | 5,400,000           | 55,000,000           | 1,200,000                      | 12.0%                         | 64,800,000              | 2,740,000                   | 0                             | 1,000                  | 2,000,000              |
| Totals  | 37,010,000          | 1,200,000            | 40,210,000                     | 402.1%                        | 1,200,000               | 1,200,000                   | 0                             | 1,200,000              | 180,000,000            |



## SHIPPER OPERATIONS REPORT FORMAT DESCRIPTION

**Report No:** SORM05    **Area of Reporting:** Shipper  
Operations

**Title of Report:** Shipper Imbalance

### 1. Brief Description:

This report shows the shipper's percentage imbalance net of NDM forecast deviation for each gas flow day in the month.

The aim of the table is to enable the shipper to compare their balancing performance with the rest of the shipper community over a month.

### 2. Details:

The report shows the shipper's total input and output allocations. The NDM forecast deviation is calculated as the difference between the end of day NDM renomination (on D) and the NDM allocation (on D+1).

The imbalance quantity is calculated as the difference between the input and output allocation less the NDM deviation. The imbalance quantity is expressed as a percentage of average throughput, calculated as the sum of total inputs and total outputs divided by two.

The community average imbalance percentage on the day is shown for comparison purposes. Also shown are the shipper and community average imbalance percentages for the month.

### 3. Distribution:

The report will be available on the Shipper Information Service database each month at M+30.

### 4. Production Schedule:

The report will be generated and published to the Shipper Information Service database by M+30.

# Shipper Imbalance

**SHIPPER A**

January 2015

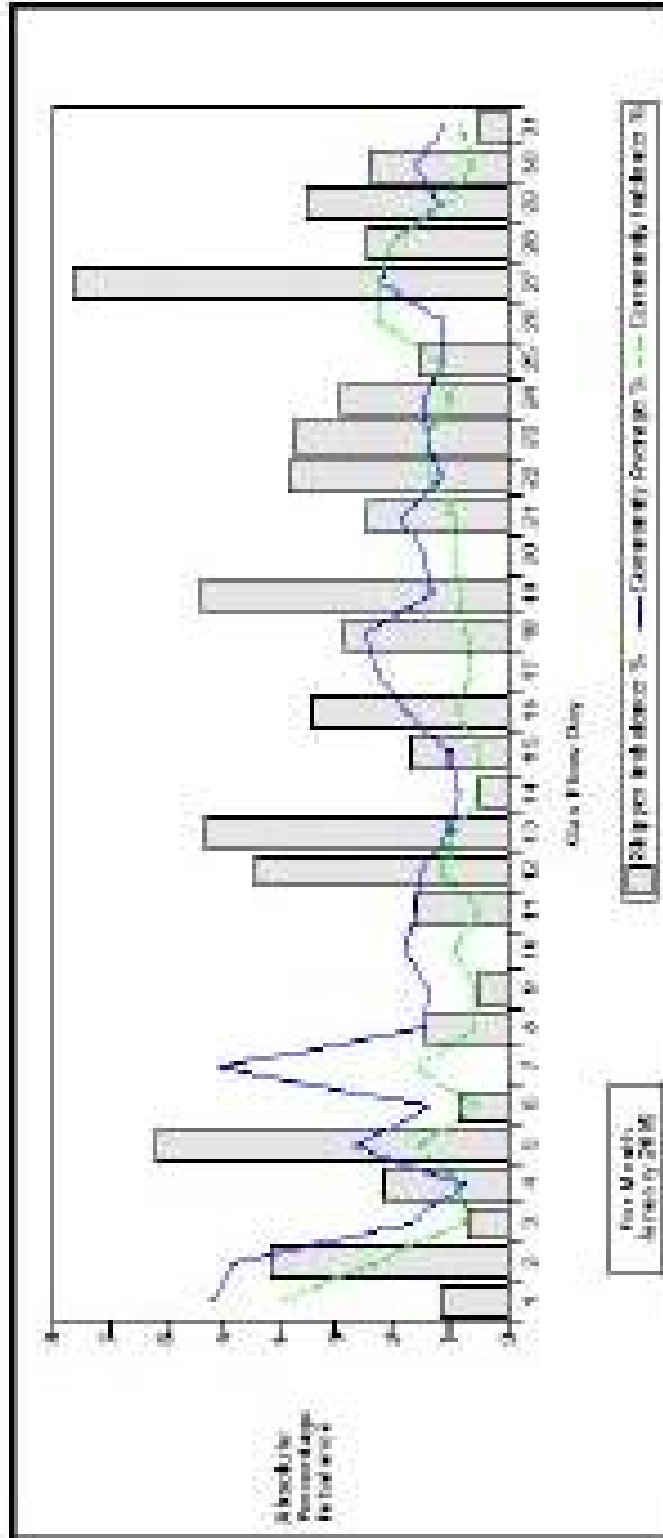
| Gas Day        | Inputs (MMBtu) | Outputs (MMBtu) | HOB Fuel Derivation (MMBtu) | Injection/Qty (L) (MMBtu Fuel Derivation (MMBtu)) | Abx % Imbalance | Commodity Imbalance % | Commodity Avg % |
|----------------|----------------|-----------------|-----------------------------|---|-----------------|-----------------------|-----------------|
| 1              | 153,718,981    | 22,711,215      | 167,110                     | 22,652,268  | 1.12            | 3.36                  | 0.21            |
| 2              | 153,718,981    | 21,022,177      | 16,434                      | -7,138,806  | 4.11            | 2.21                  | 4.41            |
| 3              | 145,000,000    | 21,000,000      | 27,814                      | -1,246,388  | 0.75            | 0.75                  | 1.75            |
| 4              | 201,117,307    | 26,533,547      | 300,856                     | -2,242,376  | 2.14            | 0.83                  | 0.41            |
| 5              | 243,420,000    | 99,000,000      | -200,110                    | 12,662,801  | 5.13            | 1.83                  | 2.62            |
| 6              | 209,528,710    | 391,479,724     | 65,979                      | -1,752,811  | 0.82            | 0.87                  | 1.35            |
| 7              | 205,381,818    | 189,279,243     | 8,483                       | -20   | 0.08            | 1.87                  | 0.07            |
| 8              | 167,220,101    | 165,642,001     | 125,000                     | 2,725,356   | 1.43            | 0.53                  | 1.43            |
| 9              | 189,827,019    | 213,288,288     | -24,888                     | -7,148,888  | 0.68            | 0.68                  | 1.38            |
| 10             | 243,400,000    | 303,075,322     | 42,380                      | -15   | 0.06            | 0.83                  | 1.75            |
| 11             | 200,347,200    | 200,089,577     | 65,052                      | -2,438,406  | 1.09            | 0.53                  | 1.52            |
| 12             | 276,248,117    | 291,288,908     | 8,181                       | 2,212,291   | 4.47            | 1.11                  | 1.49            |
| 13             | 200,000,000    | 203,021,284     | 267,188                     | 17,622,284  | 0.22            | 0.88                  | 1.03            |
| 14             | 243,015,000    | 343,019,006     | 61,783                      | -1,157,817  | 0.55            | 0.55                  | 0.62            |
| 15             | 245,000,000    | 300,000,000     | -11,527                     | -3,065,807  | 1.64            | 0.57                  | 1.05            |
| 16             | 200,040,000    | 300,000,000     | -10,000                     | -7,000,000  | 0.41            | 0.81                  | 1.72            |
| 17             | 200,217,000    | 300,048,314     | 74,523                      | 0   | 0.08            | 0.83                  | 2.24            |
| 18             | 200,200,000    | 213,288,844     | 32,417                      | 2,427,844   | 2.88            | 0.73                  | 2.05            |
| 19             | 221,220,000    | 182,288,243     | 19,175                      | -17,615,416                                       | 5.43            | 0.87                  | 1.26            |
| 20             | 225,220,000    | 342,000,344     | -10,440                     | -20   | 0.09            | 0.82                  | 1.43            |
| 21             | 200,000,000    | 185,135,717     | 85,485                      | -5,008,241  | 2.45            | 0.94                  | 1.81            |
| 22             | 204,400,000    | 173,004,000     | 163,800                     | -7,692,406  | 3.60            | 1.31                  | 1.44            |
| 23             | 244,017,000    | 300,078,000     | 80,117                      | -5,007,500  | 3.14            | 1.18                  | 1.36            |
| 24             | 247,800,000    | 283,122,000     | 200,818                     | 2,602,200   | 2.82            | 1.43                  | 1.43            |
| 25             | 253,004,272    | 204,022,601     | 162,125                     | -2,477,504  | 1.52            | 1.21                  | 1.10            |
| 26             | 243,140,000    | 300,105,000     | 210,910                     | -50   | 0.09            | 2.24                  | 1.07            |
| 27             | 200,000,000    | 200,000,000     | 84,820                      | 0   | 3.68            | 2.31                  | 2.17            |
| 28             | 200,000,000    | 300,440,000     | 63,220                      | -5,224,000  | 3.41            | 2.81                  | 2.05            |
| 29             | 200,110,000    | 200,000,000     | 17,887                      | -7,138,814  | 3.68            | 1.84                  | 1.14            |
| 30             | 200,110,000    | 201,000,000     | -81,301                     | 2,800,801   | 2.43            | 0.83                  | 1.86            |
| 31             | 191,004,274    | 200,000,000     | 80,024                      | 1,000,000   | 0.58            | 0.84                  | 1.00            |
| <b>Average</b> |                |                 |                             |   | <b>3.58</b>     | <b>1.18</b>           | <b>1.25</b>     |

Commodity Avg % does not include losses in gas.  
 Volume Avg % includes losses in gas.

# Shipper Imbalance Percentage

January 2005

SHIPPER A



Note: Community Imbalance % is the arithmetic mean of all shipper imbalance %'s in a day.  
 Community Imbalance % = 100 \* (sum of absolute shipper imbalance %'s) / (sum of shipper throughput)



## SHIPPER OPERATIONS REPORT FORMAT DESCRIPTION

**Report Nos:** SORM06    **Area of Reporting:** Shipper  
Operations

**Title of Report:** Daily Cashout Quantities Report

### 1. Brief Description:

This report shows the amounts of the Shipper's imbalance quantity that exist within given tolerances and are subject to charges or payments.

It can be used to monitor the frequency and magnitude of imbalances that are cashed out.

### 2. Details:

The table in the report shows - on a daily basis - the Imbalance Quantity, the Imbalance Tolerance Quantity [ITQ] (both with and without the NDM Forecast Deviation), Cashout Quantities (for the two Phase 2 Imbalance Tranches), Payments or Charges, and finally the Community Total Payments and Charges for comparison purposes. It also gives the Absolute Tolerance Quantity [ATQ], which is currently set at 0 kWh for all Shippers. Prior to ATQ being set to 0 kWh on 1<sup>st</sup> April 2001, ATQ was set at 219600 kWh for all shippers.

The ITQ is now set to zero and therefore the ITQ inc. Fcast. Deviation column is always zero. No imbalances are now cashed out at SAP (SMP's are always used) and therefore the 1<sup>st</sup> Tranche @ SAP Qty column is also always zero.

If the imbalance is positive (i.e. the Shipper has delivered more gas into the system than they have taken out), then the additional gas is bought by National Grid. This gas falls into the Second Imbalance Tranche and is bought at the System Marginal Price [SMP] sell price for the day. This is shown as a payment to the Shipper.

If the imbalance is negative (i.e. the Shipper has under delivered into the system so their outputs are greater than their inputs), then the additional gas is sold by National Grid. This gas is sold at the System Average Price [SAP] for that day. This is shown as a charge to the Shipper.

### 3. Distribution:

The report will be available on the Shipper Information Service database each month at M+30.

**4. Production Schedule:**

The report will be generated and published to the Shipper Information Service database by M+30.

**Daily Cashout Quantities**

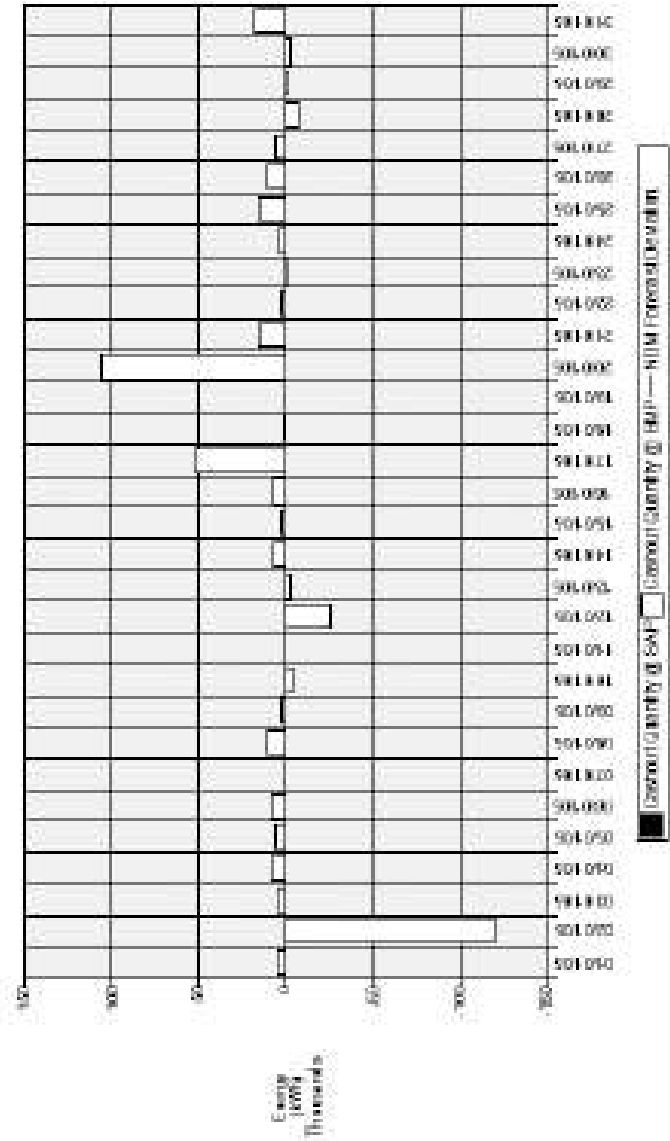
January 2005

SHIPLEX 4  
ATO Value = 1 MBH

| Case Day | Imbalance Qty (MBH) | ITQ vs. MCM Quantification (MBH) | MCM Feed Deviation (MBH) | ITQ vs. MCM Feed Deviation (MBH) | 1st Tranche (500 Qty (MBH)) | 2nd Tranche (500 Qty (MBH)) | Change / Payment (¢) | Comm Total Payments (¢) | Comm Total Charges (¢) |
|----------|---------------------|----------------------------------|--------------------------|----------------------------------|-----------------------------|-----------------------------|----------------------|-------------------------|------------------------|
| 01       | 382,258             | 0                                | 0                        | 0                                | 0                           | 382,258                     | 0.004                | 175,234                 | 374,402                |
| 02       | (11,944,779)        | 0                                | 0                        | 0                                | 0                           | (11,944,779)                | 03.352               | (106,600)               | 614,574                |
| 03       | 373,638             | 0                                | 0                        | 0                                | 0                           | 373,638                     | 0.006                | 620,500                 | 218,009                |
| 04       | 700,864             | 0                                | 0                        | 0                                | 0                           | 700,864                     | 0.001                | (341,944)               | 167,237                |
| 05       | 640,666             | 0                                | 0                        | 0                                | 0                           | 640,666                     | 0.004                | (68,771)                | 602,967                |
| 06       | 700,657             | 0                                | 0                        | 0                                | 0                           | 700,657                     | 0.001                | (172,000)               | 65,409                 |
| 07       | 4,900               | 0                                | 0                        | 0                                | 0                           | 4,900                       | 0.001                | 652,600                 | 17,762                 |
| 08       | 608,757             | 0                                | 0                        | 0                                | 0                           | 608,757                     | 0.003                | (73,361)                | 441,049                |
| 09       | 238,447             | 0                                | 0                        | 0                                | 0                           | 238,447                     | 0.214                | (105,600)               | 60,227                 |
| 10       | (600,004)           | 0                                | 0                        | 0                                | 0                           | (600,004)                   | 4.405                | (557,000)               | 20,000                 |
| 11       | (44,174)            | 0                                | 0                        | 0                                | 0                           | (44,174)                    | 0.001                | (27,600)                | 288,583                |
| 12       | (2,407,624)         | 0                                | 0                        | 0                                | 0                           | (2,407,624)                 | 24.671               | (138,200)               | 345,407                |
| 13       | (410,010)           | 0                                | 0                        | 0                                | 0                           | (410,010)                   | -4.528               | (406,000)               | 318,000                |
| 14       | 627,315             | 0                                | 0                        | 0                                | 0                           | 627,315                     | 0.003                | (212,000)               | 166,000                |
| 15       | 198,254             | 0                                | 0                        | 0                                | 0                           | 198,254                     | 0.002                | (113,000)               | 162,500                |
| 16       | 608,408             | 0                                | 0                        | 0                                | 0                           | 608,408                     | 0.001                | (228,000)               | 170,470                |
| 17       | 6,172,185           | 0                                | 0                        | 0                                | 0                           | 6,172,185                   | (45.001)             | (33,500)                | 23,621                 |
| 18       | 83,722              | 0                                | 0                        | 0                                | 0                           | 83,722                      | 0.001                | (18,400)                | 275,200                |
| 19       | 16,400              | 0                                | 0                        | 0                                | 0                           | 16,400                      | 0.001                | (14,900)                | 284,901                |
| 20       | (1,662,066)         | 0                                | 0                        | 0                                | 0                           | (1,662,066)                 | (46.100)             | (221,000)               | 266,000                |
| 21       | 1,428,014           | 0                                | 0                        | 0                                | 0                           | 1,428,014                   | (13.000)             | (504,200)               | 83,900                 |
| 22       | 174,275             | 0                                | 0                        | 0                                | 0                           | 174,275                     | 0.002                | (67,200)                | (63,500)               |
| 23       | (160,817)           | 0                                | 0                        | 0                                | 0                           | (160,817)                   | 1.000                | (468,300)               | 261,000                |
| 24       | 342,152             | 0                                | 0                        | 0                                | 0                           | 342,152                     | 0.001                | 622,100                 | 264,101                |
| 25       | 1,433,831           | 0                                | 0                        | 0                                | 0                           | 1,433,831                   | (15.000)             | (228,700)               | 167,001                |
| 26       | 919,666             | 0                                | 0                        | 0                                | 0                           | 919,666                     | 0.001                | (110,600)               | 111,274                |
| 27       | 525,607             | 0                                | 0                        | 0                                | 0                           | 525,607                     | 0.004                | (258,000)               | 373,400                |
| 28       | (634,200)           | 0                                | 0                        | 0                                | 0                           | (634,200)                   | 8.200                | (60,700)                | 249,307                |
| 29       | (160,000)           | 0                                | 0                        | 0                                | 0                           | (160,000)                   | 7.400                | (129,000)               | 317,004                |
| 30       | (200,100)           | 0                                | 0                        | 0                                | 0                           | (200,100)                   | 3.100                | (46,200)                | 218,107                |
| 31       | 1,726,200           | 0                                | 0                        | 0                                | 0                           | 1,726,200                   | (15.100)             | (26,600)                | 30,000                 |
| Total    |                     |                                  |                          |                                  |                             |                             | (200.600)            | (42,625,400)            | 67,522,100             |

January 2005

Daily Imbalance & Tolerance (kWh)  
300228.A



## SHIPPER OPERATIONS REPORT FORMAT DESCRIPTION

**Report Nos:** SORM16    **Area of Reporting:** Shipper  
Operations

**Title of Report:** Monthly Balance Financial Position

### **1. Brief Description:**

This report shows individual shippers key financial indicators throughout the month. It can be used to monitor the shippers exposure to energy balancing shippers charges.

### **2. Details:**

The report shows the shipper's daily charges and payments: imbalance cashout, cumulative imbalance cashout, scheduling charges, unauthorised gas flow charges and payments, and PRI charges. The net total daily charge or payment is calculated.

The report also shows the shipper's month end charges and payments: month end cumulative imbalance cashout, and basic neutrality charges.

The grand total charge or payment is calculated.

### **3. Distribution:**

This report will be available on the Shipper Information Service each month at M+30.

### **4. Production Schedule:**

The report will be generated and published to the Shipper Information Service database by M+30.

## Monthly Financial Position

01/12/2005 to 31/12/2005

| Case Day     | Charities balance<br>Carroll at the<br>Shippings | Daily Balance<br>Carroll at the<br>National Car<br>Class | Carroll Income<br>Change(s) | Carroll<br>Change(s) | Carroll<br>Change(s) | Carroll<br>Change(s) | Carroll<br>Change(s) | Carroll<br>Change(s) |
|--------------|--|--|-----------------------------|----------------------|----------------------|----------------------|----------------------|----------------------|
| 1            | 0  | 130,124  | 0                           | 0                    | 0                    | 0                    | 0                    | 0                    |
| 2            | (60,850)   | 0  | (4,037)                     | 0                    | 0                    | 0                    | 0                    | 0                    |
| 3            | (58,700)   | 0  | 0                           | 0                    | 0                    | 0                    | 0                    | 0                    |
| 4            | (61,850)   | 0  | 0                           | 0                    | 0                    | 0                    | 0                    | 0                    |
| 5            | (118,200)  | 0  | 0                           | 0                    | 0                    | 0                    | 0                    | 0                    |
| 6            | (7,200)  | 0  | 0                           | 0                    | 0                    | 0                    | 0                    | 0                    |
| 7            | 0  | 0  | 0                           | 0                    | 0                    | 0                    | 0                    | 0                    |
| 8            | 0  | 0  | 0                           | 0                    | 0                    | 0                    | 0                    | 0                    |
| 9            | 0  | 0  | 0                           | 0                    | 0                    | 0                    | 0                    | 0                    |
| 10           | 0  | 0  | 0                           | 0                    | 0                    | 0                    | 0                    | 0                    |
| 11           | 0  | 0  | 0                           | 0                    | 0                    | 0                    | 0                    | 0                    |
| 12           | 0  | 0  | 0                           | 0                    | 0                    | 0                    | 0                    | 0                    |
| 13           | 0  | 0  | 0                           | 0                    | 0                    | 0                    | 0                    | 0                    |
| 14           | 0  | 0  | 0                           | 0                    | 0                    | 0                    | 0                    | 0                    |
| 15           | 0  | 0  | 0                           | 0                    | 0                    | 0                    | 0                    | 0                    |
| 16           | 0  | 0  | 0                           | 0                    | 0                    | 0                    | 0                    | 0                    |
| 17           | 0  | 0  | 0                           | 0                    | 0                    | 0                    | 0                    | 0                    |
| 18           | 0  | 0  | 0                           | 0                    | 0                    | 0                    | 0                    | 0                    |
| 19           | 0  | 0  | 0                           | 0                    | 0                    | 0                    | 0                    | 0                    |
| 20           | 0  | 0  | 0                           | 0                    | 0                    | 0                    | 0                    | 0                    |
| 21           | 0  | 0  | 0                           | 0                    | 0                    | 0                    | 0                    | 0                    |
| 22           | 0  | 0  | 0                           | 0                    | 0                    | 0                    | 0                    | 0                    |
| 23           | 0  | 0  | 0                           | 0                    | 0                    | 0                    | 0                    | 0                    |
| 24           | 0  | 0  | 0                           | 0                    | 0                    | 0                    | 0                    | 0                    |
| 25           | 0  | 0  | 0                           | 0                    | 0                    | 0                    | 0                    | 0                    |
| 26           | 0  | 0  | 0                           | 0                    | 0                    | 0                    | 0                    | 0                    |
| 27           | 0  | 0  | 0                           | 0                    | 0                    | 0                    | 0                    | 0                    |
| 28           | 0  | 0  | 0                           | 0                    | 0                    | 0                    | 0                    | 0                    |
| 29           | 0  | 0  | 0                           | 0                    | 0                    | 0                    | 0                    | 0                    |
| 30           | 0  | 0  | 0                           | 0                    | 0                    | 0                    | 0                    | 0                    |
| 31           | 0  | 0  | 0                           | 0                    | 0                    | 0                    | 0                    | 0                    |
| <b>Total</b> | <b>(1,203,494)</b>                               | <b>1,802,480</b>   | <b>665,533</b>              | <b>97,933</b>        | <b>0</b>             | <b>0</b>             | <b>0</b>             | <b>665,533</b>       |

(61 7,534) 0

Balancing Monthly Changes  
CF Cashout/Inbalance

## SHIPPER OPERATIONS REPORT FORMAT DESCRIPTION

**Report No:** SORM24    **Area of Reporting:** Shipper  
Operations

**Title of Report:** Balancing Neutrality

### 1. Brief Description:

This report shows the balancing neutrality charges (or rebates) for the shipper for each day of the month. The report relates to the Balancing regime under Phase 2 of the Network Code.

The aim of the table is to enable the shipper to monitor the amount of balancing neutrality charges through the month.

### 2. Details:

The report shows the rate for the day (and whether the rate is capped), the shippers inputs and outputs for each day, and the resulting Balancing Neutrality charge (or rebate).

The Unit Daily Neutrality Amount is calculated as the neutrality amount for the day divided by the sum of system inputs and outputs. The neutrality amount for the day includes balancing charges or revenues, imbalance cashouts, scheduling charges, unauthorised gas flow charges and other adjustment amounts described in section 7.F 4.5.3 of the Network Code.

A flag shows whether the rate has been capped. In phase 2, the rate is capped at 0.01p/kWh where this would result in a payment to National Grid. Any shortfall is carried forward and added to the neutrality amount for the following day.

The rate is multiplied by the sum of the shipper's inputs and outputs on the day to give a charge or payment.

The total charges and payments for the month are also shown.

### 3. Distribution:

The report will be available on the Shipper Information Service Database each month at M+30.

### 4. Production Schedule:

The report will be generated and published to the Shipper Information Service at M+30.

## Balancing Neutrality

SHIPPER A

| For the Period |               | 01/01/2005 to 31/01/2005 |               |              |            |            |
|----------------|---------------|--------------------------|---------------|--------------|------------|------------|
| Gas Day        | Rate p/MWh    | Cap Flag (Y/N)           | Total Outputs | Total Inputs | Change (£) | Rebate (£) |
| 01             | 0.0029740122  | N                        | 0             | 34,195,454   | 1,016,660  | 0.00       |
| 02             | -0.0060196007 | N                        | 0             | 26,933,332   | 0.00       | -2,160.00  |
| 03             | 0.0001110068  | N                        | 0             | 25,056,205   | 28.06      | 0.00       |
| 04             | 0.0022160919  | N                        | 0             | 26,419,468   | 685.48     | 0.00       |
| 05             | -0.0000645125 | N                        | 0             | 20,676,022   | 0.00       | -2,312.50  |
| 06             | 0.0010309430  | N                        | 0             | 25,017,697   | 265.85     | 0.00       |
| 07             | 0.0000115268  | N                        | 0             | 26,598,364   | 2,394.26   | 0.00       |
| 08             | -0.0052716373 | N                        | 0             | 26,277,403   | 0.00       | -1,385.25  |
| 09             | 0.0012310191  | N                        | 0             | 25,497,279   | 313.88     | 0.00       |
| 10             | 0.0015937567  | N                        | 0             | 33,737,801   | 537.70     | 0.00       |
| 11             | -0.0037169737 | N                        | 0             | 34,126,231   | 0.00       | -1,269.22  |
| 12             | -0.0026357972 | N                        | 0             | 33,029,222   | 0.00       | -936.97    |
| 13             | 0.0016504331  | N                        | 0             | 33,468,843   | 555.39     | 0.00       |
| 14             | 0.0004666989  | N                        | 0             | 31,775,354   | 149.31     | 0.00       |
| 15             | -0.0000624092 | N                        | 0             | 30,332,957   | 0.00       | -25.00     |
| 16             | 0.00111420744 | N                        | 0             | 24,176,447   | 276.14     | 0.00       |
| 17             | 0.0034974122  | N                        | 0             | 18,258,353   | 638.57     | 0.00       |
| 18             | -0.0006011214 | N                        | 0             | 24,705,976   | 0.00       | -227.57    |
| 19             | -0.0023359664 | N                        | 0             | 27,167,803   | 0.00       | -757.64    |
| 20             | -0.010506152  | N                        | 0             | 20,010,020   | 0.00       | -211.54    |
| 21             | 0.0026539610  | N                        | 0             | 16,676,717   | 442.63     | 0.00       |
| 22             | -0.006069317  | N                        | 0             | 25,057,673   | 0.00       | -1,404.97  |
| 23             | 0.0059401508  | N                        | 0             | 25,790,294   | 1,505.19   | 0.00       |
| 24             | 0.0027605490  | N                        | 0             | 25,643,626   | 707.91     | 0.00       |
| 25             | 0.0026906200  | N                        | 0             | 20,632,190   | 744.04     | 0.00       |
| 26             | -0.009169379  | N                        | 0             | 22,713,097   | 0.00       | -1,176.79  |
| 27             | -0.0070434756 | N                        | 0             | 25,525,375   | 0.00       | -1,797.87  |
| 28             | -0.0069510817 | N                        | 0             | 30,831,207   | 0.00       | -2,759.73  |
| 29             | -0.0027257459 | N                        | 0             | 30,771,784   | 0.00       | -838.76    |
| 30             | -0.019706906  | N                        | 0             | 20,630,312   | 0.00       | -570.00    |
| 31             | 0.0034952039  | N                        | 0             | 29,589,146   | 1,034.20   | 0.00       |

## SHIPPER OPERATIONS REPORT FORMAT DESCRIPTION

**Report Nos:** SORM25    **Area of Reporting:** Shipper  
Operations

**Title of Report:** Entry Capacity Booking

### 1. Brief Description:

This report shows the shippers capacity overrun at an entry point (terminal or storage facility) during the month. It can be used to monitor the shippers overrun charges.

### 2. Details:

The report shows, by ASEP, the shippers net capacity (including Long Term Firm, Long Term Interruptible, Daily Firm, Daily Interruptible and Traded), the allocated flow, overrun quantity and overrun percentage.

Overrun quantity is the amount by which the allocated flow exceeds the net capacity on the day. The overrun quantity is also expressed as a percentage of the net capacity.

### 3. Distribution:

This report will be available on the Shipper Information Service database each month at M+30.

### 4. Production Schedule:

The report will be produced and published to the Shipper Information Service Database at M+30.



**SHIPPER A  
TERMINAL 1**

**Entry Capacity Booking**

JANUARY 2005

| Line Item    | LTB Capacity       | MT Capacity | OT Capacity | Free Trade Capacity | Nontransferable Trade Capacity | MT Capacity | MT Multi-Use       | Total Allocation   | All Rights in Use |
|--------------|--------------------|-------------|-------------|---------------------|--------------------------------|-------------|--------------------|--------------------|-------------------|
| 8100 0001    | 21 207 413         | 0           | 0           | 0                   | 0                              | 0           | 273 026 413        | 18 139 203         |                   |
| 8100 0002    | 21 815 413         | 0           | 0           | 0                   | 0                              | 0           | 273 026 413        | 18 441 000         |                   |
| 8100 0003    | 21 815 413         | 0           | 0           | 0                   | 0                              | 0           | 66 377 413         | 18 897 205         |                   |
| 8100 0004    | 21 207 413         | 0           | 0           | 8 000 000           | 0                              | 0           | 273 026 413        | 18 771 247         |                   |
| 8100 0005    | 21 815 413         | 0           | 0           | 38 000 000          | 0                              | 0           | 348 026 413        | 17 981 000         |                   |
| 8100 0006    | 21 207 413         | 0           | 0           | 0                   | 0                              | 0           | 273 026 413        | 18 771 494         |                   |
| 8100 0007    | 21 815 413         | 0           | 0           | 0                   | 0                              | 0           | 273 026 413        | 18 021 200         |                   |
| 8100 0008    | 21 207 413         | 0           | 0           | 0                   | 0                              | 0           | 273 026 413        | 18 071 380         |                   |
| 8100 0009    | 21 207 413         | 0           | 0           | 0                   | 0                              | 0           | 273 026 413        | 17 288 770         |                   |
| 8100 0010    | 21 815 413         | 0           | 0           | 0                   | 0                              | 0           | 273 026 413        | 17 000 000         |                   |
| 3100 0001    | 21 207 413         | 0           | 0           | 0                   | 0                              | 0           | 263 026 413        | 17 000 000         |                   |
| 3100 0002    | 21 815 413         | 0           | 0           | 0                   | 0                              | 0           | 81 377 413         | 17 000 000         |                   |
| 3100 0003    | 21 815 413         | 0           | 0           | 0                   | 0                              | 0           | 81 377 413         | 17 000 000         |                   |
| 3100 0004    | 21 815 413         | 0           | 0           | 0                   | 0                              | 0           | 263 026 413        | 18 336 666         |                   |
| 3100 0005    | 21 207 413         | 0           | 0           | 0                   | 0                              | 0           | 273 026 413        | 18 771 187         |                   |
| 3100 0006    | 21 207 413         | 0           | 0           | 0                   | 0                              | 0           | 273 026 413        | 18 876 000         |                   |
| 3100 0007    | 21 815 413         | 0           | 0           | 0                   | 0                              | 0           | 273 026 413        | 18 336 667         |                   |
| 3100 0008    | 21 207 413         | 0           | 0           | 0                   | 0                              | 0           | 273 026 413        | 17 818 200         |                   |
| 3100 0009    | 21 815 413         | 0           | 0           | 0                   | 0                              | 0           | 273 026 413        | 18 508 000         |                   |
| 3100 0010    | 21 207 413         | 0           | 0           | 0                   | 0                              | 0           | 273 026 413        | 18 779 200         |                   |
| 3100 0011    | 21 815 413         | 0           | 0           | 0                   | 0                              | 0           | 273 026 413        | 18 771 400         |                   |
| 3100 0012    | 21 815 413         | 0           | 0           | 0                   | 0                              | 0           | 273 026 413        | 18 021 400         |                   |
| 3100 0013    | 21 207 413         | 0           | 0           | 0                   | 0                              | 0           | 273 026 413        | 17 292 000         |                   |
| 3100 0014    | 21 815 413         | 0           | 0           | 0                   | 0                              | 0           | 30 987 413         | 18 000 000         |                   |
| 3100 0015    | 21 207 413         | 0           | 0           | 0                   | 0                              | 0           | 81 377 413         | 17 000 000         |                   |
| 3100 0016    | 21 815 413         | 0           | 0           | 0                   | 0                              | 0           | 30 987 413         | 18 000 000         |                   |
| 3100 0017    | 21 207 413         | 0           | 0           | 0                   | 0                              | 0           | 273 026 413        | 18 000 000         |                   |
| 3100 0018    | 21 815 413         | 0           | 0           | 0                   | 0                              | 0           | 273 026 413        | 17 000 000         |                   |
| 3100 0019    | 21 207 413         | 0           | 0           | 0                   | 0                              | 0           | 273 026 413        | 17 288 780         |                   |
| 3100 0020    | 21 815 413         | 0           | 0           | 0                   | 0                              | 0           | 273 026 413        | 18 021 200         |                   |
| <b>Total</b> | <b>500 000 000</b> | <b>0</b>    | <b>0</b>    | <b>38 000 000</b>   | <b>0</b>                       | <b>0</b>    | <b>499 052 826</b> | <b>479 000 000</b> |                   |

## SHIPPER OPERATIONS REPORT FORMAT DESCRIPTION

**Report Nos:** SORM26    **Area of Reporting:** Shipper  
Operations

**Title of Report:** Extent of Capacity Trading

### **1. Brief Description:**

This report shows the extent to which the shipper has traded entry and firm DM exit capacity during the month. It can be used to monitor the shipper's entry and exit capacity trading activity. Storage space and deliverability capacity trading are not included in this report.

### **2. Details:**

The report shows the number of requests, offers and deals for normal (not prearranged) trades, and the number of deals for prearranged trades for each shipper over the month.

### **3. Distribution:**

This report will be available each month on the Shipper Information Service database at M+15.

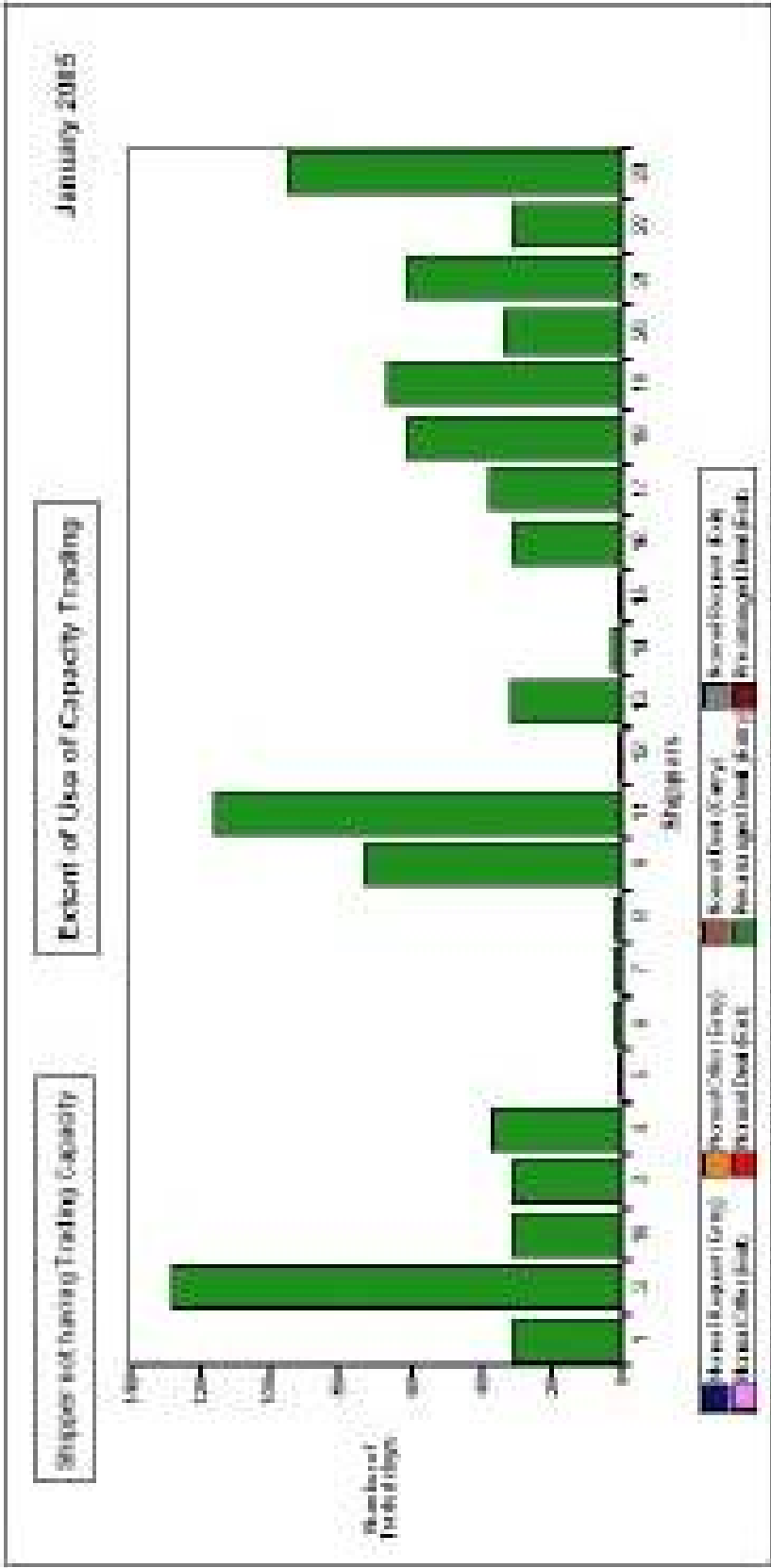
### **4. Production Schedule:**

The report will be generated and published to the Shipper Information Service Database at M+15.

Extent of Capacity Trading

January 2005

| Shipments | Early<br>Normal Trade<br>Response | Early<br>Normal Trade<br>Offer | Early<br>Normal Trade<br>Demand | Early<br>Normal Trade<br>Response | Early<br>Normal Trade<br>Offer | Early<br>Normal Trade<br>Demand | Early<br>Normal Trade<br>Response | Early<br>Normal Trade<br>Offer | Early<br>Normal Trade<br>Demand | Early<br>Normal Trade<br>Response | Early<br>Normal Trade<br>Offer | Early<br>Normal Trade<br>Demand | Early<br>Normal Trade<br>Response | Early<br>Normal Trade<br>Offer | Early<br>Normal Trade<br>Demand |
|-----------|-----------------------------------|--------------------------------|---------------------------------|-----------------------------------|--------------------------------|---------------------------------|-----------------------------------|--------------------------------|---------------------------------|-----------------------------------|--------------------------------|---------------------------------|-----------------------------------|--------------------------------|---------------------------------|
| 1         | 0                                 | 0                              | 0                               | 0                                 | 0                              | 0                               | 0                                 | 0                              | 0                               | 0                                 | 0                              | 0                               | 0                                 | 0                              | 0                               |
| 2         | 0                                 | 0                              | 0                               | 0                                 | 0                              | 0                               | 0                                 | 0                              | 0                               | 0                                 | 0                              | 0                               | 0                                 | 0                              | 0                               |
| 3         | 0                                 | 0                              | 0                               | 0                                 | 0                              | 0                               | 0                                 | 0                              | 0                               | 0                                 | 0                              | 0                               | 0                                 | 0                              | 0                               |
| 4         | 0                                 | 0                              | 0                               | 0                                 | 0                              | 0                               | 0                                 | 0                              | 0                               | 0                                 | 0                              | 0                               | 0                                 | 0                              | 0                               |
| 5         | 0                                 | 0                              | 0                               | 0                                 | 0                              | 0                               | 0                                 | 0                              | 0                               | 0                                 | 0                              | 0                               | 0                                 | 0                              | 0                               |
| 6         | 0                                 | 0                              | 0                               | 0                                 | 0                              | 0                               | 0                                 | 0                              | 0                               | 0                                 | 0                              | 0                               | 0                                 | 0                              | 0                               |
| 7         | 0                                 | 0                              | 0                               | 0                                 | 0                              | 0                               | 0                                 | 0                              | 0                               | 0                                 | 0                              | 0                               | 0                                 | 0                              | 0                               |
| 8         | 0                                 | 0                              | 0                               | 0                                 | 0                              | 0                               | 0                                 | 0                              | 0                               | 0                                 | 0                              | 0                               | 0                                 | 0                              | 0                               |
| 9         | 0                                 | 0                              | 0                               | 0                                 | 0                              | 0                               | 0                                 | 0                              | 0                               | 0                                 | 0                              | 0                               | 0                                 | 0                              | 0                               |
| 10        | 0                                 | 0                              | 0                               | 0                                 | 0                              | 0                               | 0                                 | 0                              | 0                               | 0                                 | 0                              | 0                               | 0                                 | 0                              | 0                               |
| 11        | 0                                 | 0                              | 0                               | 0                                 | 0                              | 0                               | 0                                 | 0                              | 0                               | 0                                 | 0                              | 0                               | 0                                 | 0                              | 0                               |
| 12        | 0                                 | 0                              | 0                               | 0                                 | 0                              | 0                               | 0                                 | 0                              | 0                               | 0                                 | 0                              | 0                               | 0                                 | 0                              | 0                               |
| 13        | 0                                 | 0                              | 0                               | 0                                 | 0                              | 0                               | 0                                 | 0                              | 0                               | 0                                 | 0                              | 0                               | 0                                 | 0                              | 0                               |
| 14        | 0                                 | 0                              | 0                               | 0                                 | 0                              | 0                               | 0                                 | 0                              | 0                               | 0                                 | 0                              | 0                               | 0                                 | 0                              | 0                               |
| 15        | 0                                 | 0                              | 0                               | 0                                 | 0                              | 0                               | 0                                 | 0                              | 0                               | 0                                 | 0                              | 0                               | 0                                 | 0                              | 0                               |
| 16        | 0                                 | 0                              | 0                               | 0                                 | 0                              | 0                               | 0                                 | 0                              | 0                               | 0                                 | 0                              | 0                               | 0                                 | 0                              | 0                               |
| 17        | 0                                 | 0                              | 0                               | 0                                 | 0                              | 0                               | 0                                 | 0                              | 0                               | 0                                 | 0                              | 0                               | 0                                 | 0                              | 0                               |
| 18        | 0                                 | 0                              | 0                               | 0                                 | 0                              | 0                               | 0                                 | 0                              | 0                               | 0                                 | 0                              | 0                               | 0                                 | 0                              | 0                               |
| 19        | 0                                 | 0                              | 0                               | 0                                 | 0                              | 0                               | 0                                 | 0                              | 0                               | 0                                 | 0                              | 0                               | 0                                 | 0                              | 0                               |
| 20        | 0                                 | 0                              | 0                               | 0                                 | 0                              | 0                               | 0                                 | 0                              | 0                               | 0                                 | 0                              | 0                               | 0                                 | 0                              | 0                               |
| 21        | 0                                 | 0                              | 0                               | 0                                 | 0                              | 0                               | 0                                 | 0                              | 0                               | 0                                 | 0                              | 0                               | 0                                 | 0                              | 0                               |
| 22        | 0                                 | 0                              | 0                               | 0                                 | 0                              | 0                               | 0                                 | 0                              | 0                               | 0                                 | 0                              | 0                               | 0                                 | 0                              | 0                               |
| 23        | 0                                 | 0                              | 0                               | 0                                 | 0                              | 0                               | 0                                 | 0                              | 0                               | 0                                 | 0                              | 0                               | 0                                 | 0                              | 0                               |
| TOTAL     | 0                                 | 0                              | 0                               | 0                                 | 0                              | 0                               | 0                                 | 0                              | 0                               | 0                                 | 0                              | 0                               | 0                                 | 0                              | 0                               |



## SHIPPER OPERATIONS REPORT FORMAT DESCRIPTION

**Report Nos:** SORM31    **Area of Reporting:** Shipper  
Operations

**Title of Report:** NTS Exit Capacity Booking

### 1. Brief Description:

This report lists by Zone, the shippers exit capacity, total allocation and allocation in excess of capacity .

### 2. Details:

The report lists by zone the shippers daily net capacity (for the month). This is the booked capacity, net of any capacity trades for the day. It also shows the daily allocated flow (for the month) attributable to the shipper. Allocation in excess of capacity quantity is the amount by which the allocated flow exceeds the booked capacity on the day for a given Exit Zone(s) for Firm DM Supply Points or relevant NTS Connected System Exit Points.

### 3. Distribution:

This report will be available each month on the Shipper Information Service database at M+15.

### 4. Production Schedule:

The report will be generated and published to the Shipper Information Service database at M+15.

## Exit Capacity Booking

January 2005

| Case Day      | Net capacity<br>(perft) | Total Allocation<br>(perft) | Allocation<br>Excess of<br>Capacity (perft) |
|---------------|-------------------------|-----------------------------|---|
| 1             | 25,000,000              | 22,001,420                  | na  |
| 2             | 25,000,000              | 22,505,747                  | na  |
| 3             | 25,000,000              | 22,505,480                  | na  |
| 4             | 25,000,000              | 22,527,285                  | na  |
| 5             | 25,000,000              | 22,507,250                  | na  |
| 6             | 25,000,000              | 22,528,315                  | na  |
| 7             | 25,000,000              | 22,509,741                  | na  |
| 8             | 25,000,000              | 22,521,241                  | na  |
| 9             | 25,000,000              | 22,503,054                  | na  |
| 10            | 25,000,000              | 22,520,074                  | na  |
| 11            | 25,000,000              | 22,503,933                  | na  |
| 12            | 25,000,000              | 22,506,025                  | na  |
| 13            | 25,000,000              | 22,523,511                  | na  |
| 14            | 25,000,000              | 22,515,741                  | na  |
| 15            | 25,000,000              | 22,511,624                  | na  |
| 16            | 25,000,000              | 22,503,112                  | na  |
| 17            | 25,000,000              | 22,525,332                  | na  |
| 18            | 25,000,000              | 22,503,985                  | na  |
| 19            | 25,000,000              | 22,523,242                  | na  |
| 20            | 25,000,000              | 22,504,750                  | na  |
| 21            | 25,000,000              | 22,501,051                  | na  |
| 22            | 25,000,000              | 22,527,572                  | na  |
| 23            | 25,000,000              | 22,504,326                  | na  |
| 24            | 25,000,000              | 22,524,240                  | na  |
| 25            | 25,000,000              | 22,503,240                  | na  |
| 26            | 25,000,000              | 22,507,582                  | na  |
| 27            | 25,000,000              | 22,508,080                  | na  |
| 28            | 25,000,000              | 22,506,742                  | na  |
| 29            | 25,000,000              | 22,514,750                  | na  |
| 30            | 25,000,000              | 22,503,541                  | na  |
| <b>Totals</b> | <b>850,000,000</b>      | <b>800,563,120</b>          | <b>na</b>                                   |

## **6. Data Dictionary**

[Individual Data Dictionary pages to be inserted here]