

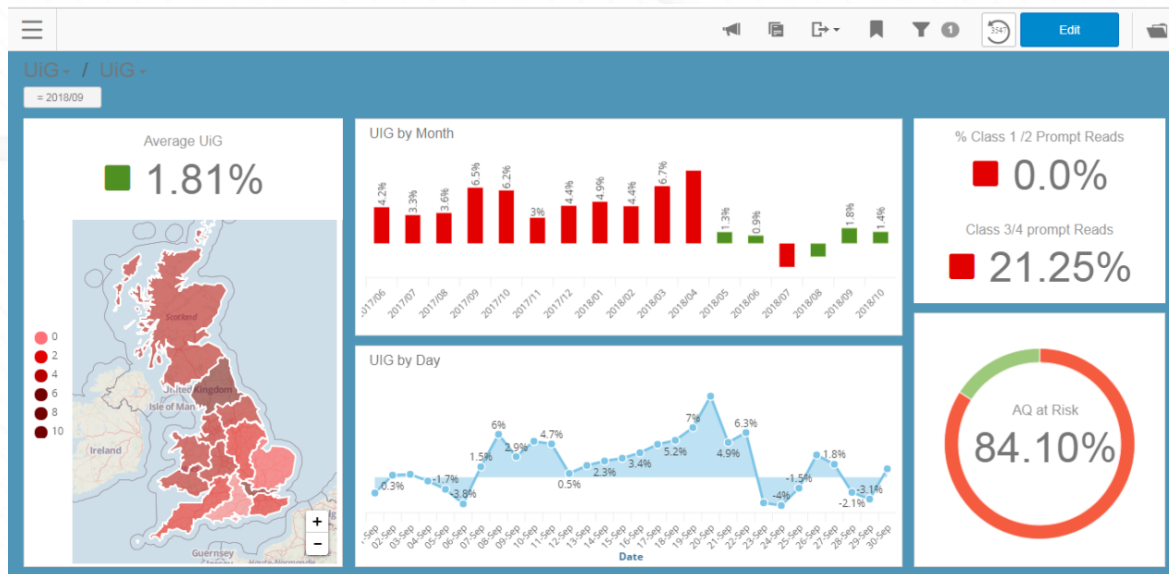
# **UIG Task Force – Dashboards Reporting (updated)**

**31<sup>st</sup> October 2018**

# UIG Shipper Dashboards

Working with our partners, Xoserve are working towards offering the insight required to help you understand your UIG performance and to make better decisions to help your business.

To help share key data around UIG and affecting factors such as Read Performance and AQ at risk Xoserve are developing a business intelligence solution for Shippers.



# UIG Shipper Dashboards

Report Title	Report Description
Read Performance	Measure of current read performance as per current UNC standard per class/EUC/MRF
Total AQ at risk where sites not read to standard	<p>Total AQ of all sites reported without up to date reads for the following categories:</p> <p>For Class 1: No read accepted for 1 and 3 months</p> <p>For Class 2: No read accepted for 1 and 3 months</p> <p>For Class 3: No read accepted for 2 and 4 months</p> <p>For Class 4: AQ greater than 293,000 or Smart/AMR fitted – No read accepted for 2 and 4 months</p> <p>For Class 4: AQ less than 293,000, not Smart/AMR – No read accepted for 12 and 15 months</p>
WAR Bands	Total AQ at risk due to sites that are not in a WAR Band EUC.

# UIG Shipper Dashboards

## Reporting capabilities considered for inclusion on drafted reports:

Trending – All of the reports to indicate if trending is up or down against historic data

Comparison to market – Shipper ranking, 1<sup>st</sup>, 2<sup>nd</sup> etc out of the number of shippers this metric applies to. Note Shippers will not have visibility of other shippers rankings

LDZ/Post code drill down – Capability for counts to be available at LDZ/Post code level

Shipper filter – To enable a user to view data for an individual supplier (if required)

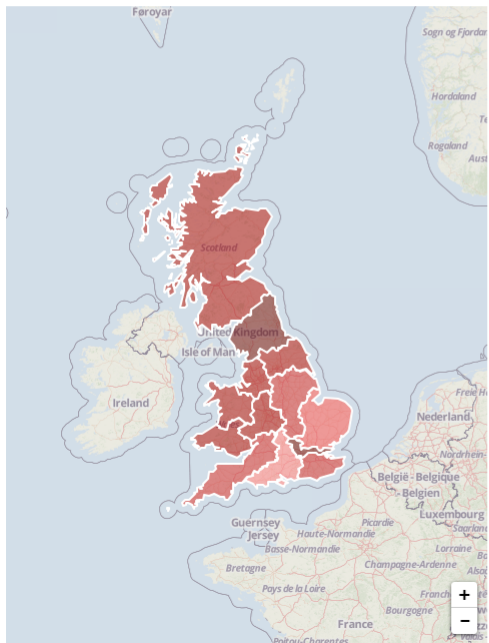
The slide features a light blue background with a faint, stylized house silhouette. The house has a gabled roof and a row of five rectangular windows. The text "Business Intelligence Demo" is centered within the window area. A solid blue horizontal bar is at the top, and a solid cyan horizontal bar is at the bottom.

# **Business Intelligence Demo**



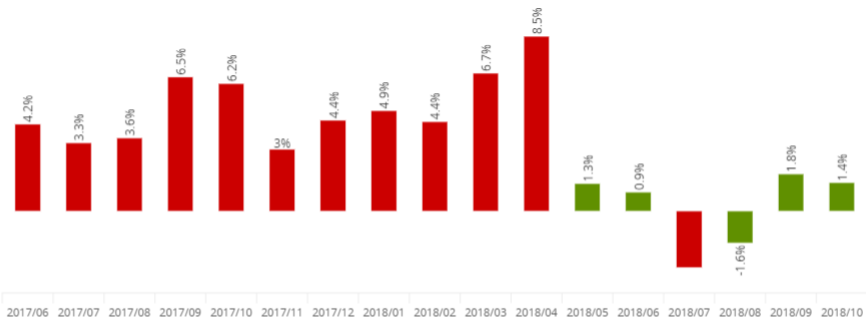
Average UIG

**1.81%**



- 0
- 2
- 4
- 6
- 8
- 10

UIG by Month



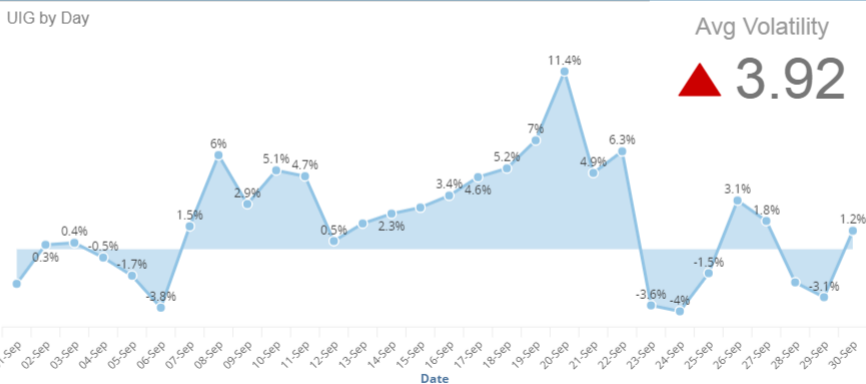
% Class 1 > 1 month

**13.8%**

% Class 4 > 3 Months Old

**38.95%**

UIG by Day



= 1   = AQ

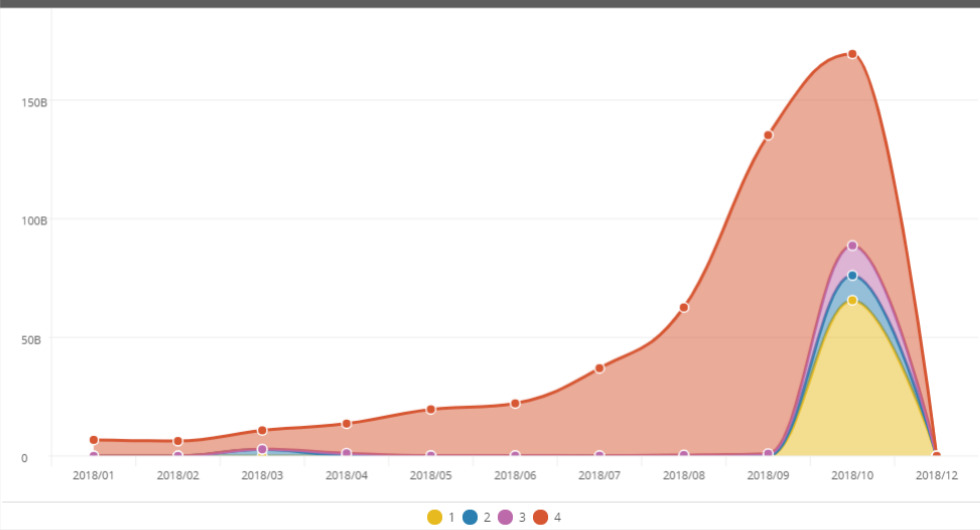
AQ Roll  
**134.01B**

% of National AQ  
**27.32%**

# Sites  
**24,208,609**

Measure  
 AQ    # Sites

Recent Reads over Time



AQ/Sites by Class and Age of Last Read

