

Gas  
Transmission

# NTSCMF

## Forecasted Contract Capacity (FCC) Methodology Review for Gas Year 2022/23

07 December 2021

nationalgrid



# Forecasted Contracted Capacity (FCC) Methodology 2021/22

**FCC Methodology was reviewed and amended for the setting of charges for 2021/22 Gas Year.**

- Discussions were held with the industry and an amendment methodology was established and consulted on with the industry
- The New FCC Methodology was published and used for setting of Transmission Services Capacity prices which are applicable from 01 October 2021 for the Gas Year.

**Discussion Documents, Consultation and latest FCC Methodology can be found on: <https://www.nationalgrid.com/uk/gas-transmission/charging/gas-charging-discussion-gcd-papers> under the 2021 Forecasted Contracted Capacity (FCC) Methodology Consultation header.**

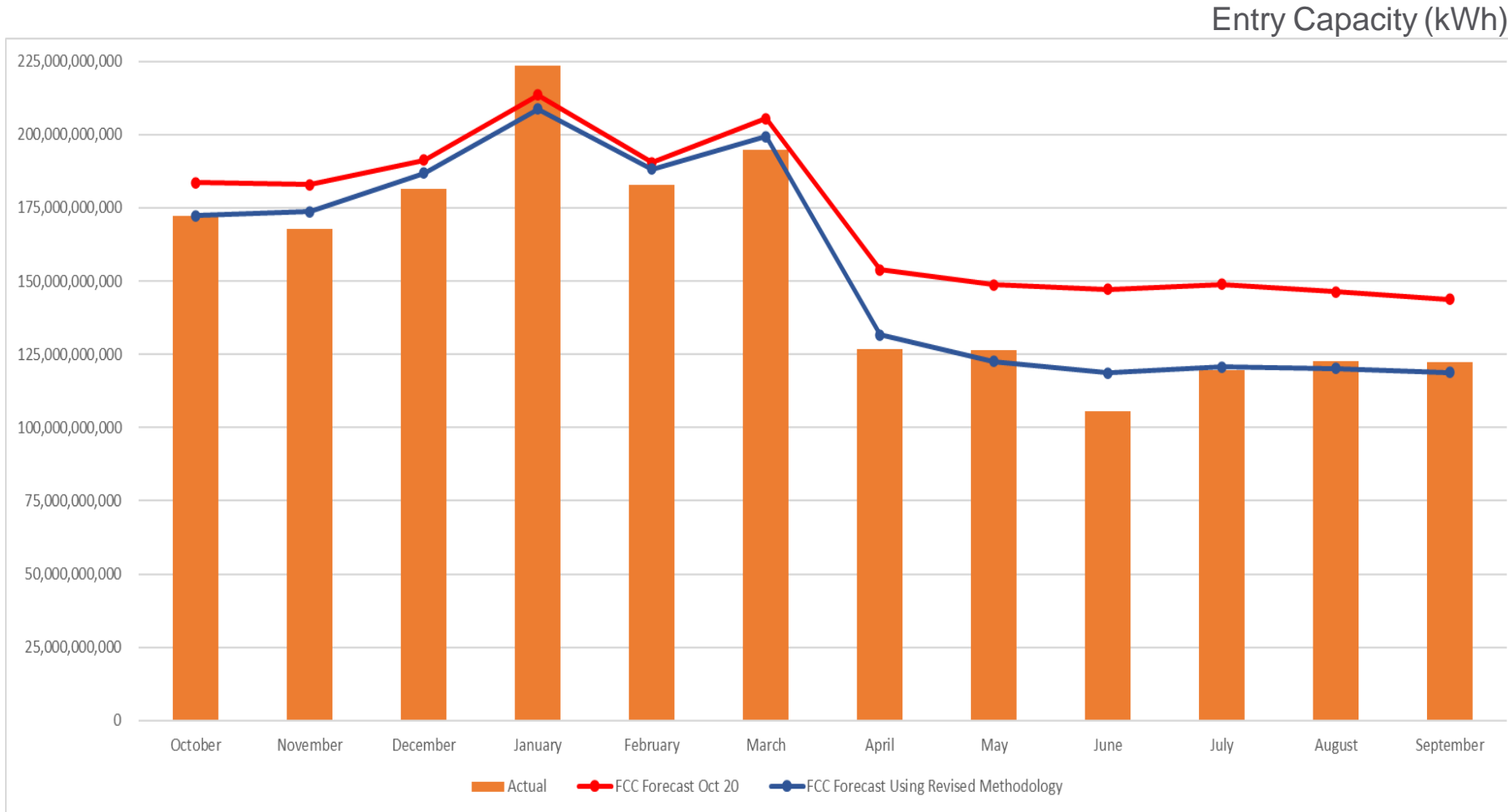
# **Forecasted Contracted Capacity (FCC) Methodology 2021/22**

**During the FCC Methodology review for the Gas Year 2021/22 it was agreed that when we had more data available for a Gas Year under the UNC0678A proposal we would be able to undertake more analysis on the FCC Methodology.**

**To look at this we have compared that following (for Entry and Exit separately) which can be seen on the next two slides:**

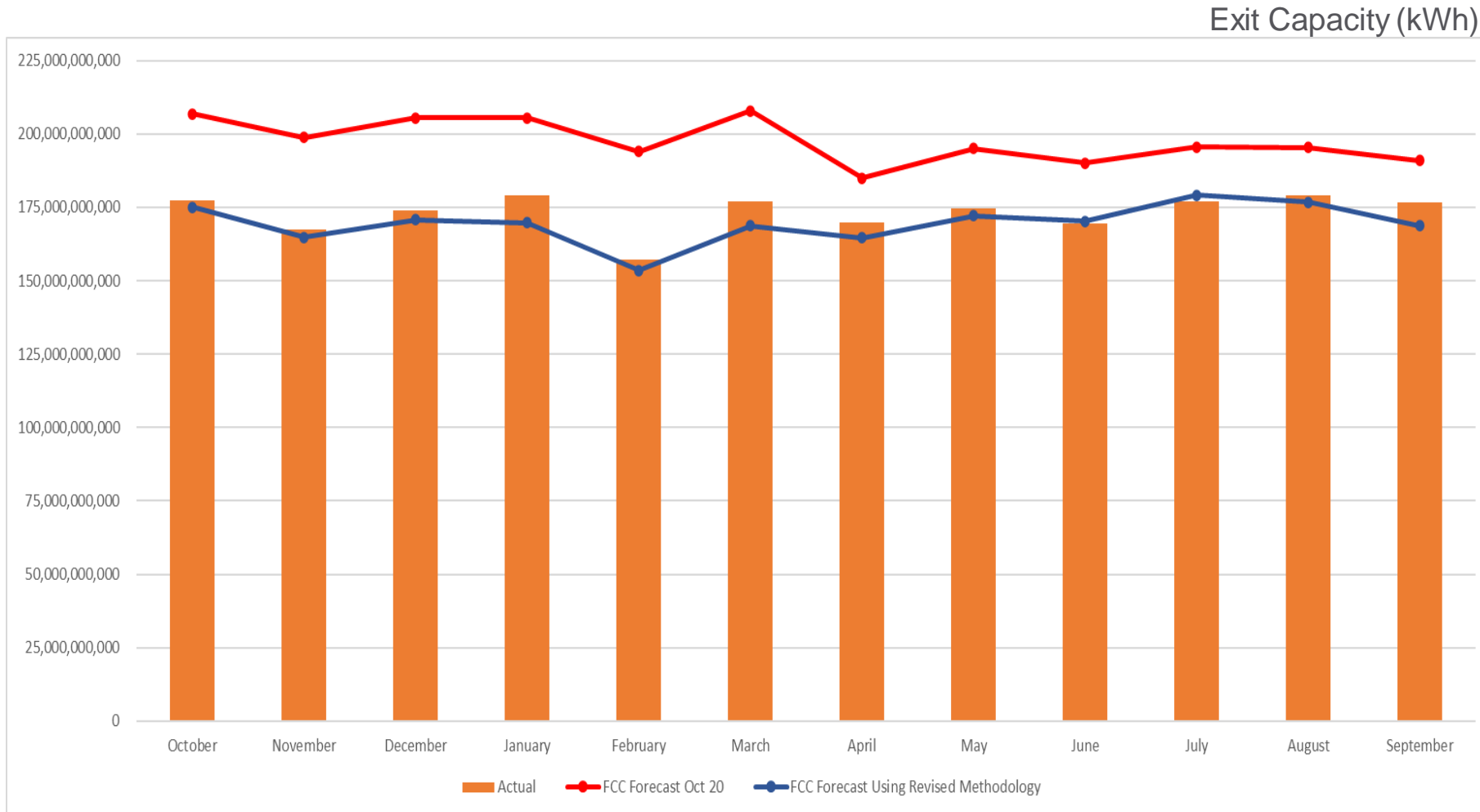
- Compared actuals for Gas Year 2020/21 to FCC Methodology used for Gas Year 2020/21**
- Compared actuals for Gas Year 2020/21 to FCC Methodology used for Gas Year 2021/22**

# FCC Original (2020/21) v Revised Methodology (2021/22): Gas Year Oct 20 – Sep 21 – ENTRY



ENTRY CAPACITY (kWh)	
Actual 2020/21	1,845,417,904,132
Original FCC Forecast	2,055,971,308,325 +210,553,404,193 11.4%
Revised FCC Forecast (retrospectively applied to 20/21)	1,861,856,891,953 +16,438,987,821 0.9%

# FCC Original (2020/21) v Revised Methodology (2021/22): Gas Year Oct 20 – Sep 21 - EXIT



EXIT CAPACITY (kWh)	
Actual 2020/21	2,078,773,261,975
Original FCC Forecast	2,370,674,521,554 +291,901,259,579 14.0%
Revised FCC Forecast (retrospectively applied to 20/21)	2,034,132,476,449 -44,640,785,526 -2.1%

# FCC Methodology Review for Gas Year 2022/23

**Proposal for the FCC Methodology Review for Gas Year 2022/23 to look at the following updates:**

- **Exit**
  - Exit FCC to monthly from annual (to align to the Entry FCC)
  - Review of the DN's 1 in 20 peak
    - Is there any update on what will be booked based on the new Exit Capacity Planning Guidance (ECPG)
  - Any modifications which influence FCC
    - UNC 0785 combining Bacton Exit Points – FCC at Exit points as per Licence
- **Entry**
  - Any modifications which influence FCC

**What other things need to be considered?**

▶ Gas  
Transmission

# Contacts

nationalgrid



# Contact

Colin Williams  
Charging & Revenue Manager

[Colin.williams@nationalgrid.com](mailto:Colin.williams@nationalgrid.com)

Dave Bayliss  
Revenue Lead

[Dave.bayliss@nationalgrid.com](mailto:Dave.bayliss@nationalgrid.com)

Laura Johnson  
Senior Code Change Officer

[Laura.johnson@nationalgrid.com](mailto:Laura.johnson@nationalgrid.com)

Kieran McGoldrick  
Senior Charging Officer

[Kieran.mcgoldrick@nationalgrid.com](mailto:Kieran.mcgoldrick@nationalgrid.com)

Dan Hisgett  
Code Change Officer

[Daniel.hisgett@nationalgrid.com](mailto:Daniel.hisgett@nationalgrid.com)

## General Questions

---

General Regulatory Change Queries  
[box.gsoconsultations@nationalgrid.com](mailto:box.gsoconsultations@nationalgrid.com)

General Charging Queries  
[box.NTSGasCharges@nationalgrid.com](mailto:box.NTSGasCharges@nationalgrid.com)

General Capacity Queries  
[box.capacityauctions@nationalgrid.com](mailto:box.capacityauctions@nationalgrid.com)



nationalgrid