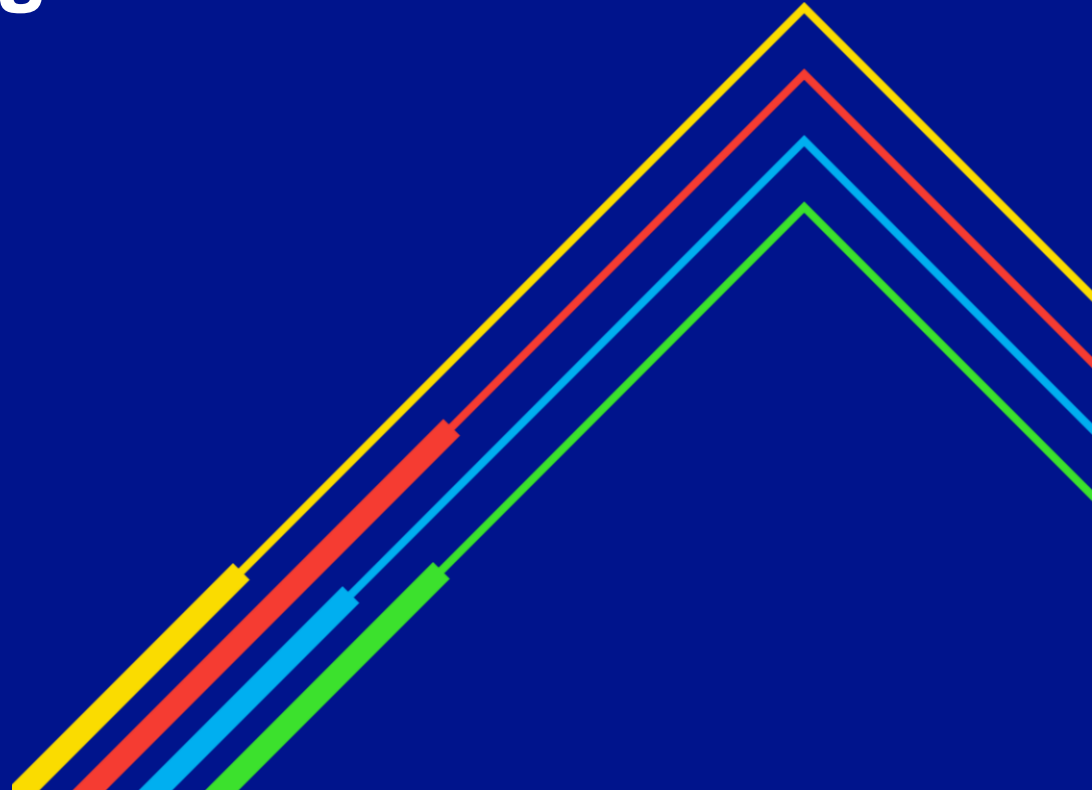


Overruns Reporting

Transmission Workgroup
3rd March 2022

national**grid**



Entry (December 2021)

	No of Overruns		Charge Quantity (mcm)		Charge Amount (£)		No of Users		No of ASEPs	
	21/22	20/21	21/22	20/21	21/22	20/21	21/22	20/21	21/22	20/21
Oct	541	319	17.66	10.84	540,668	270,470	30	31	9	9
<i>largest (3)</i>	<i>User A</i>		<i>0.97</i>		<i>29,646</i>					
	<i>User A</i>		<i>0.76</i>		<i>23,255</i>					
	<i>User B</i>		<i>0.67</i>		<i>20,637</i>					
Nov	569	369	22.82	15.83	697,866	442,615	30	25	13	8
<i>largest (3)</i>	<i>User A</i>		<i>0.89</i>		<i>27,320</i>					
	<i>User B</i>		<i>0.93</i>		<i>28,507</i>					
	<i>User C</i>		<i>0.79</i>		<i>24,316</i>					
Dec	514	403	14.68	7.63	412,650	180,741	26	26	11	10
<i>largest (3)*</i>	<i>User A</i>		<i>0.62</i>		<i>19,010</i>					
	<i>User D</i>		<i>0.48</i>		<i>14,682</i>					
	<i>User E</i>		<i>1.65</i>		<i>14,237</i>					
Total 2021/22 Gas Year**	1624	1091	55.16	34.29	1,651,184	893,827				
Total (from 1st Oct 2020)	6,901	2,662	198	92	5,112,246	1,362,585				

*User A in December and October/November is the same User

**Including negative overruns and adjustments

Exit (December 2021)

	No of Overruns		Charge Quantity (mcm)		Charge Amount (£)		No of Users		No of Offtakes	
	21/22	20/21	21/22	20/21	21/22	20/21	21/22	20/21	21/22	20/21
Oct	174	137	7.97	9.11	104,048.42	111,795	22	16	35	28
<i>largest (3)</i>	<i>User A</i>		<i>1.24</i>		<i>17,300.59</i>					
	<i>User B</i>		<i>1.04</i>		<i>14,488.67</i>					
	<i>User C</i>		<i>0.57</i>		<i>7979.07</i>	<i>38</i>				
Nov	235	536	10.69	8.40	138,166.28	102,317	16	19	32	30
<i>largest (3)</i>	<i>User D</i>		<i>0.79</i>		<i>11,029.76</i>					
	<i>User E</i>		<i>0.69</i>		<i>9,655.13</i>					
	<i>User E</i>		<i>0.63</i>		<i>8,733.29</i>	<i>21</i>				
Dec	190	398	10.67	8.53	125,350.43	96,008	15	21	33	31
<i>largest (3)</i>	<i>User F</i>		<i>2.09</i>		<i>29,051.78</i>					
	<i>User C</i>		<i>1.33</i>		<i>18,511.73</i>					
	<i>User E</i>		<i>0.47</i>		<i>6,541.12</i>					
Total 2021/22 Gas Year*	599	1,071	29	26	367,565	310,119				
Total (from 1st Oct 2020)	3,428	1,119	111	42	1,321,137	342,460				

*Nov & Dec data has been updated with adjustments

Entry data (October 2020 – September 2021)

	No of Overruns		Charge Quantity (mcm)		Charge Amount (£)		No of Users		No of ASEPs	
	20/21	19/20	20/21	19/20	20/21	19/20	20/21	19/20	20/21	19/20
Oct	319	129	10.84	3.40	270,470.21	34,373.94	31	21	9	8
Nov	369	98	15.83	3.77	442,615.19	10,749.94	25	17	8	9
Dec	403	123	7.63	5.41	180,741.39	35,823.08	26	18	10	7
Jan	379	200	8.73	6.64	203,889.59	69,319.21	23	25	8	10
Feb	410	117	8.31	2.93	196,899.49	30,807.88	24	15	8	8
Mar	500	160	10.90	6.48	273,012.66	82,350.69	24	24	8	7
Apr	565	146	25.93	15.64	606,193.82	57,607.67	29	20	8	9
May	551	141	9.93	3.55	227,449.21	36,474.81	29	17	10	6
Jun	405	132	12.82	2.43	303,336.73	26,130.22	26	18	8	8
Jul	416	130	10.99	3.50	260,174.05	27,093.50	25	17	7	7
Aug	480	87	9.81	0.84	232,032.88	11,725.55	24	11	7	5
Sep	480	108	11.16	3.42	264,246.95	46,301.54	25	16	8	5
Total*	5277	1571	142.88	58.01	3,461,062.17	468,758.03				

Exit data (October 2020 – September 2021)

	No of Overruns		Charge Quantity (mcm)		Charge Amount (£)		No of Users		No of Offtakes	
	20/21	19/20	20/21	19/20	20/21	19/20	20/21	19/20	20/21	19/20
Oct	137	1	9.11	0.21	111,795	2,874.67	16	1	28	1
Nov	158	0	8.40	-	102,316.93		19		30	0
Dec	178	0	8.53	-	96,007.55		21		31	0
Jan	142	2	10.25	0.02	131,626.60	1.32	17	1	31	2
Feb	166	8	8.59	1.24	92,831.55	8,746.03	15	4	29	4
Mar	144	5	3.12	0.22	38,972.44	19.52	15	3	25	3
Apr	218	0	6.85	0.00	83,208.21	0	20	0	34	
May	179	2	5.45	0.61	66,865.05	6,906.76	20	2	31	2
Jun	121	7	2.74	0.18	35,604.23	4,786.78	15	3	26	3
Jul	163	15	4.82	13.27	50,184.96	2,275.51	17	12	27	3
Aug	167	4	6.76	0.64	58,744.07	6,725.84	18	4	27	4
Sep	148	4	7.30	0.04	85,415.02	3.79	19	1	30	1
Total	1921	48	81.90	16.42	953,571.48	32,340.22				

national**grid**