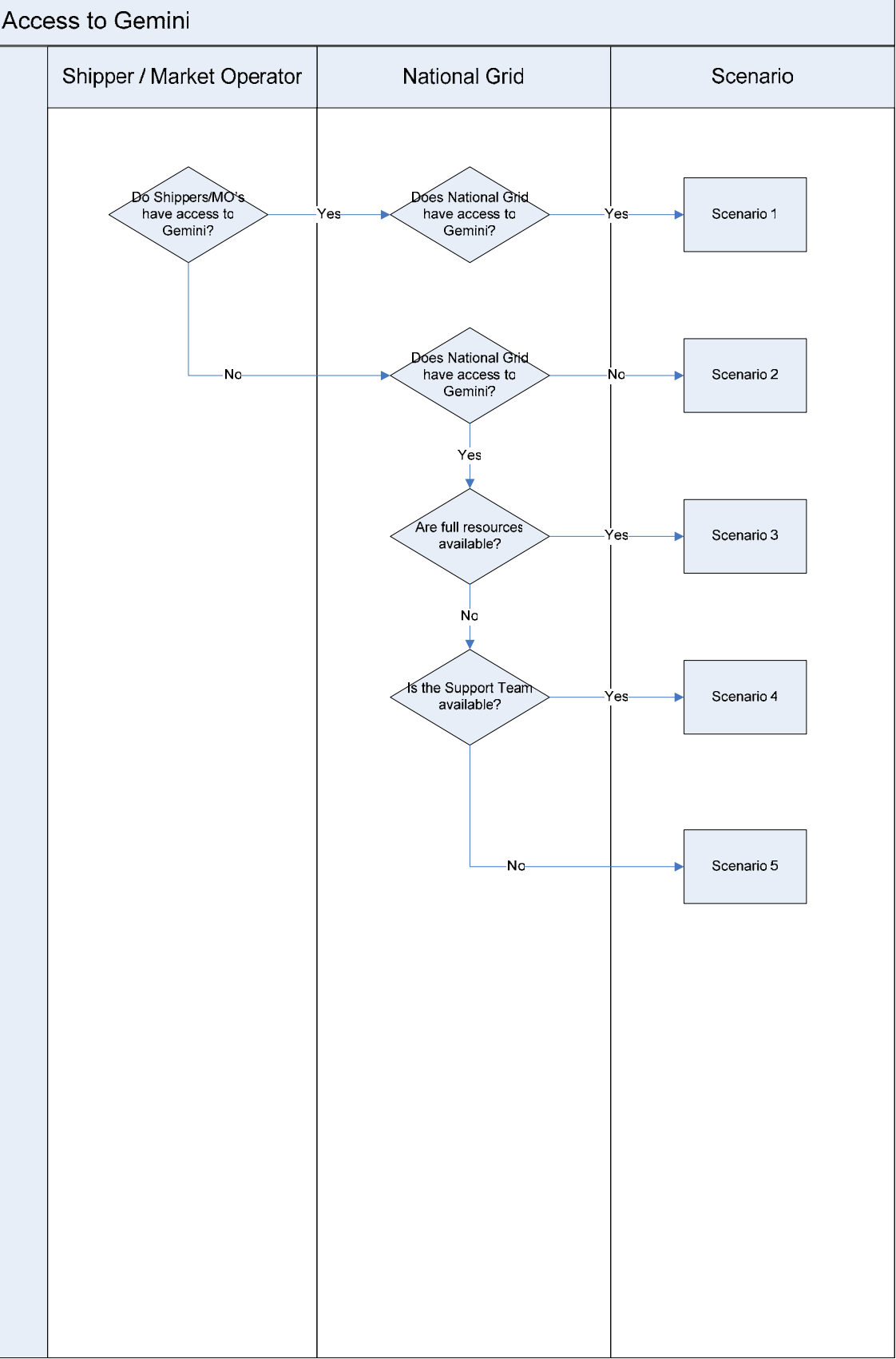


Gemini Contingency Procedures

12 August 2008

All Scenarios



Scenario 5

National Grid has access to Gemini, however, Shippers and Market Operator's do not. Support staff are unavailable, but shift staff are available and therefore basic functions can be carried out.

Party	Access During Incident
National Grid	✓
Shippers	✗
Market Operators	✗

Energy Procedures - After the Day

Activity	On Behalf Of	National Grid	UK Link
Input Noms and Renoms	Shipper	NO/GNCC05/PRC/CM032/014 - C05/9002 - Part 3	After the Day Procedure Required
Output Noms and Renoms	Shipper	NO/GNCC05/PRC/CM032/014 - C05/9002 - Part 3	After the Day Procedure Required
Trade Noms (NBP)	Shipper	NO/GNCC05/PRC/CM032/014 - C05/9002 - Part 3	After the Day Procedure Required
Physical and Locational Flow Noms and Renoms	Shipper	NO/GNCC05/PRC/CM032/014 - C05/9018 - Part 9	C05/9017 C05/9016
Physical and Locational Flow Noms and Renoms	Market Operator	NO/GNCC05/PRC/CM032/014 - C06/9046 - Part 4	N/A
Gas Trades (OCM Title)	Market Operator	NO/GNCC05/PRC/CM032/014 - C06/9046 - Part 4	N/A
Access NDM Position	Shipper	N/A	N/A
Access Imbalance Position	Shipper	N/A	N/A
Change DM Output Nom Deadline	N/A	N/A	N/A

Scenario 5

National Grid has access to Gemini, however, Shippers and Market Operator’s do not. Support staff are unavailable, but shift staff are available and therefore basic functions can be carried out.

Party	Access During Incident
National Grid	✓
Shippers	✗
Market Operators	✗

National Grid Staffing	Availability
Shift Team	✓
Support Team	✗
Full Resources	✗

Energy Procedures - On the Day

Activity	On Behalf Of	National Grid	UK Link	
			Online	Offline
Input Noms and Renoms	Shipper	Suspend	Not Available	Record maintained by shipper
Output Noms and Renoms	Shipper	Suspend	Not Available	Record maintained by shipper
Trade Noms (NBP)	Shipper	Suspend	Not Available	Record maintained by shipper
Physical and Locational Flow Noms and Renoms	Shipper	Procedure Required	Not Available	C05/9017 C05/9016
Physical and Locational Flow Noms and Renoms	Market Operator	Suspend	N/A	N/A
Gas Trades (OCM Title)	Market Operator	NO/GNCC05/PRC/CM032/014 - C06/9045 - Part 2	N/A	N/A
Access NDM Position	Shipper	N/A	N/A	N/A
Access Imbalance Position	Shipper	N/A	N/A	N/A
Change DM Output Nom Deadline	N/A	NO/GNCC/05/PRC/CM032/015 - 06/913	N/A	N/A

Scenario 1

All parties have access to Gemini

Party	Access During Incident
National Grid	✓
Shippers	✓
Market Operators	✓

Energy Procedures

Activity	On Behalf Of	National Grid	UK Link
Input Noms and Renoms	Shipper		
Output Noms and Renoms	Shipper		
Trade Noms (NBP)	Shipper		
Physical and Locational Flow Noms and Renoms	Shipper		
Physical and Locational Flow Noms and Renoms	Market Operator		
Gas Trades (OCM Title)	Market Operator		
Access NDM Position	Shipper		
Access Imbalance Position	Shipper		
Change DM Output Nom Deadline	N/A		

Scenario 2

No parties (National Grid, Market Operator's and Shippers) have access to Gemini and are unable to function

Party	Access During Incident
National Grid	✗
Shippers	✗
Market Operators	✗

National Grid Staffing	Availability
Shift Team	✗
Support Team	✗
Full Resources	✗

Energy Procedures - On the Day

Activity	On Behalf Of	National Grid	UK Link	
			Online	Offline
Input Noms and Renoms	Shipper	Suspend	Not Available	Record maintained by shipper
Output Noms and Renoms	Shipper	Suspend	Not Available	Record maintained by shipper
Trade Noms (NBP)	Shipper	Suspend	Not Available	Record maintained by shipper
Physical and Locational Flow Noms and Renoms	Shipper	Procedure Required	Not Available	C05/9017 C05/9016
Physical and Locational Flow Noms and Renoms	Market Operator	N/A	N/A	N/A
Gas Trades (OCM Title)	Market Operator	Suspend	N/A	N/A
Access NDM Position	Shipper	N/A	N/A	N/A
Access Imbalance Position	Shipper	N/A	N/A	N/A
Change DM Output Nom Deadline	N/A	N/A	N/A	N/A

Scenario 4

National Grid has access to Gemini, however, Shippers and Market Operator's do not. Shift staff and support staff are available, and therefore although standard functions are not able to be carried out more functions can be carried out compared to the basic functions.

Party	Access During Incident
National Grid	✓
Shippers	✗
Market Operators	✗

Energy Procedures - After the Day

Activity	On Behalf Of	National Grid	UK Link
Input Noms and Renoms	Shipper	NO/GNCC05/PRC/CM032/015 - C05/9004 - Part 10	C05/9011 C05/9009
Output Noms and Renoms	Shipper	NO/GNCC05/PRC/CM032/015 - C05/9004 - Part 10	C05/9011 C05/9009
Trade Noms (NBP)	Shipper	NO/GNCC05/PRC/CM032/014 - C05/9002 - Part 3	C05/9011 C05/9009
Physical and Locational Flow Noms and Renoms	Shipper	NO/GNCC05/PRC/CM032/015 - C05/9019 - Part 1	C05/9017 C05/9016
Physical and Locational Flow Noms and Renoms	Market Operator	NO/GNCC05/PRC/CM032/015 - C06/9025 - Part 3	N/A
Gas Trades (OCM Title)	Market Operator	NO/GNCC05/PRC/CM032/014 - C06/9045 - Part 2	N/A
Access NDM Position	Shipper	N/A	N/A
Access Imbalance Position	Shipper	N/A	N/A
Change DM Output Nom Deadline	N/A	N/A	N/A

Scenario 4

National Grid has access to Gemini, however, Shippers and Market Operator's do not. Shift staff and support staff are available, and therefore although standard functions are not able to be carried out more functions can be carried out compared to the basic functions.

Party	Access During Incident
National Grid	✓
Shippers	✗
Market Operators	✗

National Grid Staffing	Availability
Shift Team	✓
Support Team	✓
Full Resources	✗

Energy Procedures - On the Day

Activity	On Behalf Of	National Grid	UK Link	
			Online	Offline
Input Noms and Renoms	Shipper	Suspend	Not Available	Record maintained by shipper
Output Noms and Renoms	Shipper	NO/GNCC05/PRC/CM032/015 - C05/9004 - Part 10	Not Available	C05/9011 C05/9009
Trade Noms (NBP)	Shipper	Suspend	Not Available	Record maintained by shipper
Physical and Locational Flow Noms and Renoms	Shipper	NO/GNCC05/PRC/CM032/015 - C05/9019 - Part 1	Not Available	C05/9017 C05/9016
Physical and Locational Flow Noms and Renoms	Market Operator	NO/GNCC05/PRC/CM032/015 - C06/9025 - Part 3	N/A	N/A
Gas Trades (OCM Title)	Market Operator	NO/GNCC05/PRC/CM032/014 - C06/9045 - Part 2	N/A	N/A
Access NDM Position	Shipper	N/A	N/A	N/A
Access Imbalance Position	Shipper	N/A	N/A	N/A
Change DM Output Nom Deadline	N/A	NO/GNCC/05/PRC/CM032/015 - 06/913	N/A	N/A

Scenario 2

No parties (National Grid, Market Operator's and Shippers) have access to Gemini and are unable to function

Party	Access During Incident
National Grid	✗
Shippers	✗
Market Operators	✗

Energy Procedures - After the Day

Activity	On Behalf Of	National Grid	UK Link
Input Noms and Renoms	Shipper	NO/GNCC05/PRC/CM032/014 - C05/9002 - Part 3	C05/9011 C05/9009
Output Noms and Renoms	Shipper	NO/GNCC05/PRC/CM032/014 - C05/9002 - Part 3	C05/9011 C05/9009
Trade Noms (NBP)	Shipper	NO/GNCC05/PRC/CM032/014 - C05/9002 - Part 3	C05/9011 C05/9009
Physical and Locational Flow Noms and Renoms	Shipper	NO/GNCC05/PRC/CM032/014 - C05/9018 - Part 9	C05/9017 C05/9016
Physical and Locational Flow Noms and Renoms	Market Operator	NO/GNCC05/PRC/CM032/014 - C06/9046 - Part 4	N/A
Gas Trades (OCM Title)	Market Operator	NO/GNCC05/PRC/CM032/014 - C06/9046 - Part 4	N/A
Access NDM Position	Shipper	N/A	N/A
Access Imbalance Position	Shipper	N/A	N/A
Change DM Output Nom Deadline	N/A	N/A	N/A

Scenario 3

National Grid has access to Gemini, however, Shippers and Market Operator's do not. Full resources are available, and therefore although a full suite of functions may not necessarily be able to be carried out, an enhanced set of functions can be.

Party	Access During Incident
National Grid	✓
Shippers	✗
Market Operators	✗

National Grid Staffing	Availability
Shift Team	✓
Support Team	✓
Full Resources	✓

Energy Procedures - On the Day

Activity	On Behalf Of	National Grid	UK Link	
			Online	Offline
Input Noms and Renoms	Shipper	NO/GNCC05/PRC/CM032/015 - C05/9004 - Part 10	Not Available	C05/9011 C05/9011
Output Noms and Renoms	Shipper	NO/GNCC05/PRC/CM032/015 - C05/9004 - Part 10	Not Available	C05/9011 C05/9009
Trade Noms (NBP)	Shipper	NO/GNCC05/PRC/CM032/014 - C05/9002 - Part 3	Not Available	C05/9011 C05/9009
Physical and Locational Flow Noms and Renoms	Shipper	NO/GNCC05/PRC/CM032/015 - C05/9019 - Part 1	Not Available	C05/9017 C05/9016
Physical and Locational Flow Noms and Renoms	Market Operator	NO/GNCC05/PRC/CM032/015 - C06/9025 - Part 3	N/A	N/A
Gas Trades (OCM Title)	Market Operator	NO/GNCC05/PRC/CM032/014 - C06/9045 - Part 2	N/A	N/A
Access NDM Position	Shipper	N/A	N/A	N/A
Access Imbalance Position	Shipper	N/A	N/A	N/A
Change DM Output Nom Deadline	N/A	N/A	N/A	N/A

Scenario 3

National Grid has access to Gemini, however, Shippers and Market Operator's do not. Full resources are available, and therefore although a full suite of functions may not necessarily be able to be carried out, an enhanced set of functions can be.

Party	Access During Incident
National Grid	✓
Shippers	✗
Market Operators	✗

Energy Procedures - After the Day

Activity	On Behalf Of	National Grid	UK Link
Input Noms and Renoms	Shipper	NO/GNCC05/PRC/CM032/015 - C05/9004 - Part 10	C05/9011 C05/9009
Output Noms and Renoms	Shipper	NO/GNCC05/PRC/CM032/015 - C05/9004 - Part 10	C05/9011 C05/9009
Trade Noms (NBP)	Shipper	NO/GNCC05/PRC/CM032/014 - C05/9002 - Part 3	C05/9011 C05/9009
Physical and Locational Flow Noms and Renoms	Shipper	NO/GNCC05/PRC/CM032/015 - C05/9019 - Part 1	C05/9017 C05/9016
Physical and Locational Flow Noms and Renoms	Market Operator	NO/GNCC05/PRC/CM032/015 - C06/9025 - Part 3	N/A
Gas Trades (OCM Title)	Market Operator	NO/GNCC05/PRC/CM032/014 - C06/9045 - Part 2	N/A
Access NDM Position	Shipper	Procedure Required	N/A
Access Imbalance Position	Shipper	Procedure Required	N/A
Change DM Output Nom Deadline	N/A	N/A	N/A