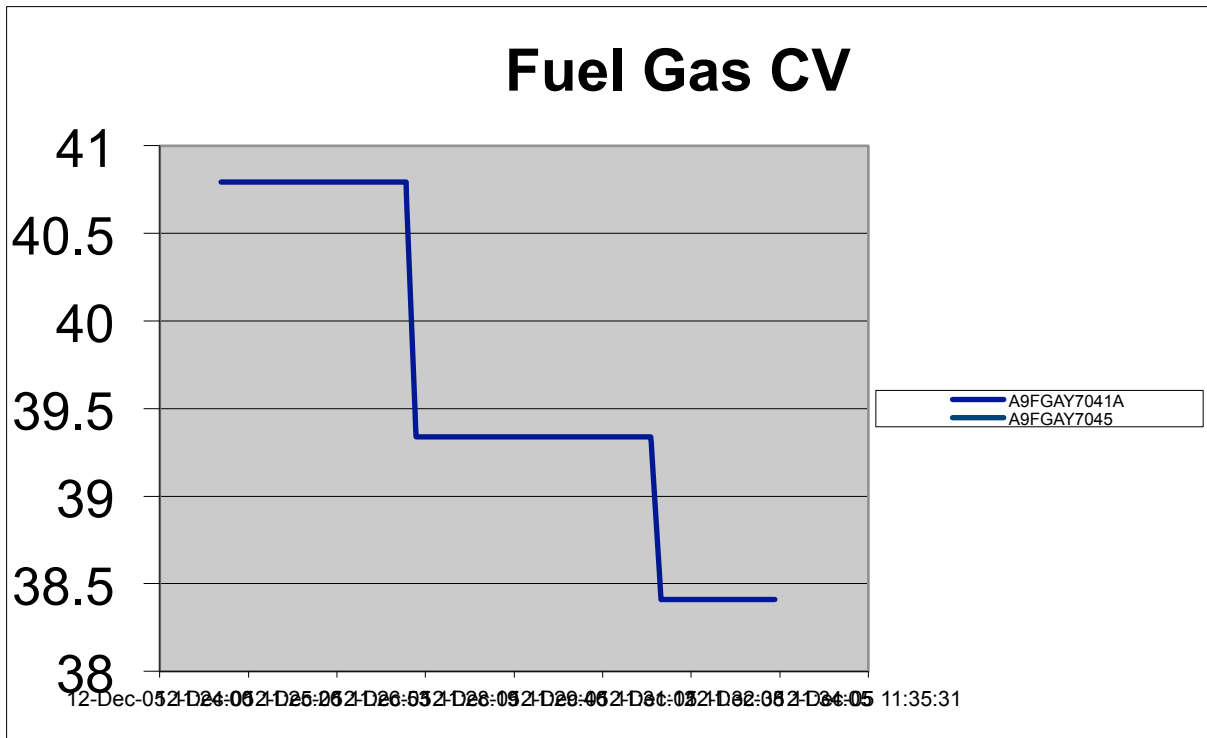
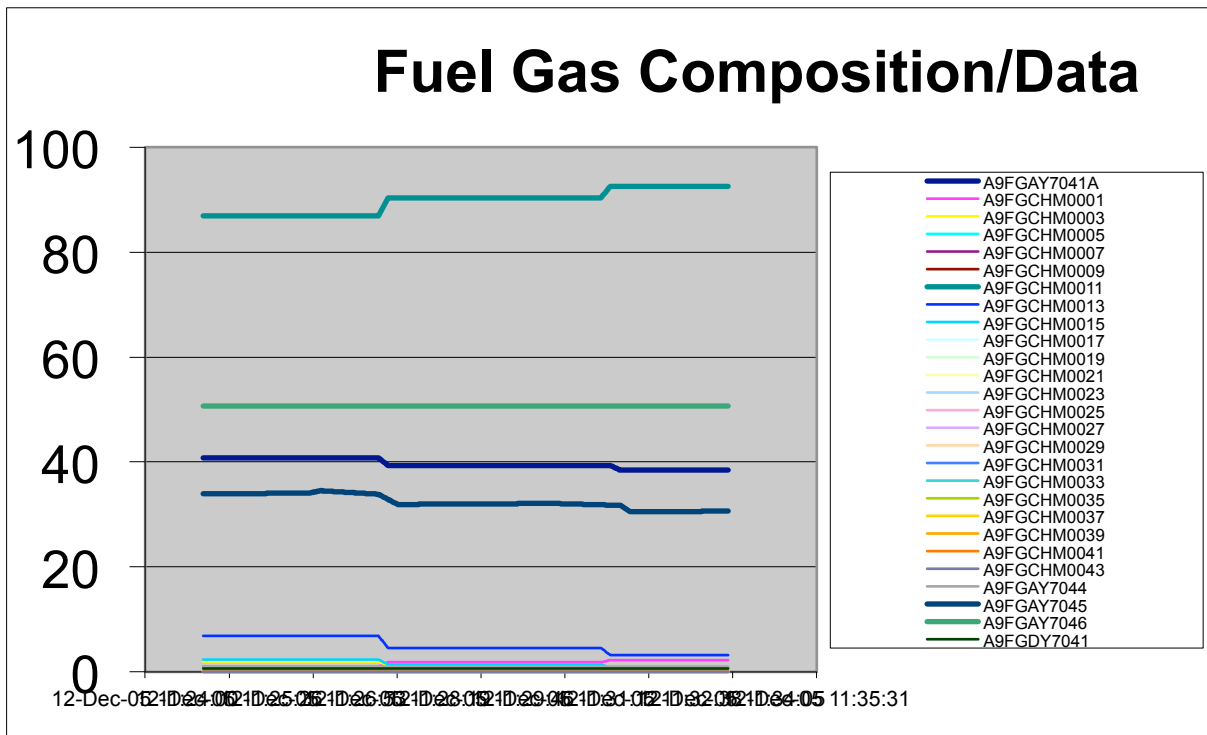


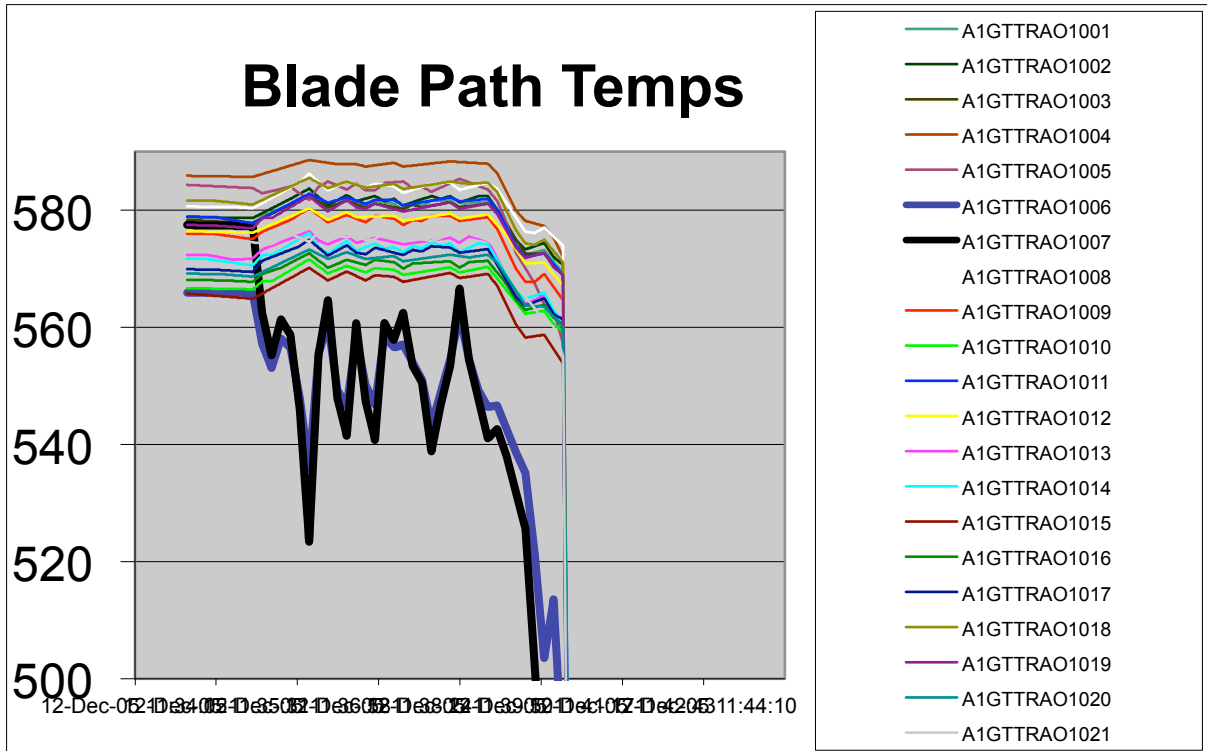
Gas Composition changes at CCGT in east of England



CV change from 40.8 to 38.4 in 4 minutes . Wobbe from 50.6 to 47.7 MJ/m³



Methane increases from 86.8 to 92.6 this causes CV drop. Methane burns at lower temperature



This led to loss of flame on combustors and unit trip

Also impact on gas quality after the fire at Rough, less variation after fire when Rough not operating

