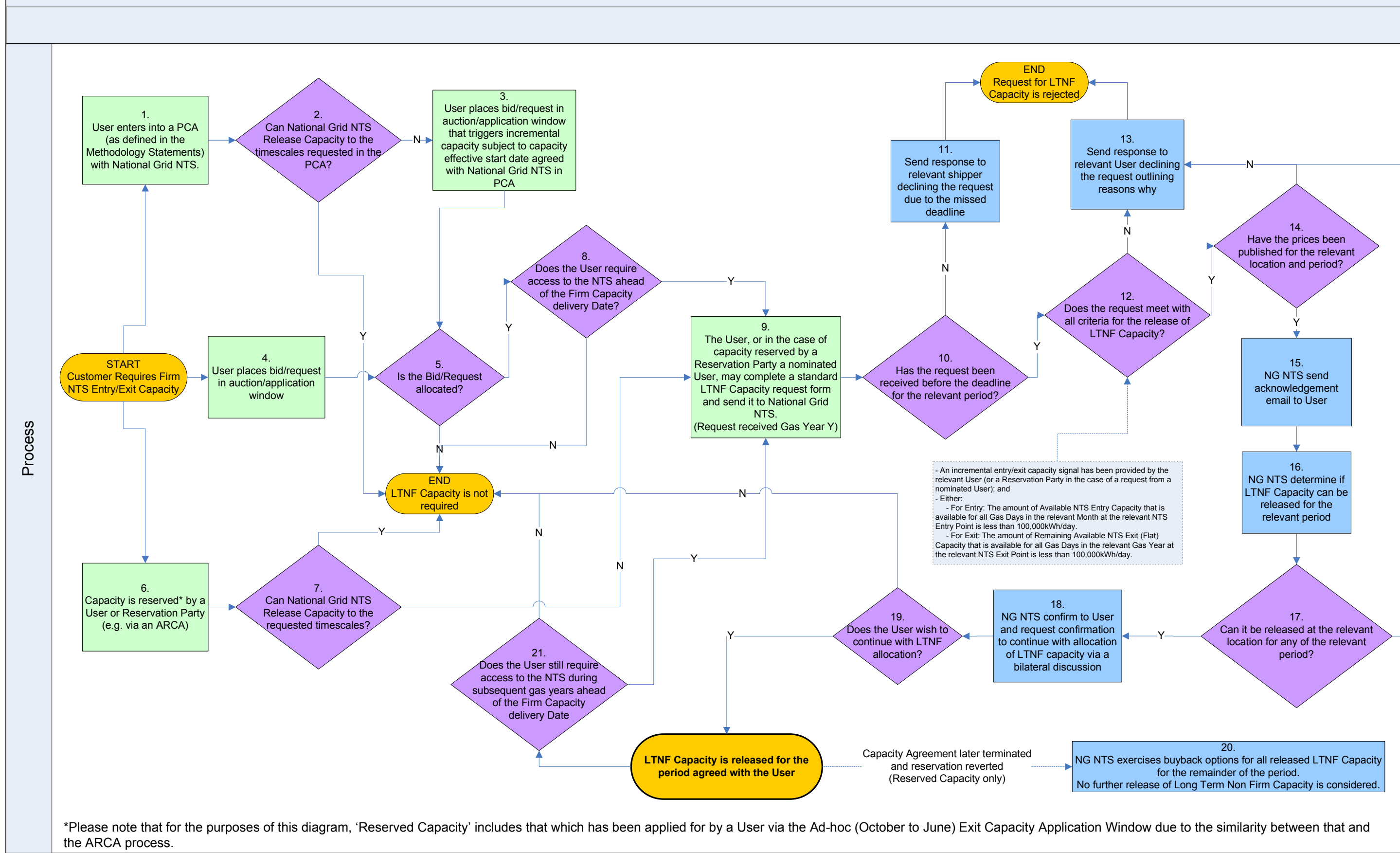
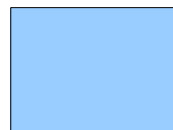


Long Term Non Firm Capacity Request Process

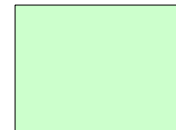


*Please note that for the purposes of this diagram, 'Reserved Capacity' includes that which has been applied for by a User via the Ad-hoc (October to June) Exit Capacity Application Window due to the similarity between that and the ARCA process.

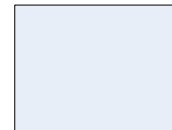
Key



= National Grid NTS Action

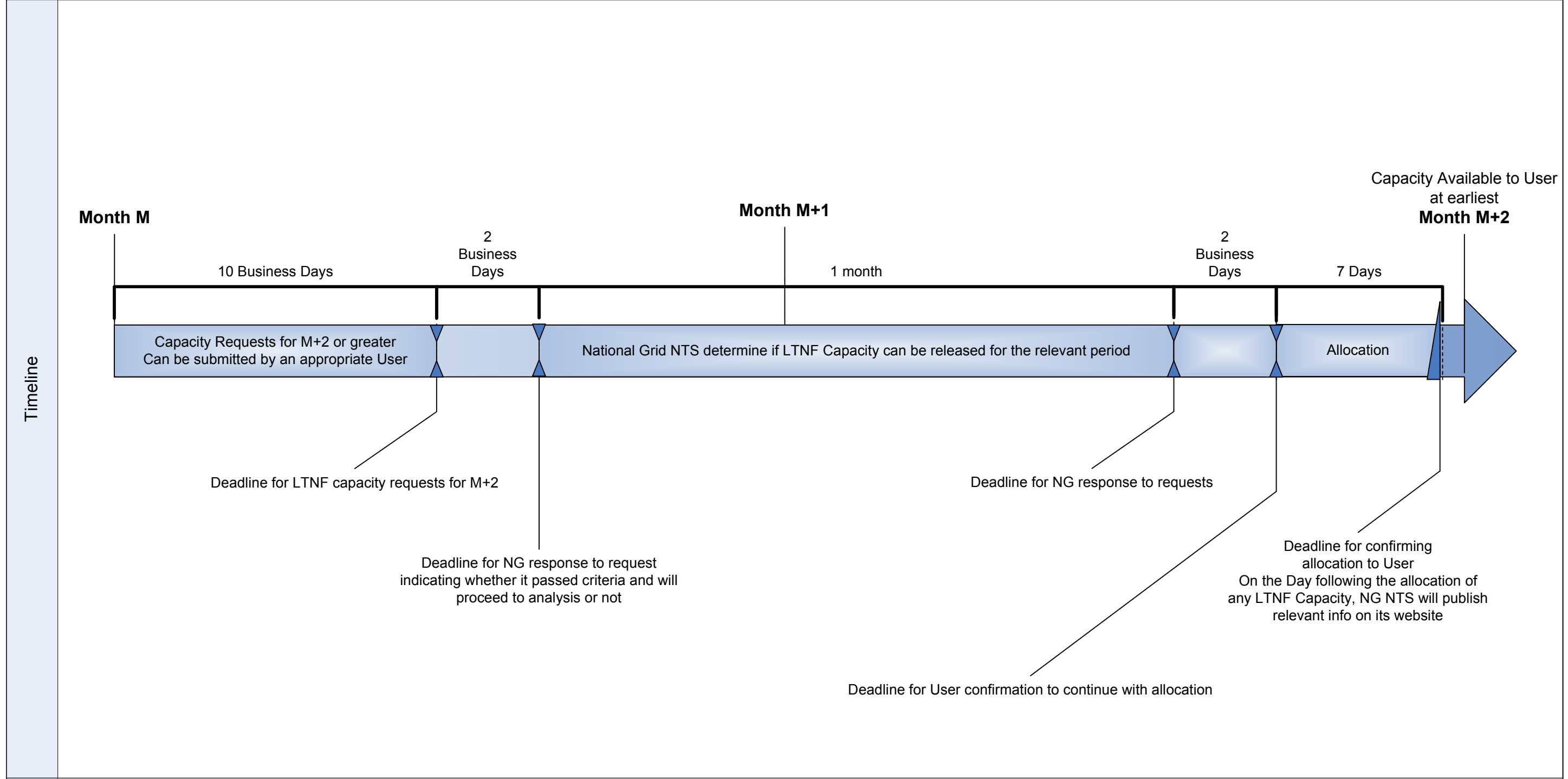


= User/Reservation Party Action



= Criteria for that stage

Long Term Non Firm Capacity Request Process



Notes

- 1) This timeline demonstrates the process for requesting LTNF Capacity from Month M+2 at the earliest (where M is the month in which the request is received)
- 2) Requests for capacity periods with an effective start date later than M+2 (but not later than the earlier of the final month of Gas Year Y+1 and the month preceding the Firm Capacity effective start date) will be considered at any time.
- 3) Requests for M+2 capacity can only be considered if received within the first 10 Business days of a month (M) to allow time for analysis and allocation (if appropriate) to be completed prior to the requested capacity period.