

Review Group 176

15 January 2008

Possible Alternative to use of SND
in Demand Estimation

Modelled approach - WCF

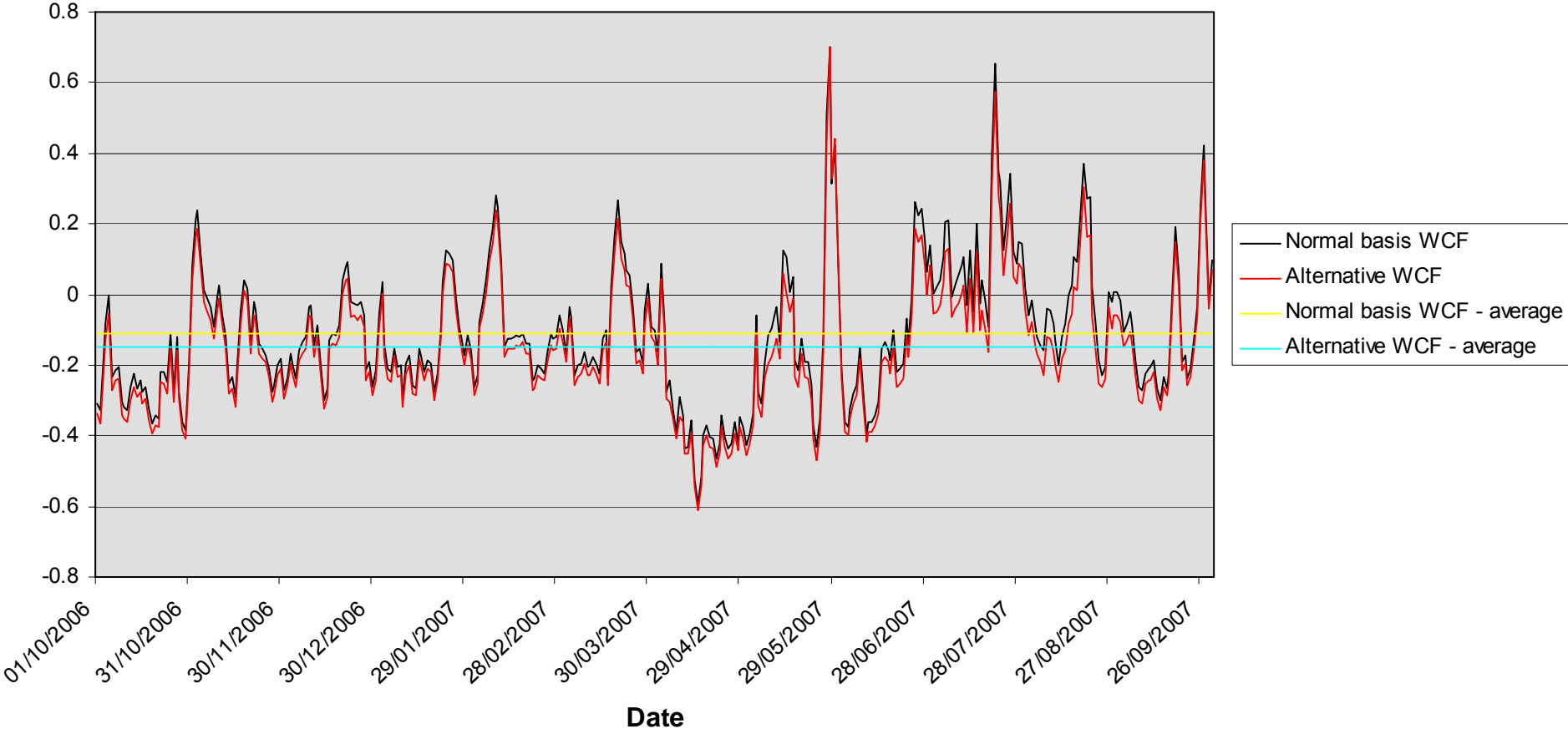
- Use WCF =
$$\frac{(\text{Actual LDZ NDM Demand} - \sum(AQ_{EUC}/365 \times ALP_t)_{LDZ})}{\sum(AQ_{EUC}/365 \times ALP_t)_{LDZ}}$$
- i.e. Derive an approximation of Seasonal Normal Demand for the LDZ by applying the ALP for the day to total AQ/365 for each EUC
- No change made to daily DAF for this simulation
- Revised daily WCF and SF calculated using alternative view of a “normal demand”

Alternative approach to WCF – Findings

- Minor differences in WCF – average WCF is slightly more negative under alternative method
- SF appears to improve – average SF closer to 1 under alternative method
- Above analysis covers WM LDZ only

Comparison of WCF under normal and alternative calculations

WM LDZ Gas Year 2006/07



Comparison of SF under normal and alternative calculations

WM LDZ Gas Year 2006/07

