



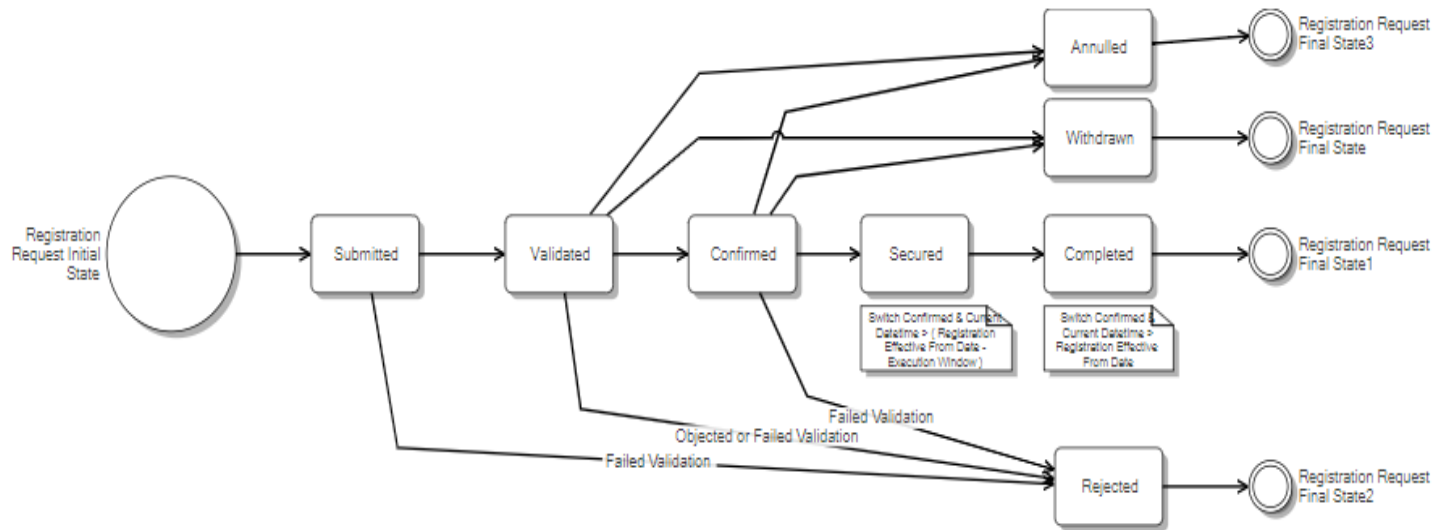
630R - Update

Background

- Following Central Switching Service implementation registration will be 'mastered' via CSS for in-scope Supply Meter Points
- Registration Requests can be:
 - Switch Request – Change of Supplier / Change of Shipper
 - Switch Request – Change of Supplier only
 - Registration Request – Change of Shipper
 - Initial Registration Request – First association of Supplier and Shipper
 - Transporter Initiated Registration – CDSP / Transporter initiated first association of Supplier and Shipper
 - Deregistration Request – End association of Supplier and Shipper
- Different processes follow different timelines
 - E.g. Change of Shipper deadline by 17:00 on CD-1

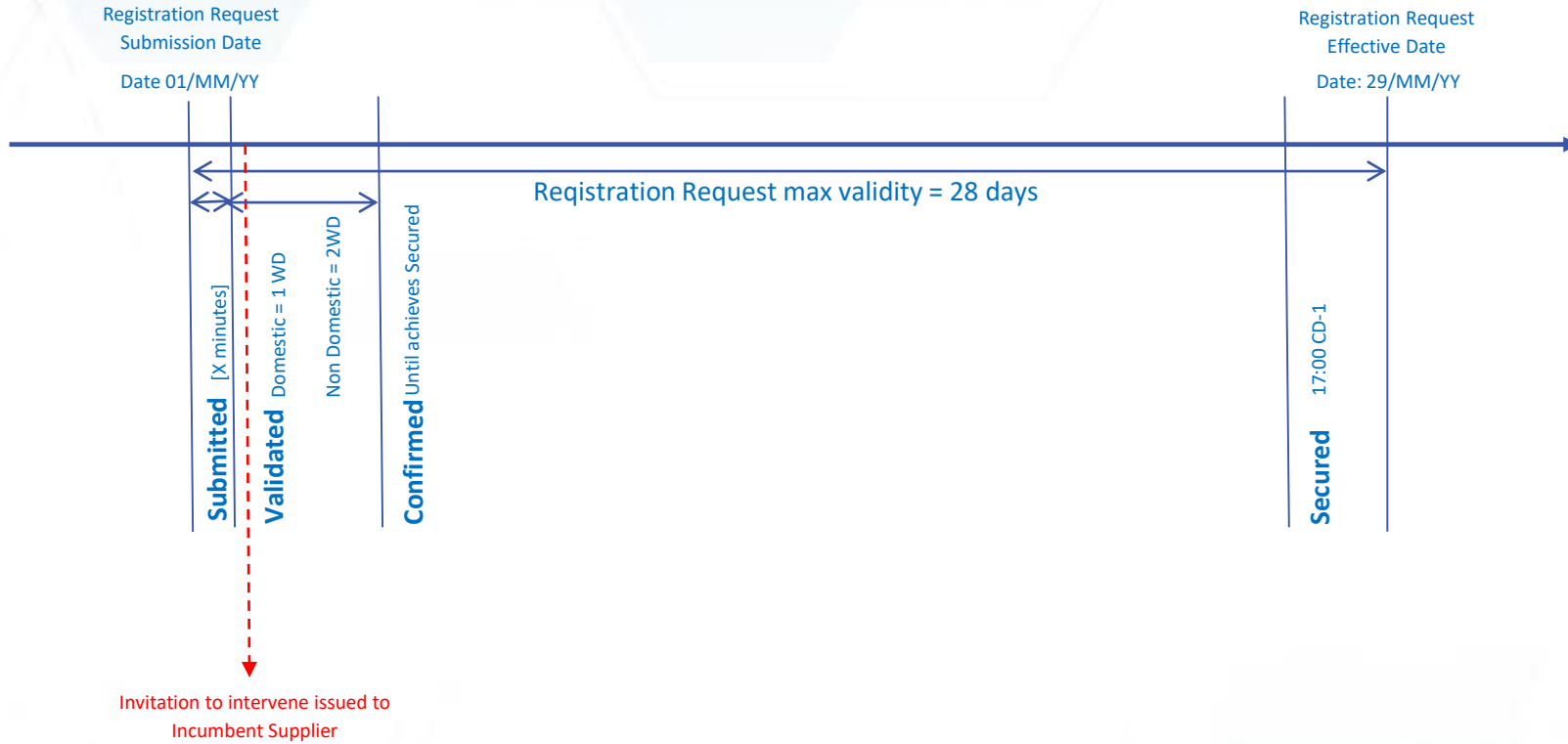
Background

- Registration Requests progress through defined stages:



- Objection process conducted on CSS –
 - Registration Request Status Confirmed - @ end of Objection period
- Secured - @ [17:00 hrs] on D-1 (calendar days)
 - Secured is equivalent of 'CO' at D-2 (working days) – i.e. unconditional transfer

Switch Request – Standard Process



Not to scale

CD = Days / WD = Working Days

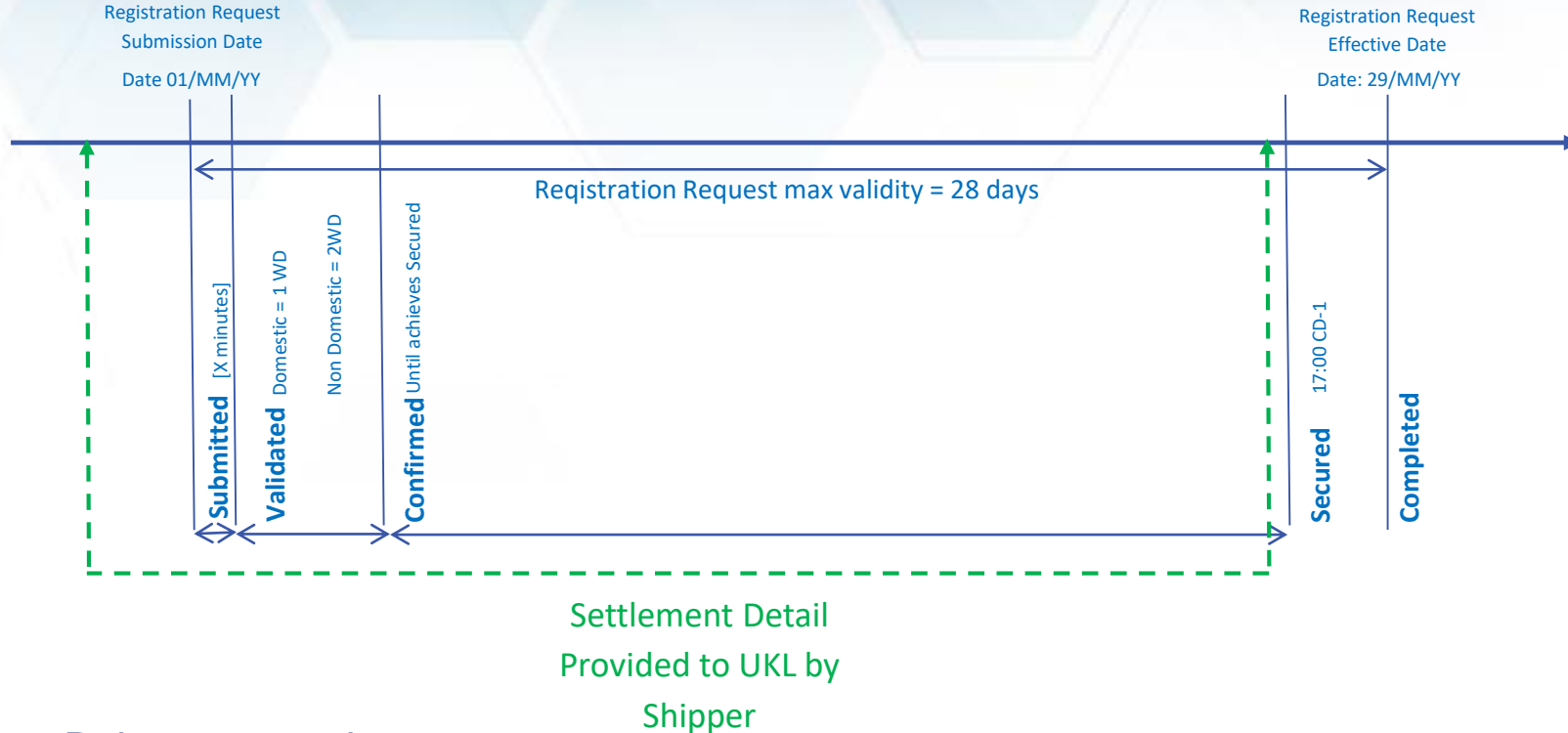
[Settlement Detail Notification]

- 'Settlement Detail' is effectively any detail not provided in the Switch Request that is currently provided in Nomination / Confirmation processes
 - 'Basic' items shown for illustration, further items tbc
 - Depending upon the SMPs in scope this may be extended

| Data Item | Comments |
|------------------------------|---|
| Class | If Class 1 and AQ above 58,600,000 kWh then this would remain as Class 1 else it would be defaulted to Class 4 regardless of AQ |
| SOQ | For Class 1 & 2 sites the current value would be carried forward, N/A for Class 3 & 4 |
| SHQ | For Class 1 & 2 sites the current value would be carried forward, N/A for Class 3 & 4 |
| Meter Read Frequency | Would be defaulted based on the prevailing AQ value (as per UNC Section M) |
| Meter Read Batch Frequency | Not required as would be defaulted to Class 1 or 4 |
| Shipper Short Code | As provided on the CSS synchronisation message received into UK Link |
| Supplier Short Code | As provided on the CSS synchronisation message received into UK Link |
| Registration Effective Date | As provided on the CSS synchronisation message received into UK Link |
| Supplier Generated Reference | As provided on the CSS synchronisation message received into UK Link, else blank |
| Customer / Contact Details | Old details will be end dated and will not carry forward |

- Settlement Detail Notification will largely provide means of provision of above
 - Some information may be necessary prior to Settlement Detail Notification
- Key challenge is creating association with the CSS Registration Requests

Switch Request + [Settlement Detail Notfⁿ]



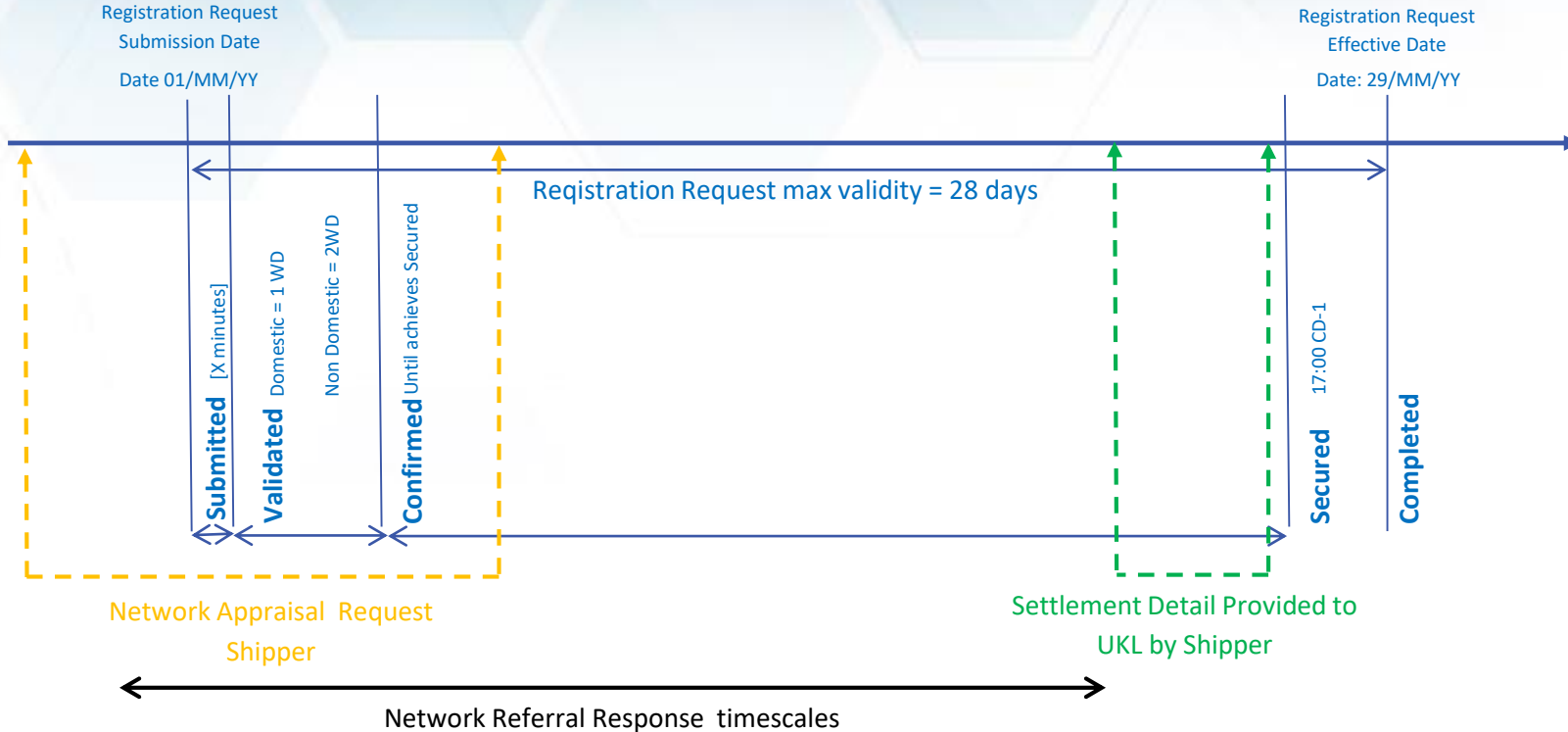
Rules proposed:

- SDN provided by incoming Shipper can be PRIOR to Registration Request via CSS
- SDN association must happen by a given deadline - working assumption [15:00 hrs] on CD-1
- Association will consider :[Effective Date*] / [Registration Request Reference*] / Supply Meter Point / Supplier / Shipper
- Subsequent valid SDN for SMP / Supplier / Shipper will lapse previous SDN
- SDN valid for [28] [calendar] days

[Network Appraisal Request]

- Existing Nomination Process fulfils three functions
 - Setting 'Settlement Details' for Large Supply Points
 - Transportation Offer
 - Enabling Network Assessment / Referral
- Settlement Detail Notification and response / data available will fulfil first two functions
- Network Assessment / Referral – still necessary for certain Supply Meter Points
 - [DM Supply Meter Points]
 - [Seasonal capacity requests]
 - [Supply Meter Points requesting the Optional Commodity Tariff (Shorthaul)]
 - [Network Exit Agreements (NExAs)]
 - [Others?]

Switch Request+[Network Appraisal Request]+[Settlement Detail Notfn]



Rules proposed:

- NAR provided by incoming Shipper probably PRIOR to Registration Request via CSS to take account of Referral Response timings, but might be submitted after
- Multiple NARs may be submitted by incoming Shipper (as now)
- NAR response reference MUST be quoted in SDN
- IF NAR response reference is not quoted – defaults will apply

Other SPA Impacts

- Objection process no longer in UNC for in scope SMPs
- Withdrawal no longer in UNC for in scope SMPs
 - NB: Withdrawal in CSS = Confirmation Cancellation equivalent
- Confirmation Cancellation no longer needed for in scope SMPs
- Contact details can no longer mandated to be associated with Confirmation (i.e. from D)
- Change of Tenancy indicator – contained in CSS flows but not passed to UKL
 - Remove from Data Model for in scope processes

Supply Point Amendment

- UNC Section G defines data items that can be amended outside a Confirmation
- This needs to change due to data being mastered via CSS:
 - ~~Change in supplier where there is no change of Registered User~~
 - ~~Change in Market Sector Code~~
- Others currently expected to be unchanged:
 - Change in Supply Point Capacity
 - Change in Supply Point Offtake Rate
 - Change in Meter Read Frequency
 - Change of Meter Reader
 - Change in User Emergency Contacts
 - Change in any details maintained pursuant to Standards Special Condition A50(8)
 - Change of Class User
 - Meter Asset Manager ID
 - Gas Act Owner
 - Any other detail specified in the UK Link Manual as capable of being modified by Supply Point Amendment
 - Change in [Meter Point Location Address**] Meter Post Code
 - Change in NTS Optional Commodity Rate

** CSS introduces the Retail Energy Location Address – this will be mastered via CSS, MPL remains Transporter responsibility

Next Areas for Consideration

- Settlement Details
 - Clarification of 'In Scope' SMPs from Ofgem
 - Define Settlement Details
- Change of Supplier only
 - Treat as a Supply Point Amendment?
 - Treat as a Same Shipper Reconfirmation?
- Output flows
 - Format? Re-use / Change?
 - Means? API / File formats?
 - Content? Data availability?